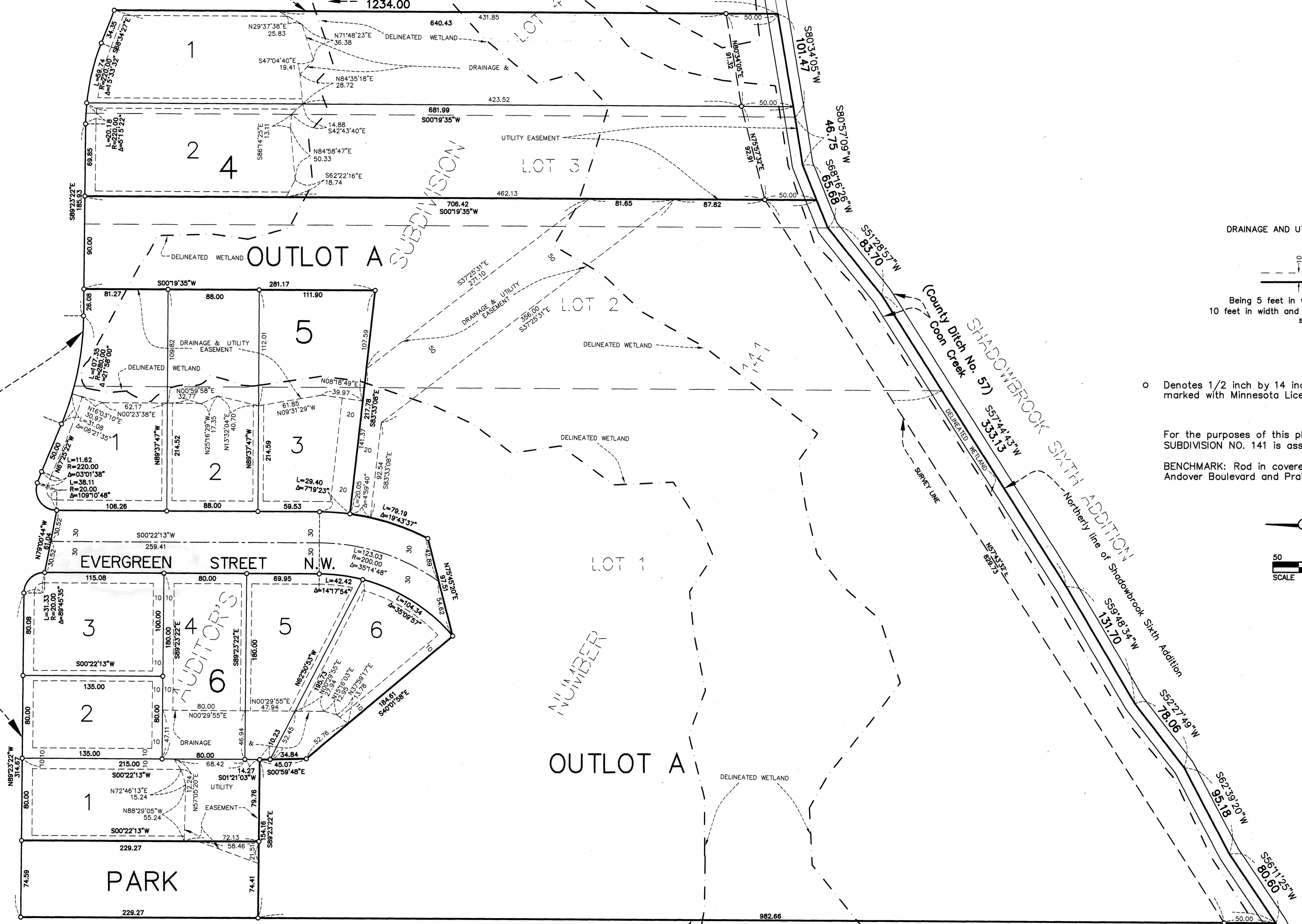
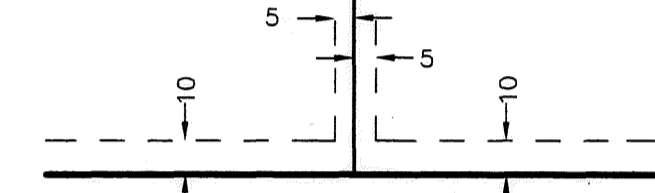


HICKORY MEADOWS

East line of the West 100.00 feet of Lot 4, AUDITOR'S SUBDIVISION NO. 141



DRAINAGE AND UTILITY EASEMENTS ARE SHOWN THUS:

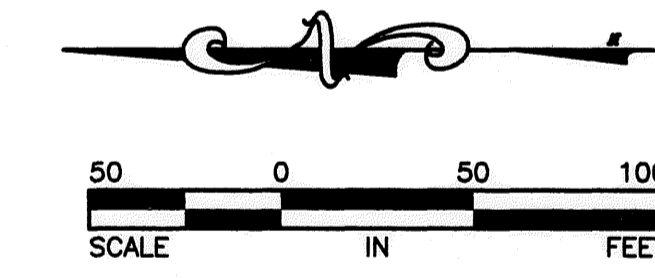


Being 5 feet in width and adjoining lot lines, and 10 feet in width and adjoining street lines unless otherwise shown on the plat.

o Denotes 1/2 inch by 14 inch iron monument set and marked with Minnesota License No. 18420.

For the purposes of this plat the north line Lot 1, AUDITOR'S SUBDIVISION NO. 141 is assumed to bear $S89^{\circ}23'22''E$.

BENCHMARK: Rod in covered tube in the Northeast Quadrant of Andover Boulevard and Prairie Road. Elevation = 902.98



MATCH LINE
SEE PAGE 1 OF 2

1756.94
 $S00^{\circ}19'35''W$

West line of the East 515.00 feet of Lot 1, AUDITOR'S SUBDIVISION NO. 141