

# HIDDEN CREEK THIRD ADDITION

CITY OF ANDOVER, COUNTY OF ANOKA

KNOW ALL MEN BY THESE PRESENTS: That Good Value Homes, Inc., a Minnesota corporation, owner and proprietor of the following described property situated in the County of Anoka, State of Minnesota, to wit:

Those parts of the following described properties:

Lots 1 and 12, AUDITORS SUBDIVISION NO. 137, according to the recorded plat thereof;

The Northeast Quarter of the Southeast Quarter, and the Southeast Quarter of the Southeast Quarter, all in Section 33, Township 32, Range 24;

Which lie southerly of HIDDEN CREEK SECOND ADDITION, according to the recorded plat thereof.

Has caused the same to be surveyed and platted as HIDDEN CREEK THIRD ADDITION and does hereby donate and dedicate to the public for the public use forever the Lane, Street, Park, Drive, and Avenue, and the drainage and utility easements as shown on the plat. In witness whereof, said Good Value Homes, Inc. has caused these presents to be signed by its proper officers this 12<sup>th</sup> day of AUGUST, 1986.

Good Value Homes, Inc.:

Betty R. Hardle  
Betty R. Hardle, Chief Executive Officer

Donald L. Hardle  
Donald L. Hardle, President

State of Minnesota  
County of ANOKA

The foregoing instrument was acknowledged before me this 12<sup>th</sup> day of August, 1986 by Betty R. Hardle, Chief Executive Officer, and Donald L. Hardle, President, of Good Value Homes, Inc., a Minnesota corporation, on behalf of the corporation.

La Donna C. Newstrom  
Notary Public, ANOKA County, Minnesota  
My commission expires JANUARY 01, 1992

I hereby certify that I have surveyed and platted the property described on this plat as HIDDEN CREEK THIRD ADDITION; that this plat is a correct representation of said survey; that all distances are correctly shown in feet and hundredths of a foot; that all monuments have been correctly placed in the ground as shown; and that the outside boundary lines are correctly designated on said plat, and that there are no wetlands or public highways to be designated other than as shown.

Richard H. Cherrier  
Richard H. Cherrier, Land Surveyor  
Minnesota Registration Number 9064

State of Minnesota  
County of ANOKA

The foregoing Surveyor's Certificate was acknowledged before me this 12<sup>th</sup> day of August, 1986 by Richard H. Cherrier, Land Surveyor.

La Donna C. Newstrom  
Notary Public, ANOKA County, Minnesota  
My commission expires JANUARY 01, 1992

ANDOVER, MINNESOTA

This plat was approved and accepted by the City Council of the City of Andover, Minnesota at a regular meeting thereof held this 15<sup>th</sup> day of JULY, 1986.

CITY COUNCIL OF THE CITY OF ANDOVER, MINNESOTA

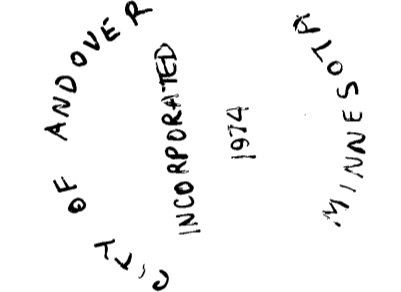
James W. ... Mayor      James E. Schrony Clerk

If applicable, the written comments and recommendations of the Commissioner of Transportation and the County Highway Engineer have been received by the city or township or the prescribed 30 day period has elapsed without receipt of such comments and recommendations, as provided by Minn. Statutes, Section 505.03, Subd. 2.

ANOKA COUNTY SURVEYOR

This plat was checked and approved on this 25<sup>th</sup> day of August, 1986.

Richard W. Anderson  
County Surveyor, Anoka County, Minnesota



"SUFFICIENT TAXES AND TRANSFER ENTERED"

August 25 1986  
Charles R. ...  
Auditor, Anoka County  
By S. Culver  
Deputy

I HEREBY CERTIFY THAT THE TAXES PAYABLE IN THE YEAR 86 ON THE LANDS DESCRIBED WITHIN ARE PAID

Dennis C. ...  
Anoka County Treasurer  
D. Henry

722767

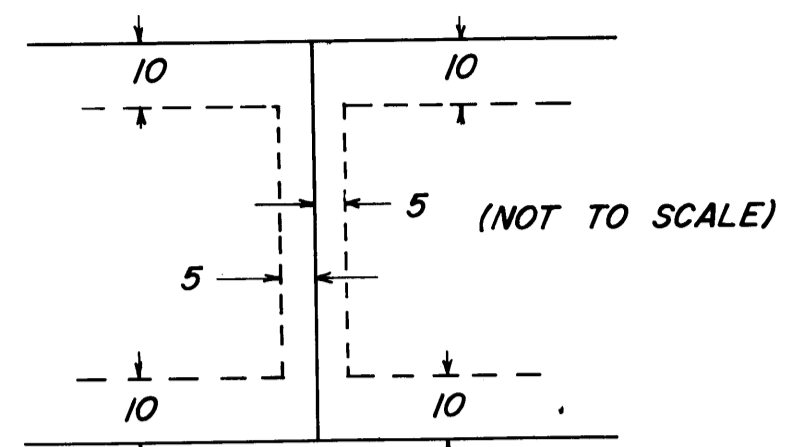
OFFICE OF COUNTY RECORDER  
STATE OF MINNESOTA, COUNTY OF ANOKA  
A plat of the ...  
10:25 ...  
Paul J. Omsdahl  
County Recorder  
By Steta Kay ...  
Deputy

**CHERRIER-WINTER & ASSOCIATES INC.**  
REGISTERED PROFESSIONAL LAND SURVEYORS

# HIDDEN CREEK THIRD ADDITION

CITY OF ANDOVER COUNTY OF ANOKA

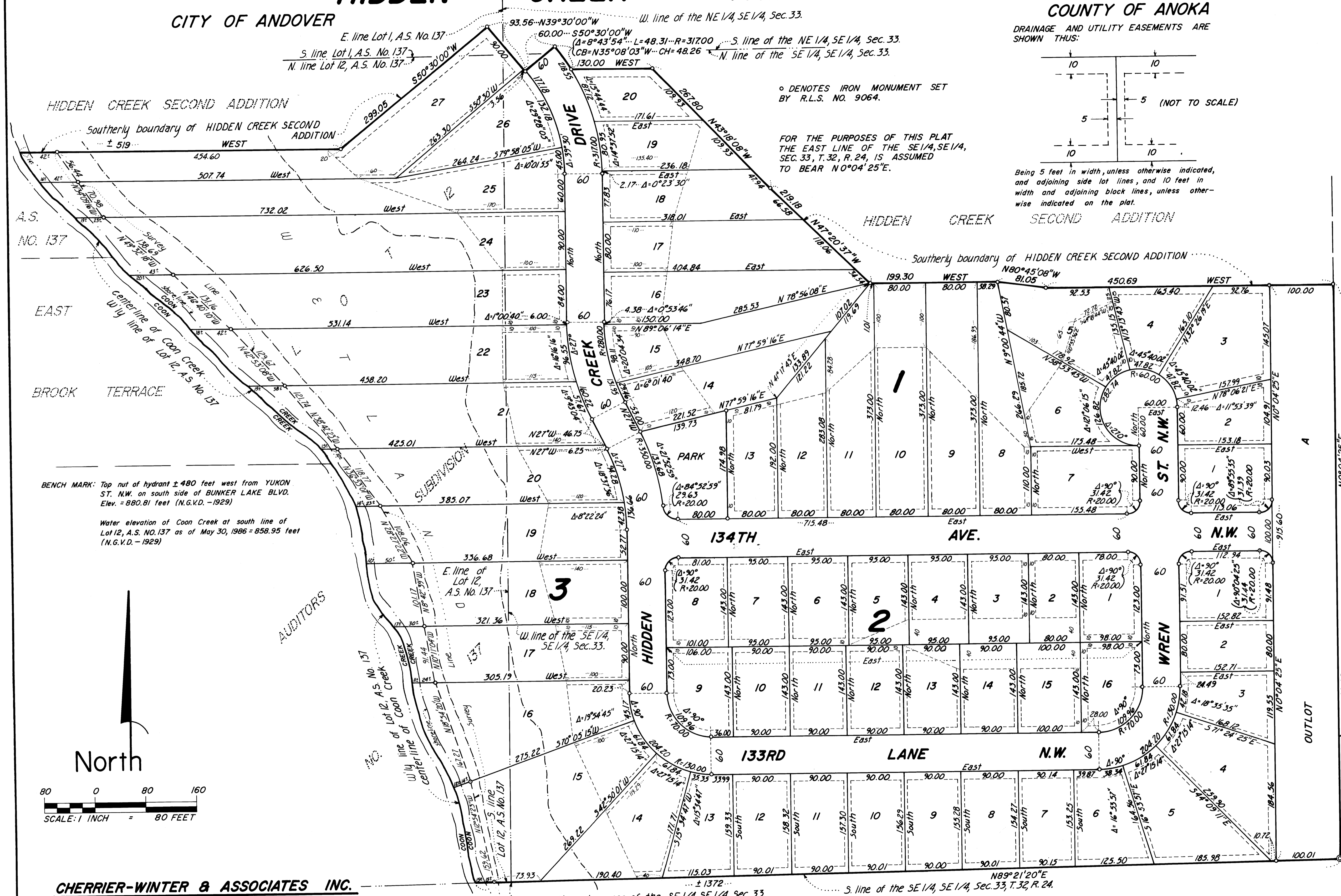
DRAINAGE AND UTILITY EASEMENTS ARE SHOWN THUS:



Being 5 feet in width, unless otherwise indicated, and adjoining side lot lines, and 10 feet in width and adjoining block lines, unless otherwise indicated on the plat.

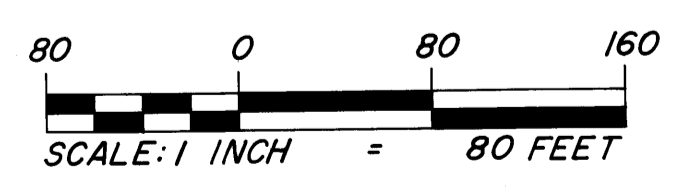
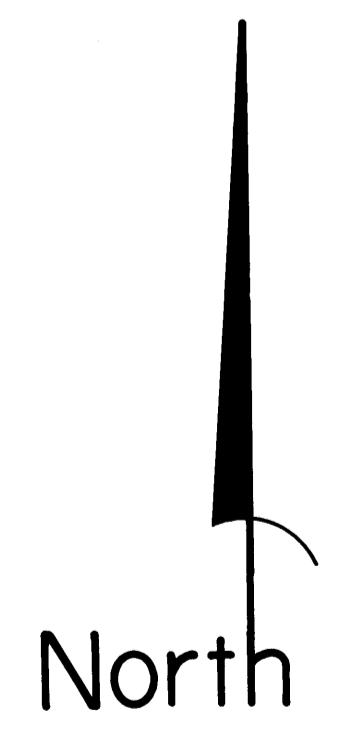
o DENOTES IRON MONUMENT SET BY R.L.S. NO. 9064.

FOR THE PURPOSES OF THIS PLAT THE EAST LINE OF THE SE 1/4, SE 1/4, SEC. 33, T. 32, R. 24, IS ASSUMED TO BEAR N 0° 04' 25" E.



BENCH MARK: Top nut of hydrant ± 480 feet west from YUKON ST. N.W. on south side of BUNKER LAKE BLVD. Elev. = 880.81 feet (N.G.V.D. - 1929)

Water elevation of Coon Creek at south line of Lot 12, A.S. NO. 137 as of May 30, 1986 = 858.95 feet (N.G.V.D. - 1929)



**CHERRIER-WINTER & ASSOCIATES INC.**  
REGISTERED PROFESSIONAL LAND SURVEYORS