

HIDDEN FOREST EAST SECOND ADDITION

CITY OF HAM LAKE
COUNTY OF ANOKA
SEC. 25, T32N, R23W

KNOW ALL PERSONS BY THESE PRESENTS: That HFN Properties, LLC, a Minnesota limited liability company, owner of the following described property:

Tract A, REGISTERED LAND SURVEY NO. 281, Anoka County, Minnesota.

Has caused the same to be surveyed and platted as HIDDEN FOREST EAST SECOND ADDITION and does hereby dedicate to the public for public use the public ways and the drainage and utility easements as shown on this plat.

In witness whereof said HFN Properties, LLC, a Minnesota limited liability company, has caused these presents to be signed by its proper officer this 20th day of May, 2020.

HFN PROPERTIES, LLC

Jeffrey A. Stalberger
Jeffrey A. Stalberger, Administrator

STATE OF Minnesota
COUNTY OF Anoka

This instrument was acknowledged before me this 20th day of May, 2020 by Jeffrey A. Stalberger, Administrator of HFN Properties, LLC, a Minnesota limited liability company.

Dennis Webster (Signature)

Dennis Webster (Print Name)

Notary Public, Anoka County, Minnesota
My Commission Expires 1/31/2022

I Jason E. Rud do hereby certify that this plat was prepared by me or under my direct supervision; that I am a duly Licensed Land Surveyor in the State of Minnesota; that this plat is a correct representation of the boundary survey; that all mathematical data and labels are correctly designated on this plat; that all monuments depicted on this plat have been, or will be correctly set within one year; that all water boundaries and wet lands, as defined in Minnesota Statutes, Section 505.01, Subd. 3, as of the date of this certificate are shown and labeled on this plat; and all public ways are shown and labeled on this plat.

Dated this 6th day of MAY, 2020

Jason E. Rud
Jason E. Rud, Licensed Land Surveyor
Minnesota License No. 41578

STATE OF MINNESOTA
COUNTY OF Anoka

This instrument was acknowledged before me this 6th day of May, 2020 by Jason E. Rud.

Lalae Mack (Signature)

Lalae Mack (Print Name)

Notary Public, Anoka County, Minnesota
My Commission Expires 01/31/2022

CITY COUNCIL, CITY OF HAM LAKE, MINNESOTA

This plat of HIDDEN FOREST EAST SECOND ADDITION was approved and accepted by the City Council of the City of Ham Lake, Minnesota at a regular meeting thereof held this 21st day of October, 2019, and said plat is in compliance with the provisions of Minnesota Statutes, Section 505.03, Subd. 2.

City Council, City of Ham Lake, Minnesota

By Mayor Mayor By Dennis Webster Clerk

COUNTY SURVEYOR

I hereby certify that in accordance with Minnesota Statutes, Section 505.021, Subd. 11, this plat has been reviewed and approved this 21st day of May, 2020.

Charles F. Gitzsen
Charles F. Gitzsen
Anoka County Surveyor

COUNTY AUDITOR/TREASURER

Pursuant to Minnesota Statutes, Section 505.021, Subd. 9, taxes payable in the year 2020 on the land hereinbefore described have been paid. Also, pursuant to Minnesota Statutes, Section 272.12, there are no delinquent taxes and transfer entered this 21st day of May, 2020.

Jonell M. Sawyer
Jonell M. Sawyer
Property Tax Administrator

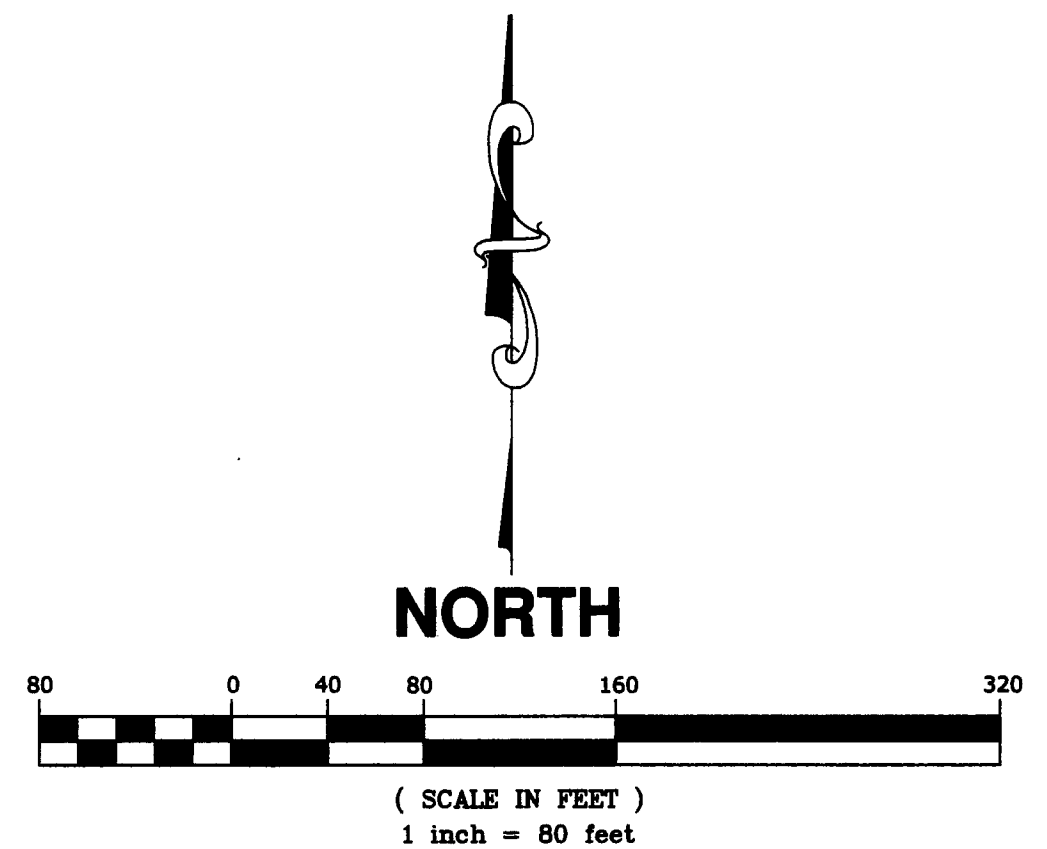
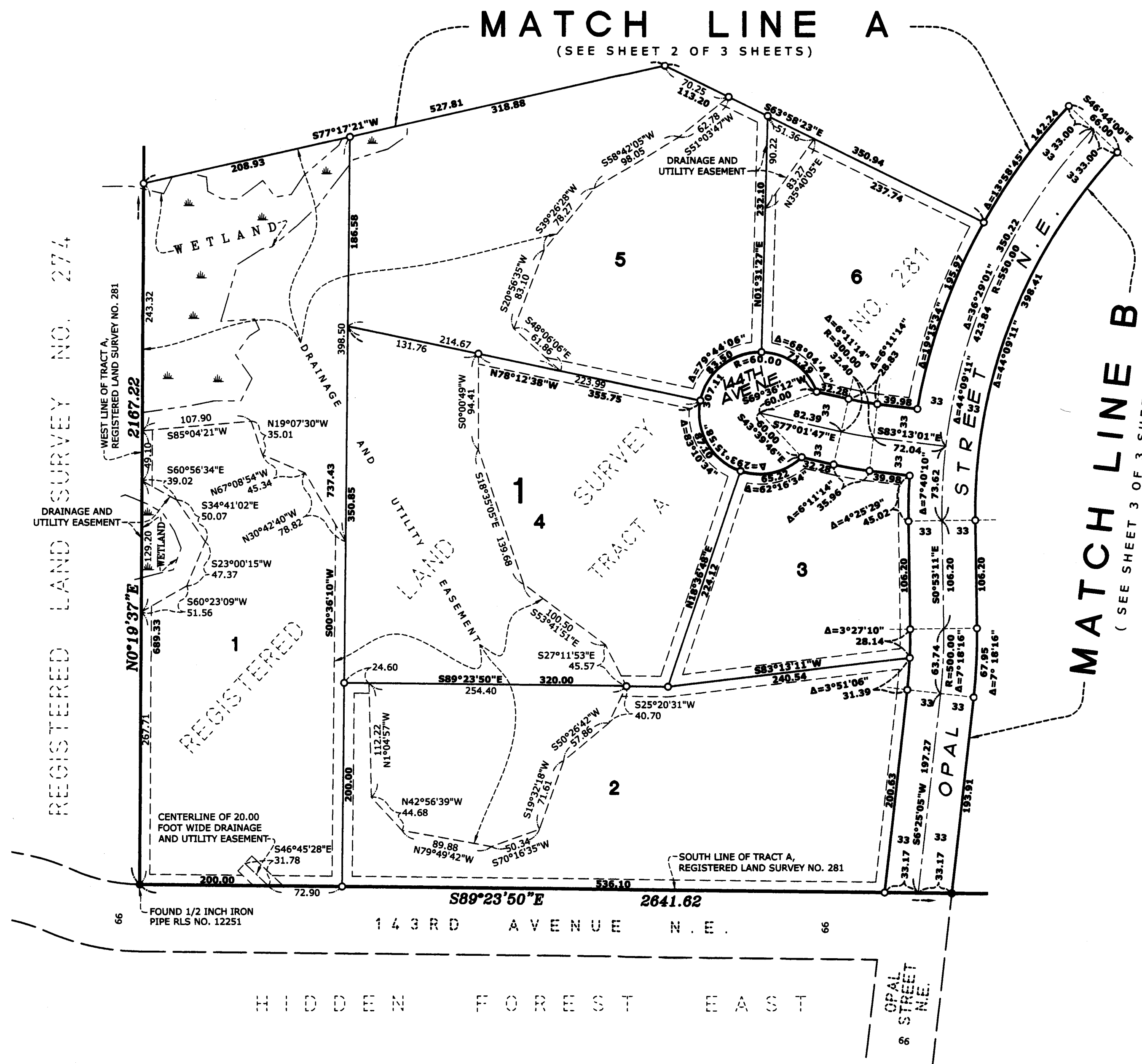
By Jeanne War Deputy

COUNTY RECORDER/REGISTRAR OF TITLES
COUNTY OF ANOKA, STATE OF MINNESOTA

I hereby certify that this plat of HIDDEN FOREST EAST SECOND ADDITION was filed in the office of the County Recorder/Registrar of Titles for public record on this 21st day of May, 2020 at 1:45 o'clock P.M. and was duly recorded as Document Number 574193.001.

Jonell M. Sawyer
County Recorder/Registrar of Titles

By Jeanne War Deputy



- LEGEND**
- DENOTES 1/2 INCH IRON MONUMENT FOUND, MARKED RLS NO. 41578, UNLESS OTHERWISE SHOWN
 - DENOTES 1/2 INCH BY 14 INCH IRON PIPE SET, MARKED RLS NO. 41578
 - ▭ DENOTES WETLAND EDGE AS DELINEATED BY KOOLHAUG ENVIRONMENTAL SERVICE COMPANY IN AUGUST 2018.

DRAINAGE AND UTILITY EASEMENTS ARE SHOWN THUS:



BEING 10 FEET IN WIDTH AND ADJOINING RIGHT OF WAY LINES, SIDE AND REAR LOT LINES, UNLESS OTHERWISE SHOWN ON THIS PLAT.

FOR THE PURPOSES OF THIS PLAT, THE SOUTH LINE OF TRACT A, REGISTERED LAND SURVEY NO. 281, IS ASSUMED TO HAVE A BEARING OF SOUTH 89 DEGREES 23 MINUTES 50 SECONDS EAST.

E.G. RUD & SONS, INC.
EST. 1877 Professional Land Surveyors

\$560

HIDDEN FOREST EAST SECOND ADDITION

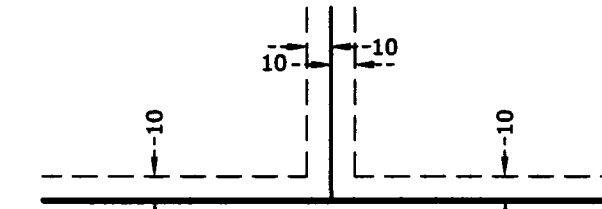
CITY OF HAM LAKE
COUNTY OF ANOKA
SEC. 25, T32N, R23W

REGISTERED

LEGEND

- DENOTES 1/2 INCH IRON MONUMENT FOUND, MARKED RLS NO. 41578, UNLESS OTHERWISE SHOWN
- DENOTES 1/2 INCH BY 14 INCH IRON PIPE SET, MARKED RLS NO. 41578
- ▭ DENOTES WETLAND EDGE AS DELINEATED BY KJOLHAUG ENVIRONMENTAL SERVICE COMPANY, IN AUGUST 2018.

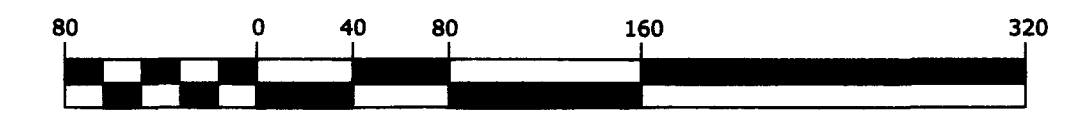
DRAINAGE AND UTILITY EASEMENTS ARE SHOWN THUS:



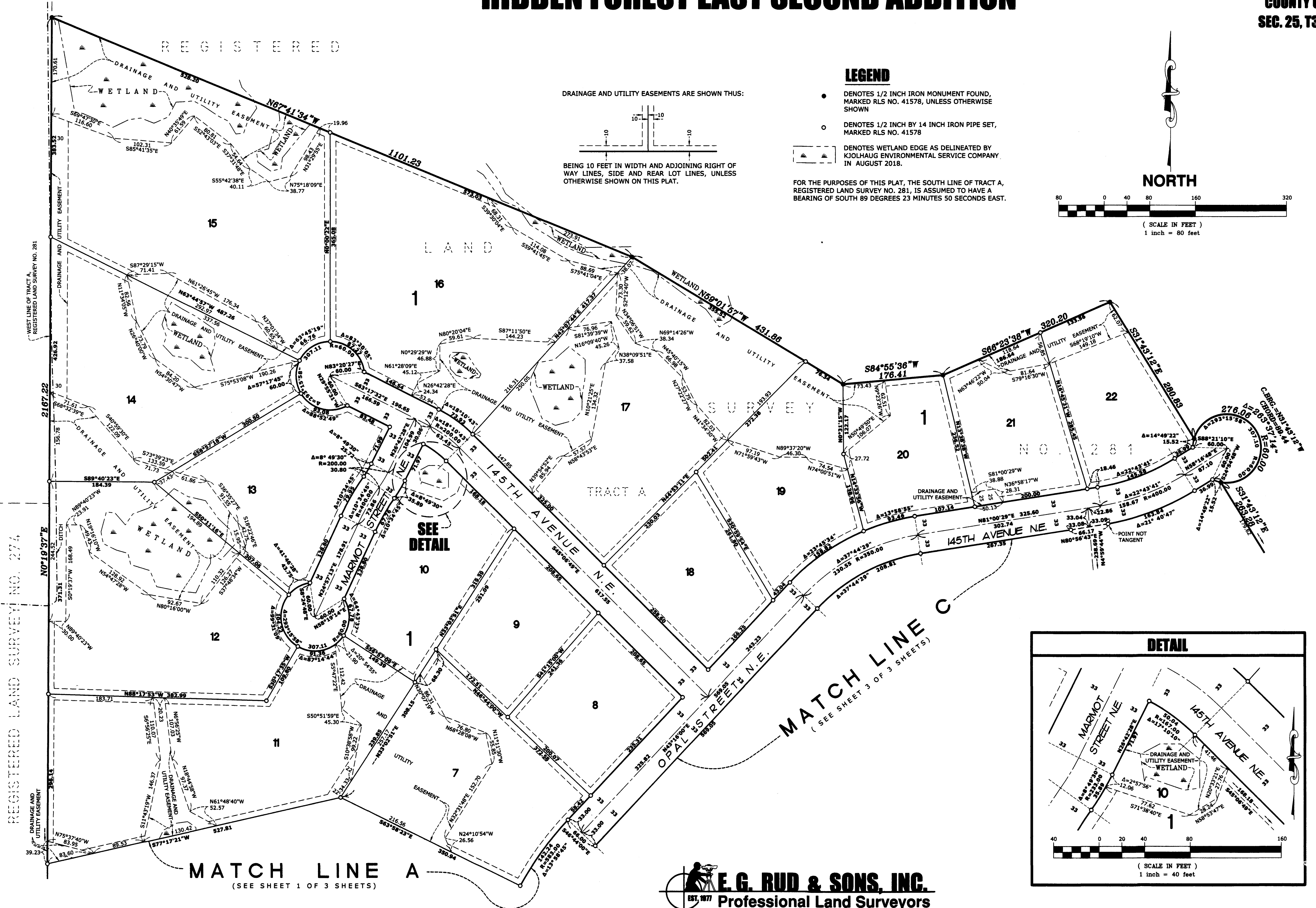
BEING 10 FEET IN WIDTH AND ADJOINING RIGHT OF WAY LINES, SIDE AND REAR LOT LINES, UNLESS OTHERWISE SHOWN ON THIS PLAT.

FOR THE PURPOSES OF THIS PLAT, THE SOUTH LINE OF TRACT A, REGISTERED LAND SURVEY NO. 281, IS ASSUMED TO HAVE A BEARING OF SOUTH 89 DEGREES 23 MINUTES 50 SECONDS EAST.

NORTH



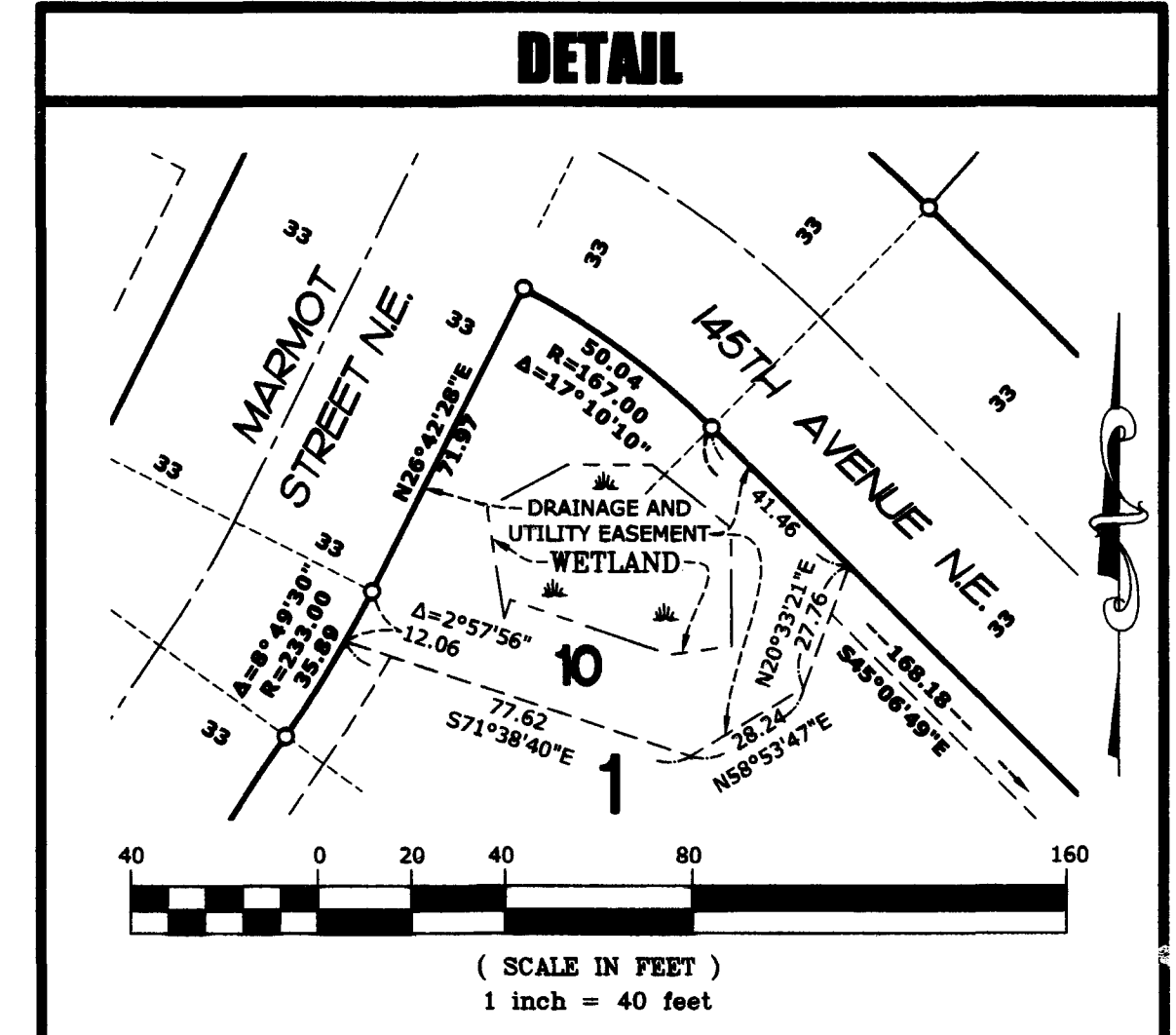
(SCALE IN FEET)
1 inch = 80 feet



SEE DETAIL

MATCH LINE C
(SEE SHEET 3 OF 3 SHEETS)

MATCH LINE A
(SEE SHEET 1 OF 3 SHEETS)

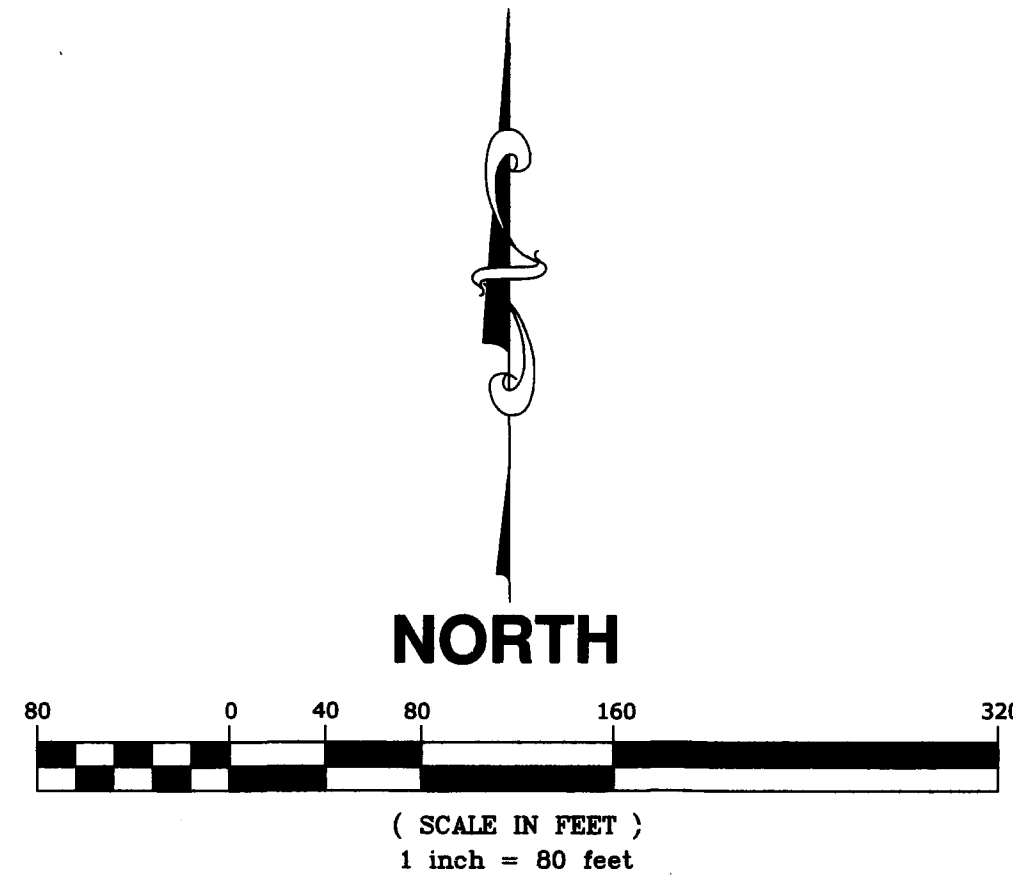


(SCALE IN FEET)
1 inch = 40 feet

E. G. RUD & SONS, INC.
EST. 1877 Professional Land Surveyors

HIDDEN FOREST EAST SECOND ADDITION

CITY OF HAM LAKE
COUNTY OF ANOKA
SEC. 25, T32N, R23W



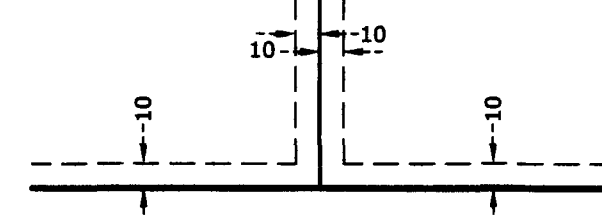
LEGEND

- DENOTES 1/2 INCH IRON MONUMENT FOUND, MARKED RLS NO. 41578, UNLESS OTHERWISE SHOWN
- DENOTES 1/2 INCH BY 14 INCH IRON PIPE SET, MARKED RLS NO. 41578

○ DENOTES WETLAND EDGE AS DELINEATED BY KJOLHAUG ENVIRONMENTAL SERVICE COMPANY IN AUGUST 2018.

FOR THE PURPOSES OF THIS PLAT, THE SOUTH LINE OF TRACT A, REGISTERED LAND SURVEY NO. 281, IS ASSUMED TO HAVE A BEARING OF SOUTH 89 DEGREES 23 MINUTES 50 SECONDS EAST.

DRAINAGE AND UTILITY EASEMENTS ARE SHOWN THUS:



BEING 10 FEET IN WIDTH AND ADJOINING RIGHT OF WAY LINES, SIDE AND REAR LOT LINES, UNLESS OTHERWISE SHOWN ON THIS PLAT.

