

HIDDEN FOREST EAST

CITY OF HAM LAKE
COUNTY OF ANOKA
SEC. 25, T32N, R23W

KNOW ALL PERSONS BY THESE PRESENTS: That HFN Properties, LLC, a Minnesota limited liability company, owner and Knoll Family LLLP, a Minnesota limited liability partnership, mortgagee, of the following described property:

The South Half of the Southeast Quarter, Section 25, Township 32, Range 23, Anoka County, Minnesota.

AND

Tract A, REGISTERED LAND SURVEY NO. 274, Anoka County, Minnesota.

Have caused the same to be surveyed and platted as HIDDEN FOREST EAST and do hereby dedicate to the public for public use the public ways and the drainage and utility easements as shown by this plat.

In witness whereof said HFN Properties, LLC, a Minnesota limited liability company, has caused these presents to be signed by its proper officer this 2nd day of August, 2017.

HFN PROPERTIES, LLC
Jeffrey A. Stalberger
Jeffrey A. Stalberger, Chief Manager

STATE OF MINNESOTA
COUNTY OF Anoka
This instrument was acknowledged before me this 2nd day of August, 2017, by Jeffrey A. Stalberger, as Chief Manager of HFN Properties, LLC, a Minnesota limited liability company.

Denise Webster
Denise Webster
Notary Public, Anoka County, Minnesota
My Commission Expires 11/31/2022

In witness whereof said Knoll Family LLLP, a Minnesota limited liability partnership, has caused these presents to be signed by its general partners this 1st day of August, 2017.

KNOLL FAMILY LLLP
Judith Ann McSherry *Kathleen M. Murray* *Jolene A. Knoll*
Judith Ann McSherry, General Partner Kathleen M. Murray, General Partner Jolene A. Knoll, General Partner

STATE OF MINNESOTA
COUNTY OF Anoka
This instrument was acknowledged before me this 1st day of August, 2017, by Judith Ann McSherry, as General Partner; Kathleen M. Murray, as General Partner; and Jolene A. Knoll, as General Partner of Knoll Family LLLP, a Minnesota limited liability partnership.

Denise Webster
Denise Webster
Notary Public, Anoka County, Minnesota
My Commission Expires 11/31/2022

I, Jason E. Rud do hereby certify that this plat was prepared by me or under my direct supervision; that I am a duly Licensed Land Surveyor in the State of Minnesota; that this plat is a correct representation of the boundary survey; that all mathematical data and labels are correctly designated on this plat; that all monuments depicted on this plat have been, or will be correctly set within one year; that all water boundaries and wet lands, as defined in Minnesota Statutes, Section 505.01, Subd. 3, as of the date of this certificate are shown and labeled on this plat; and all public ways are shown and labeled on this plat.

Dated this 31st day of July, 2017.

Jason E. Rud
Jason E. Rud, Licensed Land Surveyor
Minnesota License No. 41578

STATE OF MINNESOTA
COUNTY OF Anoka
This instrument was acknowledged before me this 31st day of July, 2017, by Jason E. Rud.

Nicole A. Johnson
Nicole A. Johnson
Notary Public, Anoka County, Minnesota
My Commission Expires January 31, 2020

City Council, City of Ham Lake, Minnesota

This plat of HIDDEN FOREST EAST was approved and accepted by the City Council of the City of Ham Lake, Minnesota at a regular meeting thereof held this 1st day of July, 2017, and said plat is in compliance with the provisions of Minnesota Statutes, Section 505.03, Subd. 2.

City Council, City of Ham Lake, Minnesota
Michael J. Voth Mayor *Samuel M. Sawyer* City Clerk

County Surveyor

I hereby certify that in accordance with Minnesota Statutes, Section 505.021, Subd. 11, this plat has been reviewed and approved this 2nd day of August, 2017.

Larry D. Hoium by Charles F. Getzen, Deputy
Larry D. Hoium
Anoka County Surveyor

County Auditor/Treasurer

Pursuant to Minnesota Statutes, Section 505.021, Subd. 9, taxes payable in the year 2017 on the land hereinbefore described have been paid. Also, pursuant to Minnesota Statutes, Section 272.12, there are no delinquent taxes and transfer entered this 2nd day of August, 2017.

Samuel M. Sawyer
Samuel M. Sawyer
Property Tax Administrator
By *Paterson* Deputy

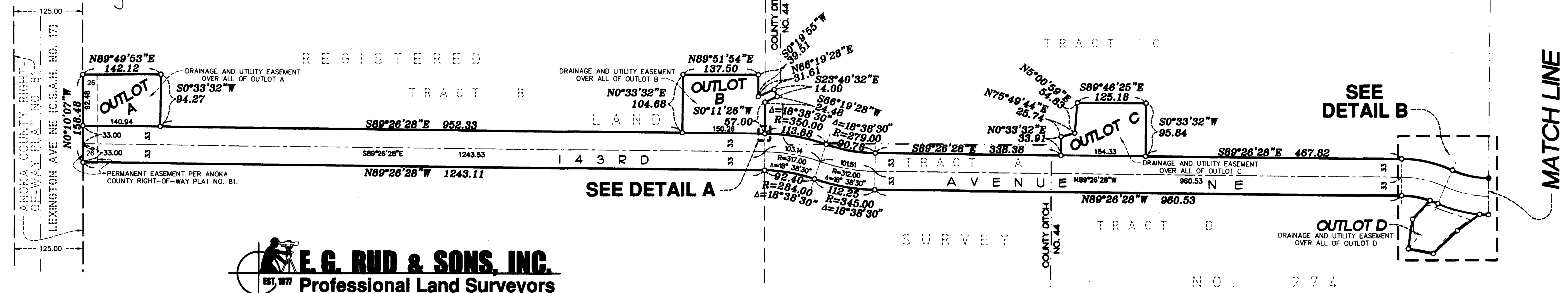
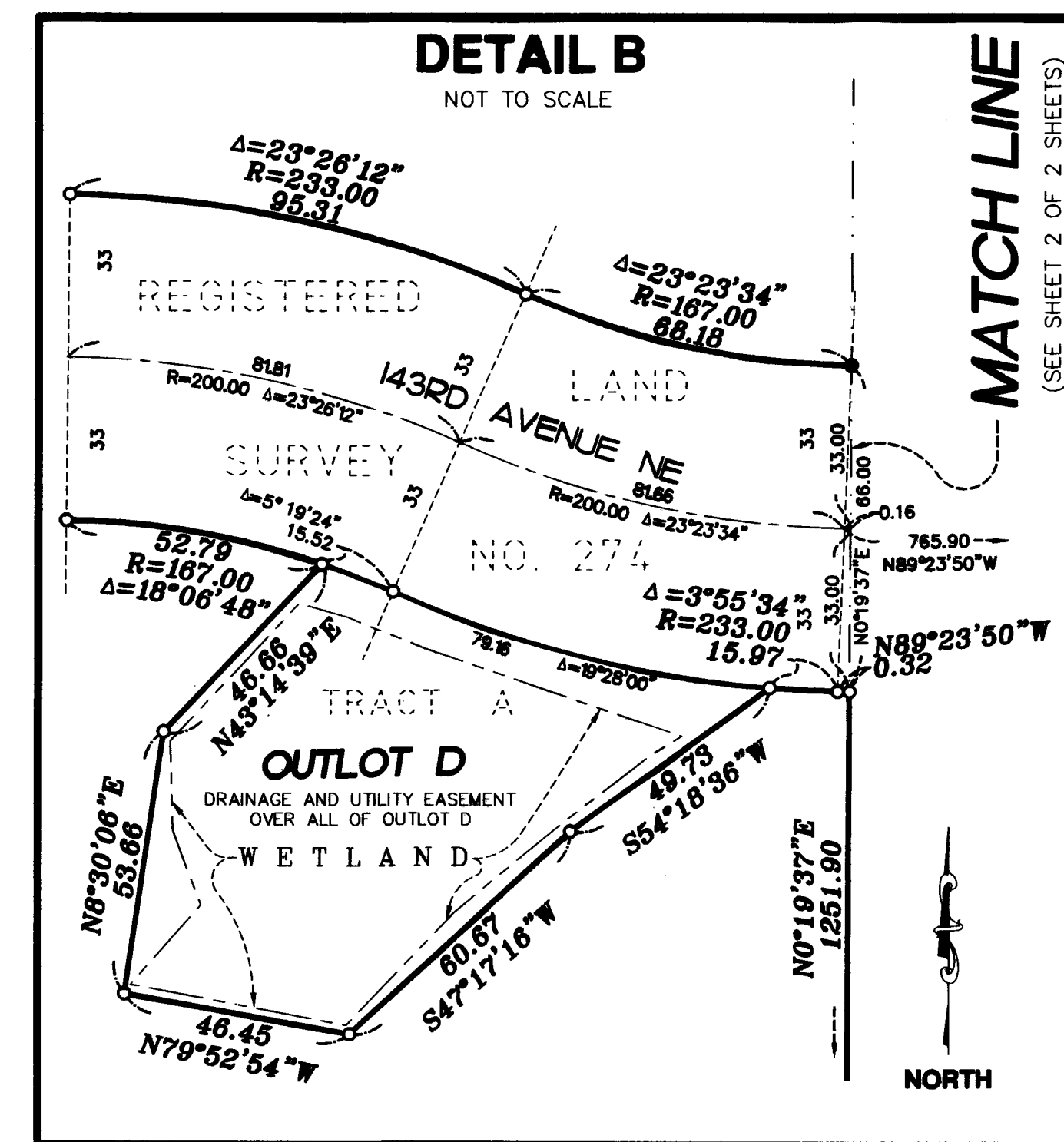
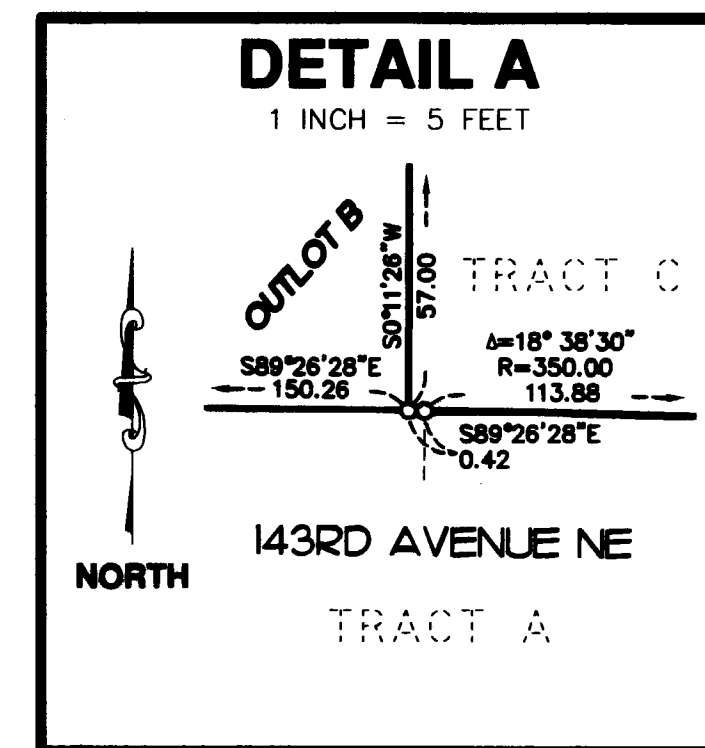
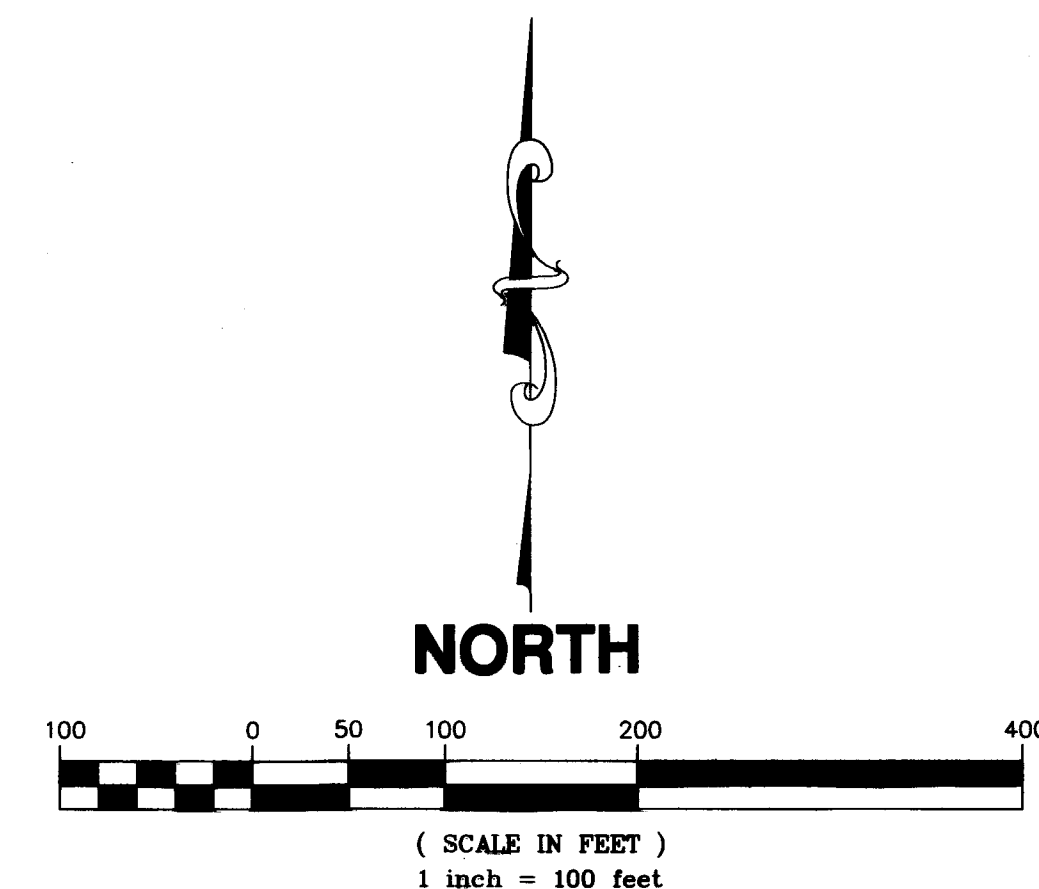
County Recorder/Registrar of Titles
County of Anoka, State of Minnesota

I hereby certify that this plat of HIDDEN FOREST EAST was filed in the office of the County Recorder/Registrar of Titles for public record on this 2nd day of August, 2017, at 14:22 o'clock P.M. and was duly recorded as Document Number 540321.001

Samuel M. Sawyer
Samuel M. Sawyer
County Recorder/Registrar of Titles
By *Paterson* Deputy

- DENOTES SET 1/2 INCH BY 14 INCH IRON PIPE MARKED BY RLS NO. 41578.
- DENOTES FOUND IRON MONUMENT, UNLESS OTHERWISE SHOWN.
- DENOTES WETLAND DELINEATION BY KUOLHAUG ENVIRONMENTAL SERVICE COMPANY IN JULY OF 2016.

FOR THE PURPOSES OF THIS PLAT THE SOUTH LINE OF SOUTH HALF OF THE SOUTHEAST QUARTER OF SECTION 25, TOWNSHIP 32 NORTH, RANGE 23 WEST, IS ASSUMED TO HAVE A BEARING OF NORTH 89 DEGREES 22 MINUTES 23 SECONDS WEST.



E. G. RUD & SONS, INC.
EST. 1877 Professional Land Surveyors

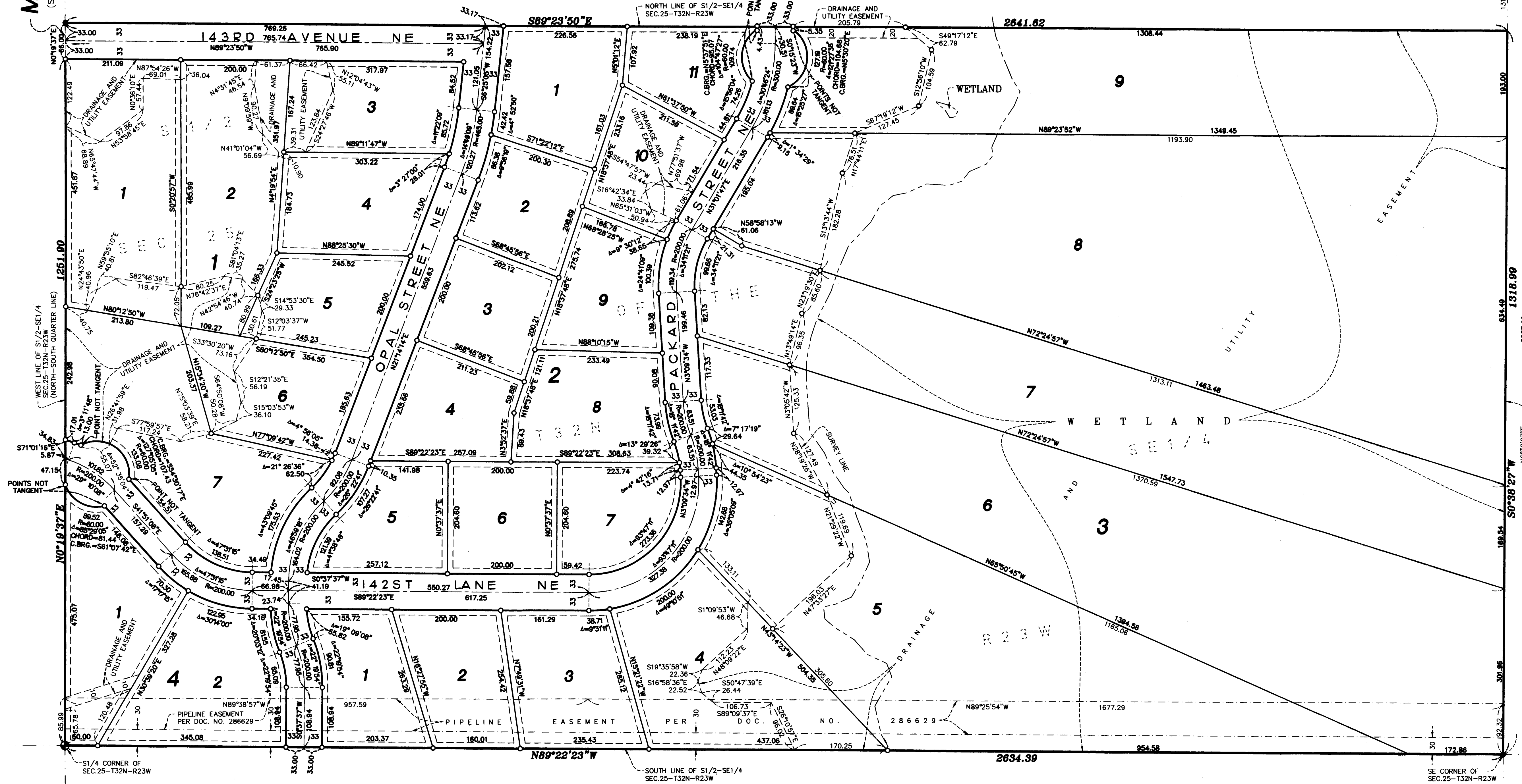
\$56.00

HIDDEN FOREST EAST

CITY OF HAM LAKE
COUNTY OF ANOKA
SEC. 25, T32N, R23W

MATCH LINE
(SEE SHEET 1 OF 2 SHEETS)

E1/4 CORNER OF
SEC. 25-T32N-R23W



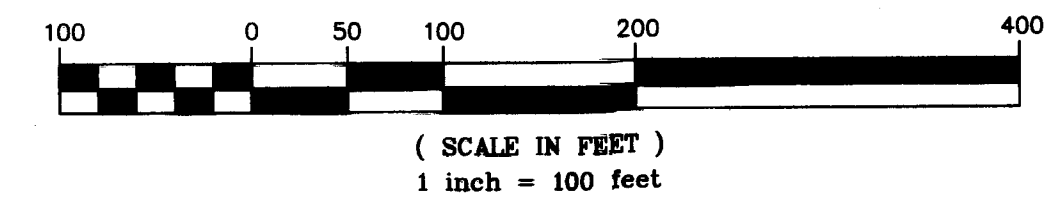
EAST LINE OF S1/2-SE1/4
SEC. 25-T32N-R23W

N0°38'27"E
1318.99

1318.99

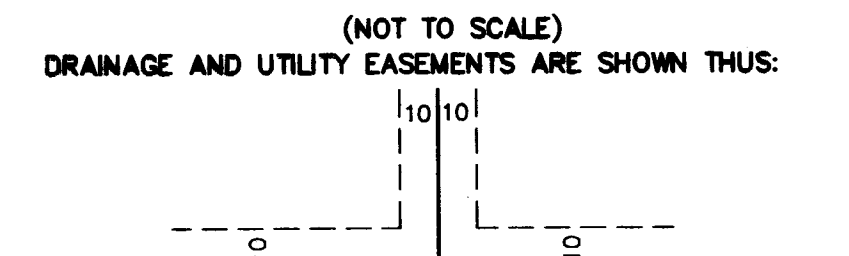
SE CORNER OF
SEC. 25-T32N-R23W

E. G. RUD & SONS, INC.
EST. 1877 Professional Land Surveyors



NORTH

- ◆ DENOTES FOUND ANOKA COUNTY MONUMENT
- DENOTES SET 1/2 INCH BY 14 INCH IRON PIPE MARKED BY RLS NO. 41578.
- DENOTES FOUND IRON MONUMENT, UNLESS OTHERWISE SHOWN.
- DENOTES FOUND CONCRETE MONUMENT
- DENOTES WETLAND DELINEATION BY KJOLHAUG ENVIRONMENTAL SERVICE COMPANY IN JULY OF 2016.



FOR THE PURPOSES OF THIS PLAT THE SOUTH LINE OF SOUTH HALF OF THE SOUTHEAST QUARTER OF SECTION 25, TOWNSHIP 32 NORTH, RANGE 23 WEST, IS ASSUMED TO HAVE A BEARING OF NORTH 89 DEGREES 22 MINUTES 23 SECONDS WEST.

BEING 10 FEET IN WIDTH AND ADJOINING RIGHT OF WAY LINES, SIDE AND REAR LOT LINES, UNLESS OTHERWISE SHOWN ON THIS PLAT.