

HIDEAWAY OF BLAINE

KNOW ALL PERSONS BY THESE PRESENTS: That J.W. Moore, Inc., a Minnesota corporation, owner of the following described property:

The West 343 feet of the East 543 feet of Tract E, Registered Land Survey No. 16, Anoka County, Minnesota EXCEPT the South 686 feet and that part lying Southerly of a curve, concave to the South, having a radius of 60.00 feet, the center of circle of said curve being 260.00 feet West of the East line of said Tract E as measured at a right angle to said East line and 653.00 feet North of the South line of said Tract E as measured at a right angle to said South line, according to the survey thereof on file and of record in the office of the Registrar of Titles in and for Anoka County, Minnesota.

Has caused the same to be surveyed and platted as HIDEAWAY OF BLAINE and does hereby dedicate to the public for public use the public way and the drainage and utility easements as shown by this plat.

In witness whereof said J.W. Moore, Inc., a Minnesota corporation, has caused these presents to be signed by its proper officer this 30th day of June, 2016.

J.W. MOORE, INC.

Jeffrey W. Moore its Pres
Jeffrey W. Moore

STATE OF MINNESOTA
COUNTY OF Anoka

This instrument was acknowledged before me this 30th day of June, 2016 by Jeffrey Moore its President of J.W. Moore, Inc., a Minnesota corporation, on behalf of the corporation.

Nicole A. Johnson
Nicole A. Johnson
Notary Public, Anoka County, Minnesota
My Commission Expires January 31, 2020

I Jason E. Rud do hereby certify that this plat was prepared by me or under my direct supervision; that I am a duly Licensed Land Surveyor in the State of Minnesota; that this plat is a correct representation of the boundary survey; that all mathematical data and labels are correctly designated on this plat; that all monuments depicted on this plat have been, or will be correctly set within one year; that all water boundaries and wet lands, as defined in Minnesota Statutes, Section 505.01, Subd. 3, as of the date of this certificate are shown and labeled on this plat; and all public ways are shown and labeled on this plat.

Dated this 30th day of JUNE, 2016.

Jason E. Rud
Jason E. Rud, Licensed Land Surveyor
Minnesota License No. 41578

STATE OF MINNESOTA
COUNTY OF Anoka

This instrument was acknowledged before me this 30th day of June, 2016 by Jason E. Rud.

Nicole A. Johnson
Nicole A. Johnson
Notary Public, Anoka County, Minnesota

My Commission Expires January 31, 2020

City Council, City of Blaine, Minnesota

This plat of HIDEAWAY OF BLAINE was approved and accepted by the City Council of the City of Blaine, Minnesota at a regular meeting thereof held this 5th day of May, 2016 and said plat is in compliance with the provisions of Minnesota Statutes, Section 505.03, Subd. 2.

City Council, City of Blaine, Minnesota

By *Tom Ryan* Mayor
By *Chad Jensen* Clerk

County Surveyor

I hereby certify that in accordance with Minnesota Statutes, Section 505.021, Subd. 11, this plat has been reviewed and approved this 5th day of August, 2016.

Larry D. Holium by *Charles F. Setzen*, Deputy
Larry D. Holium
Anoka County Surveyor

County Auditor/Treasurer

Pursuant to Minnesota Statutes, Section 505.021, Subd. 9, taxes payable in the year 2016 on the land hereinbefore described have been paid. Also, pursuant to Minnesota Statutes, Section 272.12, there are no delinquent taxes and transfer entered this 9th day of August, 2016.

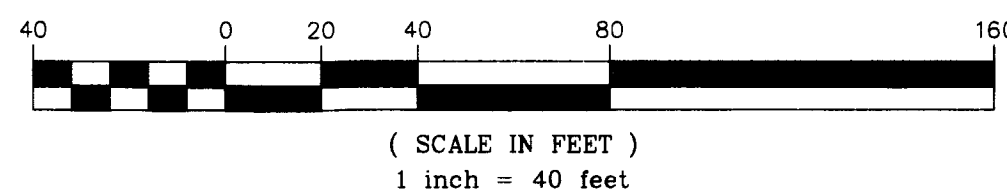
Amel M. Sawyer
Property Tax Administrator
By *J. Patterson* Deputy

County Recorder/Registrar of Titles
County of Anoka, State of Minnesota

I hereby certify that this plat of HIDEAWAY OF BLAINE was filed in the office of the County Recorder/Registrar of Titles for public record on this 5th day of August, 2016 at 1:23 o'clock P.M. and was duly recorded in Book 22, Page 40, as Document Number 540281001.

Amel M. Sawyer
County Recorder/Registrar of Titles
By *J. Patterson* Deputy

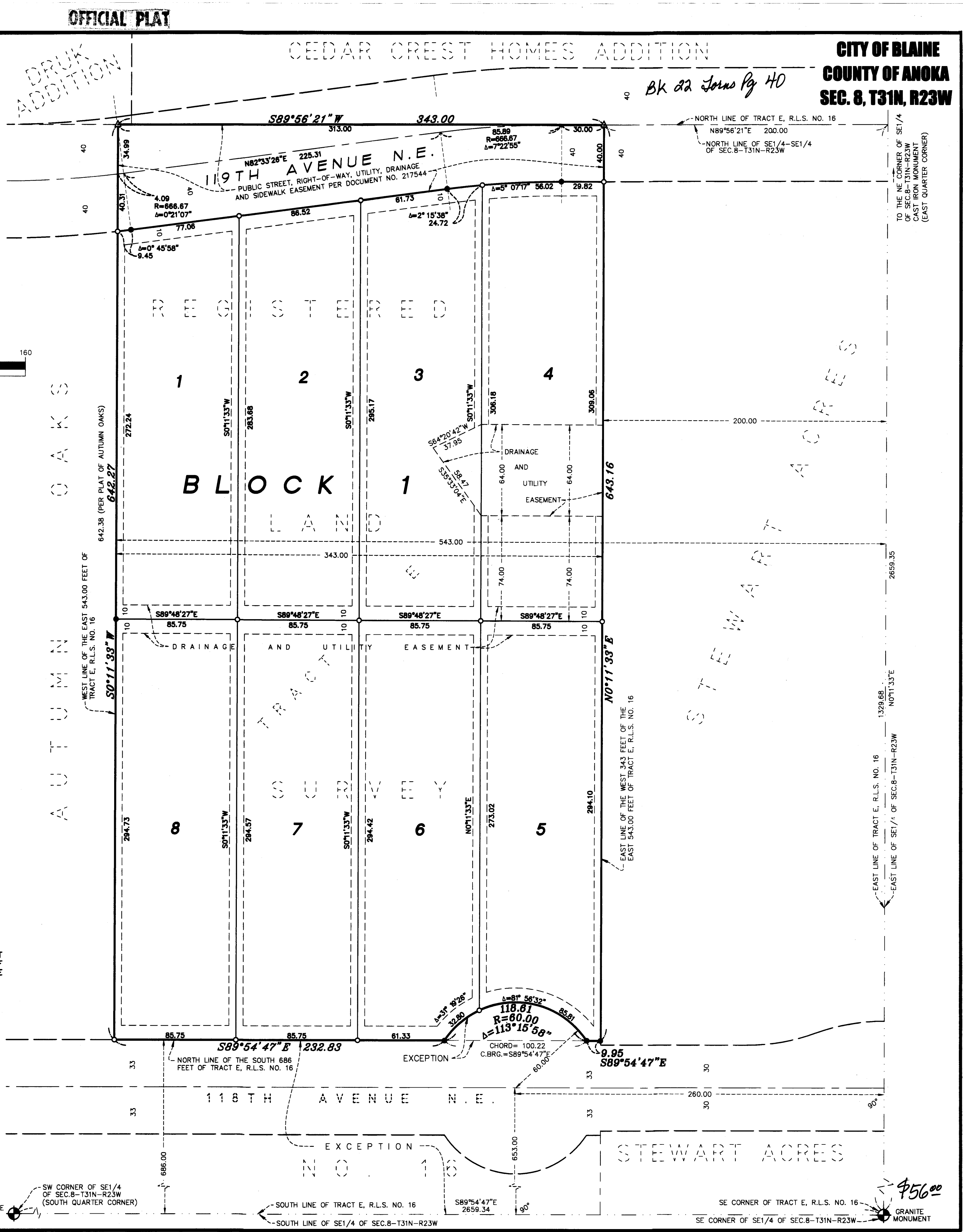
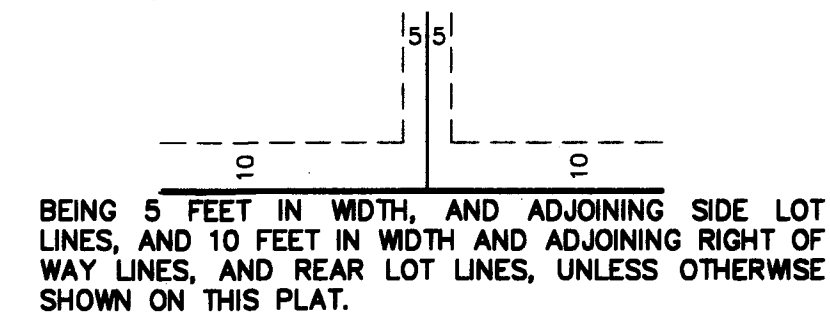
E. G. RUD & SONS, INC.
EST. 1977 Professional Land Surveyors



- ◆ DENOTES FOUND ANOKA COUNTY MONUMENT
- DENOTES SET 1/2 INCH BY 14 INCH IRON PIPE MARKED BY RLS NO. 41578.
- DENOTES FOUND IRON MONUMENT
- ▲ DENOTES PK NAIL SET

FOR THE PURPOSES OF THIS PLAT THE SOUTH LINE OF SOUTHEAST QUARTER OF SECTION 8, TOWNSHIP 31 NORTH, RANGE 23 WEST, IS ASSUMED TO HAVE A BEARING OF SOUTH 89 DEGREES 54 MINUTES 47 SECONDS EAST.

DRAINAGE AND UTILITY EASEMENTS ARE SHOWN THUS:



SW CORNER OF SE1/4 OF SEC.8-T31N-R23W (SOUTH QUARTER CORNER)
1/2" IRON PIPE

SE CORNER OF SE1/4 OF SEC.8-T31N-R23W
GRANITE MONUMENT

\$56.00