

UNPLATTED

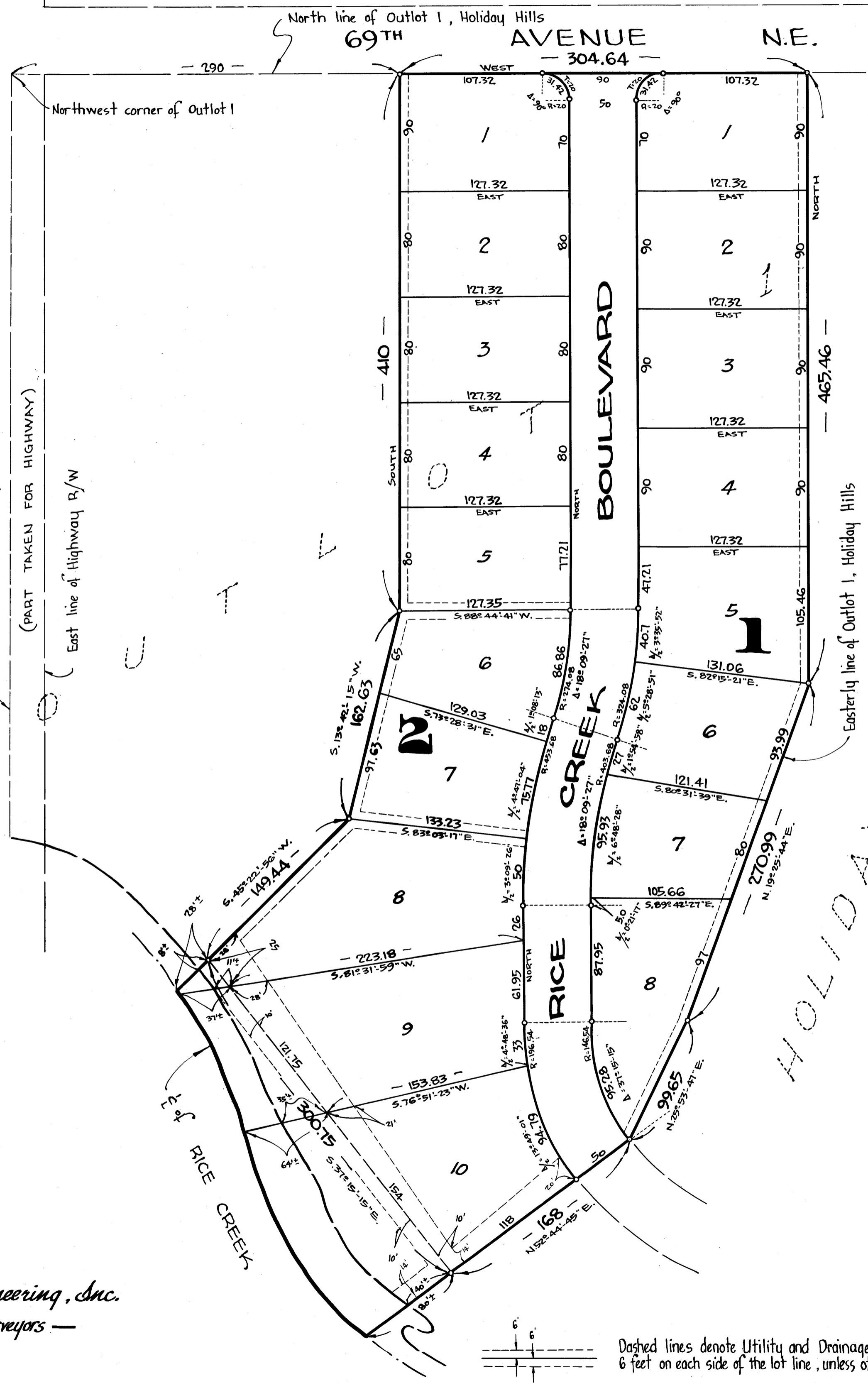
HOLIDAY HILLS 2ND

CITY of FRIDLEY COUNTY of ANOKA

o Denotes Iron Monument
Bearings shown are assumed
Scale 1"=60' January, 1965

(UNIVERSITY AVENUE)
STATE HIGHWAY No 47

West line of Outlot 1, Holiday Hills
(PART TAKEN FOR HIGHWAY)
East line of Highway B/W



NORTH

KNOW ALL MEN BY THESE PRESENTS: that Charles E. Johanson, Inc., a Minnesota Corporation, owner and proprietor of the following described property situate in the State of Minnesota and County of Anoka, to-wit: Outlot 1, Holiday Hills, lying Easterly of the following described line: Commencing at a point on the North line of said Outlot 1, said point being 290 feet East of the Northwest corner of said Outlot 1 (the North line of Outlot 1 has an assumed bearing of East); thence on a bearing of South a distance of 410 feet; thence S. 13°-42'-15" W., a distance of 162.63 feet; thence S. 45°-22'-56" W. to the centerline of Rice Creek and there terminating; has caused the same to be surveyed and platted as HOLIDAY HILLS 2ND; and do hereby donate and dedicate to the public for public use forever the Boulevard as shown on the annexed plat; subject to the Utility and Drainage Easements as shown on the annexed plat. In witness whereof Charles E. Johanson, Inc. has caused these presents to be signed by its proper officer and its corporate seal to be hereunto affixed this 27th day of May A.D. 1965.

In Presence of
Earl P. Wagner As to Charles E. Johanson
Charles E. Johanson President-Treasurer
CHARLES E. JOHANSON, INC.

State of Minnesota On this 27th day of May A.D. 1965, before me, a Notary Public within and for said County and State, personally appeared Charles E. Johanson, to me personally known, who being by me duly sworn did say that he is the President - Treasurer of Charles E. Johanson, Inc., the corporation named in the foregoing instrument; that the seal affixed to said instrument is the corporate seal of said corporation; and that said instrument was signed and sealed in behalf of said corporation by authority of its Board of Directors, and said Charles E. Johanson acknowledged said instrument to be the free act and deed of said corporation.

Carmel A. Gelhar
Notary Public, Anoka County, Minnesota
CARMEL A. GELHAR
Notary Public, Anoka County, Minn.
My Commission Expires July 29, 1968

I hereby certify that I have surveyed and platted the property described on this plat as HOLIDAY HILLS 2ND; that this plat is a correct representation of said survey; that all distances are correctly shown on the plat in feet and decimals of a foot; that the monuments for guidance of future surveys have been correctly placed in the ground as shown on the plat; that the outside boundary lines are correctly designated on the plat, and that there are no wet lands or public highways to be designated on said plat other than as shown thereon.

E. A. Rathbun
Surveyor - Minnesota Registration No. 3795

State of Minnesota The surveyors certificate subscribed and sworn to before me, a Notary Public, this 1st day of February A.D. 1965.

Walter O. Olson
Notary Public, Hennepin County, Minnesota
My Commission Expires

We hereby certify that the City Council of the City of Fridley, Anoka County, Minnesota, duly accepted and approved the annexed plat of HOLIDAY HILLS 2ND, at a regular meeting thereof held this 3rd day of May A.D. 1965.

CITY OF FRIDLEY, MINNESOTA
By *William J. Nee* Mayor
By *Mervin Brunwald* Clerk

Checked and approved this 27th day of May A.D. 1965.

Roland W. Anderson Anoka County Surveyor

Suburban Engineering, Inc.
— Engineers - Surveyors —

Dashed lines denote Utility and Drainage Easements, being 6 feet on each side of the lot line, unless otherwise indicated.

OFFICE OF REGISTER OF DEEDS
STATE OF MINNESOTA, COUNTY OF ANOKA
I hereby certify that the within instrument was filed in this office for record on the day of MAY 27 1965 A.M. 11:05 at 2:22 o'clock P.M. and was duly recorded in book 2 of Plate 22 page 14
Estroide Skinner
Register of Deeds
By *Margaret Busseff* Deputy

TAXES PAID
This 27th day of May 1965
Walter O. Olson
Auditor, Anoka County, Minn.
Raymond A. DeLoe
Deputy

I HEREBY CERTIFY THAT THE TAXES PAYABLE IN THE YEAR 1965 ON THE LANDS DESCRIBED WITHIN ARE PAID
Walter O. Olson
Anoka County Treasurer