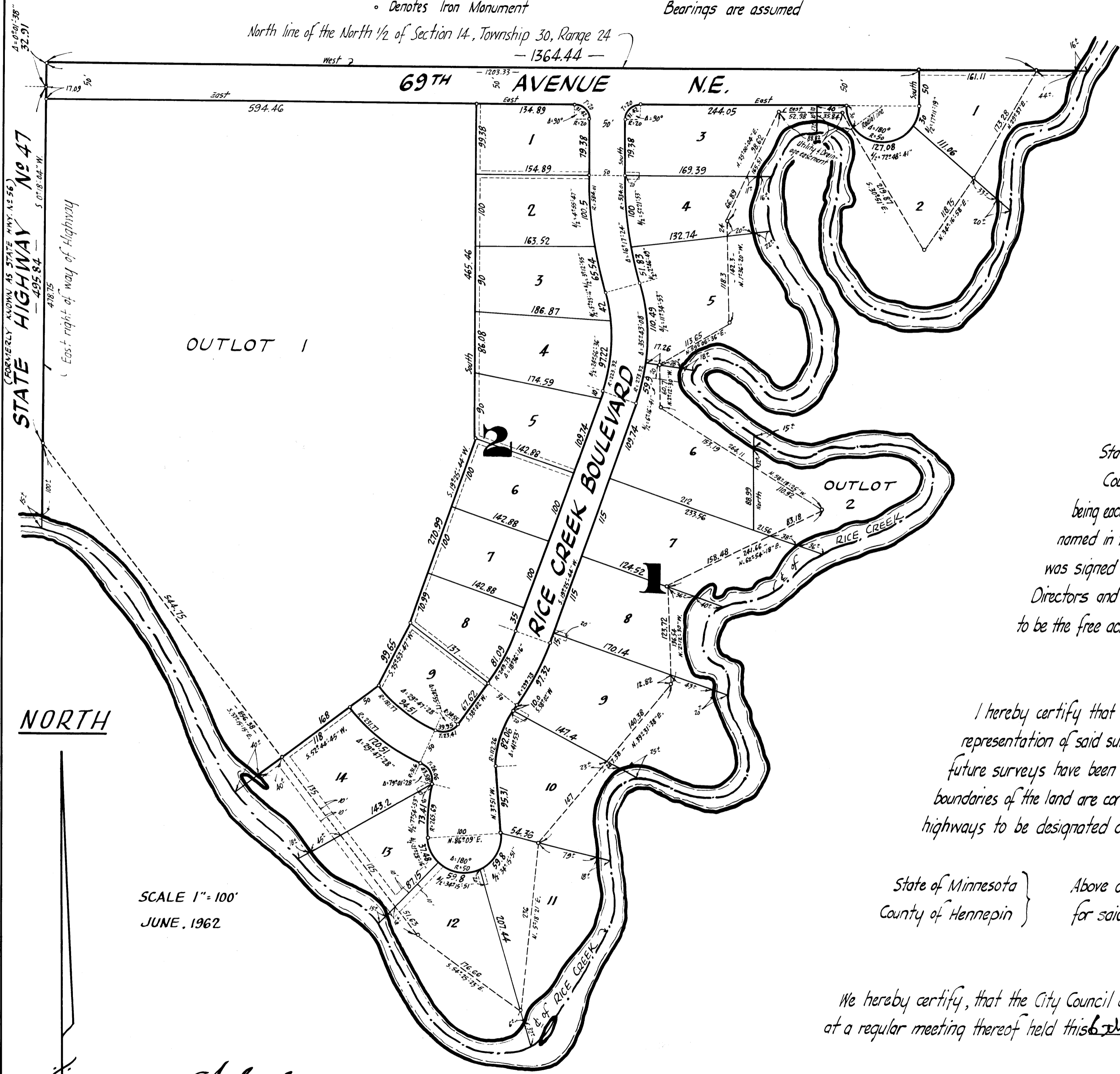


# HOLIDAY HILLS

City of Fridley County of Anoka

• Denotes Iron Monument Bearings are assumed

North line of the North 1/2 of Section 14, Township 30, Range 24  
— 1364.44 —



SCALE 1" = 100'  
JUNE, 1962

**Suburban Engineering, Inc.**  
— Engineers and Surveyors —

TAXES PAID  
This 26 day of October 1962  
Bernard W. Campbell  
Auditor, Anoka County, Minn.  
By Paul E. Lopez Deputy

Checked and approved this 26<sup>th</sup> day of October A.D. 1962.

by Roland W. Anderson Anoka County Surveyor

249307  
OFFICE OF REGISTER OF DEEDS  
STATE OF MINNESOTA, COUNTY OF ANOKA } ss  
I hereby certify that the within instrument was filed in the office for recording on the 22 day of October 1962 at 2:30 o'clock P.M. and is duly recorded in its books 2 of Plate 2  
Heretide Skinner  
By Margaret Rice Deputy

KNOW ALL MEN BY THESE PRESENTS: that E & M Development Co., a Minnesota Corporation, owner and proprietor of the following described property situate in the State of Minnesota and County of Anoka, to-wit: All that part of the North 1/2 of Section 14, Township 30, Range 24, lying Northerly of the center line of Rice Creek, except that part embraced in the plat of Rice Creek Terrace Plat 7, and lying East of State Highway No. 47, (formerly known as State Highway No. 56) Anoka County, Minnesota; have caused the same to be surveyed and platted as HOLIDAY HILLS, and do hereby donate and dedicate to the public for public use forever the Boulevard and Avenue as shown on the annexed plat, subject to the Utility and Drainage Easements as shown on the annexed plat. In witness whereof said E & M Development Co. has caused these presents to be signed by its proper officers and its corporate seal to be hereunto affixed this 22 day of October A.D. 1962.

In Presence of  
Irving Hafner } As to Irving Hafner  
Ernest Madsen } and Ernest Madsen

E & M DEVELOPMENT CO.  
Irving Hafner President  
Ernest Madsen Secretary

State of Minnesota } On this 22 day of October A.D. 1962, before me a Notary Public within and for said  
County of Anoka } County and State personally appeared Irving Hafner and Ernest Madsen, to me personally known, who being each by me duly sworn did say that they are the President and Secretary, respectively of E & M Development Co., the corporation named in the foregoing instrument, that the seal affixed to said instrument is the Corporate Seal of said corporation, and that said instrument was signed and sealed in behalf of said corporation by authority of its Board of Directors and said Irving Hafner and Ernest Madsen acknowledged said instrument to be the free act and deed of said corporation.

Suzanne Michawic  
Notary Public, Anoka County, Minnesota  
My Commission Expires \_\_\_\_\_

I hereby certify that I have surveyed and platted the property described on this plat as HOLIDAY HILLS; that this plat is a correct representation of said survey; that all distances are correctly shown on the plat in feet and decimals of a foot; that the monuments for guidance of future surveys have been correctly placed in the ground as shown on said plat; that the outside boundaries of the land are correctly designated on said plat, and that there are no wet lands or public highways to be designated on said plat other than as shown thereon.

E. A. Rathbun  
Surveyor - Minnesota Registration No. 3795

State of Minnesota } Above certificate subscribed and sworn to before me, a Notary Public within and  
County of Hennepin } for said County and State on this 18<sup>th</sup> day of July A.D. 1962.

Warren O. Olson  
Notary Public, Hennepin County, Minn.  
My Commission Expires \_\_\_\_\_

We hereby certify, that the City Council of the City of Fridley, Anoka County, Minnesota, duly accepted and approved the annexed plat of HOLIDAY HILLS, at a regular meeting thereof held this 6<sup>th</sup> day of August A.D. 1962.

CITY OF FRIDLEY, ANOKA COUNTY, MINNESOTA

I HEREBY CERTIFY THAT TAXES FOR THE YEAR 1962 ON THE LANDS DESCRIBED WITHIN ARE PAID  
Paul J. Peterson County Treasurer  
By Edward E. Ryan Deputy

by J. E. Poiry Mayor  
by Marvin Brunner Clerk

Dashed lines denotes Utility and Drainage Easements, being 6 feet on each side of the lot line, unless otherwise indicated