

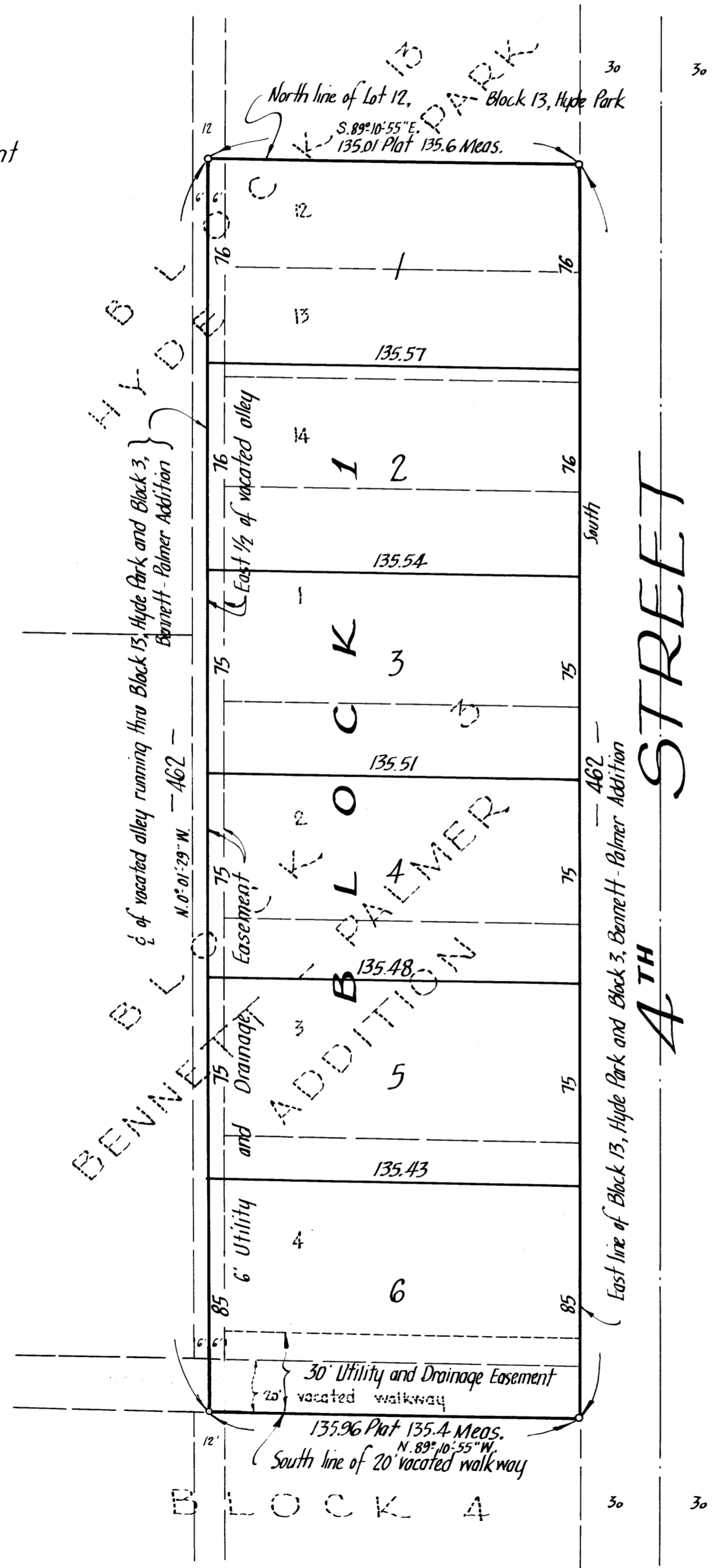
HOLLY TERRACE

— City of Fridley — County of Anoka —

Bearings are assumed
o Denotes Iron Monument



Scale 1"=40'
April, 1962



Suburban Engineering, Inc.
— Engineers & Surveyors —

KNOW ALL MEN BY THESE PRESENTS: that Dwellings, Inc., a Minnesota Corporation, owners and proprietors of the following described property situate in the State of Minnesota and County of Anoka, to-wit: Lots 12, 13 and 14, Block 13, Hyde Park and East 1/2 of the vacated alley lying immediately adjacent thereof. Lots 1, 2, 3 and 4, Block 3, Bennett-Palmer Addition and the East 1/2 of the vacated alley lying immediately adjacent thereof and also the vacated 20 feet walkway lying immediately south of the above, have caused the same to be surveyed and platted as HOLLY TERRACE; subject to the Utility and Drainage Easements as shown on the annexed plat. In witness whereof said Dwellings, Inc., has caused these presents to be signed by its proper officers and its corporate seal to be hereunto affixed this 18 day of July A.D. 1962.

In Presence of Eleanor A. Gay } As to Lawrence G. Malenfant
Dwaine W. Foss } and Sandra S. Malenfant

DWELLINGS, INC.
Lawrence G. Malenfant President
Sandra S. Malenfant Secretary

State of Minnesota } On this 18 day of July A.D. 1962, before me, a Notary Public, within and for said County and State
County of Hennepin } personally appeared Lawrence G. Malenfant and Sandra S. Malenfant, to me personally known who, being each by me duly sworn did say that they are respectively the President and Secretary of Dwellings, Inc., the corporation named in the foregoing instrument, and that the seal affixed to said instrument is the corporate seal of said corporation, and that said instrument was signed in behalf of said Corporation by authority of its Board of Directors and said Lawrence G. Malenfant and Sandra S. Malenfant acknowledged said instrument to be the free act and deed of said Corporation.

Eleanor A. Gay
Notary Public, Hennepin County, Minnesota
My Commission Expires _____

ELEANOR A. GAY
Notary Public, Hennepin County, Minn.
My Commission Expires Dec. 9, 1965

I hereby certify that I have surveyed and platted the property described on this plat as HOLLY TERRACE; that this plat is a correct representation of said survey; that all distances are correctly shown on the plat in feet and decimals of foot; that the monuments for guidance of future surveys have been correctly placed in the ground as shown on said plat; that the outside boundary lines are correctly designated on said plat, and that there are no wet lands or public highways to be designated on said plat other than are shown thereon.

E. A. Rattlun
Surveyor - Minnesota Registration N° 3795

State of Minnesota } Above certificate subscribed and sworn to before me a Notary
County of Hennepin } Public within and for said State and County on this 19th day of April A.D. 1962.

Warren O. Olson
Notary Public, Hennepin County, Minnesota
My Commission Expires _____

WARREN O. OLSON
Notary Public, Hennepin County, Minn.
My Commission Expires February 12, 1967

We hereby certify that the City Council of the City of Fridley, Anoka County, Minnesota, duly accepted and approved the annexed plat of HOLLY TERRACE, at a regular meeting thereof held this 27th day of June A.D. 1962.

CITY OF FRIDLEY, ANOKA COUNTY, MINNESOTA

Checked and approved this 15th day of August A.D. 1962.

by Roland W. Anderson
Anoka County Surveyor

by T. E. Zeig Mayor

by Marvin C. Brunner Clerk

I HEREBY CERTIFY THAT TAXES FOR THE YEAR 1961 ON THE LANDS DESCRIBED WITHIN ARE PAID
Pearl J. Peterson
County Treasurer

TAXES PAID
This 15th day of Dec 1962
Kenwith J. Campbell
Auditor, Anoka County, Minn.
Robert A. Peterson Deputy

Office of REGISTRAR OF TITLES
STATE OF MINNESOTA
COUNTY OF ANOKA
I hereby certify that the within instrument was filed in this office on the _____ day of _____ A.D. 1962.
Bertranda Skinner Registrar of Titles
Edwin Boettcher DEPUTY REGISTRAR OF TITLES