

# HOMESTEAD ESTATES 2ND ADDITION

CITY OF HAM LAKE

COUNTY OF ANOKA

KNOW ALL PERSONS BY THESE PRESENTS: That Continental Development Corporation, a Minnesota corporation, owner and proprietor of the following described property situated in the County of Anoka, State of Minnesota, to-wit:

Outlot C, HOMESTEAD ESTATES, according to the recorded plat thereof, Anoka County, Minnesota.

Has caused the same to be surveyed and platted as HOMESTEAD ESTATES 2ND ADDITION and does hereby donate and dedicate to the public for public use forever the drainage and/or utility easements as shown on the plat. Also dedicating to the County of Anoka the right of access onto County Road Number 52 as shown on the plat. In witness whereof said Continental Development Corporation has caused these presents to be signed by its proper officer this 23<sup>rd</sup> day of July, 1998.

CONTINENTAL DEVELOPMENT CORPORATION:

Charles S. Cook, President  
Charles S. Cook

STATE OF MINNESOTA) The foregoing instrument was acknowledged before me this 23<sup>rd</sup> day of July, 1998, by Charles S. Cook, COUNTY OF Anoka as President of Continental Development Corporation, a Minnesota corporation, or behalf of the corporation.

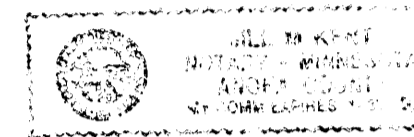


Kirk Brian Corson  
Notary Public, Anoka County, Minnesota  
My commission expires 1/31/2000

I hereby certify that I have surveyed and platted the land described in the dedication on this plat as HOMESTEAD ESTATES 2ND ADDITION; that the plat is a correct representation of said survey; that all distances are correctly shown on said plat in feet and hundredths of a foot; that all monuments have been correctly placed in the ground as shown, or shall be correctly placed in the ground within one year of the recording of this plat, that the outside boundaries are correctly designated on said plat, and that there are no wetlands or public highways to be designated on said plat other than as shown thereon.

Jeffrey N. Caine  
Jeffrey N. Caine, Registered Land Surveyor  
Minnesota Registration No. 12251

STATE OF MINNESOTA) The surveyors certificate was acknowledged before me a Notary Public, this 15<sup>th</sup> day of July, 1998  
COUNTY OF ANOKA ) by Jeffrey N. Caine, Land Surveyor.



Jill M Kent  
Notary Public, Anoka County, Minnesota  
My Commission expires 01-31-00

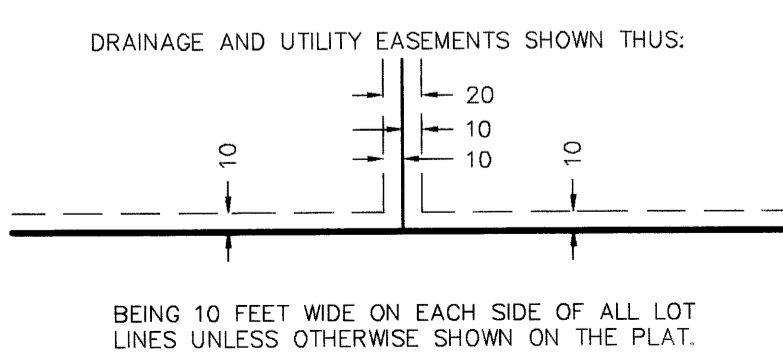
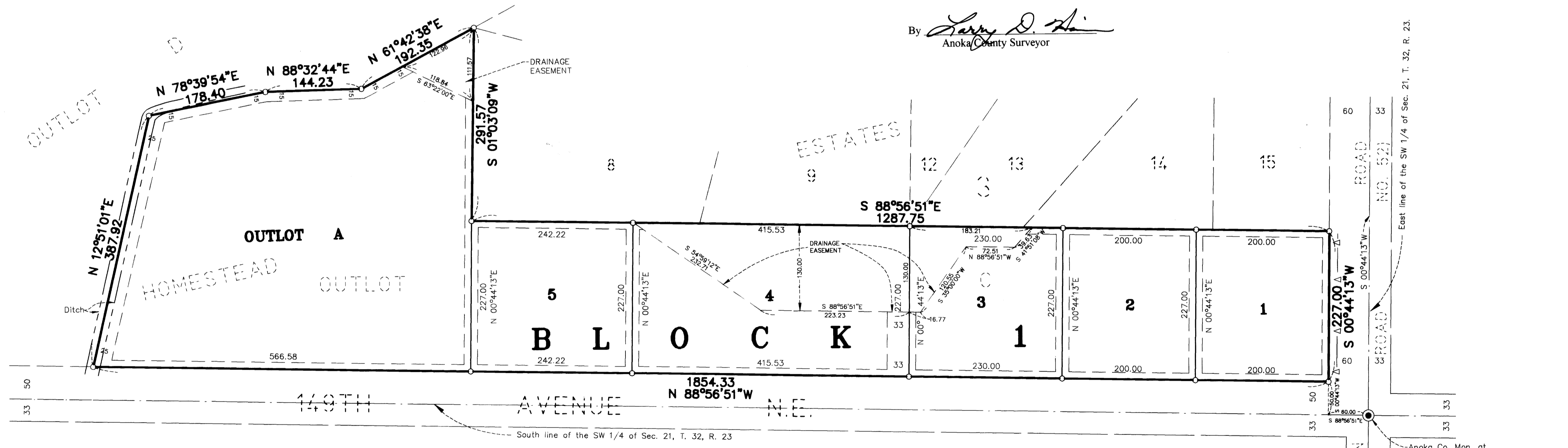
CITY OF HAM LAKE

We hereby certify that the City Council of the City of Ham Lake, Anoka County, Minnesota, duly accepted and approved the plat of HOMESTEAD ESTATES 2ND ADDITION at a regular meeting held this 20<sup>th</sup> day of July, 1998. If applicable, the written comments and recommendations of the Commissioner of Transportation and the County Highway Engineer have been received by the city or the prescribed 30 day period has elapsed without receipt of such comments and recommendations, as provided by Minn. Statutes, Section 505.03, Subd. 2.

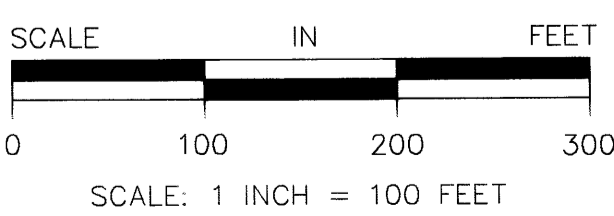
By [Signature] Mayor By David A. Niska Clerk

Checked and approved this 30<sup>th</sup> day of SEPTEMBER, 1998.

By Larry D. Shi  
Anoka County Surveyor



● DENOTES ANOKA COUNTY MONUMENT  
○ DENOTES IRON MONUMENT FOUND  
○ DENOTES 1/2 INCH BY 14 INCH IRON MONUMENT WHICH HAS BEEN SET, OR SHALL BE SET WITHIN 1 YEAR OF THE RECORDING OF THIS PLAT.  
△ DENOTES RIGHT OF ACCESS DEDICATED TO ANOKA CO.  
NOTE: FOR THE PURPOSES OF THIS PLAT, THE E. LINE OF THE SW. 1/4 OF SEC. 21, T. 32, R. 23, IS ASSUMED TO BEAR S 00°44'13" W.



I HEREBY CERTIFY THAT THE CURRENT AND DELINQUENT TAXES ON THE LANDS DESCRIBED WITHIN ARE PAID AND THE TRANSFER IS  
ENTERED Sept. 30 1998  
EDWARD M. TRESKA  
PROPERTY TAX ADMINISTRATOR  
BY [Signature]  
PROPERTY TAX ADMINISTRATOR

1374555  
OFFICE OF COUNTY RECORDER  
STATE OF MINNESOTA, COUNTY OF ANOKA  
I hereby certify that the within instrument was filed in this office for record on the Sept 30 A.D., 1998 at 10:45 o'clock A.M., and was duly recorded in book 56 ABST page 17  
Edward M. Treska  
County Recorder  
By LTA  
Bookly

CAINE & ASSOCIATES  
LAND SURVEYORS, INC.

Receipt no. 98099462 \$ 275.00