

HOMESTEAD ESTATES 3RD ADDITION

City of Ham Lake
County of Anoka
Sec. 21, Twp. 32, Rge. 23

KNOW ALL PERSONS BY THESE PRESENTS: That Continental Development Corporation, a Minnesota corporation, owner and proprietor of the following described property situated in the County of Anoka, State of Minnesota, to-wit:

Outlot A, HOMESTEAD ESTATES 2ND ADDITION, according to the recorded plat thereof, Anoka County, Minnesota.

AND that Charles S. Cook and Kathy M. Cook, husband and wife, owners and proprietors of the following described property situated in the County of Anoka, State of Minnesota, to-wit:

That part of Outlot D, HOMESTEAD ESTATES, according to the recorded plat thereof, Anoka County, Minnesota, described as follows:

Beginning at the most northerly, northwest corner of said Outlot D; thence South 00 degrees 57 minutes 20 seconds West, assumed bearing, along the westerly boundary line thereof, a distance of 272.40 feet to an angle point in said westerly boundary line; thence South 89 degrees 02 minutes 40 seconds East, along said boundary line, a distance of 150.00 feet to an angle point in said line; thence South 00 degrees 57 minutes 20 seconds West, along said boundary line, a distance of 200.00 feet to an angle point in said line; thence South 89 degrees 02 minutes 40 seconds East, along said boundary line and its easterly extension, a distance of 484.55 feet; thence North 00 degrees 50 minutes 47 seconds East, a distance of 164.64 feet to the intersection with the northeasterly line of said Outlot D; thence North 50 degrees 31 minutes 24 seconds West, along said northeasterly line, a distance of 290.71 feet to an angle point in said northeasterly line; thence North 71 degrees 44 minutes 37 seconds West, along said northeasterly line, a distance of 426.06 feet to the point of beginning.

Have caused the same to be surveyed and platted as HOMESTEAD ESTATES 3RD ADDITION and do hereby donate and dedicate to the public for public use forever the lane, street, and drainage and utility easements as shown on the plat. In witness whereof said Continental Development Corporation has caused these presents to be signed by its proper officer this 23rd day of August, 2007. Also in witness whereof said Charles S. Cook and Kathy M. Cook have hereunto set their hands this 23rd day of August, 2007.

CONTINENTAL DEVELOPMENT CORPORATION

Richard Haluptzok
Richard Haluptzok, as Vice President

SIGNED:

Charles S. Cook
Charles S. Cook

Kathy M. Cook
Kathy M. Cook

STATE OF MINNESOTA) The foregoing instrument was acknowledged before me this 23rd day of August, 2007, by Richard Haluptzok, as Vice President of Continental Development Corporation, a Minnesota corporation, on behalf of the corporation.

Carrie A. Albrecht
CARRIE A. ALBRECHT
NOTARY PUBLIC - MINNESOTA
My Commission Expires Jan. 31, 2010

Carrie A. Albrecht
Carrie A. Albrecht
Notary Public, Anoka County, Minnesota
My Commission expires 1-31-10

STATE OF MINNESOTA) The foregoing instrument was acknowledged before me this 23rd day of August, 2007, by Charles S. Cook and Kathy M. Cook, COUNTY OF Anoka husband and wife.

Book 74 of Abst Page 19

Carrie A. Albrecht
CARRIE A. ALBRECHT
NOTARY PUBLIC - MINNESOTA
My Commission Expires Jan. 31, 2010

Carrie A. Albrecht
Carrie A. Albrecht
Notary Public, Anoka County, Minnesota
My Commission expires 1-31-10

I hereby certify that I have surveyed and platted the land described in the dedication on this plat as HOMESTEAD ESTATES 3RD ADDITION; that this plat is a correct representation of said survey; that all distances are correctly shown on said plat in feet and hundredths of a foot; that all monuments have been correctly placed in the ground as shown, or shall be correctly placed in the ground within one year after the recording date of this plat; that the outside boundaries are correctly designated on said plat; and that there are no wetlands, in accordance with M.S. 505.01 Subdivision 3, or public highways to be designated on said plat other than as shown thereon.

Jeffrey N. Caine
Jeffrey N. Caine, Registered Land Surveyor
Minnesota License No. 12251

STATE OF MINNESOTA) The surveyors certificate was acknowledged before me a Notary Public, this 21st day of August, 2007, by Jeffrey N. COUNTY OF ANOKA) Caine, Land Surveyor.

Jill M. Kent
JILL M. KENT
NOTARY PUBLIC - MINNESOTA
My Commission Expires Jan. 31, 2010

Jill M. Kent
Jill M. Kent
Notary Public, Anoka County, Minnesota
My Commission expires 01-31-10

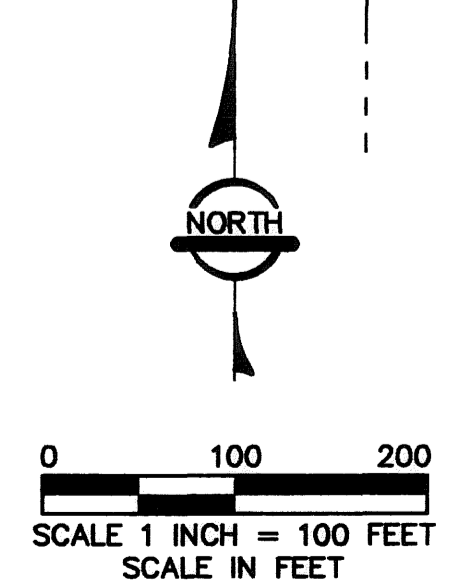
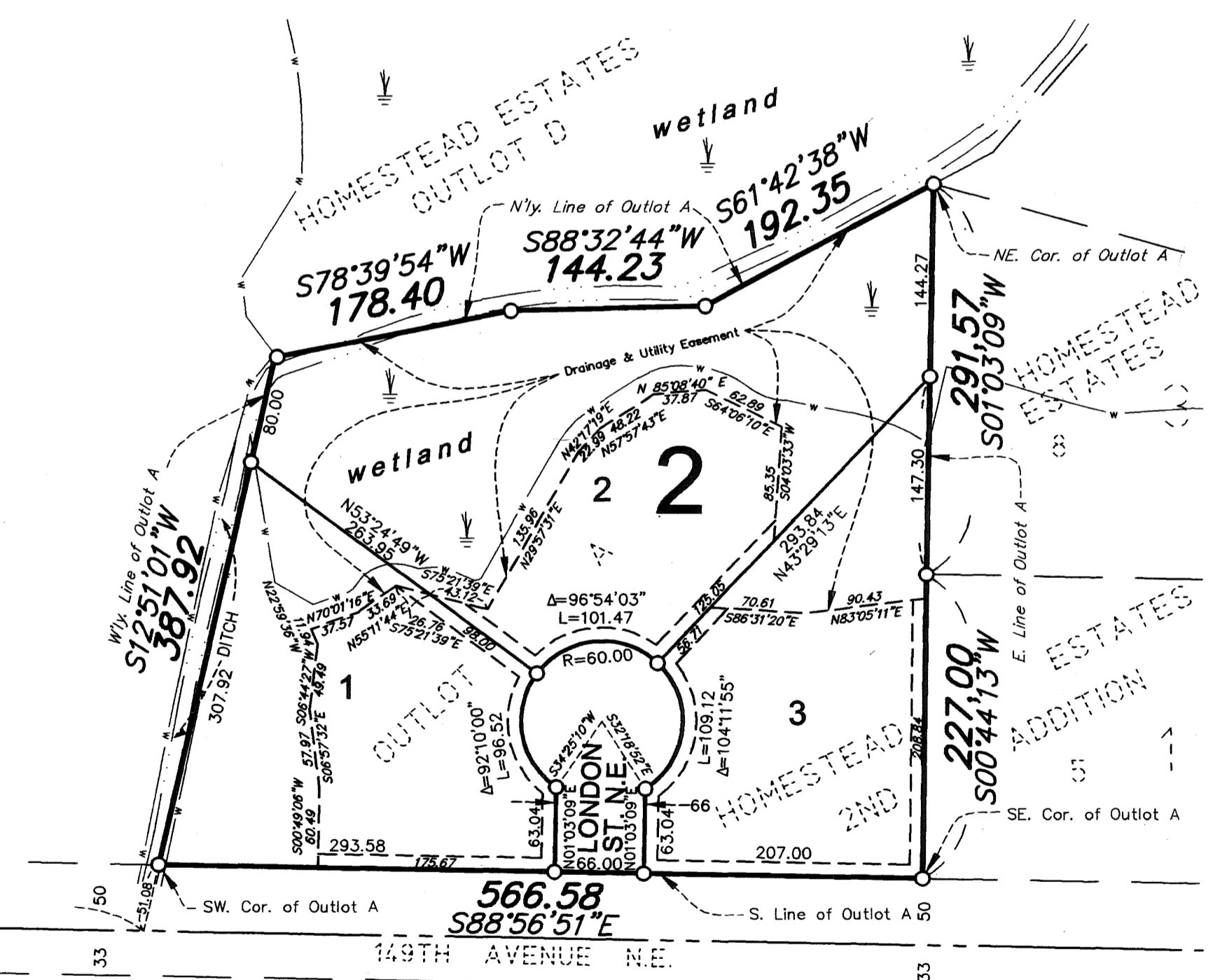
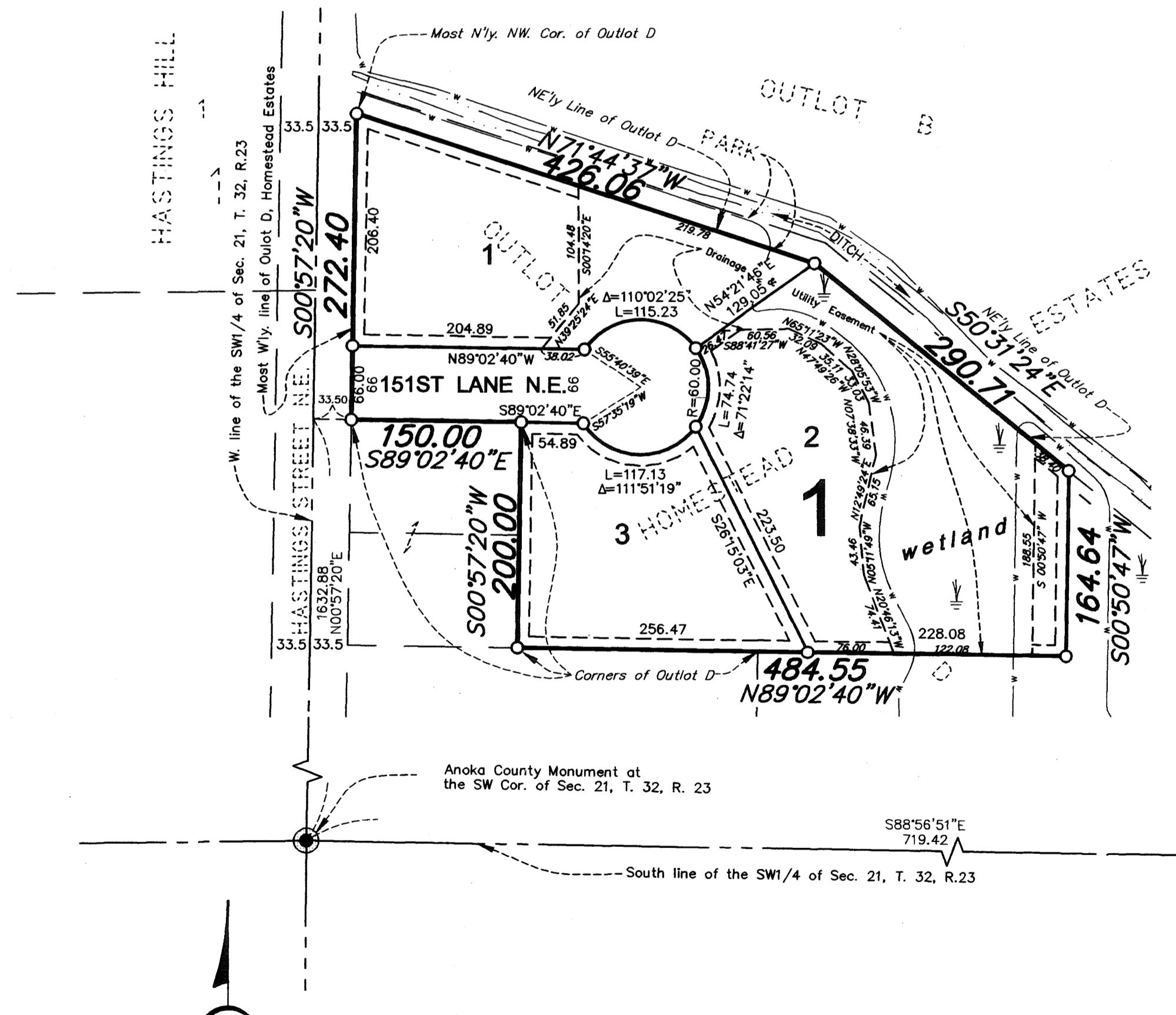
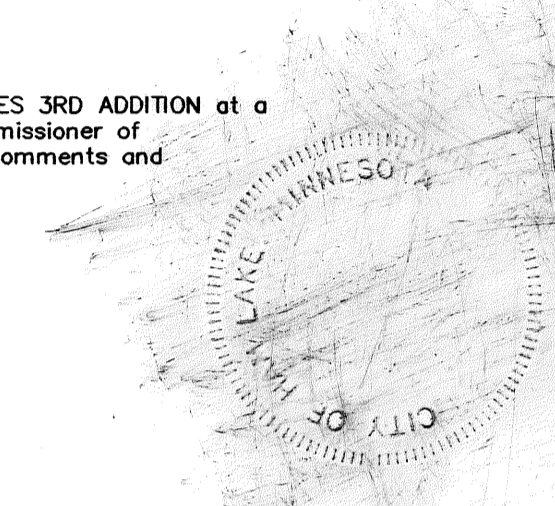
CITY OF HAM LAKE

We hereby certify that the City Council of the City of Ham Lake, Anoka County, Minnesota, duly accepted and approved the plat of HOMESTEAD ESTATES 3RD ADDITION at a regular meeting held this 20 day of February, 2007. If applicable, the written comments and recommendations of the Commissioner of Transportation and the County Highway Engineer have been received by the city or the prescribed 30 day period has elapsed without receipt of such comments and recommendations, as provided by Minn. Statutes, Section 505.03, Subd. 2.

By *Ken* Mayor By *Blaine A. Nyska* Clerk

Checked and approved this 12th day of October, 2007.

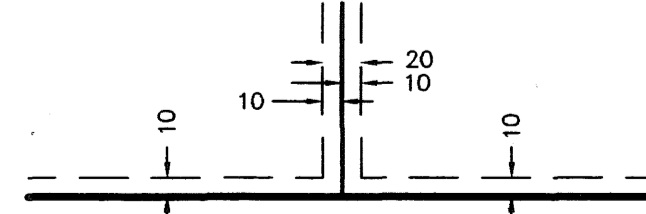
By *Larry O. Holum*
Larry O. Holum
Anoka County Surveyor
by *Charles F. Gehring, Deputy*



PORTIONS OF LOTS 1 AND 2, BLOCK 1, AND LOTS 1, 2, AND 3, BLOCK 2 ARE ENCUMBERED BY A CONSERVATION EASEMENT RECORDED AS DOC. NO. 1994207.003

FOR THE PURPOSES OF THIS PLAT, THE WEST LINE OF THE SW 1/4 OF SEC. 21, T. 32, R. 23, ANOKA COUNTY, MINNESOTA, IS ASSUMED TO BEAR S00°57'20"W.

DRAINAGE AND UTILITY EASEMENTS SHOWN THUS:



BEING 10 FEET WIDE ON EACH SIDE OF ALL LOT LINES UNLESS OTHERWISE SHOWN ON THE PLAT.

- DENOTES FOUND MONUMENT.
- DENOTES A MONUMENT REQUIRED BY MINNESOTA STATE STATUTE WHICH WILL BE SET WITHIN ONE YEAR OF THE RECORDING DATE OF THIS PLAT, AND SHALL BE EVIDENCED BY A 1/2" INCH BY 14 INCH IRON PIPE MARKED BY RLS 12251.
- ⊙ DENOTES ANOKA COUNTY MONUMENT.

1996503.001
OFFICE OF COUNTY RECORDER
STATE OF MINNESOTA, COUNTY OF ANOKA
I hereby certify that the within instrument was filed in this office for record on the 15 Oct A.D., 2007
at 3:11 o'clock P.M., and was duly recorded in book 74, page 19
Maureen J. Devine
County Recorder
By *CGT*

I HEREBY CERTIFY THAT THE CURRENT AND DELINQUENT TAXES ON THE LANDS DESCRIBED WITHIN ARE PAID AND THE TRANSFER IS ENTERED
Oct 15, 2007
MAUREEN J. DEVINE
PROPERTY TAX ADMINISTRATOR
BY *S. Culver*
DEPUTY PROPERTY TAX ADMINISTRATOR



Duluth, MN
Ham Lake, MN
Hibbing, MN
Minnetonka, MN
Phone: 763 434 7646
Fax: 763 434 8007
www.rlkinc.com

1321 Andover Boulevard Suite 114 Ham Lake, MN 55304

\$56.00