

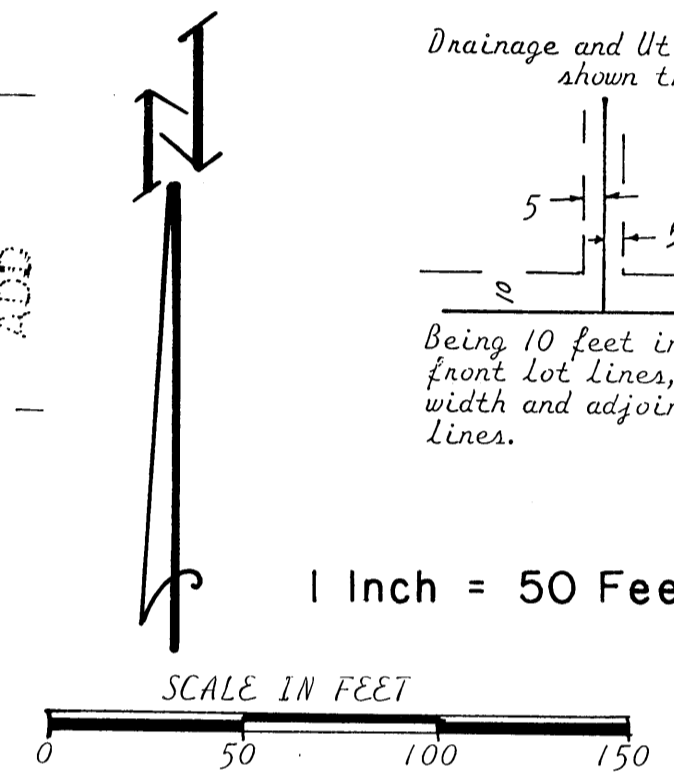
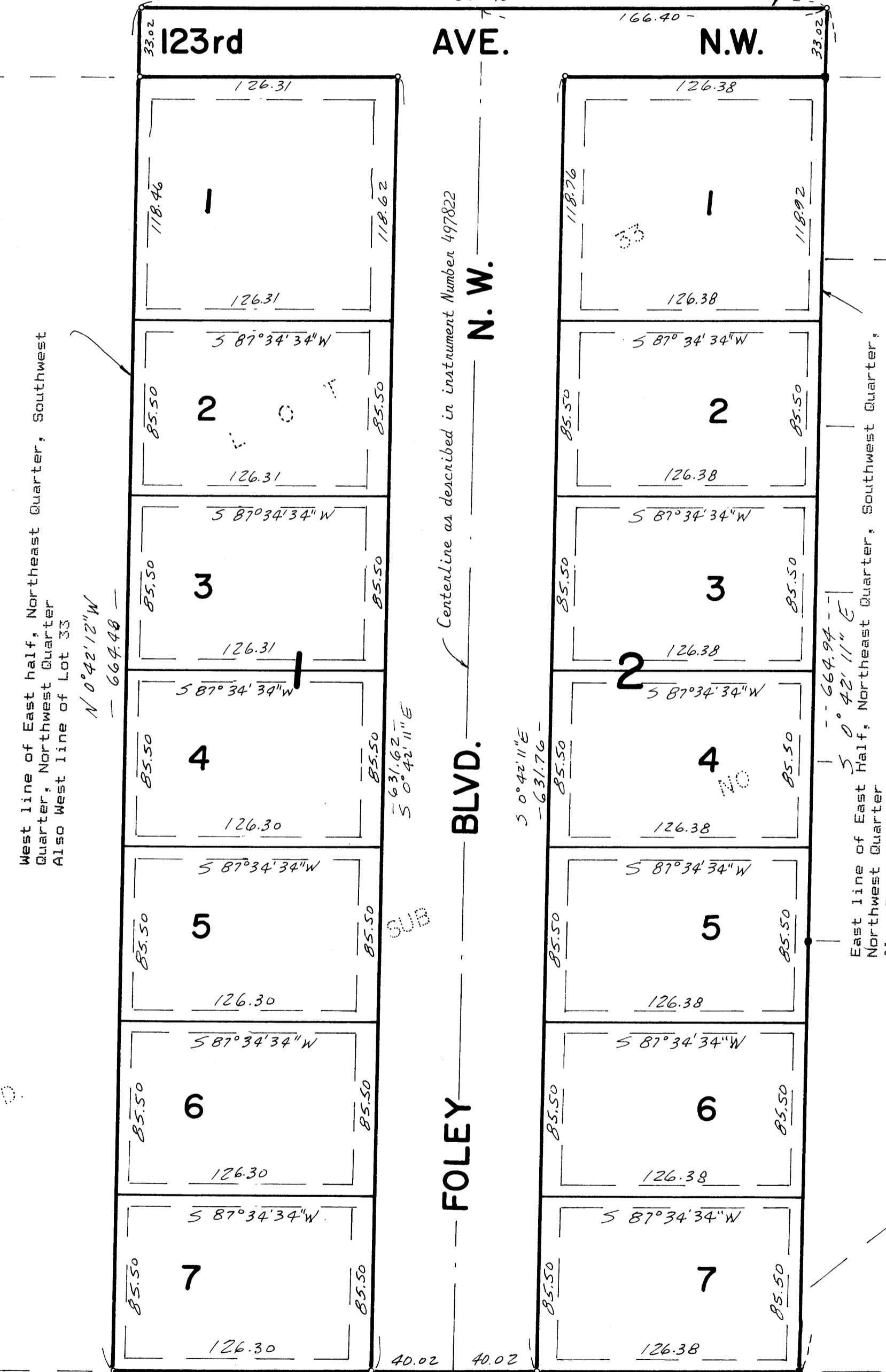
HOSKINS ADDITION

City of Coon Rapids
Anoka County, Minnesota

MURRAY ADDITION
North line of East half, Northeast Quarter, Southwest Quarter, Northwest Quarter, Sec. 12, T.31, R.24
Also North line of Lot 33

123rd AVE. N.W. 166.40

Jim Kyro & Associates, Inc.
PROFESSIONAL LAND SURVEYORS
AND LAND DEVELOPMENT CONSULTANTS



Drainage and Utility Easements are shown thus:

Being 10 feet in width and adjoining front lot lines, also being 5 feet in width and adjoining side and rear lot lines.

The bearings shown are on an assumed basis. For the purposes of this plat the north line is assumed to have a bearing of North 87 degrees 29 minutes 46 seconds East.

888134

- Denotes Found Iron Monument
- Denotes Iron Pipe set with a plastic plug stamped RLS 12267

OFFICE OF COUNTY RECORDER
STATE OF MINNESOTA, COUNTY OF ANOKA
I hereby certify that the above instrument was recorded on APR 5 1990 at 10:52 A.M. in Book 42 of Plats 2.
By Red J. Dondell
Notary Public, Anoka County, Minnesota

I hereby certify that I have surveyed and platted the property described in this plat as HOSKINS ADDITION and that this plat is a correct representation of said survey; that all monuments have been correctly placed in the ground as shown on the plat; that all distances are correctly shown on the plat in feet and hundredths of a foot; that the outside boundary lines are correctly designated on the plat; and that there are no wet lands or public highways to be designated on the plat other than as shown thereon.

James R. Kyro
James R. Kyro, Land Surveyor
Minnesota License No. 12267

STATE OF MINNESOTA
COUNTY OF HENNEPIN
The foregoing instrument was acknowledged before me this 3rd day of August, 1989 by James R. Kyro, Land Surveyor

Jeanette R. Kyro
Notary Public, Hennepin County, Minnesota
My Commission Expires June 26, 1991

KNOW ALL MEN BY THESE PRESENTS: That L. D. K. Builders, Inc., a Minnesota Corporation, fee owners of the following described property situated in the State of Minnesota, County of Anoka, to wit:

Lot 33, AUDITOR'S SUBDIVISION NO. 127

Have caused the same to be surveyed and platted as HOSKINS ADDITION, and do hereby donate and dedicate to the public for public use forever the Avenue and Boulevard as shown on this plat. Also dedicating to the public, the easements as shown on this plat for drainage and utility purposes only. Also dedicating to the City of Coon Rapids the right of access to Foley Boulevard from Lot 1, Block 1 and Lot 1, Block 2, of said plat.

In witness whereof said L. D. K. Builders, Inc., a Minnesota Corporation, has caused these presents to be signed by its proper officers this 20 day of December, 1989.

SIGNED: L.D.K. BUILDERS, INC. A MINNESOTA CORPORATION
By Larry D. Kuperus its President

STATE OF MINNESOTA
COUNTY OF Anoka
The foregoing instrument was acknowledged before me this 20 day of December, 1989, by Larry D. Kuperus its President and by _____ its _____ of L. D. K. Builders, Inc., a Minnesota Corporation on behalf of the corporation.

Mary Beth Long
Notary Public, Wright County, Minnesota
My Commission Expires 10-9-91

Annexed plat of HOSKINS ADDITION was approved by the Planning Commission of the City of Coon Rapids, Minnesota this 18th day of December, 1986.
By Donna M. Haue, Chairman

Annexed plat of HOSKINS ADDITION was approved by the City Council of Coon Rapids, Minnesota at a regular meeting thereof held this 7th day of April, 1987.
If applicable, the written comments and recommendations of the Commissioner of Transportation and the County Highway Engineer have been received by the City or the prescribed 30 day period has elapsed without receipt of such comments and recommendations, as provided by Minnesota Statutes Section 505.03, Subd. 2.

By Richard S. Reiter, Mayor

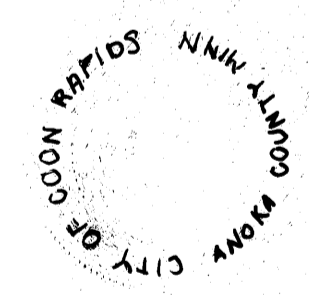
Attest: Suzanne Menzies, Clerk Deputy

This plat has been checked and approved this 20th day of March, 1990.

MERLYN D. ANDERSON by Larry D. Anderson
Anoka County Surveyor deputy

"NO DELINQUENT TAXES AND TRANSFER ENTLED"
April 5 1990
Charles R. Kephart
Auditor, Anoka County

I HEREBY CERTIFY THAT THE TAXES PAYABLE IN 1990 ON THE LANDS DESCRIBED WITHIN AND PAID
Donald C. Bailey
Anoka County Treasurer
J. Henry - deputy



PART OF LOT 34

CREEK VILLAS NORTH 2ND

South line of East Half, Northeast Quarter, Southwest Quarter, Northwest Quarter
Also South line of Lot 33