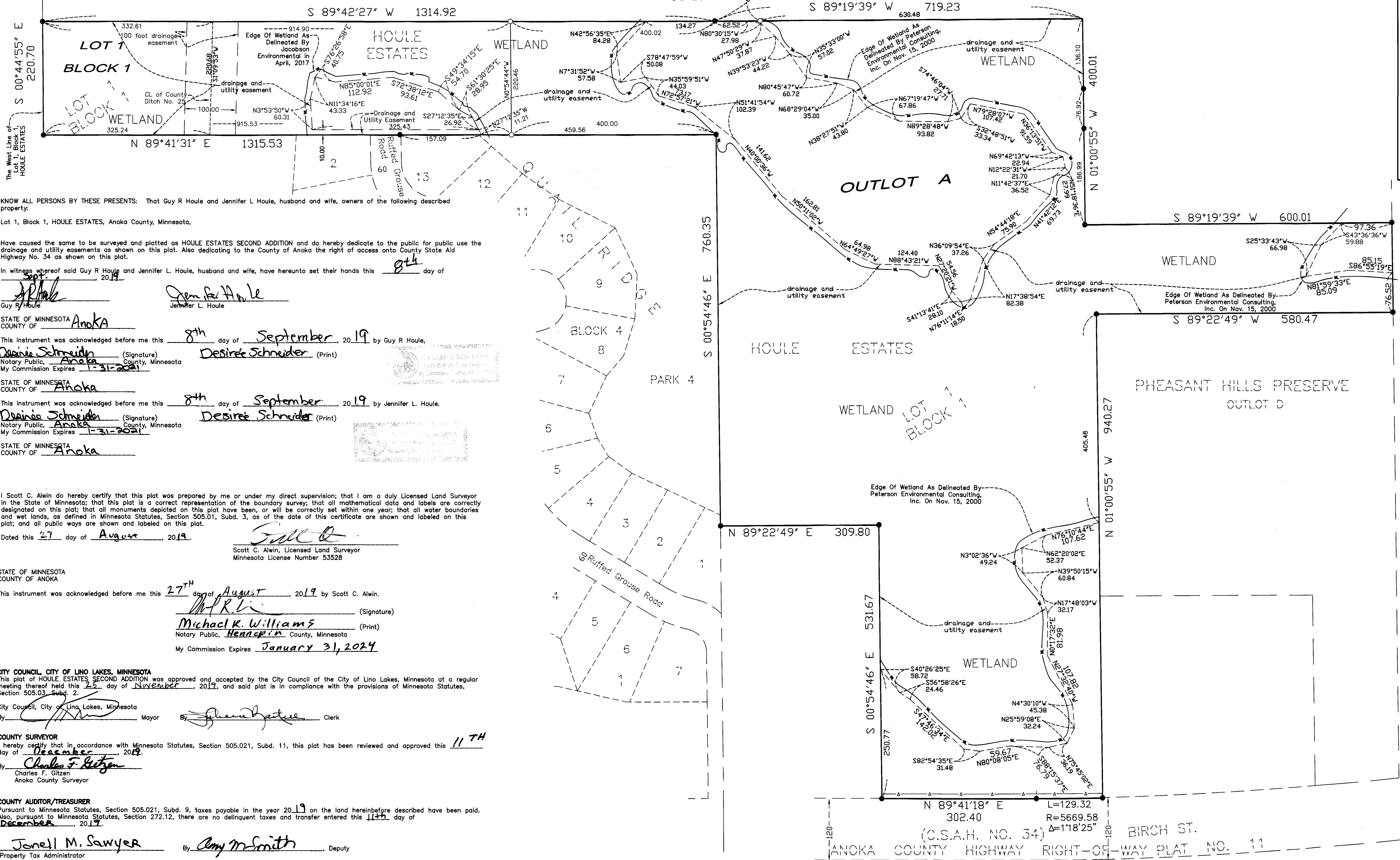
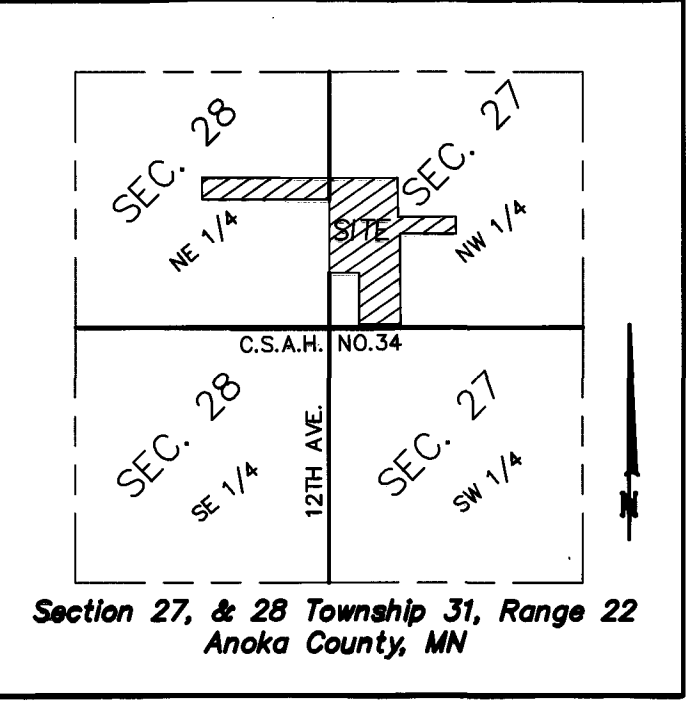


# HOULE ESTATES SECOND ADDITION

City of Lino Lakes  
County of Anoka  
Sections 27 & 28,  
Twp. 31, Rng. 22

PHEASANT HILLS PRESERVE

VICINITY MAP  
Not to Scale



KNOW ALL PERSONS BY THESE PRESENTS: That Guy R Houle and Jennifer L Houle, husband and wife, owners of the following described property:  
Lot 1, Block 1, HOULE ESTATES, Anoka County, Minnesota,

Have caused the same to be surveyed and platted as HOULE ESTATES SECOND ADDITION and do hereby dedicate to the public for public use the drainage and utility easements as shown on this plat. Also dedicating to the County of Anoka the right of access onto County State Aid Highway No. 34 as shown on this plat.

In witness whereof said Guy R Houle and Jennifer L. Houle, husband and wife, have hereunto set their hands this 8th day of Sept, 2019  
*Guy R Houle*      *Jennifer L Houle*

STATE OF MINNESOTA  
COUNTY OF Anoka  
This instrument was acknowledged before me this 8th day of September, 2019 by Guy R Houle,  
*Deanna Schneider* (Signature)      *Deanna Schneider* (Print)  
Notary Public, Anoka County, Minnesota  
My Commission Expires 1-31-2021

STATE OF MINNESOTA  
COUNTY OF Anoka  
This instrument was acknowledged before me this 8th day of September, 2019 by Jennifer L Houle,  
*Deanna Schneider* (Signature)      *Deanna Schneider* (Print)  
Notary Public, Anoka County, Minnesota  
My Commission Expires 1-31-2021

STATE OF MINNESOTA  
COUNTY OF Anoka  
I, Scott C. Alwin do hereby certify that this plat was prepared by me or under my direct supervision; that I am a duly Licensed Land Surveyor in the State of Minnesota; that this plat is a correct representation of the boundary survey; that all mathematical data and labels are correctly designated on this plat; that all monuments depicted on this plat have been, or will be correctly set within one year; that all water boundaries and wet lands, as defined in Minnesota Statutes, Section 505.01, Subd. 3, as of the date of this certificate are shown and labeled on this plat; and all public ways are shown and labeled on this plat.

Dated this 27 day of August, 2019.  
*Scott C. Alwin*  
Scott C. Alwin, Licensed Land Surveyor  
Minnesota License Number 53528

STATE OF MINNESOTA  
COUNTY OF ANOKA  
This instrument was acknowledged before me this 27th day of August, 2019 by Scott C. Alwin.  
*Michael R. Williams* (Signature)  
Notary Public, Hennepin County, Minnesota  
My Commission Expires January 31, 2024

CITY COUNCIL, CITY OF LINO LAKES, MINNESOTA  
This plat of HOULE ESTATES SECOND ADDITION was approved and accepted by the City Council of the City of Lino Lakes, Minnesota at a regular meeting thereof held this 2 day of November, 2019, and said plat is in compliance with the provisions of Minnesota Statutes, Section 505.03, Subd. 2.

City Council, City of Lino Lakes, Minnesota  
By *[Signature]* Mayor      By *[Signature]* Clerk

COUNTY SURVEYOR  
I hereby certify that in accordance with Minnesota Statutes, Section 505.021, Subd. 11, this plat has been reviewed and approved this 11th day of December, 2019.  
By *Charles F. Gitzel*  
Charles F. Gitzel  
Anoka County Surveyor

COUNTY AUDITOR/TREASURER  
Pursuant to Minnesota Statutes, Section 505.021, Subd. 9, taxes payable in the year 2019 on the land hereinbefore described have been paid. Also, pursuant to Minnesota Statutes, Section 272.12, there are no delinquent taxes and transfer entered this 11th day of December, 2019.

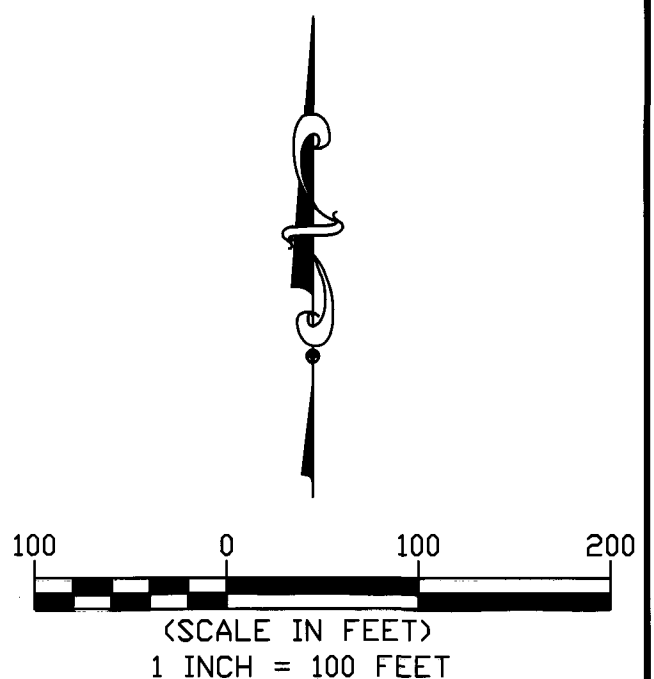
By *Jonell M. Sawyer*      By *Amy McSmith*  
Property Tax Administrator      Deputy

COUNTY RECORDER/REGISTRAR OF TITLES  
County of Anoka, State of Minnesota  
I hereby certify that this plat of HOULE ESTATES SECOND ADDITION was filed in the office of the County Recorder/Registrar of Titles for public record on this 11th day of December, 2019, at 2:42 o'clock P.M. and was duly recorded as Document Number 2245743.004.

By *Jonell M. Sawyer*      By *Amy McSmith*  
County Recorder/Registrar of Titles      Deputy

### LEGEND

- DENOTES 1/2 INCH BY 14 INCH IRON PIPE MONUMENT MARKED BY LICENSE NO. 53528, THAT WILL BE SET WITHIN ONE YEAR OF THE RECORDING OF THIS PLAT.
- DENOTES FOUND 1/2 IRON PIPE MONUMENT
- DENOTES WETLAND BOUNDARY
- DENOTES RIGHT OF ACCESS DEDICATED TO ANOKA COUNTY



\$56.00

