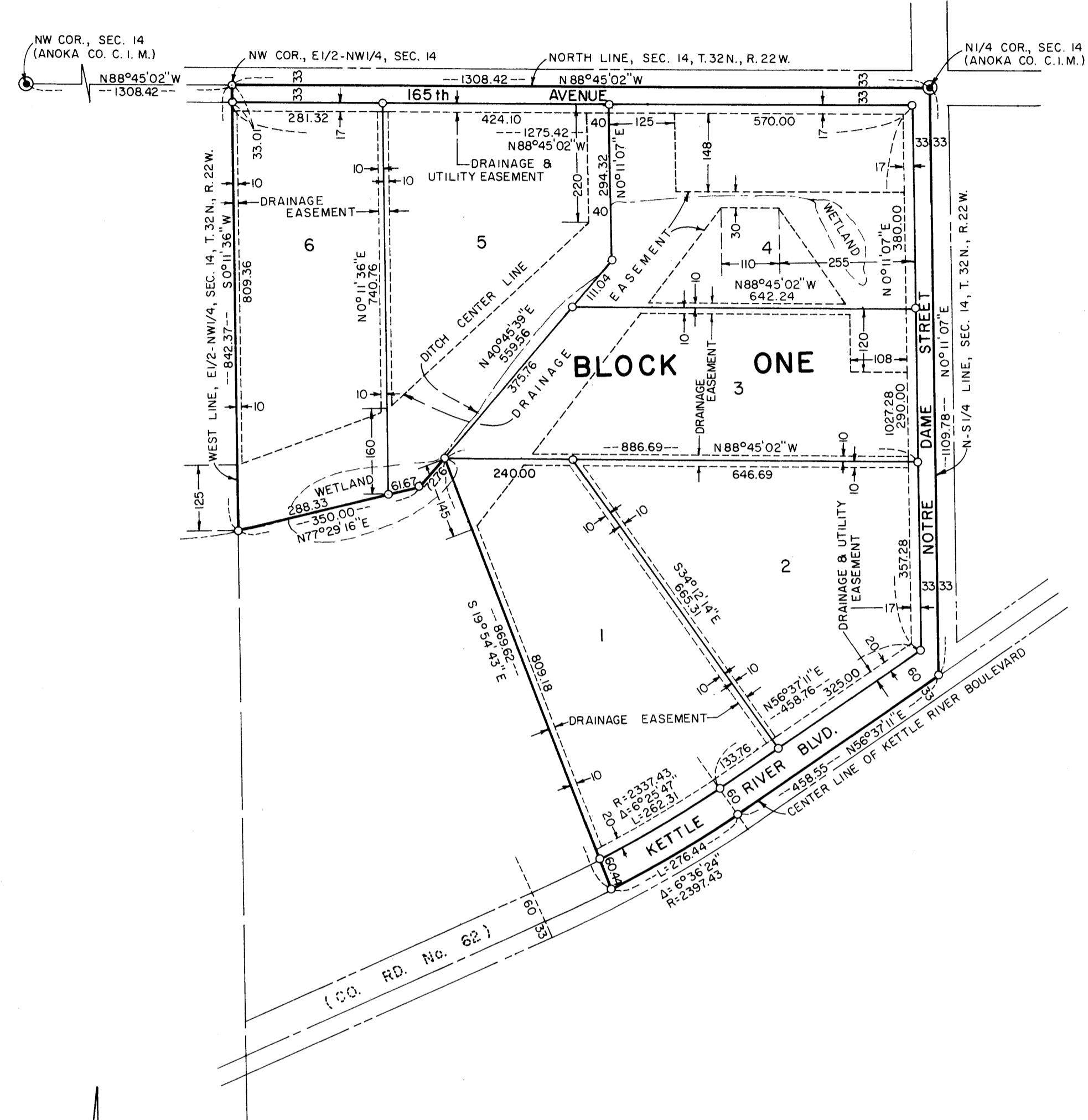
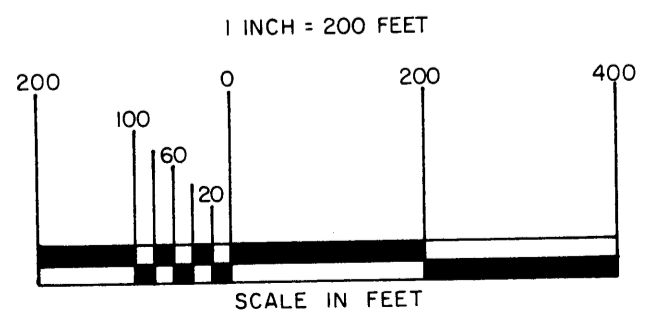
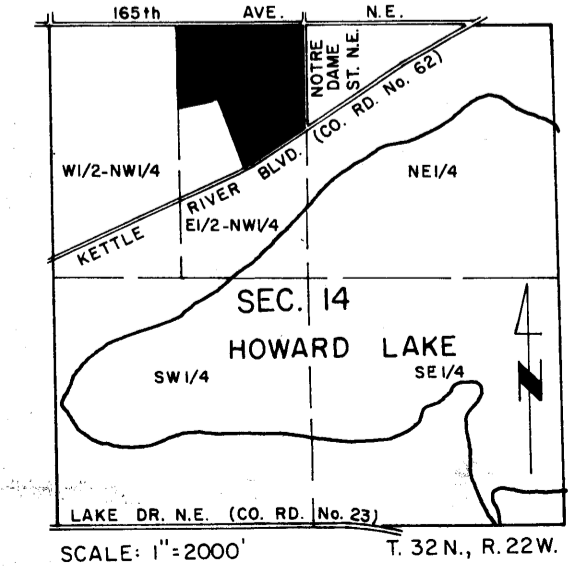


# HOWARD LAKE ADDITION



O INDICATES IRON MONUMENT SET  
 FOR THE PURPOSES OF THIS PLAT THE NORTH  
 LINE OF SECTION 14, T. 32N., R. 22W., HAS A  
 BEARING OF N 88° 45' 02" W

HULT & ASSOCIATES, INC.  
 LAND SURVEYORS



THIS IS TO CERTIFY that Howard Lake Development General Partnership, a Minnesota partnership, fee owner of the following described property situated in Columbus Township, Anoka County, Minnesota:

That part of the East Half of the Northwest Quarter of Section 14, Township 32 North, Range 22 West, Anoka County, Minnesota, described as follows:  
 Beginning at the northwest corner of said East Half of the Northwest Quarter; thence South 0 degrees 11 minutes 36 seconds West, assumed bearing along the west line of said East Half of the Northwest Quarter, 842.37 feet; thence North 77 degrees 29 minutes 16 seconds East, 350.00 feet; thence North 40 degrees 45 minutes 39 seconds East, 72.76 feet; thence South 19 degrees 54 minutes 43 seconds East, to the center line of Kettle River Boulevard (also known as County Road No. 62); thence northeasterly, along said center line, to the north-south quarter line of said Section 14; thence northerly, along said north-south quarter line, to the north quarter corner of said Section 14; thence westerly, along the north line of said Section 14 to the point of beginning.

have caused the same to be surveyed and platted as HOWARD LAKE ADDITION and do hereby dedicate to the public for public use forever Kettle River Boulevard (also known as County Road No. 62), Notre Dame Street and 165th Avenue as shown on the plat, and drainage and utility easements as shown on the plat.

IN WITNESS WHEREOF said Howard Lake Development General Partnership, a Minnesota partnership, have hereunto set their hands this 29<sup>th</sup> day of January, 19 87

By: Rita J. Tetrault Howard Lake Development General Partnership  
 Rita J. Tetrault, Partner  
 And by: Angelica M. Solem  
 Angelica M. Solem, Partner

STATE OF MINNESOTA ) The foregoing instrument was acknowledged before me this 29<sup>th</sup> day of January  
 COUNTY OF Anoka ) 19 87, by Rita J. Tetrault, a partner and by Angelica M. Solem, a partner, on behalf of Howard Lake Development General Partnership, a Minnesota partnership.

Mary A. Hoyt Mary A. Hoyt  
 Notary Public, Anoka County, Minnesota  
 My Commission Expires August 4, 1991

I hereby certify that I have surveyed and platted the property described in the dedication of this plat as HOWARD LAKE ADDITION; that this plat is a correct representation of said survey; that all distances are correctly shown on the plat; that all monuments have been correctly placed in the ground as shown, that the outside boundary lines are correctly designated on the plat; and that there are no wetlands, easements, or public highways to be designated on said plat other than as shown thereon.

Don C. Hult  
 Don C. Hult, Minnesota Registered Land Surveyor No. 6617

STATE OF MINNESOTA ) This instrument was acknowledged before me, a Notary Public, this 8<sup>th</sup> day of DECEMBER, 19 87.  
 COUNTY OF CHISAGO ) by Don C. Hult, Minnesota Registered Land Surveyor.

Sharon H. Autey Sharon H. Autey  
 Notary Public, WASHINGTON County, Minnesota  
 My Commission Expires NOVEMBER 9, 1992

This plat of HOWARD LAKE ADDITION was approved by the Town Board of the Township of Columbus at a meeting held this 28<sup>th</sup> day of January, 19 87. If applicable, the written comments and recommendations of the Commissioner of Transportation and the County Highway Engineer have been received by the city or township or the prescribed 30 day period has elapsed without receipt of such comments and recommendations, as provided by Minnesota Statutes, Section 505.03, Subdivision 2.

Attest: Barbara R. Thasteller  
 Clerk

Signed: Roland W. Anderson  
 Roland W. Anderson, Anoka County Surveyor

This plat was approved and accepted by the Board of County Commissioners of Anoka County, State of Minnesota, at a meeting held this 10<sup>th</sup> day of February, 19 87.

Dan Ehart  
 Chairman

John Jay M. Lindner  
 County Administrator

Checked and approved this 30<sup>th</sup> day of January, 19 87.

By: Roland W. Anderson  
 Roland W. Anderson, Anoka County Surveyor

Recommended for approval this 30<sup>th</sup> day of January, 19 87.

By: Paul K. Lund  
 Anoka County Highway Engineer

This plat was approved as to form and execution on this 9<sup>th</sup> day of March, 19 87.

By: Anthony C. Falumbo, Assistant  
 Anoka County Attorney

NO DELINQUENT TAXES  
 AND TRANSFER ENTRIES  
February 10th 1987  
Charles R. LeFebvre  
 Auditor, Anoka County  
 By: Camela Vekulsky  
 Deputy

I HEREBY CERTIFY THAT THE  
 PAYABLE IN THE YEAR 87 OF THE  
 LANDS DESCRIBED WITHIN THIS PLAT  
Donall E. Baird  
 Anoka County Treasurer  
J. Henry - Deputy

"NO DELINQUENT TAXES  
 AND TRANSFER ENTRIES"  
March 10th 1987  
Charles R. LeFebvre  
 Auditor, Anoka County  
 By: Camela Vekulsky  
 Deputy

749263  
 OFFICE OF COUNTY RECORDER  
 STATE OF MINNESOTA, COUNTY OF ANOKA  
 I hereby certify that the within instru-  
 ment was filed in this office for record  
 on the MAR 10, 1987 A.D., 19  
12 o'clock PM and was duly recorded  
 in book 378 PLATS 27  
Red J. Omahl  
 Recorder  
 By: G. Diana Swanson  
 Deputy