

(ORIGINAL)

HUGHES ADDITION

ANOKA COUNTY, MINNESOTA

136190

OFFICE OF REGISTER OF DEEDS,
STATE OF MINNESOTA, COUNTY OF ANOKA
I hereby certify that the within instru-
ment was filed in this office for record on
the 4th day of SEP, 1950 A.D. 1950
at 4 o'clock P.M., and was duly recorded
in Book 270 Plate 320 page 320

Erno Brandell
Register of Deeds
By Mary Tom Craig, Deputy

CARTWRIGHT & OLSON
LAND SURVEYORS

KNOW ALL MEN BY THESE PRESENTS: That we, Ervin F. Hughes and Minnie Hughes, his wife, owners and proprietors of the following described property situate in the County of Anoka, State of Minnesota described as follows to-wit: That part of Lot 11, Auditor's Subdivision Number 83, Anoka County, Minnesota, according to the recorded plat thereof on file and of record in the Office of the Register of Deeds, described as follows: Commencing at a point on the South line of said Lot 11 distant 9 rods West from the Southeast corner thereof; thence North parallel with the East line thereof 9 rods; thence East parallel with the South line thereof 9 rods to the East line thereof; thence North along the East line of said Lot 11, 181.5 feet; thence West parallel with South line of said Lot 11, 448.5 feet; thence South parallel with the East line of said Lot 11, 330 feet to the South line thereof; thence East along the South line thereof 300 feet to the point of beginning; have caused the same to be surveyed and platted as "HUGHES ADDITION," and do hereby donate and dedicate to the public for public use forever the Road and Avenues as shown on the annexed plat In witness whereof we have set our hands and seals on this 4th day of Aug, 1950 A.D.

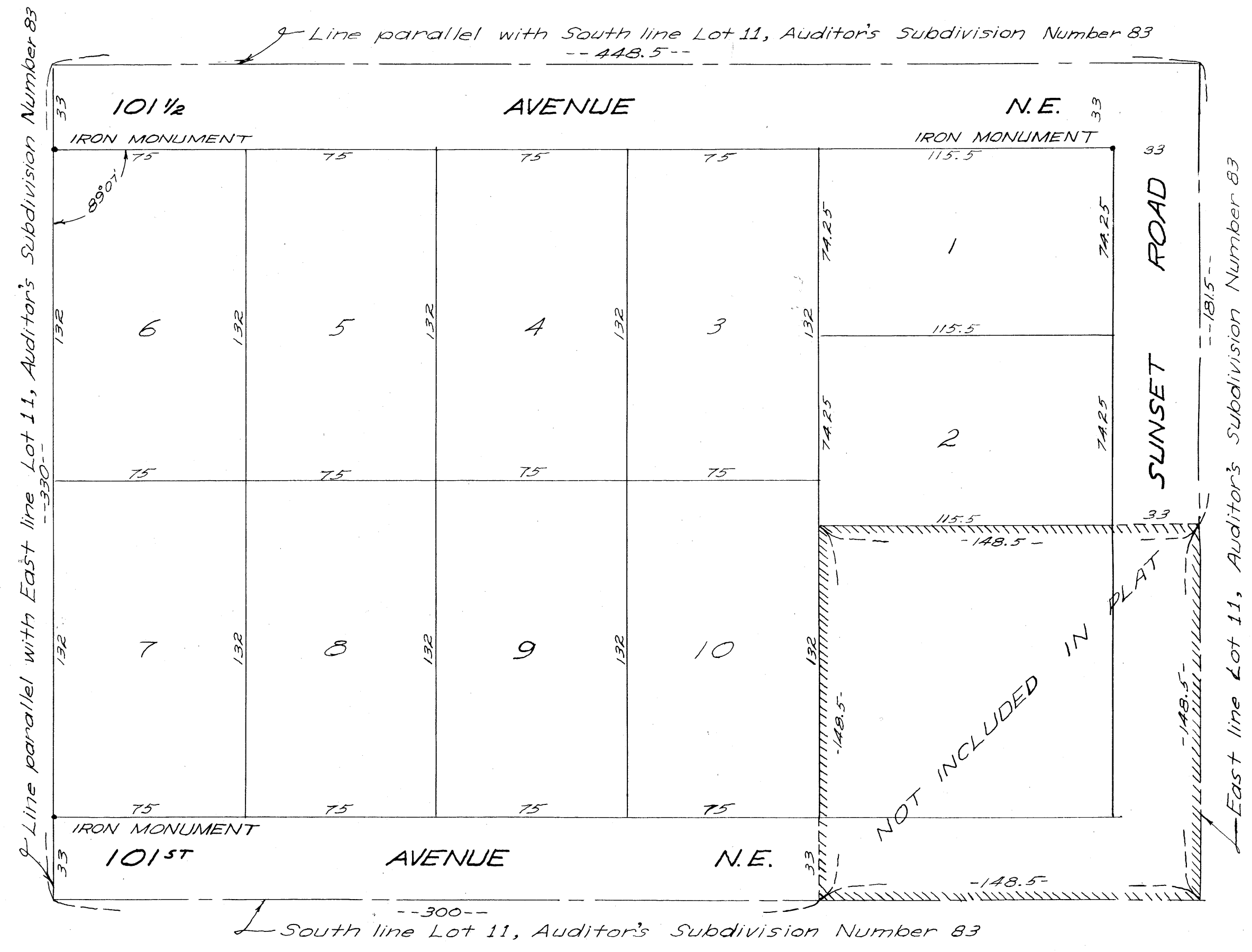
In the presence of
Erno Brandell As to Ervin F. Hughes
C. M. Dickey

Signed
Ervin F. Hughes

Erno Brandell As to Minnie Hughes
C. M. Dickey

Minnie Hughes

Scale: 1" = 40'



Line parallel with East line Lot 11, Auditor's Subdivision Number 83
Line parallel with South line Lot 11, Auditor's Subdivision Number 83
East line Lot 11, Auditor's Subdivision Number 83

STATE OF MINNESOTA } S.S.
COUNTY OF HENNEPIN }

On this 4th day of Aug, 1950 A.D. before me, a Notary Public within and for said County and State, personally appeared Ervin F. Hughes and Minnie Hughes, his wife, to me personally known to be the persons in and who executed the foregoing instrument and they affirm and acknowledge that they executed the same as their own free act and deed.

Clara M. Dickey
Notary Public, Hennepin County, Minnesota
My Commission Expires April 21, 1952

I hereby certify that I have surveyed and platted the land described in the dedication on this sheet as "HUGHES ADDITION," Anoka County, Minnesota; that this plat is a correct representation of said survey, that all distances are correctly shown on said plat in figures denoting feet and decimals of a foot; that the monuments for guidance of future surveys have been correctly placed in the ground as shown on said plat; that the topography of the land is correctly shown on said plat; that the outside boundaries of the land are correctly designated on said plat; and that there are no wet lands or public highways to be designated on said plat other than are shown thereon.

Erno Brandell
Registered Land Surveyor, Number 1983

STATE OF MINNESOTA } S.S.
COUNTY OF HENNEPIN }

Above certificate subscribed and sworn to before me, a Notary Public in and for said County and State on this 4th day of Aug, 1950 A.D.

Clara M. Dickey
Notary Public, Hennepin County, Minnesota
My Commission Expires April 21, 1952

This plat was approved and accepted by the Honorable Board of County Commissioners of the County of Anoka, State of Minnesota, at a regular meeting held this 7th day of August A.D. 1950.

H. S. Stack
Chairman, Board of County Commissioners
E. U. Carlson
County Auditor, Anoka County, Minnesota
By G. Bremer Deputy

This is to certify that the above plat of "HUGHES ADDITION" was approved by the Planning and Zoning Commission and by the Town Board of the Township of Blaine at a regular meeting held this 7th day of Aug, 1950 A.D.

Carl Otto
Chairman, Town of Blaine
E. E. Gottwaldt
Clerk, Town of Blaine

This plat was approved as to form and execution on this 26th day of Aug, 1950 A.D.

TAXES PAID
This lot was taxed in 1950
E. U. Carlson
Auditor, Anoka County, Minn.
G. Bremer Deputy

Walter D. Bowers
County Attorney, Anoka County, Minnesota
hereby certify that taxes for the year 1949
on the lands described herein are paid
Walter D. Bowers
County Attorney, Anoka County, Minnesota