

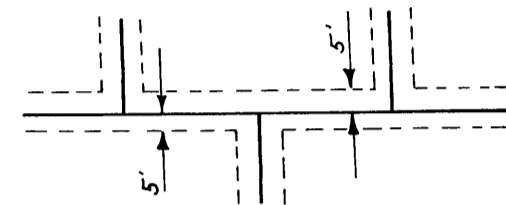
Scale 1"=100'



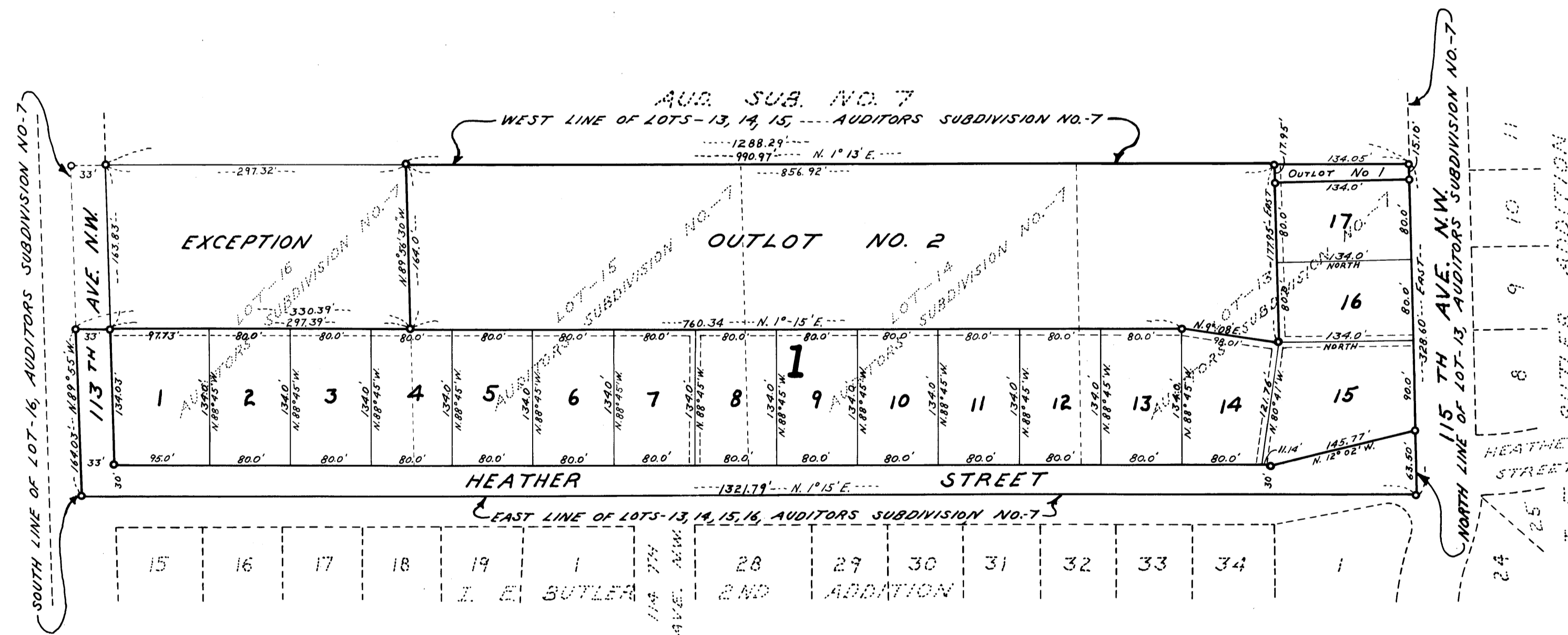
I. E. BUTLER 3RD ADDITION

ANOKA COUNTY, MINNESOTA

DASHED LINES DENOTE DRAINAGE & UTILITY EASEMENTS AND ARE FIVE FEET IN WIDTH ON EACH SIDE OF LOT LINES.



"O" DENOTES IRON MONUMENT BEARINGS SHOWN ARE ASSUMED



Know all men by these presents: That George R. Butler Construction Co., a Minnesota corporation, as owner and proprietor of the following described property situated in the County of Anoka, State of Minnesota, to wit: Lots 13, 14, 15 and the East 164 feet of Lot 16 as measured at right angle's to the East line of said Lot 16, Auditor's Subdivision No. 7, according to the plat of record: Have caused the same to be surveyed and platted as I. E. BUTLER 3RD ADDITION; and do hereby donate and dedicate to the public for the public use forever the avenue, street and easements for utility and drainage purposes as shown on the annexed plat. In witness whereof, said George R. Butler Construction Co. has caused these presents to be signed by its proper officers and its corporate seal to be hereunto affixed this 1st day of October A.D. 1962.

In Presence Of

Stanley P. Blum
Miss M. Smith

Signed George R. Butler Construction Co.

George R. Butler its President
Mildred B. Butler its Secretary

State of Minnesota
County of Hennepin On this 1st day of October A.D. 1962, before me, a Notary Public, within and for said County and State, personally appeared George R. Butler and Mildred B. Butler, to me personally known, who being by me, each duly sworn, did say that they are the President and Secretary, respectively, of George R. Butler Construction Co., the corporation named in the foregoing instrument; that the seal affixed to said instrument is the corporate seal of said corporation; that said instrument was signed and sealed in behalf of said corporation by authority of its board of directors and said George R. Butler and Mildred B. Butler acknowledge said instrument to be the free act and deed of said corporation.

Stanley P. Blum
Notary Public, Hennepin County, Minnesota
My Commission Expires July 1, 1963

I hereby certify that I have surveyed and platted the property described on this plat as I. E. BUTLER 3RD ADDITION; that this plat is a correct representation of said survey; that all distances are correctly shown on said plat in feet and decimals of a foot; that the monuments for the guidance of future surveys have been correctly placed in the ground as shown on said plat; that the outside boundary lines are correctly designated on said plat; and that there are no wet lands or public highways to be designated on said plat other than as shown thereon.

Calvin H. Hedlund
Calvin H. Hedlund, Surveyor
Minnesota Registration No. 5942

State of Minnesota
County of Hennepin The above certificate was subscribed and sworn to before me on this 1st day of October A.D. 1962.

Stanley P. Blum
Notary Public, Hennepin County, Minnesota
My Commission Expires July 1, 1963

We hereby certify that the Planning Commission of the City of Coon Rapids, Anoka County, Minnesota, duly accepted and approved the annexed plat of I. E. BUTLER 3RD ADDITION of a regular meeting thereof held this 27th day of September A.D. 1962.

Hubert G. Pease Chairman W. J. M. Lean Jr. Secretary

We hereby certify that the City Council of Coon Rapids, Anoka County, Minnesota, duly accepted and approved the annexed plat of I. E. BUTLER 3RD ADDITION of a regular meeting thereof held this 3rd day of October A.D. 1962.

Joseph A. Craig Mayor Margaret Jensen Clerk

Checked and approved this 13th day of November A.D. 1962. Robert W. Anderson
Anoka County Surveyor

241176
OFFICE OF REGISTER OF DEEDS
STATE OF MINNESOTA, COUNTY OF ANOKA
I hereby certify that the within instrument was filed for record in the County of Anoka, Minnesota, on this 13th day of November A.D. 1962, at 1:00 P.M. and was duly recorded in Book 134 of Plate 4.
Gertrude Skinner
By Margaret P. Russell Deputy

I HEREBY CERTIFY THAT THE YEAR 1961
IN THE COUNTY OF ANOKA, MINNESOTA
Robert J. Peterson
By L. J. J. J. J. Deputy

TAXES PAID
Nov. 13 1962
Kenneth W. Campbell
John E. Sage