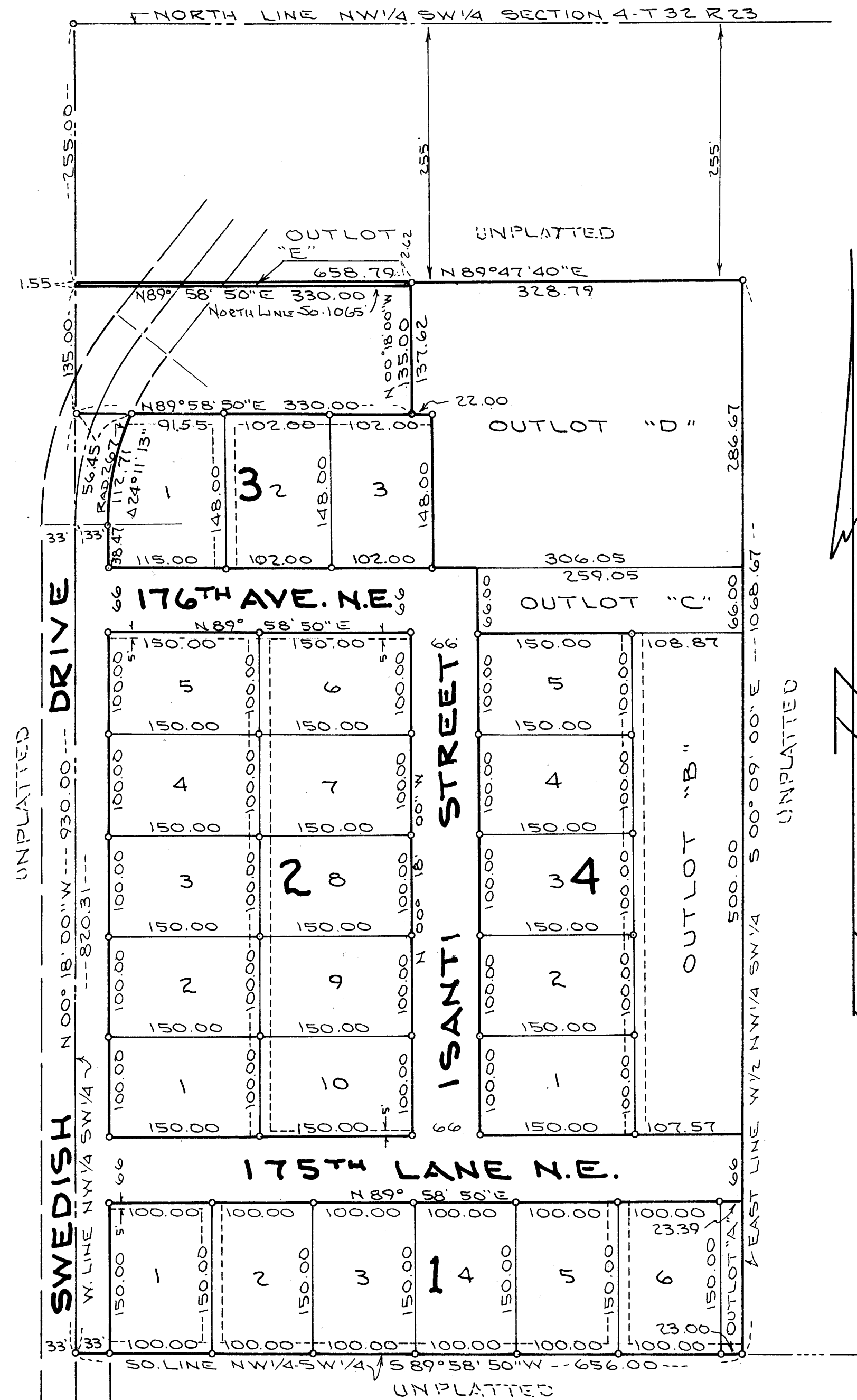


IDLEWOOD 3RD ADDITION

TOWNSHIP OF HAM LAKE ~ ANOKA CO. MINN.



NOTES
 SCALE 1" = 100'
 ○ INDICATES IRON MONUMENT
 BEARINGS ARE ASSUMED
 DRAINAGE & UTILITY EASEMENTS 10' FROM LOT
 LINE EXCEPT AS SHOWN
 EASEMENTS SHOWN THUS -----

"NO DELINQUENT TAXES"
 June 18 1971
[Signature]
 Deputy

KNOW ALL MEN BY THESE PRESENTS: That Swedish Builders, Inc., a Minnesota corporation, owners and proprietors of the following described property situated in the County of Anoka, State of Minnesota to wit: The West half (W 1/2) of the Northwest quarter (NW 1/4) of the South-west quarter (SW 1/4) of Section 32, Range 23, except the north 255.0 feet and except the west 330.0 feet of the north 135.0 feet of the south 1065.0 feet thereof. Have caused the same to be surveyed and platted as IDLEWOOD 3rd ADDITION, and do hereby donate and dedicate to the public for public use forever the drives, lane, avenue, and easements for drainage and utility purposes as shown on the annexed plat.

In witness whereof Swedish Builders, Inc., a Minnesota corporation, has caused these presents to be signed by its proper officers and its corporate seal to be hereunto affixed this 19th day of April, A.D. 1971

In presence of
Wendy Reagan
 Witness
Jane M. Johnson
 Witness

Swedish Builders, Inc.
John M. Hansen
 John M. Hansen - President
Gordon L. Jensen
 Gordon L. Jensen - Secretary

STATE OF MINNESOTA } ss
 COUNTY OF ANOKA }
 On this 19th day of April, A. D. 1971, before me, a Notary Public, within and for said County and State personally appeared John M. Hansen and Gordon L. Jensen, to me known, who each being duly sworn, did say that they are respectively the President and Secretary of Swedish Builders, Inc., the corporation named in the foregoing instrument, that the seal affixed is the corporate seal of said corporation, that said instrument was signed and sealed in behalf of said corporation by authority of its Board of Directors, and said John M. Hansen and Gordon L. Jensen acknowledge said instrument to be the free act and deed of said corporation.

Jane M. Johnson
 Notary Public, Anoka County, Minnesota
 My commission expires Nov. 17, 1976

I hereby certify that I have surveyed and platted the property described on this plat as Idlewood 3rd Addition; that this plat is a correct representation of said survey; that all distances are correctly shown on the plat; that all monuments have been correctly placed in the ground as shown; that the outside boundary lines are correctly designated on the plat; and that there are no wet lands or public highways to be designated on said plat other than as shown.

James L. Kurth
 James L. Kurth - Land Surveyor, Minnesota Registration No. 5332

STATE OF MINNESOTA } ss
 COUNTY OF ANOKA }
 Above certificate subscribed and sworn to before me, a Notary Public this 17th day of April, A.D. 1971

Jeanne M. Kurth
 Jeanne M. Kurth, Notary Public, Anoka County, Minnesota
 My commission expires March 13, 1977

Annexed plat of IDLEWOOD 3rd ADDITION was approved by the Town Board of the Township of Ham Lake at a regular meeting thereof held this 19th day of April, A. D. 1971

Cordeil G. Wellman
 Chairman
Donald R. Keenan
 Clerk

This plat was approved and accepted by the Board of County Commissioners of the County of Anoka, State of Minnesota, at a regular meeting thereof held this 8th day of June, A. D. 1971

Cordeil G. Wellman
 Chairman
Charles R. Lefebvre
 County Auditor

Recommended for approval this 8th day of June, A.D. 1971

E. J. Lundheim
 County Highway Engineer, Anoka County, Minnesota

This plat was approved as to form and execution this 17th day of June, A.D. 1971

Robert Johnson
 County Attorney, Anoka County, Minnesota

Checked and approved this 8th day of June, A.D. 1971

Roland W. Anderson
 County Surveyor, Anoka County, Minnesota

351064
 OFFICE OF REGISTER OF DEEDS
 STATE OF MINNESOTA, COUNTY OF ANOKA } ss
 I hereby certify that the within instrument was filed in this office for record on the 22nd day of June, 1971, A.D., 1971, at 5 o'clock P.M., and was duly recorded in book 2 of Plate page 3
Theo J. Orndahl
 Register of Deeds
Margaret Pierce
 Deputy