

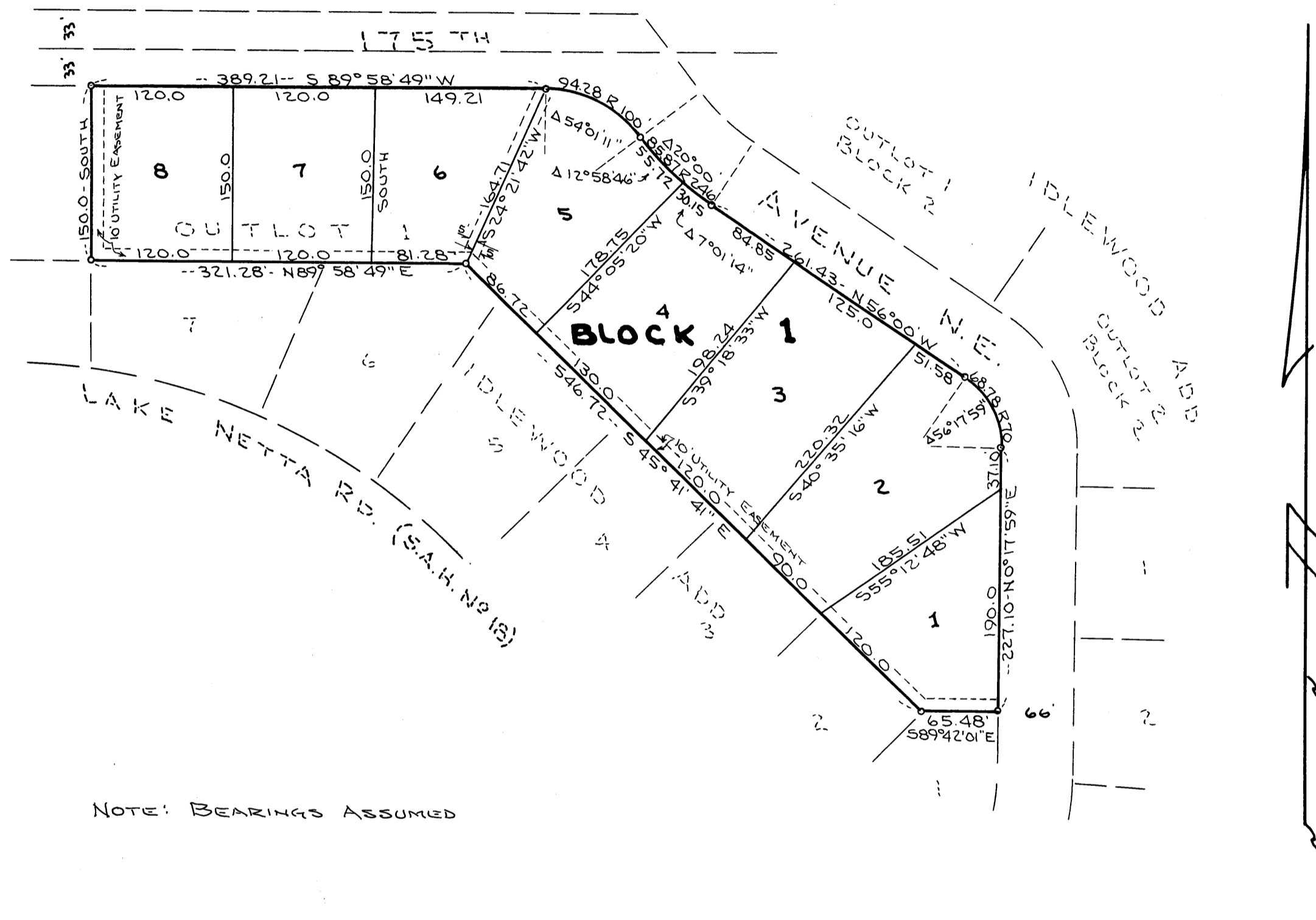
# IDLEWOOD ADDITION NO. 2

## TOWNSHIP OF HAM LAKE ~ ANOKA CO. MINN.

SCALE 1" = 100'

JAMES L. KURTH  
LAND SURVEYOR

o INDICATES IRON MONUMENT



NOTE: BEARINGS ASSUMED

KNOW ALL MEN BY THESE PRESENTS: That we, Joseph E. Wargo and Edith P. Wargo, husband and wife, owners and proprietors of the following described property situated in the County of Anoka, State of Minnesota to wit: Outlot One (1), Block One (1), Idlewood Addition, according to the plat thereof on file and of record in the office of the Register of Deeds in and for said Anoka County, Minnesota, have caused the same to be surveyed and platted as IDLEWOOD ADDITION NO. 2. Subject to utility easements as shown on the annexed plat.

In witness whereof we have hereunto set our hands and seals this 19 day of May A.D. 1970

IN THE PRESENCE OF

SIGNED

Joanne M. Ina  
Peter Barne

Joseph E. Wargo  
Joseph E. Wargo  
Edith P. Wargo  
Edith P. Wargo

STATE OF MINNESOTA )  
COUNTY OF ANOKA )

On this 19 day of May A.D. 1970, before me, a Notary Public within and for said County and State, personally appeared Joseph E. Wargo and Edith P. Wargo, husband and wife, to me known to be the persons described in and who executed the foregoing instrument and they affirm and acknowledge that they executed the same as their own free act and deed.

Peter Barne  
Notary Public, Anoka County, Minnesota  
My commission expires \_\_\_\_\_

PETER BARNE  
Notary Public, Anoka County, Minn.  
Commission Expires Feb. 5, 1972

I hereby certify that I have surveyed and platted the property described on this plat as IDLEWOOD ADDITION NO. 2; that this plat is a correct representation of said survey; that all distances are correctly shown on the plat in feet and decimals of a foot; that the monuments for the guidance of future surveys have been correctly placed in the ground as shown on the plat; that the outside boundary lines are correctly designated on the plat; and there are no wet lands or public highways to be designated on said plat other than as shown.

James L. Kurth  
Minnesota Registered Land Surveyor No. 5332

STATE OF MINNESOTA )  
COUNTY OF ANOKA )

Above certificate subscribed and sworn to before me, a Notary Public within and for said County and State this 4<sup>th</sup> day of May A.D. 1970

Jeanne M. Kurth  
Notary Public Anoka County, Minnesota  
My commission expires March 13, 1977  
JEANNE M. KURTH  
Notary Public, Anoka County, Minn.  
My Commission Expires Mar. 13, 1977

Recommended for approval this 16<sup>th</sup> day of June A.D. 1970

E. J. Lundheim  
County Highway Engineer, Anoka County Minnesota

Annexed plat of IDLEWOOD ADDITION NO. 2 was approved by the Town Board of the Township of Ham Lake at a regular meeting thereof held this 16 day of June A.D. 1970

Wilbur J. Melham  
Chairman  
Donald R. Hemman  
Clerk

This plat was approved as to form and execution this 6<sup>th</sup> day of Aug. A.D. 1970

Robert Capshaw  
County Attorney, Anoka County, Minnesota

Checked and approved this 16<sup>th</sup> day of June A.D. 1970

Roland W. Anderson  
County Surveyor, Anoka County, Minnesota

This plat was approved and accepted by the Board of County Commissioners of the County of Anoka, State of Minnesota, at a regular meeting thereof held this 16<sup>th</sup> day of June A.D. 1970

L. W. Swagquist  
Chairman  
Kenneth W. Campbell  
County Auditor  
By: Abdon W. Harway  
Deputy Auditor

337908

OFFICE OF REGISTER OF DEEDS  
STATE OF MINNESOTA, COUNTY OF ANOKA

I hereby certify that the within instrument was filed in this office for record on the 6 day of AUG 6 1970 at 4 o'clock P.M. and was duly recorded in book 6 of Plats page 5

Red J. Ondahl  
Register of Deeds  
By A. Diana Swanson  
Deputy

TAXES PAID

August 6, 1970  
Donald W. Campbell  
Auditor, Anoka County

I HEREBY CERTIFY THAT THE TAXES PAYABLE IN THE YEAR 1970 ON THE LANDS DESCRIBED WITHIN ARE PAID  
Robert A. Peterson  
Anoka County Treasurer