

INDEPENDENT SHORES

CITY OF HAM LAKE COUNTY OF ANOKA

KNOW ALL PERSONS BY THESE PRESENTS: That Independent Realty, Inc., a Minnesota corporation, owner and proprietor, and Norwest Bank Minnesota, N.A., a national association, mortgagee of the following described property situated in the County of Anoka, State of Minnesota, to-wit:

Government

All of Lot 2, in Section 1, Township 32, Range 23, excepting the part thereof included in the plat of Oakleaf Shores, and excepting the part thereof, if any, lying between said plat and the shore of Coon Lake and westerly of the northeasterly line of Lot 17 of said plat extended northwesterly to the shore of Coon Lake, according to the United States Government Survey thereof.

Have caused the same to be surveyed and platted as INDEPENDENT SHORES and do hereby donate and dedicate to the public for public use forever the Street as shown on the plat. Also dedicating the drainage and/or utility easements as shown on the plat. In witness whereof said Independent Realty, Inc. has caused these presents to be signed by its proper officer this 13th day of OCTOBER, 19 88. Also in witness whereof said Norwest Bank Minnesota, N.A. has caused these presents to be signed by its proper officers this 13th day of OCTOBER, 19 88.

INDEPENDENT REALTY, INC.

Michael E. Kolodjski, President
Michael E. Kolodjski

STATE OF MINNESOTA) The foregoing instrument was acknowledged before me
COUNTY OF HENNEPIN) this 13th day of OCTOBER, 19 88, by
Michael E. Kolodjski, president of Independent Realty, Inc., a Minnesota corporation, on behalf of the corporation.

Sharon S. Chovan
Notary Public, Hennepin County, Minnesota
My Commission expires 6-7-94

NORWEST BANK MINNESOTA, N.A.

Guana Matkenen, Title Asst Vice President
Guana A. Jauer, Title Vice President

STATE OF MINNESOTA) The foregoing instrument was acknowledged before me
COUNTY OF HENNEPIN) this 13th day of OCTOBER, 19 88, by
Guana Matkenen, Asst Vice President
Guana A. Jauer, Vice President
of Norwest Bank Minnesota, N.A. a national association, on behalf of the association.

Sharon S. Chovan
Notary Public, Hennepin County, Minnesota
My Commission expires 3-1-94

I hereby certify that I have surveyed and platted the land described in the dedication on this plat as INDEPENDENT SHORES; that the plat is a correct representation of said survey; that all distances are correctly shown on said plat in feet and hundredths of a foot; that the monuments have been correctly placed in the ground as shown; that the outside boundaries are correctly designated on said plat; and that there are no wet lands or public highways to be designated on said plat other than as shown thereon.

Jeffrey N. Caine
Jeffrey N. Caine, Registered Land Surveyor
Minnesota Registration No. 12251

STATE OF MINNESOTA) The surveyors certificate was acknowledged before me
COUNTY OF ANOKA) a Notary Public, this 12th day of OCTOBER,
19 88, by Jeffrey N. Caine, Land Surveyor.



Nancy L. Caine
Notary Public, Anoka County, Minnesota
My Commission expires 9-22-92

"NO DELINQUENT TAXES AND TRANSFER ENTRIES"

October 19th 1988

Charles R. LeBlanc
Anoka County

Ally S. R...
Deputy

1988
Donald C. Bailey, M. Dwyer

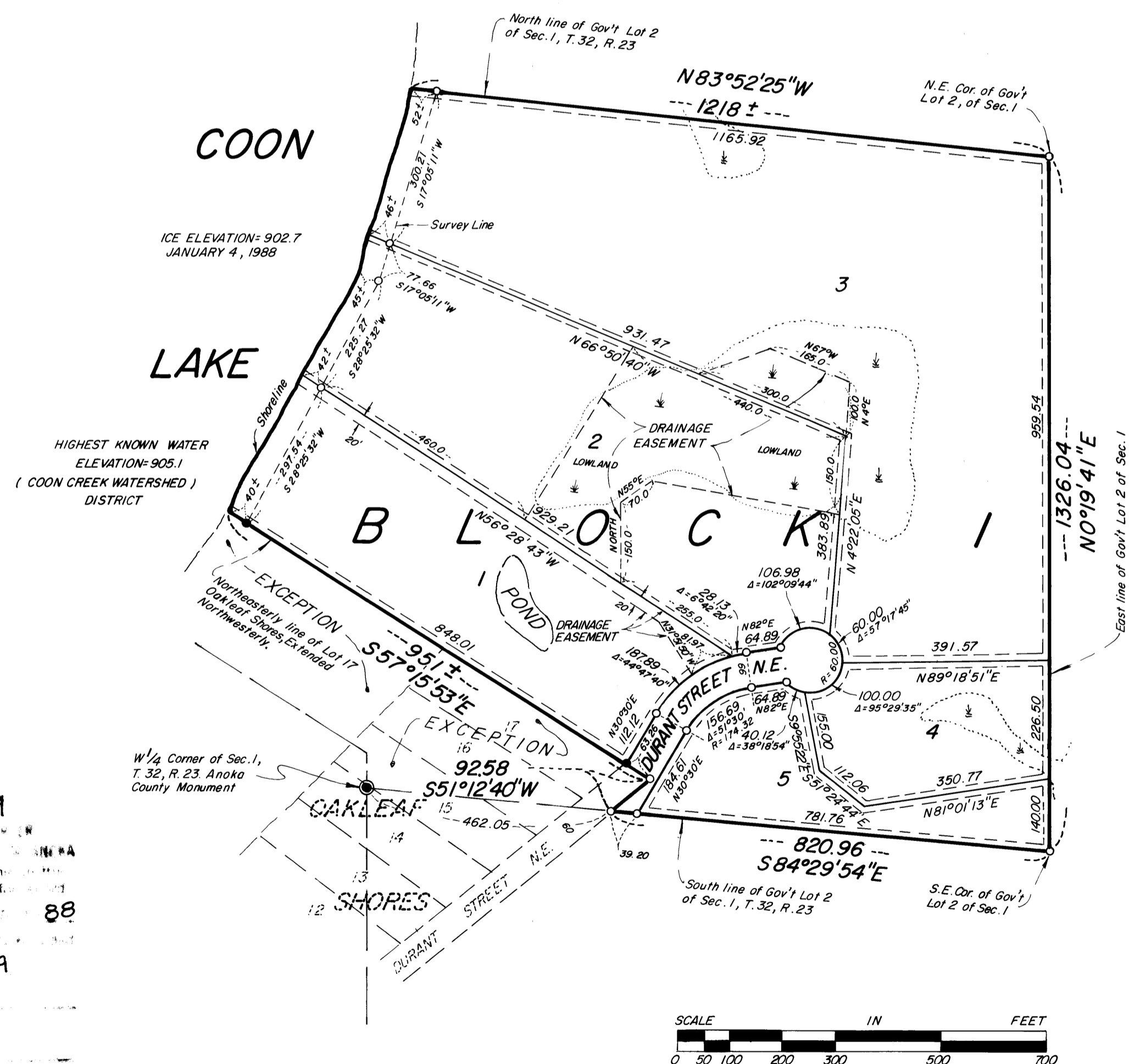
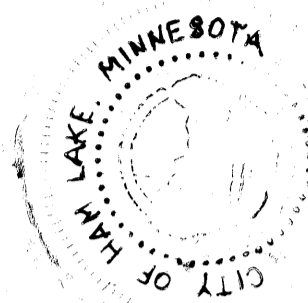
CITY OF HAM LAKE

We hereby certify that the City Council of the City of Ham Lake, Anoka County, Minnesota, duly accepted and approved the plat of INDEPENDENT SHORES at a regular meeting held this 5th day of July, 19 88. If applicable, the written comments and recommendations of the Commissioner of Transportation and the County Highway Engineer have been received by the city or the prescribed 30 day period has elapsed without receipt of such comments and recommendations, as provided by Minn. Statutes, Section 505.03, Subd. 2.

By Maity Schultzy Mayor By Uain A. Nivala Clerk

Checked and approved this 19th day of OCTOBER, 19 88.

By MERLYN D. ANDERSON by Larry D. Stein deputy
Anoka County Surveyor

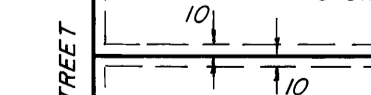


827359
OCT 19 1988
4 P
39 of Plats 49
Ted J. Dandahl
Sue Kay Ege

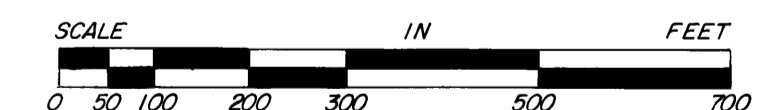
BENCH MARK ELEVATION=907.40 U.S.G.S.

60 D. SPIKE IN SOUTH FACE OF 40 INCH TRIPLE OAK TREE APPROXIMATELY 150 FEET WESTERLY OF THE MOST SOUTHERLY CORNER OF LOT 1, BLOCK 1, INDEPENDENT SHORES.

UTILITY AND DRAINAGE EASEMENTS SHOWN AS THIS



BEING 10 FEET IN WIDTH AND ADJOINING ALL LOT LINES, UNLESS SHOWN OTHERWISE



SCALE: 1 INCH = 200 FEET

● DENOTES IRON MONUMENT SET
● DENOTES IRON MONUMENT FOUND

FOR THE PURPOSES OF THIS PLAT THE SOUTH LINE OF GOV'T LOT 2 OF SEC. 1, T. 32, R. 23, IS ASSUMED TO BEAR S84°29'54"E

CAINE & ASSOCIATES
LAND SURVEYORS, INC.