

INNSBRUCK NORTH TOWNHOUSES 3RD ADDITION

KNOW ALL MEN BY THESE PRESENTS: That Darrel A. Farr Development Corp., owner and proprietor of the following described property situate in the County of Anoka, State of Minnesota to wit:

OUTLOT H, INNSBRUCK NORTH lying northerly and easterly of a line described as follows: Commencing at the southwest corner of said OUTLOT H; thence North 0 degrees 04 minutes 36 seconds East along the west line of said OUTLOT H 525.85 feet; thence South 89 degrees 55 minutes 24 seconds East along a northerly line of said OUTLOT H 898.15 feet to an angle point in said northerly line which is the actual point of beginning of the line to be described; thence South 0 degrees 09 minutes 12 seconds West 132.01 feet; thence South 89 degrees 50 minutes 48 seconds East 408.58 feet to the east line of said OUTLOT H and there terminating.

also OUTLOT G, INNSBRUCK NORTH lying easterly of INNSBRUCK NORTH TOWNHOUSES 2ND ADDITION, Anoka County, Minnesota.

Have caused the same to be surveyed and platted as INNSBRUCK NORTH TOWNHOUSES 3RD ADDITION and do hereby donate and dedicate to the public for public use forever the drive as shown on this plat.

In witness whereof said Darrel A. Farr Development Corp has caused these presents to be signed by its proper officer and its corporate seal to be hereunto affixed this 30th day of July A.D. 1973.

In Presence of: Darrel A. Farr Development Corp.

Jeddie G. Bruce As to Darrel A. Farr Darrel A. Farr President
Raymond R. O'Neil

STATE OF MINNESOTA On this 30th day of July A.D. 1973, COUNTY OF HENNEPIN before me a Notary Public, within and for said County and State, personally appeared Darrel A. Farr, to me duly sworn, did say that he is President of Darrel A. Farr Development Corp., the corporation named in the foregoing instrument, that the seal affixed to said instrument is the corporate seal of said corporation, and that said instrument was signed and sealed in behalf of said corporation by authority of its Board of Directors, and said Darrel A. Farr acknowledged said instrument to be the free act and deed of said corporation.

Jeddie G. Bruce
Notary Public, Hennepin County, Minnesota
My Commission Expires December 28, 1977

I hereby certify that I have surveyed and platted the property described on this plat as INNSBRUCK NORTH TOWNHOUSES 3RD. ADDITION; that this plat is a correct representation of said survey; that all distances are correctly shown on the plat in feet and decimals of a foot; that all monuments have been correctly placed in the ground as shown on said plat; that the outside boundary lines are correctly designated on said plat; and that there are no wet lands or public highways to be designated on said plat.

Richard F. Chovier
Surveyor-Minnesota Reg. No. 9064

STATE OF MINNESOTA Surveyor's certificate subscribed and sworn to before me, a Notary Public, this 13th day of June, 1973 A.D.

James M. Winter
Notary Public, Hennepin County, Minn.
My Commission Expires March 12, 1980

We hereby certify that the City Council of the City of Fridley, Anoka County, Minnesota duly accepted and approved this plat of INNSBRUCK NORTH TOWNHOUSES 3RD. ADDITION at a regular meeting thereof held this 15th day of OCTOBER A.D. 1973

CITY COUNCIL OF FRIDLEY, MINNESOTA
By Frank L. Diehl Mayor
By Martin E. Brunell Clerk

Checked and approved this 29th day of October A.D. 1973

Ronald W. Anderson
Anoka County Surveyor

"NO DELINQUENT TAXES AND TRANSFER ENTERED"

Oct. 31 1973
Charles R. Lefebvre
Auditor, Anoka County
BY Nancy C. Angora
Deputy

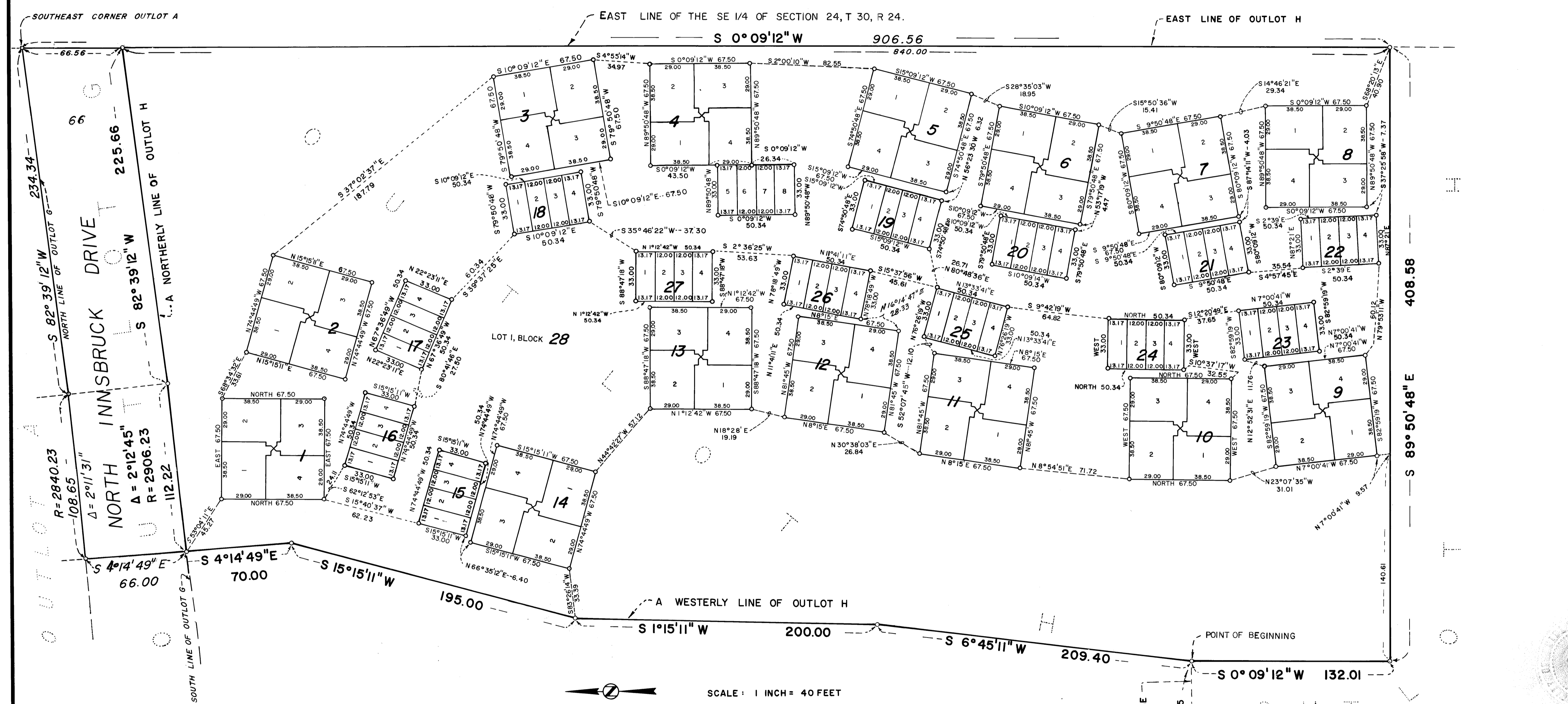
393896
OFFICE OF REGISTER OF DEEDS
STATE OF MINNESOTA, COUNTY OF ANOKA }
I hereby certify that the within instrument was filed in this office for record on the 30th day of July A.D. 1973 at 5:00 o'clock P.M., and was duly recorded in book 14 of Plats, page 12.
Jean Uvea
Register of Deeds
By Jean Uvea, Deputy

CHERRIER WINTER & ASSOCIATES INC.
REGISTERED PROFESSIONAL • LAND SURVEYORS

cwa

SUITE 306
VILLAGE NORTH PROFESSIONAL BLDG.
7420 UNITY AVENUE NORTH
BROOKLYN PARK, MINNESOTA 55443

INNSBRUCK NORTH TOWNHOUSES 3RD. ADDITION



SCALE: 1 INCH = 40 FEET
 O--- DENOTES IRON MONUMENT
 BEARINGS SHOWN ARE ASSUMED

NOTE

SEE SHEET 3 OF 3 SHEETS FOR TYPICAL DIMENSIONS AND ANGLES
 TYPICAL DIAGRAM NO.1 — BLOCKS 1,2,3 AND BLOCK 5 THROUGH BLOCK 14
 TYPICAL DIAGRAM NO.2 — BLOCK 15 THROUGH BLOCK 27
 TYPICAL DIAGRAM NO.3 — BLOCK 4

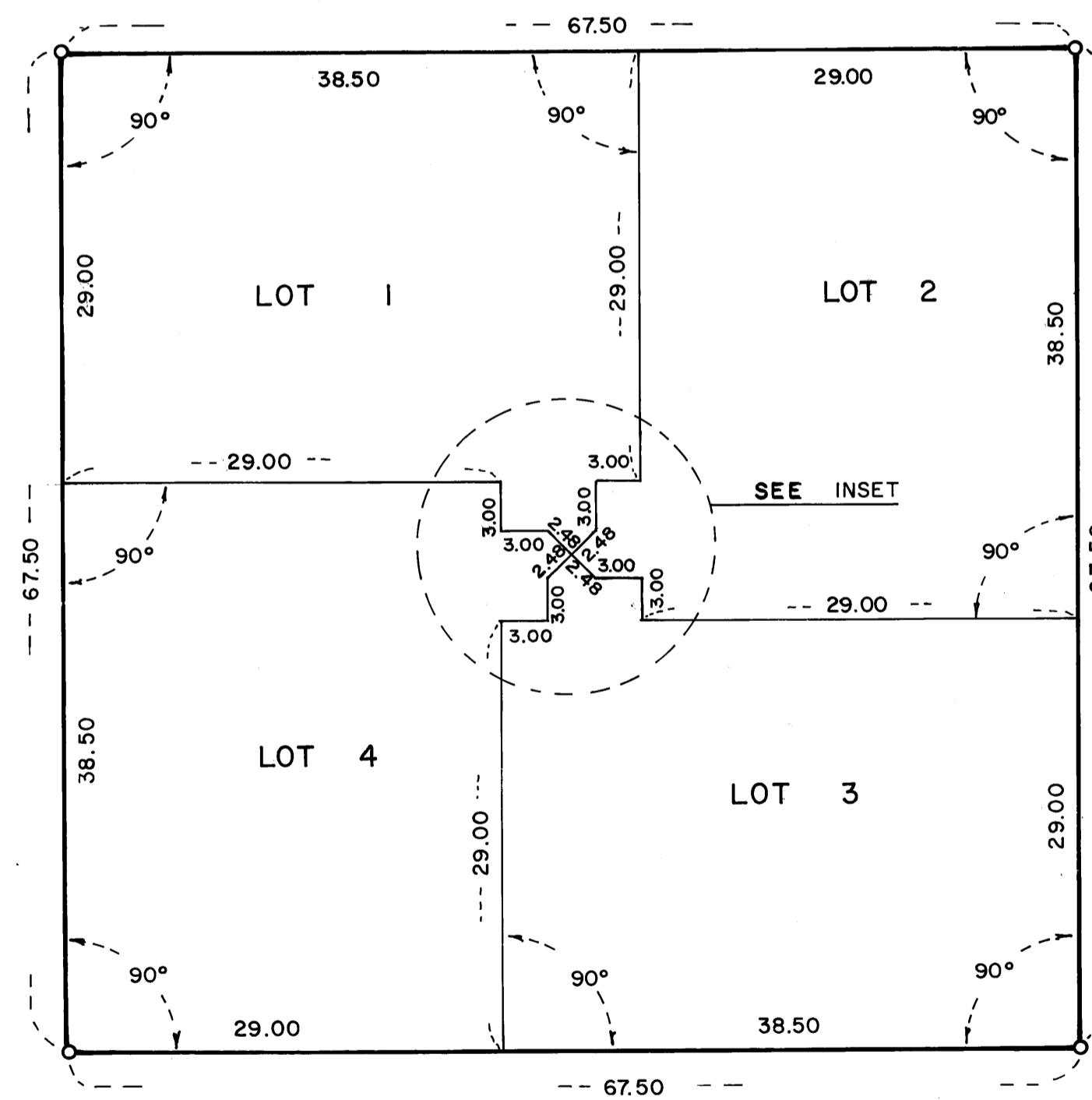
CHERRIER WINTER & ASSOCIATES INC.
 REGISTERED PROFESSIONAL • LAND SURVEYORS



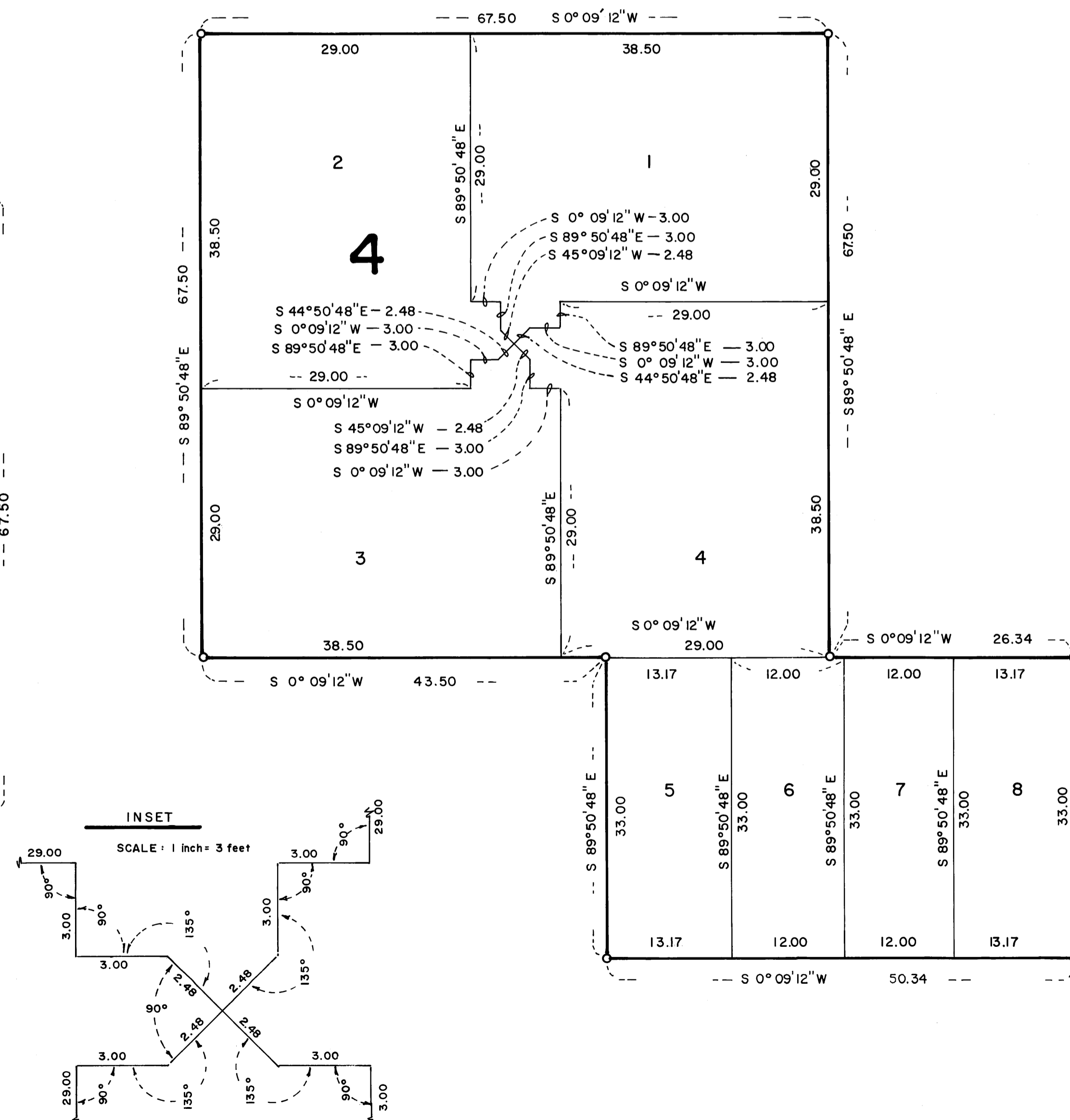
SUITE 306
 VILLAGE NORTH PROFESSIONAL BLDG.
 7420 UNITY AVENUE NORTH
 BROOKLYN PARK, MINNESOTA 55443

INNSBRUCK NORTH TOWNHOUSES 3RD. ADDITION

TYPICAL DIAGRAM NO. 1



TYPICAL DIAGRAM NO. 3



TYPICAL DIAGRAM NO. 2

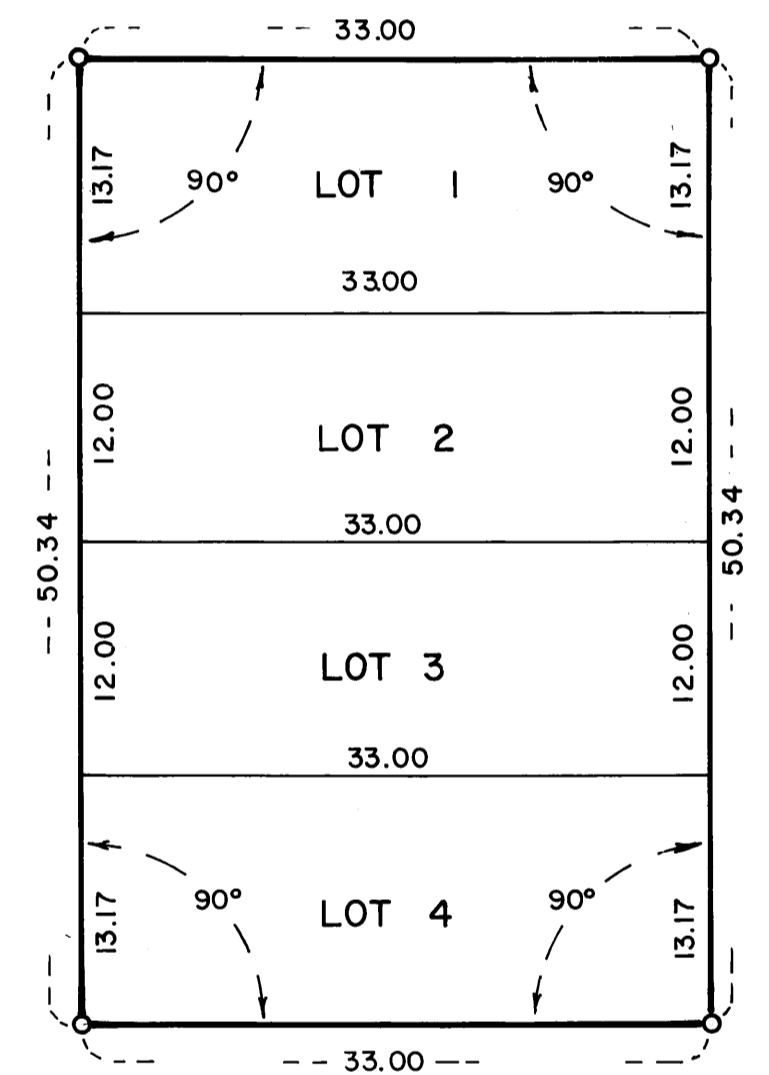


DIAGRAM SCALE
1 INCH = 10 FEET

