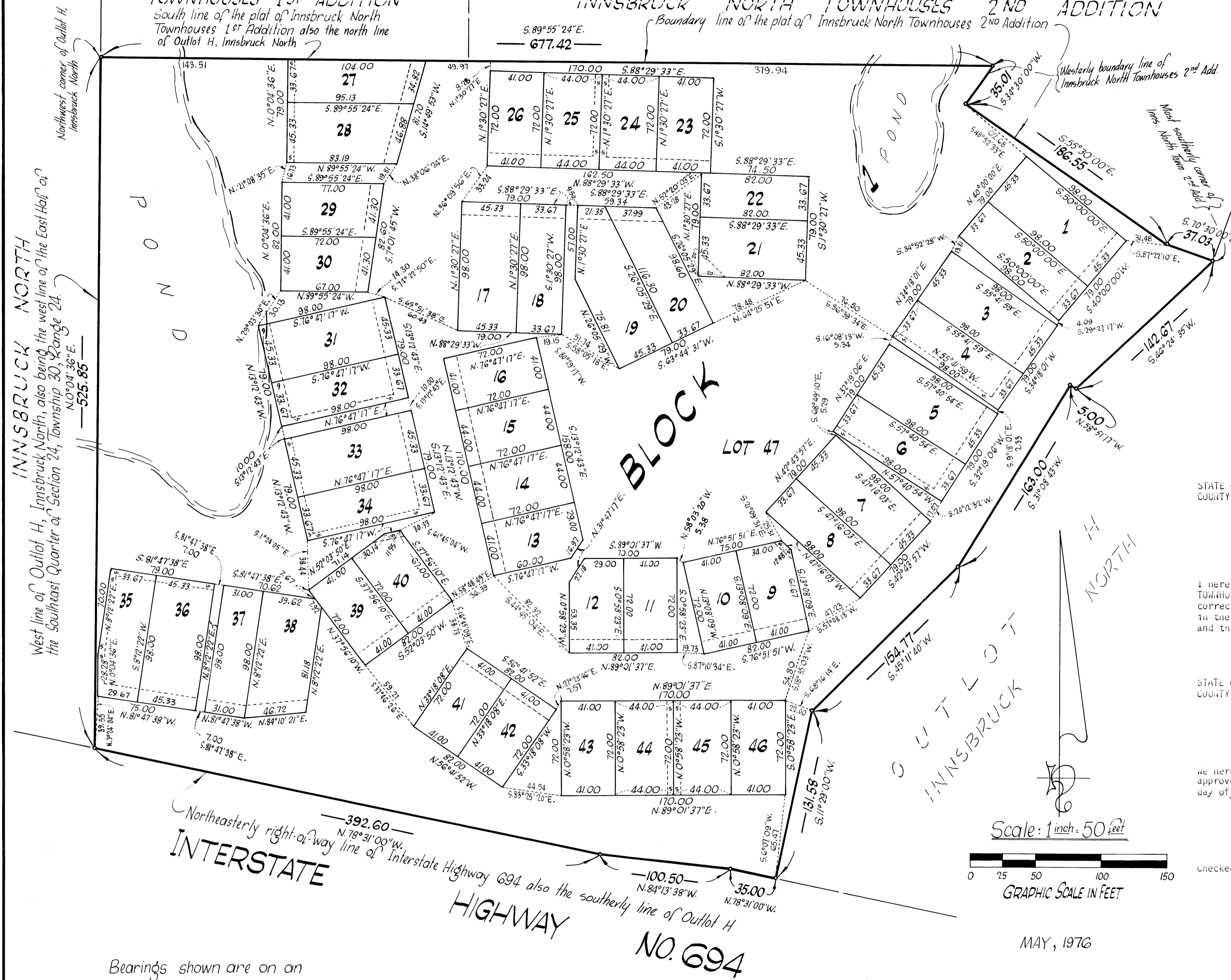


INNSBRUCK NORTH TOWNHOUSES PLAT 4

CITY OF FRIDLEY COUNTY OF ANOKA

INNSBRUCK NORTH TOWNHOUSES 1ST ADDITION
South line of the plat of Innsbruck North Townhouses 1st Addition also the north line of Outlot H, Innsbruck North

INNSBRUCK NORTH TOWNHOUSES 2ND ADDITION
Boundary line of the plat of Innsbruck North Townhouses 2nd Addition

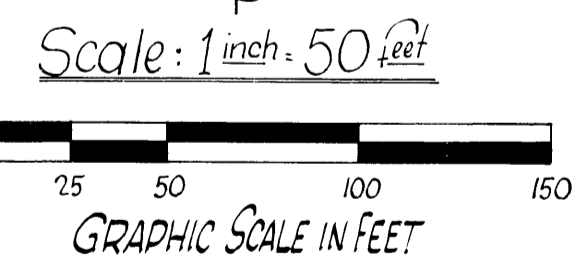


INNSBRUCK NORTH
West line of Outlot H, Innsbruck North, also being the west line of the East Half of the Southeast Quarter of Section 24, Township 30, Range 24.

Bearings shown are on an assumed datum.

o Denotes iron monument marked by Minnesota Registration No. 3795.

Dashed lines denotes Utility and Drainage easements being 10 feet in width and parallel with the lot line unless otherwise shown.



MAY, 1976

SUBURBAN ENGINEERING, INC.
— Engineers —
— Surveyors —

KNOW ALL MEN BY THESE PRESENTS: That Darrel A. Farr Development Corp., a Minnesota corporation, owner and proprietor and First National Bank of Minneapolis, a national banking corporation organized under the laws of the United States, mortgagee of the following described property, situated in the County of Anoka, State of Minnesota to wit:

That part of Outlot H, Innsbruck North described as follows: Beginning at the northwest corner of said outlot; thence on an assumed bearing of S 89°55'24" E, along the north line of said outlot, 677.42 feet to its intersection with a westerly line of Innsbruck North Townhouses 2nd Addition, said westerly line has a bearing of N 34°30'00" E; thence southwesterly and southeasterly, along the boundary line of said 2nd Addition, to the most southerly corner of said 2nd Addition; thence S 46°24'35" W a distance of 142.67 feet; thence N 58°51'17" W a distance of 5.00 feet; thence S 31°08'43" W a distance of 163.00 feet; thence S 45°11'40" W a distance of 154.77 feet; thence S 11°29'00" W a distance of 131.58 feet to the southerly line of said Outlot H; thence westerly, along said southerly line to the southwest corner of said Outlot H; thence northerly, along the westerly line of said Outlot H, to the point of beginning;

have caused the same to be surveyed and platted as INNSBRUCK NORTH TOWNHOUSES PLAT 4 and do hereby donate and dedicate to the public for public use forever the utility and drainage easements as shown on this plat, together with a utility and drainage easement, only, over Lot 47, Block 1. In witness whereof said Darrel A. Farr Development Corp. has caused these presents to be signed by its proper officer and its corporate seal to be hereunto affixed this 25th day of August, 1976 and in witness whereof said First National Bank of Minneapolis has caused these presents to be signed by its proper officers this 25th day of August, 1976.

DARREL A. FARR DEVELOPMENT CORP.
Darrel A. Farr, President

FIRST NATIONAL BANK OF MINNEAPOLIS
Allen Anderson, Commercial Banking Officer
Richard L. Peterson, Asst. Vice President

STATE OF MINNESOTA
COUNTY OF HENNEPIN
The foregoing instrument was acknowledged before me this 25th day of August, 1976 by Darrel A. Farr, President of Darrel A. Farr Development Corp., a Minnesota corporation on behalf of the corporation.

MARY M. KNEWTON
HENNEPIN COUNTY
NOTARY PUBLIC, MINNESOTA
MY COMMISSION EXPIRES APR. 23, 1982

Mary M. Knewton
Notary Public, Hennepin County, Minnesota
My Commission Expires April 23, 1982

STATE OF MINNESOTA
COUNTY OF HENNEPIN
The foregoing instrument was acknowledged before me this 25th day of August, 1976 by Allen Anderson, Commercial Banking Officer and Richard L. Peterson, Asst. Vice President of First National Bank of Minneapolis, a national banking corporation, on behalf of the corporation.

MARY M. KNEWTON
HENNEPIN COUNTY
NOTARY PUBLIC, MINNESOTA
MY COMMISSION EXPIRES APR. 23, 1982

Mary M. Knewton
Notary Public, Hennepin County, Minnesota
My Commission Expires April 23, 1982

I hereby certify that I have surveyed and platted the property described on this plat as INNSBRUCK NORTH TOWNHOUSES PLAT 4; that this plat is a correct representation of said survey, that all distances are correctly shown on the plat in feet and hundredths of a foot; that all monuments have been correctly placed in the ground as shown on said plat; that the outside boundary lines are correctly designated on said plat and that there are no wet lands or public highways to be designated on said plat other than as shown thereon.

E. A. Rathbun
E. A. Rathbun, Minnesota Reg. No. 3795

STATE OF MINNESOTA
COUNTY OF ANOKA
The foregoing instrument was acknowledged before me this 14th day of June, 1976 by E. A. Rathbun, Land Surveyor.

Marietta L. Zuehlke
Notary Public, Anoka County, Minnesota
My Commission Expires April 19, 1977

We hereby certify that the City Council of the City of Fridley, Anoka County, Minnesota duly accepted and approved this plat of INNSBRUCK NORTH TOWNHOUSES PLAT 4 at a regular meeting thereof held this 16th day of August, 1976.

CITY COUNCIL OF FRIDLEY, MINNESOTA
By William J. Nee, Mayor
By Norman M. Quasha, Manager

Checked and approved this 28th day of September, 1976.

Roland W. Anderson
Anoka County Surveyor

453733
OFFICE OF COUNTY RECORDER
STATE OF MINNESOTA, COUNTY OF ANOKA
I hereby certify that the within instrument was filed in this office for record on the SEP 28 1976 A.D., 1976 at 3:30 o'clock P.M., and was duly recorded in book 21 of Plat, page 8.

Sept 28 1976
Charles R. Johnson
William Chapman

Red J. Omsdell
County Recorder
By T. J. Hollenbeck
Deputy