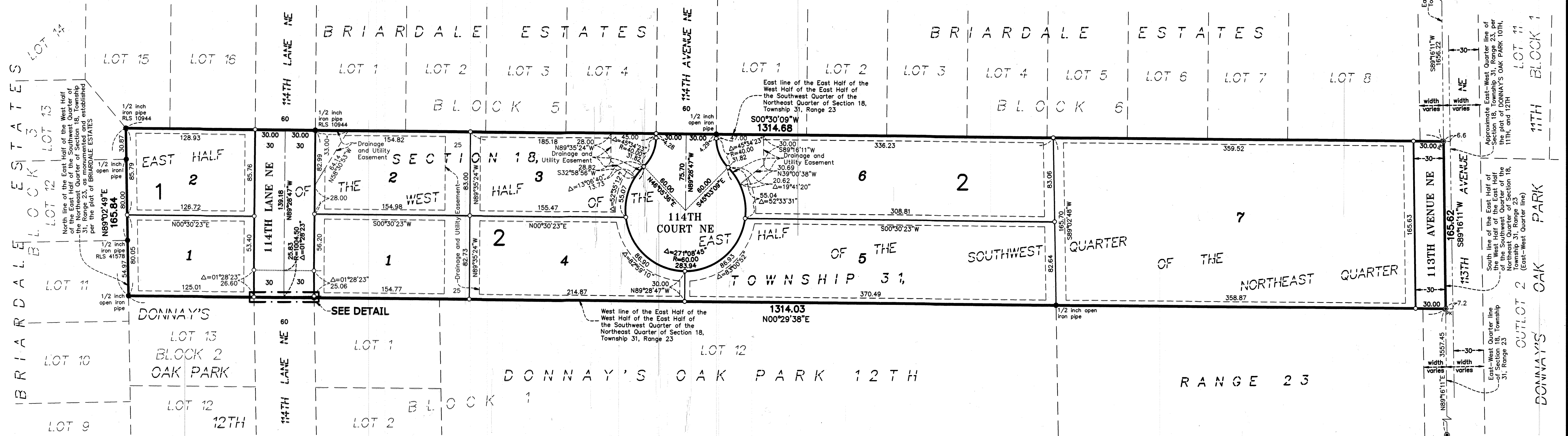
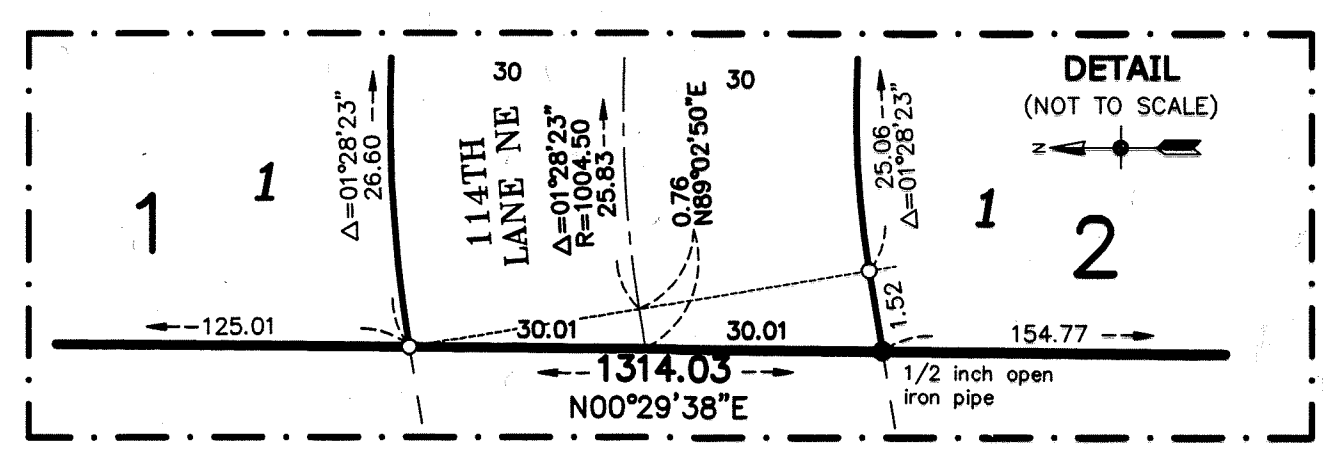


JEFFERSON RIDGE

CITY OF BLAINE
COUNTY OF ANOKA
SEC. 18, TWP. 31, RGE. 23



KNOW ALL PERSONS BY THESE PRESENTS: That Jefferson Ridge LLC, a Minnesota limited liability company, owner of the following described property:
 The East Half of the West Half of the East Half of the Southwest Quarter of the Northeast Quarter of Section 18, Township 31, Range 23, Anoka County, Minnesota.
 Has caused the same to be surveyed and platted as JEFFERSON RIDGE and does hereby dedicate to the public for public use the public ways and the drainage and utility easements as shown on this plat.
 In witness whereof said Jefferson Ridge LLC, a Minnesota limited liability company, has caused these presents to be signed by its proper officer this 15th day of July, 2022.

JEFFERSON RIDGE LLC
 Nathan Raich, President

STATE OF Minnesota
 COUNTY OF Anoka
 This instrument was acknowledged before me on 7/15/2022 by Nathan Raich, president of Jefferson Ridge LLC, a Minnesota limited liability company, on behalf of the company.
 (Signed) Robert J. Mitchell
 (Printed)
 Notary Public, Anoka
 My commission expires Jan 31, 2026

I, Thomas R. Balluff do hereby certify that this plat was prepared by me or under my direct supervision; that I am a duly Licensed Land Surveyor in the State of Minnesota; that this plat is a correct representation of the boundary survey; that all mathematical data and labels are correctly designated on this plat; that all monuments depicted on this plat have been, or will be correctly set within one year; that all water boundaries and wet lands, as defined in Minnesota Statutes, Section 505.01, Subd. 3, as of the date of this certificate are shown and labeled on this plat; and all public ways are shown and labeled on this plat.
 Dated this 14th day of JULY, 2022
 Thomas R. Balluff, Licensed Land Surveyor
 Minnesota License No. 40361

STATE OF Minnesota
 COUNTY OF Anoka
 This instrument was acknowledged before me on July 14, 2022 by Thomas R. Balluff.

Cynthia J. Morica (Signed)
 Cynthia J. Morica (Printed)
 Notary Public, Hennepin County, Minnesota
 My commission expires January 31, 2025

CITY COUNCIL, CITY OF BLAINE, MINNESOTA
 This plat of JEFFERSON RIDGE was approved and accepted by the City Council of the City of Blaine, Minnesota at a regular meeting thereof held this 18th day of April, 2022, and said plat is in compliance with the provisions of Minnesota Statutes, Section 505.03, Subd. 2.
 CITY COUNCIL, CITY OF BLAINE, MINNESOTA

By: [Signature] Mayor
 By: [Signature] Clerk

COUNTY SURVEYOR
 I hereby certify that in accordance with Minnesota Statutes, Section 505.021, Subd. 11, this plat has been reviewed and approved this 28th day of July, 2022

By: David M. Ziegler
 David M. Ziegler
 Anoka County Surveyor
 \$ 56⁰⁰

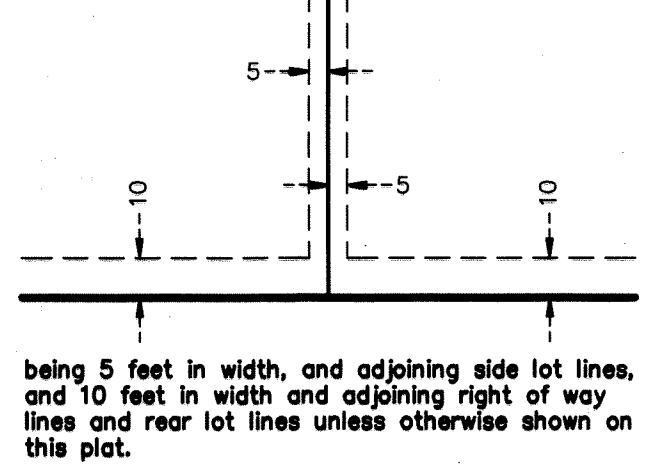
COUNTY AUDITOR/TREASURER
 Pursuant to Minnesota Statutes, Section 505.021, Subd. 9, taxes payable in the year 2022 on the land hereinbefore described have been paid. Also, pursuant to Minnesota Statutes, Section 272.12, there are no delinquent taxes and transfer entered this 28th day of July, 2022.

Pamela J LeBlanc
 Property Tax Administrator
 By: [Signature] Deputy

COUNTY RECORDER/REGISTRAR OF TITLES
 County of Anoka, State of Minnesota
 I hereby certify that this plat of JEFFERSON RIDGE was filed in the office of the County Recorder/Registrar of Titles for public record on this 28th day of July, 2022 at 11:00 o'clock A.M. and was duly recorded as Document Number 2371820.002

Pamela J LeBlanc
 County Recorder/Registrar of Titles
 By: [Signature] Deputy

DRAINAGE AND UTILITY EASEMENTS ARE SHOWN THUS:



For the purposes of this plat, the East line of the West Half of the East Half of the Southwest Quarter of Section 18, Township 31, Range 23 is assumed to have a bearing of South 00 degrees 30 minutes 09 seconds West.
 Denotes 5/8 inch by 14 inch Rebar, set or to be set within one year of recording of this plat and marked with license number 40361
 PK
 Denotes Set PK Nail
 Denotes Found Iron Monument, as noted
 Denotes Found Anoka County Section Monument

