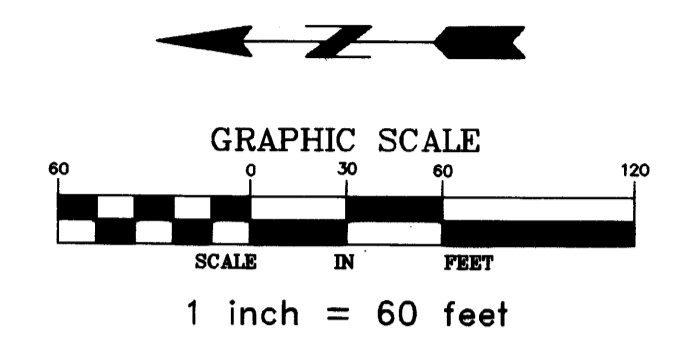
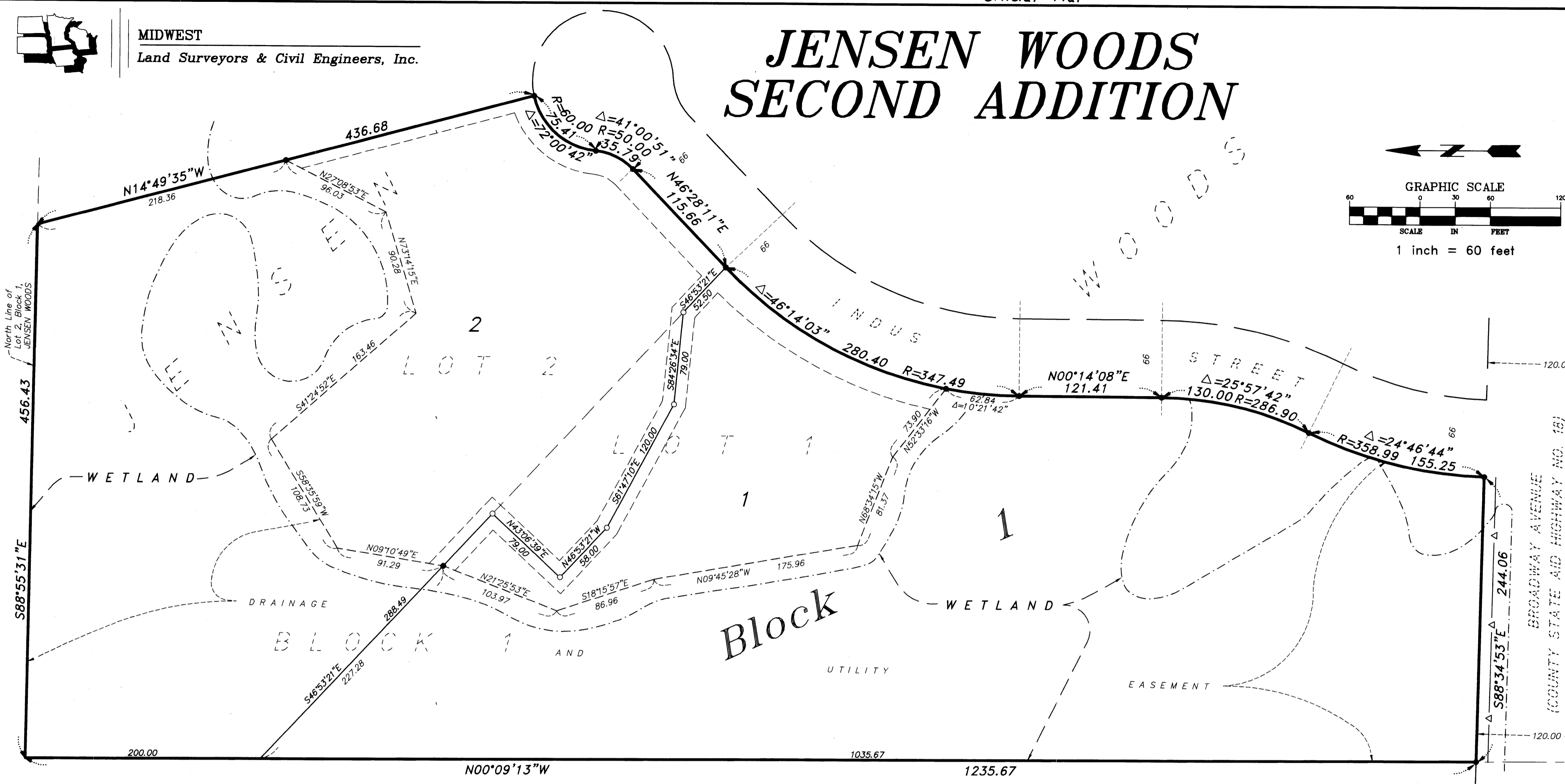


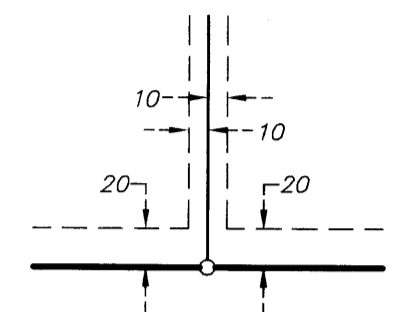
MIDWEST
Land Surveyors & Civil Engineers, Inc.

JENSEN WOODS SECOND ADDITION

TOWNSHIP OF COLUMBUS
COUNTY OF ANOKA
SEC. 4-T32N-R22W
Book 66 Page 19



DRAINAGE AND UTILITY EASEMENTS ARE SHOWN THUS:
BEING 10 FEET IN WIDTH AND ADJOINING LOT LINES AND 20 FEET IN WIDTH AND ADJOINING RIGHT-OF-WAY LINES UNLESS OTHERWISE SHOWN ON THE PLAT.



NOTES:

- DENOTES 1/2 INCH BY 14 INCH IRON PIPE MONUMENT SET AND MARKED WITH A PLASTIC CAP INSCRIBED "RIVARD 19421"
 - DENOTES MONUMENT FOUND
 - △△△ DENOTES RIGHT OF ACCESS DEDICATED TO ANOKA COUNTY PER PLAT OF JENSEN WOODS
- FOR THE PURPOSES OF THIS PLAT THE NORTH LINE OF LOT 2, BLOCK 1, JENSEN WOODS IS ASSUMED TO HAVE A BEARING OF S88°55'31"E.

1873663
OFFICE OF COUNTY RECORDER
STATE OF MINNESOTA, COUNTY OF ANOKA
I hereby certify that the within instrument was filed in this office for record on the 14 day of Nov A.D., 2003 at 9:35 o'clock A.M., and was duly recorded in book 66 page 19.
Margaret J. Davine
County Recorder
By J.M.H.

KNOW ALL PERSONS BY THESE PRESENTS: That R.E. Kolstad LTD., a Minnesota Corporation, fee owner of the following described property situated in the County of Anoka, State of Minnesota to wit:
Lot 1, Block 1, JENSEN WOODS, Anoka County, Minnesota.
And that Bradley M. Kolstad and Susan M. Kolstad, husband and wife, fee owners of the following described property situated in the County of Anoka, State of Minnesota to wit:
Lot 2, Block 1, JENSEN WOODS, Anoka County, Minnesota.

Have caused the same to be surveyed and platted as JENSEN WOODS SECOND ADDITION, and do hereby donate and dedicate to the public use forever the easements for drainage and utility purposes as shown on the plat.

In witness whereof said R.E. Kolstad LTD, a Minnesota Corporation, has caused these presents to be signed by its proper officer this 19th day of SEPTEMBER, 2003.

R.E. KOLSTAD LTD
Roger E. Kolstad
Roger E. Kolstad, President

In witness whereof said Bradley M. Kolstad and Susan M. Kolstad, husband and wife, have hereunto set their hands this 19th day of September, 2003.

Bradley M. Kolstad
Bradley M. Kolstad
Susan M. Kolstad
Susan M. Kolstad

STATE OF MINNESOTA
COUNTY OF Anoka
The foregoing instrument was acknowledged before me this 19th day of September, 2003 by Bradley M. Kolstad and Susan M. Kolstad, husband and wife.

REBECCA A. BAUNE
NOTARY PUBLIC - MINNESOTA
MY COMMISSION EXPIRES
JANUARY 31, 2005

Rebecca A. Baune
Notary Public, Anoka County, Minnesota
My commission expires 1-31-05

I HEREBY CERTIFY THAT THE CURRENT AND DELINQUENT TAXES ON THE LANDS DESCRIBED WITHIN ARE PAID AND THE TRANSFER IS ENTERED
Nov. 14, 2003
MARGARET J. DAVINE
COUNTY RECORDER
BY J. Culver
DEPUTY PROPERTY TAX ADMINISTRATOR

We the Chairman and Town Clerk of the Township of Columbus, Anoka County Minnesota, do hereby certify that on this 22nd day of October, 2003 said Township Board duly approved the plat of JENSEN WOODS 2ND ADDITION, and authorized certification of such action of the Board by its Chairman and Town Clerk, if applicable, the written comments and recommendations of the Commissioner of Transportation and the County Highway Engineer have been received by the township or the prescribed 30 day period has elapsed without receipt of such comments and recommendations, as provided by Minn. Statutes, Section 505.03, Subd. 2.

TOWNSHIP OF COLUMBUS, MINNESOTA
By Mel Matten Chairman By Barbara A. Masteller Town Clerk

Checked and approved this 5th day of NOVEMBER, 2003.

Terry J. Dahl
Anoka County Surveyor

Recommended for approval this 12th day of NOVEMBER, 2003.

Robert J. Schmitt
Anoka County Highway Engineer

This plat was approved and accepted by the Board of County Commissioners of the County of Anoka, State of Minnesota at a regular meeting thereof held this 12th day of November, 2003.

BOARD OF COUNTY COMMISSIONERS OF ANOKA COUNTY, MINNESOTA
By Dan Elert Chairman By John Jay McLaughlin County Administrator

This plat was approved as to form and execution on this 13th day of November, 2003.

Anthony C. Palumbo
Anoka County Attorney

I, Blake L. Rivard, hereby certify that I have surveyed and platted the property described on this plat as JENSEN WOODS SECOND ADDITION; that this plat is a correct representation of the survey; that all distances are correctly shown on the plat in feet and hundredths of a foot; that all monuments will be correctly placed in the ground as shown within one year after the recording date of this plat; that the outside boundary lines are correctly designated on the plat and that there are no wetlands as defined in MS 505.02, Subd. 1 or public highways to be designated on said plat other than as shown.

Blake L. Rivard
Blake L. Rivard, Land Surveyor
Minnesota License No. 19421

STATE OF MINNESOTA
COUNTY OF Anoka
The foregoing instrument was acknowledged before me this 19th day of September, 2003, by Blake L. Rivard, Land Surveyor.

ANITA M. SPADING
NOTARY PUBLIC - MINNESOTA
MY COMMISSION EXPIRES
JANUARY 31, 2005

Anita M. Spading
Notary Public, Anoka County, Minnesota
My commission expires JAN 31, 2005

STATE OF MINNESOTA
COUNTY OF Anoka
The foregoing instrument was acknowledged before me this 19th day of September, 2003, by Roger E. Kolstad, as President of R.E. Kolstad LTD, a Minnesota Corporation,

REBECCA A. BAUNE
NOTARY PUBLIC - MINNESOTA
MY COMMISSION EXPIRES
JANUARY 31, 2005

Rebecca A. Baune
Notary Public, Anoka County, Minnesota
My commission expires 1-31-05

RECEIPT # 2003159657 / \$ 155.00