

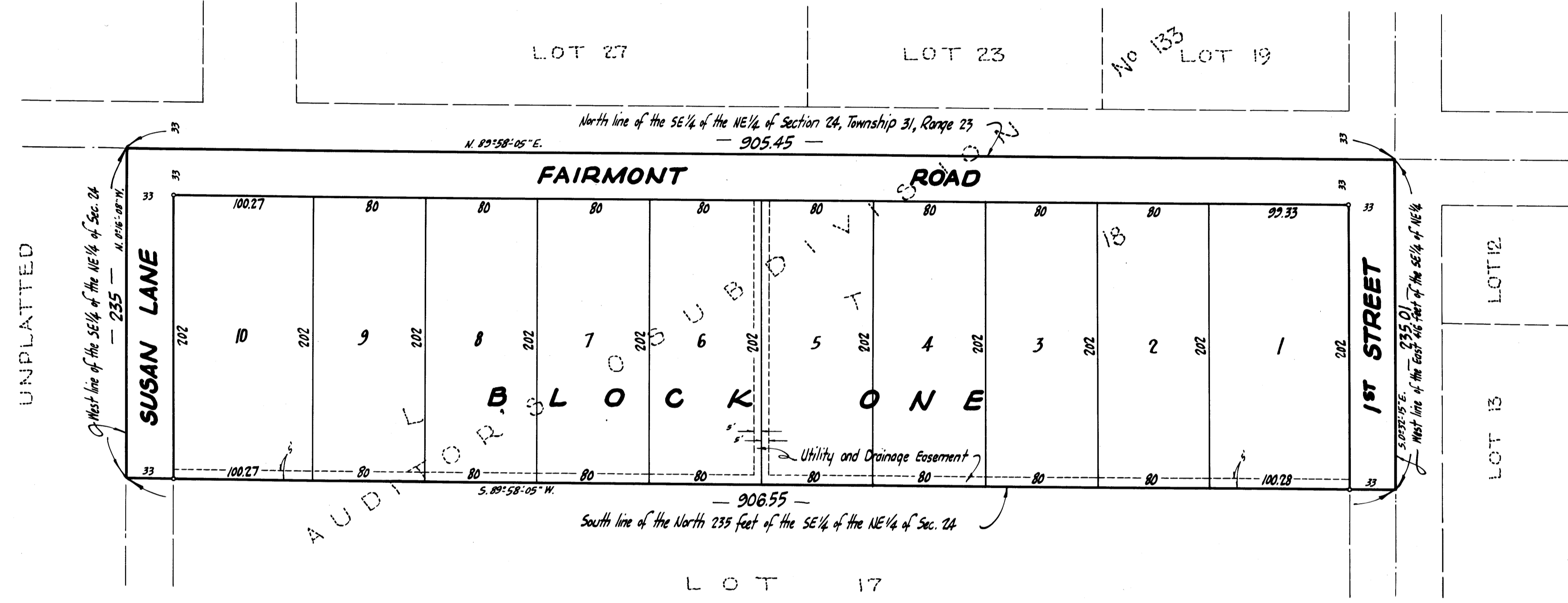
# JODY TERRACE

- VILLAGE of BLAINE - COUNTY of ANOKA -

*Suburban* Engineering, Inc.  
Engineers & Surveyors

o Denotes Iron Monument

Scale 1"=60' Bearings are assumed March, 1962



Checked and approved by me, this 28<sup>th</sup> day of March A.D. 1962.

by Robert W. Anderson Anoka County Surveyor

KNOW ALL MEN BY THESE PRESENTS: that A.A. Garter and Lola C. Garter, his wife, owners and proprietors of the following described property situate in the State of Minnesota and County of Anoka, to-wit: The North 235 feet of the SE 1/4 of the NE 1/4 of Section 24, Township 31, Range 23, except the East 416 feet thereof, also known as Lot 18, Auditor's Subdivision, N<sup>o</sup> 133, Anoka County, Minnesota; have caused the same to be surveyed and platted as JODY TERRACE, and do hereby donate and dedicate to the public for public use forever the Street, Road and Lane, and also the Utility and Drainage Easements as shown in the annexed plat. In witness whereof said A.A. Garter and Lola C. Garter, his wife, have hereunto set their hands and seals this 16 day of March A.D. 1962.

In Presence of: Joseph J. Kiesel and Walter Maas } As to A.A. Garter and Lola C. Garter

Signed by A.A. Garter Seal - A.A. Garter

Signed by Lola C. Garter Seal - Lola C. Garter

State of Minnesota }  
County of Anoka } On this 16 day of March A.D. 1962, before me, a Notary Public, personally appeared A.A. Garter and Lola C. Garter, his wife, to me known to be the persons described in and who executed the foregoing instrument, and they acknowledged that they executed the same as their own free act and deed.

I hereby certify that I have surveyed and platted the property described on this plat as JODY TERRACE; that this plat is a correct representation of said survey, that all distances are correctly shown on said plat in feet and decimals of a foot, that the monuments for guidance of future surveys have been correctly placed in the ground as shown on the annexed plat; that the outside boundary lines are correctly designated on said plat, and that there are no wet lands or public highways to be designated on said plat other than are shown thereon.

State of Minnesota }  
County of Hennepin } Above certificate subscribed and sworn to before me, a Notary Public within and for said State and County on this 16<sup>th</sup> day of March A.D. 1962.

Joe Smith  
Notary Public, Hennepin County, Minnesota  
My Commission Expires \_\_\_\_\_

E. A. R. Attkin  
Surveyor - Minnesota Registration N<sup>o</sup> 3795

Warren O. Olson  
Notary Public, Hennepin County, Minnesota  
My Commission Expires \_\_\_\_\_

We hereby certify that the Village Council of the Village of Blaine, Anoka County, Minnesota, duly accepted and approved the annexed plat of JODY TERRACE at a regular meeting thereof held this 16 day of March A.D. 1962.

VILLAGE of BLAINE, ANOKA COUNTY, MINNESOTA

by Alfred Bernstein Mayor  
by Jerome A. Trago Clerk

233067  
OFFICE OF REGISTER OF DEEDS  
STATE OF MINNESOTA, COUNTY OF ANOKA }  
I hereby certify that the within instrument was filed in this office for record on the day of MAR 28 1962 A.D. 1962 at 2:32 o'clock P.M. and was duly recorded in book "K" of Plats page 21.  
Gertrude Skissner  
Register of Deeds  
By Margaret R. Skissner Deputy

TAXES PAID  
This 28 day of March 1962  
Benneth W. Campbell  
Auditor, Anoka County, Minn.  
By John E. Lage Deputy

I HEREBY CERTIFY THAT TAXES FOR THE YEAR 1961 ON THE LANDS DESCRIBED WITHIN ARE PAID  
Walter B. Powers  
County Treasurer