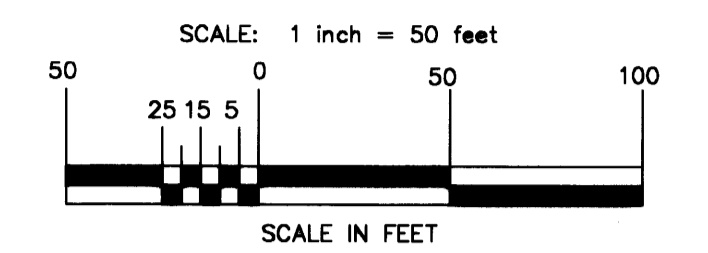
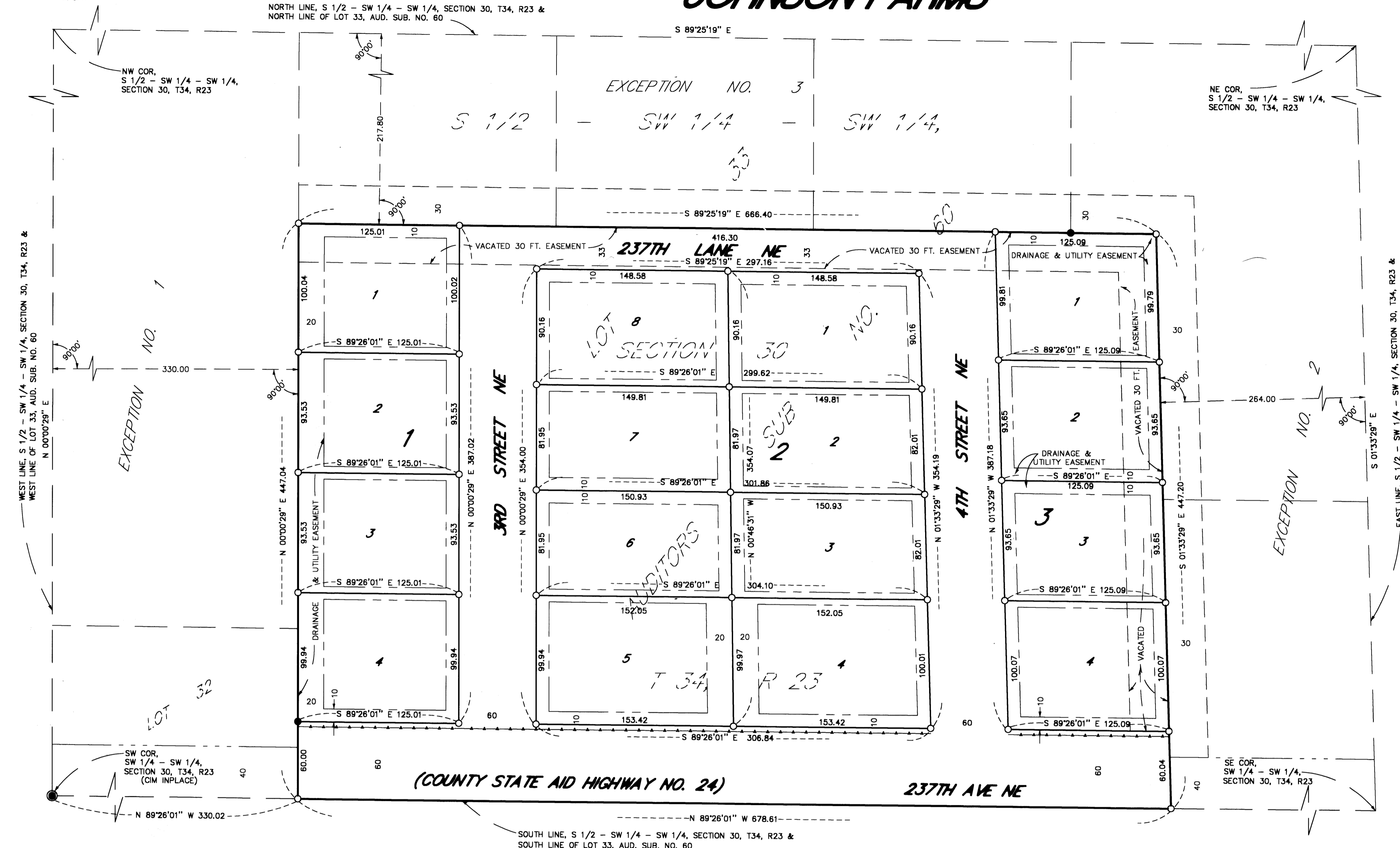


OFFICIAL PLAT

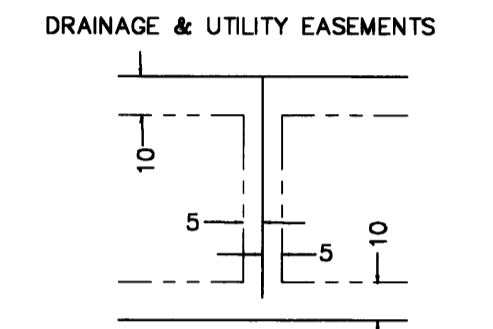
JOHNSON FARMS

Book 65 Book 38

CITY OF BETHEL COUNTY OF ANOKA SECTION 30, T34 R23



FOR THE PURPOSES OF THIS PLAT, THE SOUTH LINE, S 1/2 - SW 1/4 - SW 1/4, SECTION 30, T34, R23, ANOKA COUNTY, MINNESOTA IS ASSUMED TO BEAR N 89° 26' 01\"



BEING 10 FEET IN WIDTH AND ADJOINING STREET AND REAR LOT LINES AND BEING 5 FEET IN WIDTH AND ADJOINING SIDE LOT LINES UNLESS OTHERWISE SHOWN ON THIS PLAT

- Legend for symbols: ANOKA COUNTY MONUMENT, IRON PIPE SET- WITH PLASTIC PLUG, IRON PIPE FOUND IN PLACE- WITH PLASTIC PLUG, RIGHT OF ACCESS DEDICATED TO THE COUNTY OF ANOKA.

1841713 OFFICE OF COUNTY RECORDER STATE OF MINNESOTA, COUNTY OF ANOKA I hereby certify that the within instrument was filed in this office for record on the 26 AUG A.D., 2003 at 3:30 o'clock P.M., and was duly recorded in book 65 page 38 MAUREEN J. DEVINE County Recorder By KHS Deputy

KNOW ALL PERSONS BY THESE PRESENTS. That Bethel Development Corporation, a Minnesota Corporation, contract purchaser of the following described property and Leonard M. Johnson and Cathern M. Johnson, husband and wife, owners of the following described property situated in the County of Anoka, State of Minnesota, to wit: Lot 33, Auditor's Subdivision No. 60, Anoka County, Minnesota, excepting therefrom those portions of said Lot 33 lying within the three (3) following described tracts:

In witness whereof said Leonard M. Johnson and Cathern M. Johnson, have hereunto set our hands this 20th day of AUGUST 2003 Leonard M. Johnson Cathern M. Johnson

STATE OF MINNESOTA COUNTY OF ANOKA The foregoing instrument was acknowledged before me this 20th day of AUGUST 2003, by Leonard M. Johnson and Cathern M. Johnson, husband and wife. KRISTENE M. GAFKIEN Notary Public - MINNESOTA My Commission Expires Jan. 31, 2006

Have caused the same to be surveyed and platted as JOHNSON FARMS and do hereby donate and dedicate to the public for public use forever the avenue, lane and streets as shown on this plat and also dedicating the easements as shown on this plat for drainage and/or utility purposes only. Also dedicating to the County of Anoka the right of access onto County State Aid Highway No. 24 as shown on the plat.

I, Don E. Hansen, hereby certify that I have surveyed and platted the property described on this plat as JOHNSON FARMS; that this plat is a correct representation of the survey; that all distances are correctly shown on the plat in feet and hundredths of a foot; that all monuments have been correctly placed in the ground as shown; that the outside boundary lines are correctly designated on the plat and that there are no wet lands or public highways to be designated other than shown.

In witness whereof said Bethel Development Corporation, has caused these presents to be signed by its proper officer, this 20th day of AUGUST 2003. BETHEL DEVELOPMENT CORP.: Sean Maynard its Pres. STATE OF MINNESOTA COUNTY OF ANOKA The foregoing instrument was acknowledged before me this 20th day of August 2003 by SEAN MAYNARD as PRESIDENT of Bethel Development Corporation, a Minnesota corporation, on behalf of the corporation.

Don E. Hansen, Land Surveyor Minnesota License No. 9260

KRISTENE M. GAFKIEN Notary Public - MINNESOTA My Commission Expires Jan. 31, 2006

STATE OF MINNESOTA COUNTY OF ANOKA The foregoing Surveyors Certificate was acknowledged before me this 16th day of July 2003 by Don E. Hansen, Land Surveyor, Minnesota License No. 9260

MARK R. HANSEN Notary Public - MINNESOTA My Commission Expires Jan. 31, 2005

CITY OF BETHEL CITY COUNCIL The City Council of the City of Bethel, Minnesota, duly accepted and approved the plat of JOHNSON FARMS at a regular meeting held this 20th day of August 2003. If applicable, the written comments and recommendations of the Commissioner of Transportation and the County Highway Engineer have been received by the city or the prescribed 30 day period has elapsed without receipt of such comments and recommendations, as provided by Minn. Statutes, Section 205.03, Subd. 2. signed: Mayor Attest: Colleen P. Anderson City Clerk

Checked and approved this 26th day of AUGUST 2003 By: Anoka County Surveyor DON E. HANSEN LAND SURVEYOR M.R.L.S. NO. 9260 CAMBRIDGE, MN 55008

RECEIPT # 200317803 / \$ 575.00