

JOHNSTONS BLAINE ESTATES

City of Blaine
County of Anoka
Sec. 34, T31, R23

KNOW ALL PERSONS BY THESE PRESENTS: That Stephen L. Johnston and Cindy L. Johnston, husband and wife, owners of the following described property:

The West Half of the South Half of Lot 30, SPRING LAKE PARK WOODLAND, Anoka County, Minnesota.

and

Lot 31, SPRING LAKE PARK WOODLAND, Anoka County, Minnesota, EXCEPT the East Half thereof. Subject to 5 foot easement along the rear line for public utilities.

Have caused the same to be surveyed and platted as JOHNSTONS BLAINE ESTATES and do hereby dedicate to the public for public use the public way and drainage and utility easements as shown by this plat.

In witness whereof said Stephen L. Johnston and Cindy L. Johnston, husband and wife, have hereunto set their hands this 6th day of October, 2017.

Stephen L. Johnston
Stephen L. Johnston
Cindy L. Johnston
Cindy L. Johnston

STATE OF MINNESOTA
COUNTY OF Anoka

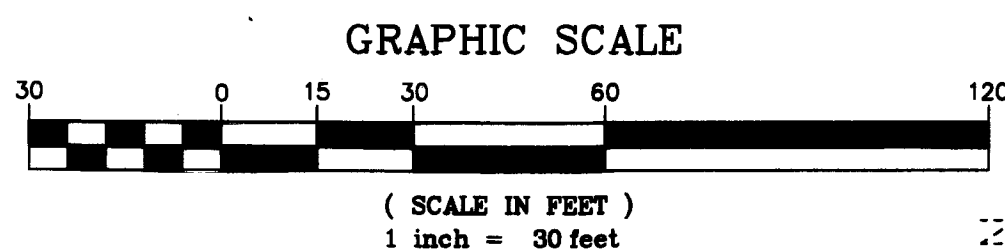
This instrument was acknowledged before me this 6th day of October, 2017 by Stephen L. Johnston and Cindy L. Johnston, husband and wife.

Nicole A. Johnson
Nicole A. Johnson
Notary Public, Anoka County, Minnesota
My Commission Expires January 31, 2020

I Jason E. Rud do hereby certify that this plat was prepared by me or under my direct supervision; that I am a duly Licensed Land Surveyor in the State of Minnesota; that this plat is a correct representation of the boundary survey; that all mathematical data and labels are correctly designated on this plat; that all monuments depicted on this plat have been, or will be correctly set within one year; that all water boundaries and wet lands, as defined in Minnesota Statutes, Section 505.01, Subd. 3, as of the date of this certificate are shown and labeled on this plat; and all public ways are shown and labeled on this plat.

Dated this 4th day of October, 2017.

Jason E. Rud
Jason E. Rud, Licensed Land Surveyor
Minnesota License No. 41578



STATE OF MINNESOTA
COUNTY OF Anoka

This instrument was acknowledged before me this 4th day of October, 2017 by Jason E. Rud.

Nicole A. Johnson
Nicole A. Johnson
Notary Public, Anoka County, Minnesota
My Commission Expires January 31, 2020

City Council, City of Blaine, Minnesota

This plat of JOHNSTONS BLAINE ESTATES was approved and accepted by the City Council of the City of Blaine, Minnesota at a regular meeting thereof held this 21st day of September, 2017, and said plat is in compliance with the provisions of Minnesota Statutes, Section 505.03, Subd. 2.

City Council, City of Blaine, Minnesota

By Alan Key Mayor

By Callie Clerk

County Surveyor

I hereby certify that in accordance with Minnesota Statutes, Section 505.021, Subd. 11, this plat has been reviewed and approved this 11th day of December, 2017.

Larry D. Holium by Charles F. Setzen, Deputy
Larry D. Holium
Anoka County Surveyor

COUNTY AUDITOR/TREASURER

Pursuant to Minnesota Statutes, Section 505.021, Subd. 9, taxes payable in the year 2017, on the land hereinbefore described have been paid. Also, pursuant to Minnesota Statutes, Section 272.12, there are no delinquent taxes and transfer entered this 11th day of December, 2017.

Janel M. Sawyer
Janel M. Sawyer
Property Tax Administrator
By Jim Beckman Deputy

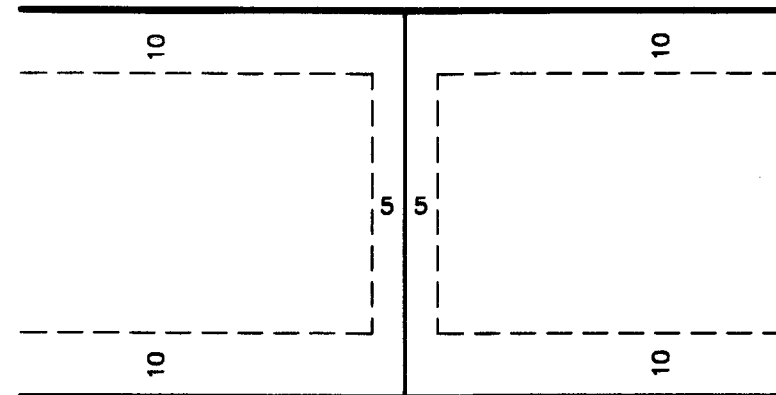
COUNTY RECORDER/REGISTRAR OF TITLES
COUNTY OF ANOKA, STATE OF MINNESOTA

I hereby certify that this plat of JOHNSTONS BLAINE ESTATES was filed in the office of the County Recorder/Registrar of Titles for public record on this 11th day of December, 2017, at 1:34 o'clock P.M. and was duly recorded as Document Number 553472.001.

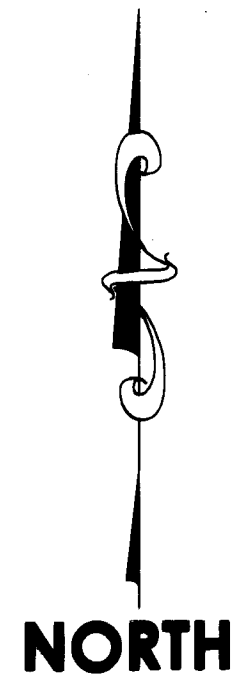
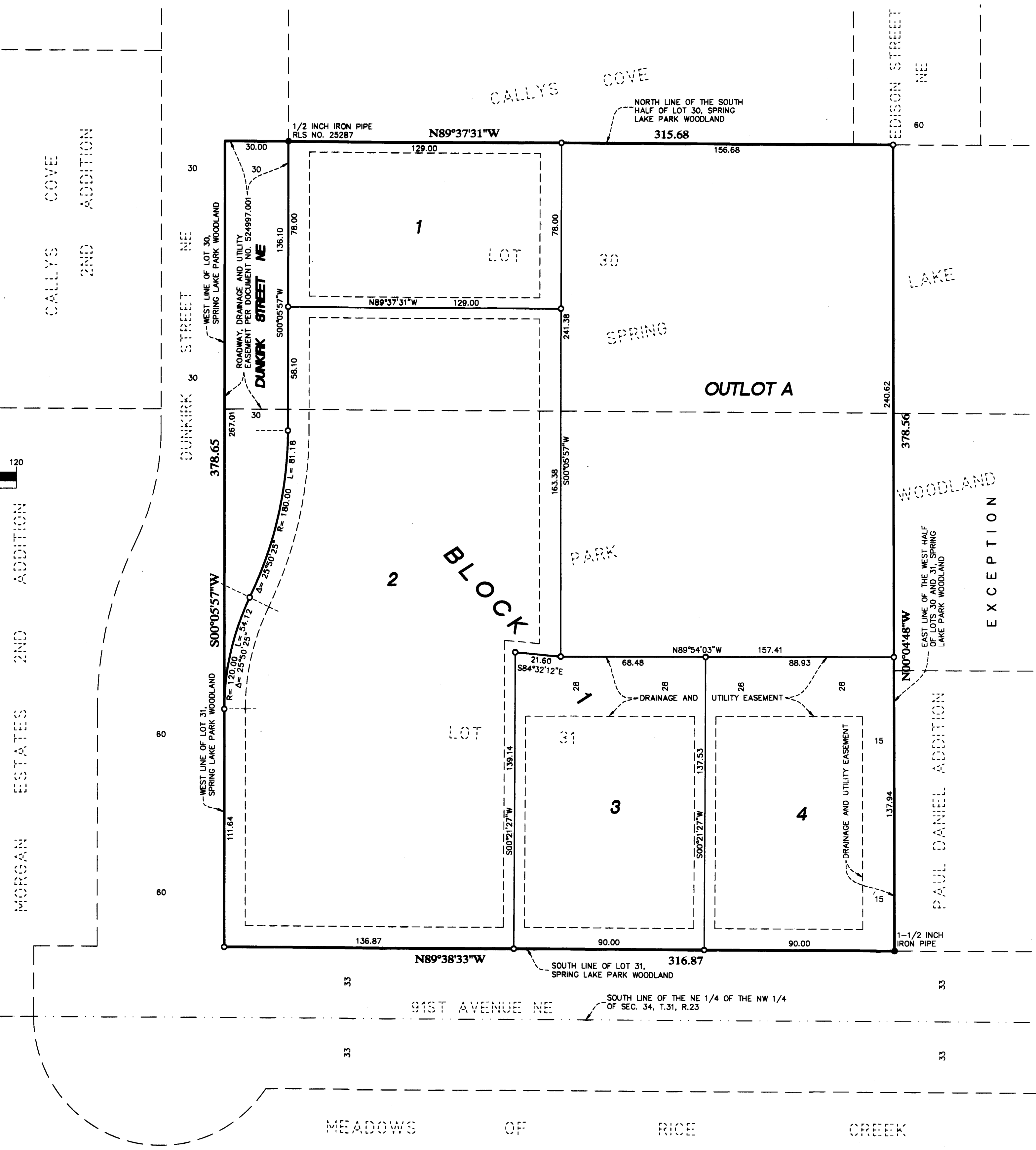
Janel M. Sawyer
Janel M. Sawyer
County Recorder/Registrar of Titles
By Jim Beckman Deputy

EASEMENT DETAIL

DRAINAGE AND UTILITY EASEMENTS ARE SHOWN THUS:



BEING 5 FEET IN WIDTH AND ADJOINING SIDE LOT LINES AND 10 FEET IN WIDTH AND ADJOINING STREET LINES AND REAR LOT LINES, UNLESS OTHERWISE SHOWN ON THIS PLAT.



For the purposes of this plat the south line of Lot 31, SPRING LAKE PARK WOODLAND, Anoka County, Minnesota, is assumed to have a bearing of North 89 degrees 38 minutes 33 seconds West.

- DENOTES IRON PIPE FOUND AS LABELED.
- DENOTES SET 1/2 INCH BY 14 INCH IRON PIPE MARKED BY RLS NO. 41578.

E. G. RUD & SONS, INC.
Professional Land Surveyors
187, 1877
\$56.00