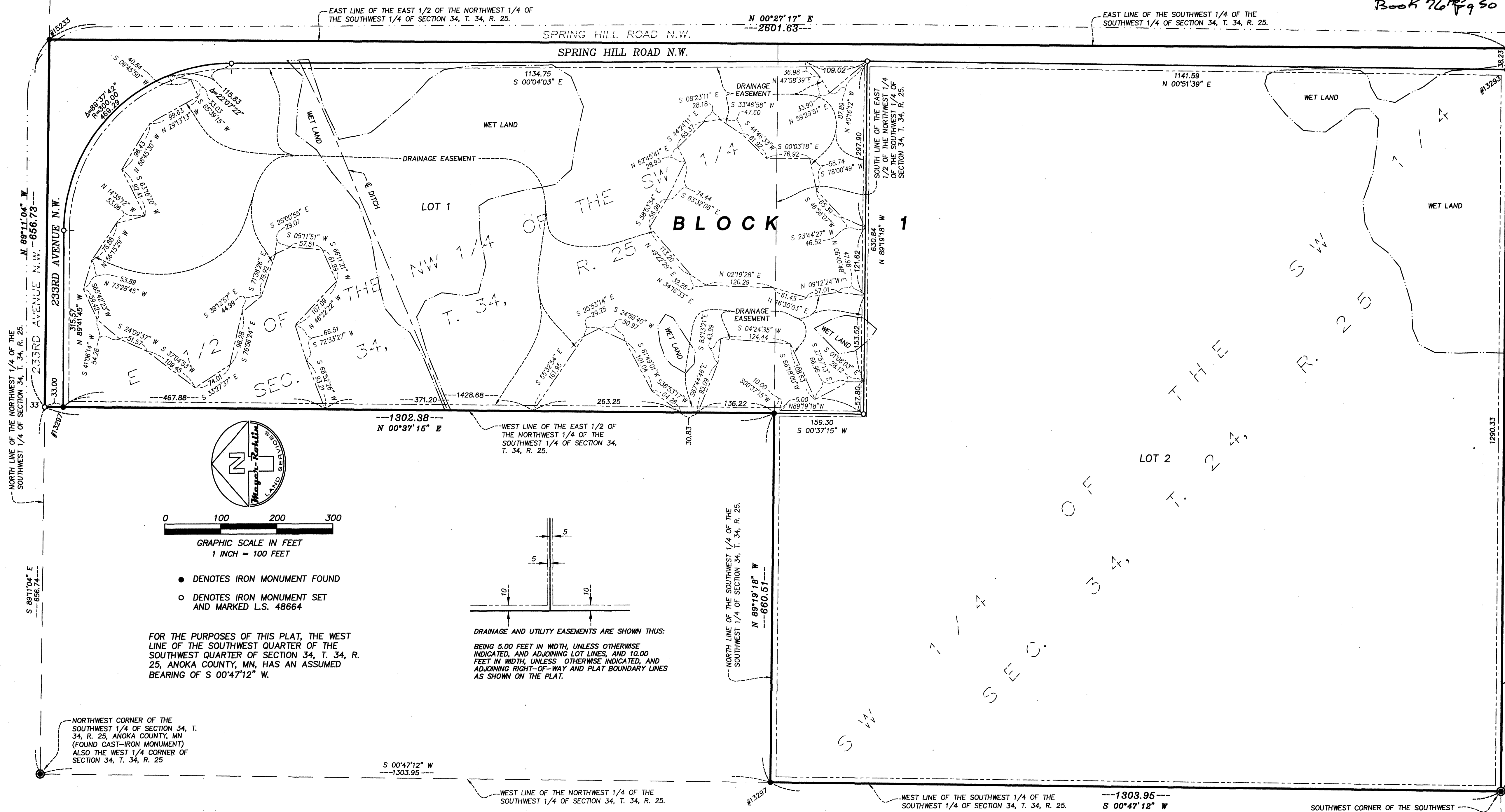


JONES ADDITION

CITY OF ST. FRANCIS
COUNTY OF ANOKA
SECTION 34, T. 34, R. 25

Book 76 Page 50



KNOW ALL PERSONS BY THESE PRESENTS: That Norma J. Jones, a single person, owner of the following described property:

The Southwest Quarter of the Southwest Quarter and the East Half of the Northwest Quarter of the Southwest Quarter of Section 34, Township 34, Range 25.

Has caused the same to be surveyed and platted as JONES ADDITION and does hereby dedicate to the public for public use the public ways and the drainage and utility easements as created by this plat.

In witness whereof said Norma J. Jones, a single person, has hereunto set her hand this 19 day of Dec 2013.

STATE OF MN
COUNTY OF Sherburne
Norma J. Jones
Norma J. Jones

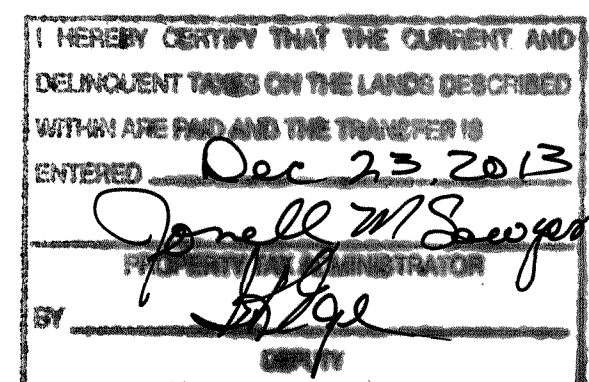
This instrument was acknowledged before me this 19th day of Dec. 2013 by Norma J. Jones, a single person.



Twila D Bergmann
Receptionist Twila D Bergmann
Notary Public, Sherburne County, MN
My Commission Expires 1-31-17

I Abram A. Niemela do hereby certify that this plat was prepared by me or under my direct supervision; that I am a duly Licensed Land Surveyor in the State of Minnesota; that this plat is a correct representation of the boundary survey; that all mathematical data and labels are correctly designated on this plat; that all monuments depicted on this plat have been, or will be correctly set within one year; that all water boundaries and wet lands, as defined in Minnesota Statutes, Section 505.01, Subd. 3, as of the date of this certificate are shown and labeled on this plat; and all public ways are shown and labeled on this plat.

STATE OF MINNESOTA
COUNTY OF WRIGHT
This instrument was acknowledged before me this 17th day of DECEMBER, 2013 by Abram A. Niemela.



Dated this 17th day of December 2013.
Abram A. Niemela
Abram A. Niemela, Licensed Land Surveyor
Minnesota License No. 48664

Trace C. McCoy
Notary Public, Stearns County, MINNESOTA
My Commission Expires Jan. 31, 2018

City Council, City of St. Francis, Minnesota
This plat of JONES ADDITION was approved and accepted by the City Council of the City of St. Francis, Minnesota at a regular meeting thereof held this 23rd day of December, 2013, and said plat is in compliance with the provisions of Minnesota Statutes, Section 505.03, Subd. 2.

By: [Signature] Mayor
By: Barbara Held Clerk



County Surveyor
I hereby certify that in accordance with Minnesota Statutes, Section 505.021, Subd. 11, his plat has been reviewed and approved this 23rd day of DECEMBER, 2013.

Larry D. Helton
Larry D. Helton, Anoka County Surveyor

WILDERNESS RIDGE ESTATES

2075136.002
Office of Records & Title

OF TITLES
STATE OF MINNESOTA COUNTY OF ANOKA
I hereby certify that the within instrument was filed in this office for record on the 23rd day of Dec 2013 at 10:48 AM.
and was duly recorded in Book 76 Page 50
Jonell M Sawyer
Recorder of Deeds

\$56.00