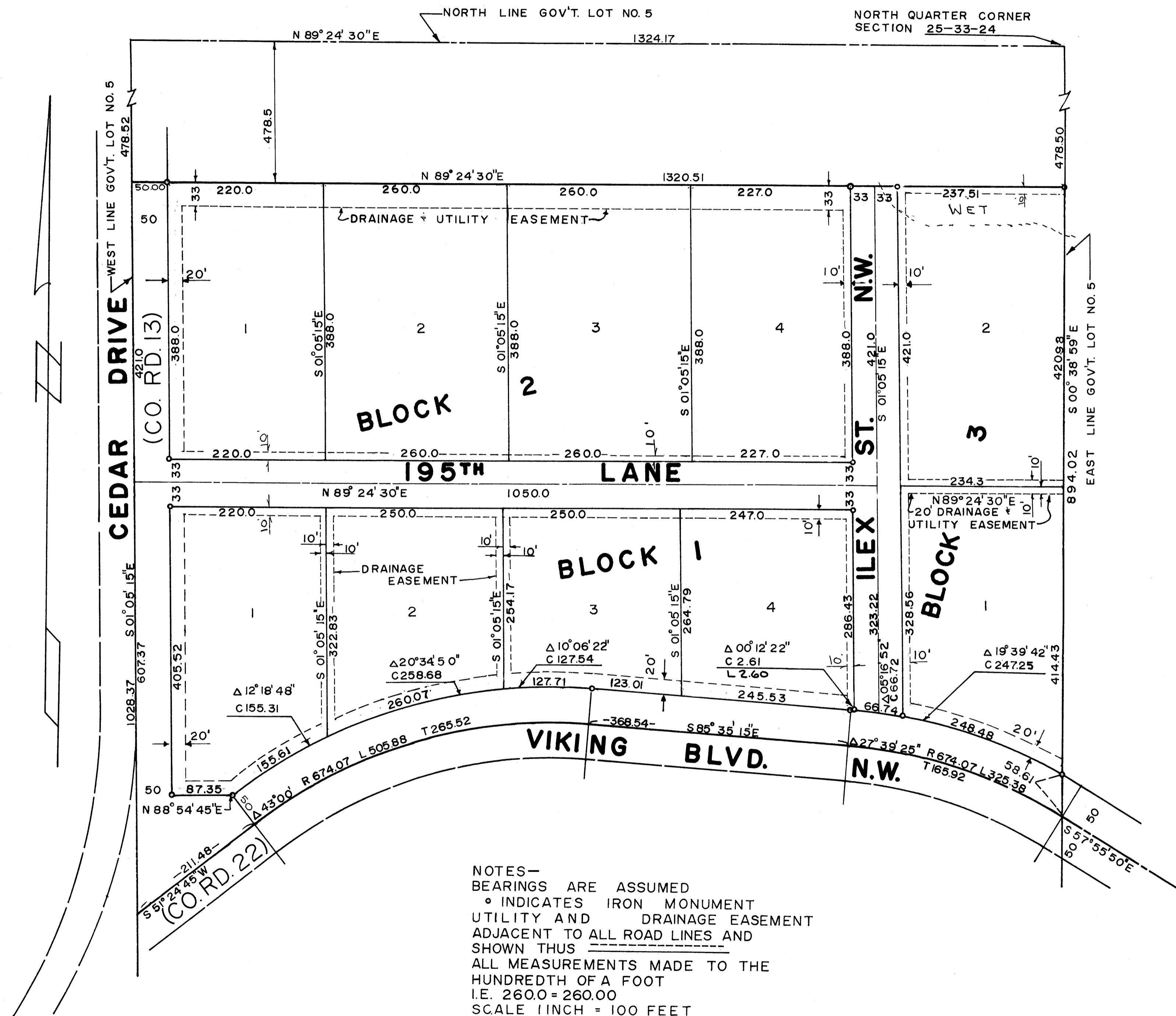


JOSEPH GROVE ADDITION

TOWN OF OAK GROVE ~ ANOKA CO. MN.



NOTES—
 BEARINGS ARE ASSUMED
 ° INDICATES IRON MONUMENT
 UTILITY AND DRAINAGE EASEMENT
 ADJACENT TO ALL ROAD LINES AND
 SHOWN THUS
 ALL MEASUREMENTS MADE TO THE
 HUNDREDTH OF A FOOT
 I.E. 260.0 = 260.00
 SCALE 1/4" = 100 FEET

KNOW ALL MEN BY THESE PRESENTS: That we, Joseph W. Grove and Margaret C. Grove, husband and wife, owners and proprietors of the following described property situated in Anoka County, Minnesota to wit: That part of Government Lot Number 5, Section 25, Town 33, Range 24, lying north of the center-line of County Road No. 22, except the north 478.5 feet thereof. Have caused the same to be surveyed and platted as JOSEPH GROVE ADDITION, and do hereby dedicate and donate to the public, for public use forever, the drive, street, lane, boulevard, drainage and/or utility easements as shown on the annexed plat. Also dedicating to the County of Anoka the right of access to Viking Boulevard & Cedar Drive, from Lots 1, 2, 3, & 4, Blk. 1, Lot 1, Blk. 2, & Lot 1, Blk. 3 as shown on the annexed plat.

In witness whereof we have hereunto set our hands this 4 day of October, A.D. 1973

Joseph W. Grove Margaret C. Grove
 Joseph W. Grove Margaret C. Grove

STATE OF MINNESOTA }
 COUNTY OF ANOKA } On this 7 day of Oct, A.D. 1973, before me, a Notary Public within and for said County and State, personally appeared Joseph W. Grove and Margaret C. Grove, husband and wife, to me known to be the persons described in and who executed the foregoing instrument and they affirm and acknowledge that they executed the same as their free act and deed.

Walter J. Zuberg
 Notary Public, ANOKA County, Minnesota
 My Commission expires Aug 2, 1975

I hereby certify that I have surveyed and platted the property described on this plat as JOSEPH GROVE ADDITION; that this plat is a correct representation of said survey; that all distances are correctly shown on the plat in feet and decimals of a foot; that the monuments for the guidance of future surveys have been correctly placed in the ground as shown on the plat; that the outside boundary lines are correctly designated on the plat; and there are no wet lands or public highways to be designated on said plat other than as shown.

James L. Kurth
 James L. Kurth
 Minnesota Registered Land Surveyor No. 5332

STATE OF MINNESOTA }
 COUNTY OF ANOKA } Above certificate subscribed and sworn to before me, a Notary Public, within and for said County and State this 12 day of October, A.D. 1973

Jeanne M. Kurth
 Jeanne M. Kurth
 Notary Public, Anoka County, Minnesota
 My Commission expires March 13, 1977

Annexed plat of JOSEPH GROVE ADDITION was approved by the Town Board of the Township of Oak Grove at a regular meeting thereof held this 19 day of Oct, A.D. 1973

Ernst K. Knutson Walter J. Zuberg
 Chairman Clerk

Recommended for approval this 13 day of December, A.D. 1973

C. J. Lundheim
 County Highway Engineer, Anoka County, Minnesota

This plat was approved as to form and execution this 20 day of December, A.D. 1973

Stephen H. Montgomery
 Asst County Attorney, Anoka County, Minnesota

Checked and approved this 27th day of November, A.D. 1973

Ronald W. Anderson
 County Surveyor, Anoka County Minnesota

This plat was approved and accepted by the Board of County Commissioners of the County of Anoka, State of Minnesota at a regular meeting thereof held this 27 day of Nov, A.D. 1973

Walter C. ... Charles A. ...
 Chairman County Auditor

"NO DELINQUENT TAXES
 AND TRANSFER ENTERED"
Jan 7 1974
Charles ...
 Auditor, Anoka County
 By William ...
 Deputy

403242
 OFFICE OF REGISTER OF DEEDS
 STATE OF MINNESOTA, COUNTY OF ANOKA }
 I hereby certify that the within instrument was filed in this office for record on the 7 day of JAN, 1974, A.D., 1974, at 10 o'clock A.M., and was duly recorded in book 15 of Plats, page 3.
Fred J. ...
 Register of Deeds
 By Margaret ...
 Deputy