

KNOW ALL PERSONS BY THESE PRESENTS: That Entsminger Enterprises LLC, a Minnesota limited liability company, owner of the following described property:

Outlot A, R AND M BURMAN INDUSTRIAL PARK, Anoka County, Minnesota.

JP FARMS

Has caused the same to be surveyed and platted as JP FARMS and does hereby dedicate to the public for public use the public ways and the drainage and utility easements as shown on this plat.

In witness whereof said Entsminger Enterprises LLC, a Minnesota limited liability company, has caused these presents to be signed by its proper officer this 14 day of March, 2023

ENTSMINGER ENTERPRISES LLC

Jeffrey S. Entsminger
Jeffrey S. Entsminger, as Chief Manager

STATE OF Minnesota
COUNTY OF Anoka

This instrument was acknowledged before me this 14th day of March, 2023 by Jeffrey S. Entsminger, as Chief Manager of Entsminger Enterprises LLC, a Minnesota limited liability company.

Lalae Mack (Signature)
Lalae Mack (Print Name)
Notary Public, Anoka County, Minnesota
My Commission Expires January 31, 2027

I Jason E. Rud do hereby certify that this plat was prepared by me or under my direct supervision; that I am a duly Licensed Land Surveyor in the State of Minnesota; that this plat is a correct representation of the boundary survey; that all mathematical data and labels are correctly designated on this plat; that all monuments depicted on this plat have been, or will be correctly set within one year; that all water boundaries and wet lands, as defined in Minnesota Statutes, Section 505.01, Subd. 3, as of the date of this certificate are shown and labeled on this plat; and all public ways are shown and labeled on this plat.

Dated this 13th day of MARCH, 2023

Jason E. Rud
Jason E. Rud, Licensed Land Surveyor
Minnesota License No. 41578

STATE OF MINNESOTA
COUNTY OF Anoka

This instrument was acknowledged before me this 13th day of March, 2023 by Jason E. Rud.

Lalae Mack (Signature)
Lalae Mack (Print Name)
Notary Public, Anoka County, Minnesota
My Commission Expires January 31, 2027

CITY COUNCIL, CITY OF OAK GROVE, MINNESOTA

This plat of JP FARMS was approved and accepted by the City Council of the City of Oak Grove, Minnesota at a regular meeting thereof held this 14th day of November, 2023 and said plat is in compliance with the provisions of Minnesota Statutes, Section 505.03, Subd. 2.

CITY COUNCIL, CITY OF OAK GROVE, MINNESOTA

By [Signature] Mayor
By J. Rickland Clerk

COUNTY SURVEYOR

I hereby certify that in accordance with Minnesota Statutes, Section 505.021, Subd. 11, this plat has been reviewed and approved this 27th day of April, 2023.

David M. Ziegemeier
David M. Ziegemeier
Anoka County Surveyor

COUNTY AUDITOR/TREASURER

Pursuant to Minnesota Statutes, Section 505.021, Subd. 9, taxes payable in the year 2023 on the land hereinbefore described have been paid. Also, pursuant to Minnesota Statutes, Section 272.12, there are no delinquent taxes and transfer entered this 21 day of April, 2023.

Pamela J. Lablanc
Pamela J. Lablanc
Property Tax Administrator

By Lana Karick, Deputy

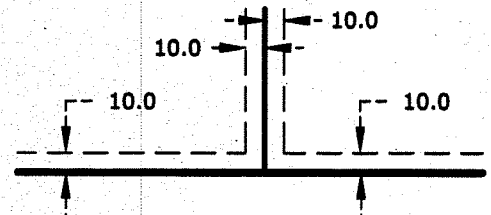
COUNTY RECORDER/REGISTRAR OF TITLES
COUNTY OF ANOKA, STATE OF MINNESOTA

I hereby certify that this plat of JP FARMS was filed in the office of the County Recorder/Registrar of Titles for public record on this 27 day of April, 2023 at 4:49 o'clock A.M. and was duly recorded as Document Number 238 9512.003.

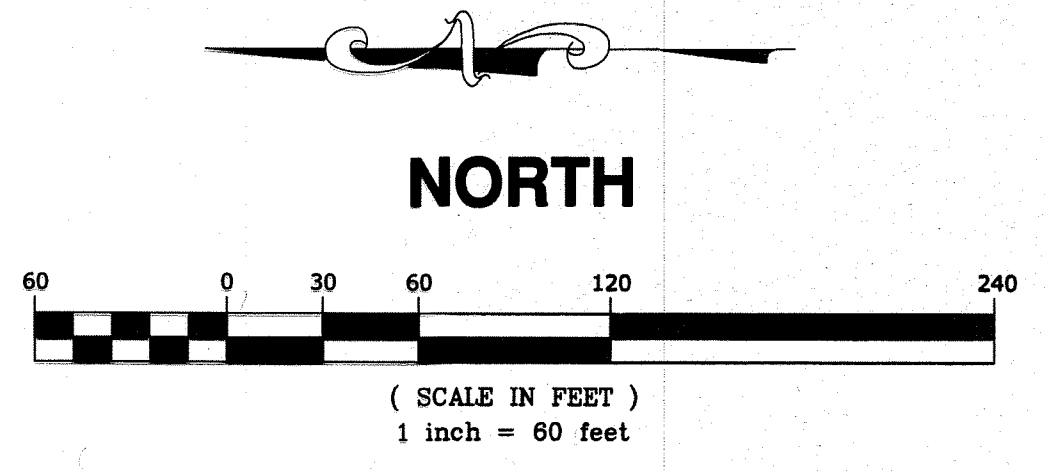
Pamela J. Lablanc
County Recorder/Registrar of Titles

By Lana Karick, Deputy

DRAINAGE AND UTILITY EASEMENTS ARE SHOWN THUS:
(NOT TO SCALE)

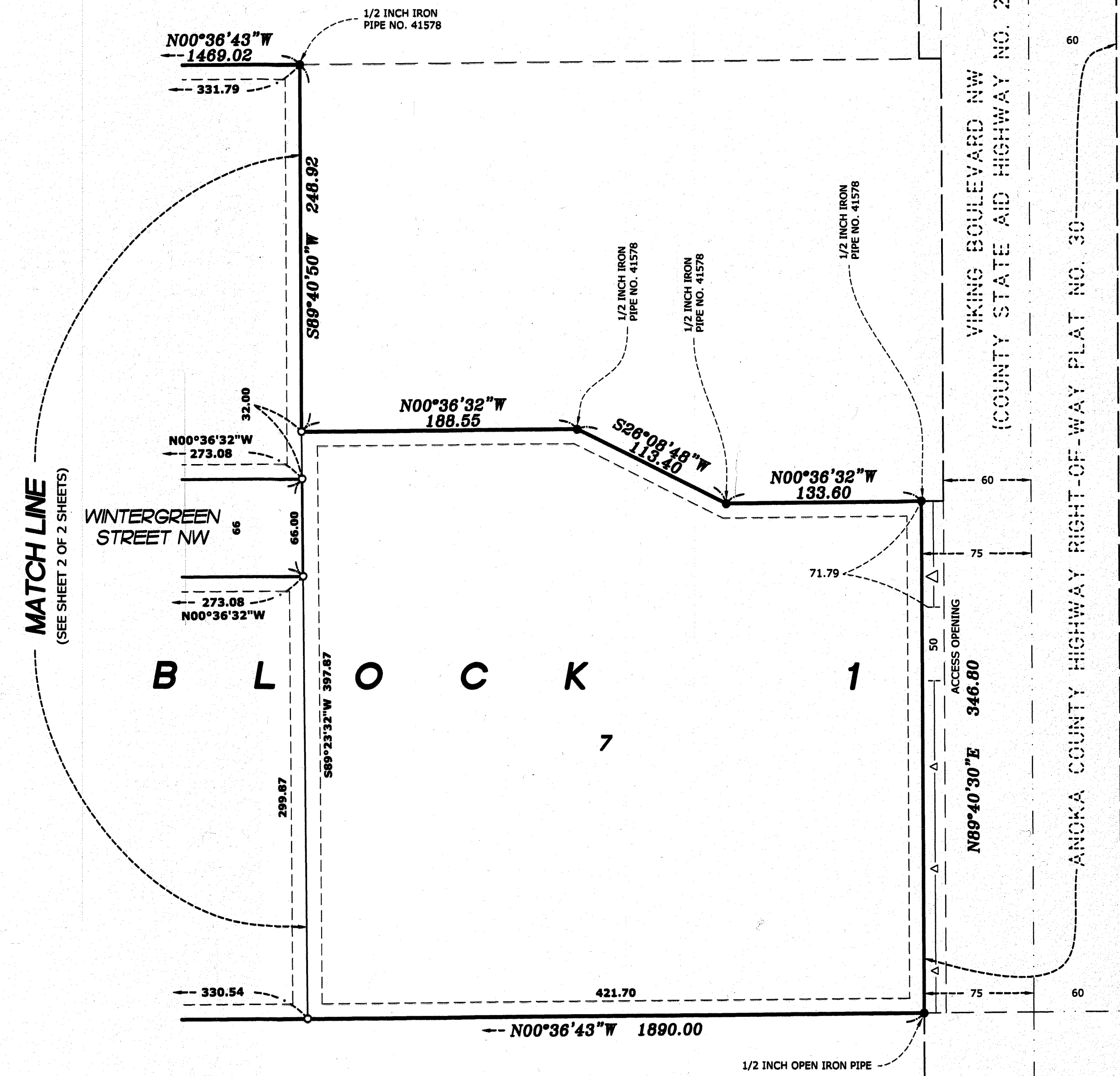


BEING 10 FEET IN WIDTH AND ADJOINING SIDE LOT LINES AND BEING 10 FEET IN WIDTH AND ADJOINING STREET AND REAR LOT LINES.



R AND M BURMAN
INDUSTRIAL PARK

CITY OF OAK GROVE
COUNTY OF ANOKA
SEC. 26, T33, R24



LEGEND

- DENOTES IRON MONUMENT FOUND AS LABELED
- DENOTES 1/2 INCH BY 14 INCH IRON PIPE SET, MARKED RLS NO. 41578
- △— DENOTES EXISTING RIGHT OF ACCESS PREVIOUSLY DEDICATED TO ANOKA COUNTY PER R AND M BURMAN INDUSTRIAL PARK.

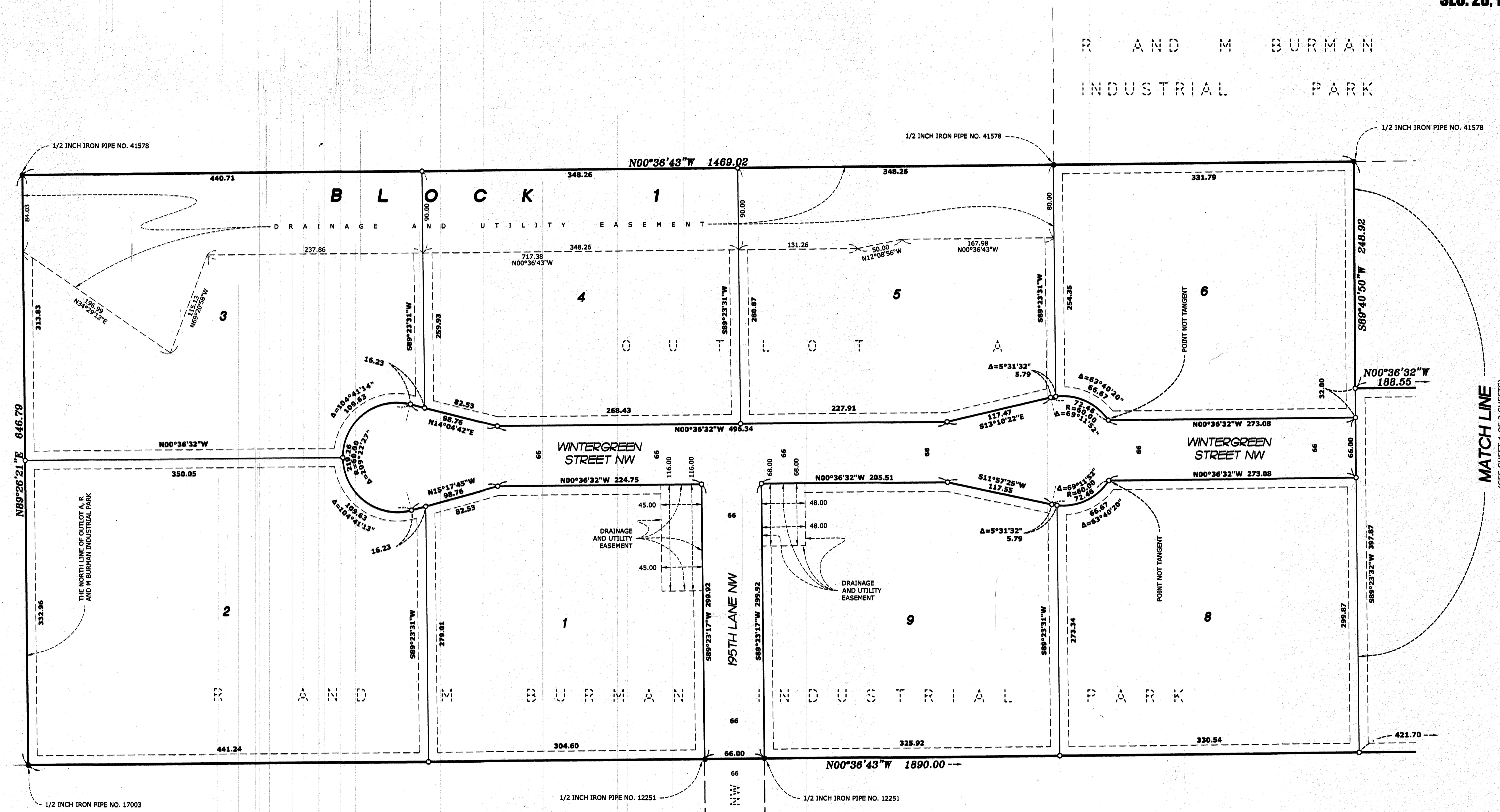
PRESERVE AT CEDAR CREEK

FOR THE PURPOSES OF THIS PLAT THE NORTH LINE OF OUTLOT A, R AND M BURMAN INDUSTRIAL PARK IS ASSUMED TO HAVE A BEARING OF NORTH 89 DEGREES 26 MINUTES 21 SECONDS EAST.

E. G. RUD & SONS, INC.
EST. 1977 Professional Land Surveyors
\$56

JP FARMS

CITY OF OAK GROVE
COUNTY OF ANOKA
SEC. 26, T33, R24



LEGEND

- DENOTES IRON MONUMENT FOUND AS LABELED
- DENOTES 1/2 INCH BY 14 INCH IRON PIPE SET, MARKED RLS NO. 41578

FOR THE PURPOSES OF THIS PLAT THE NORTH LINE OF OUTLOT A, R AND M BURMAN INDUSTRIAL PARK IS ASSUMED TO HAVE A BEARING OF NORTH 89 DEGREES 26 MINUTES 21 SECONDS EAST.

