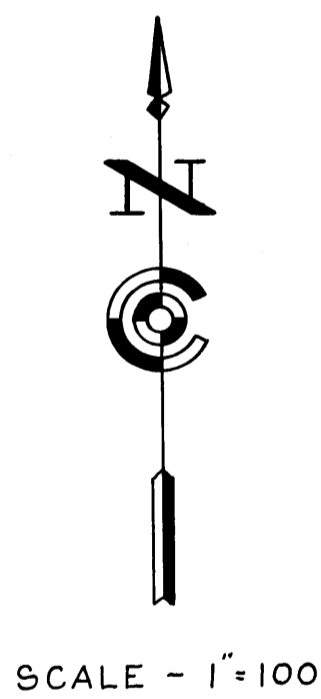
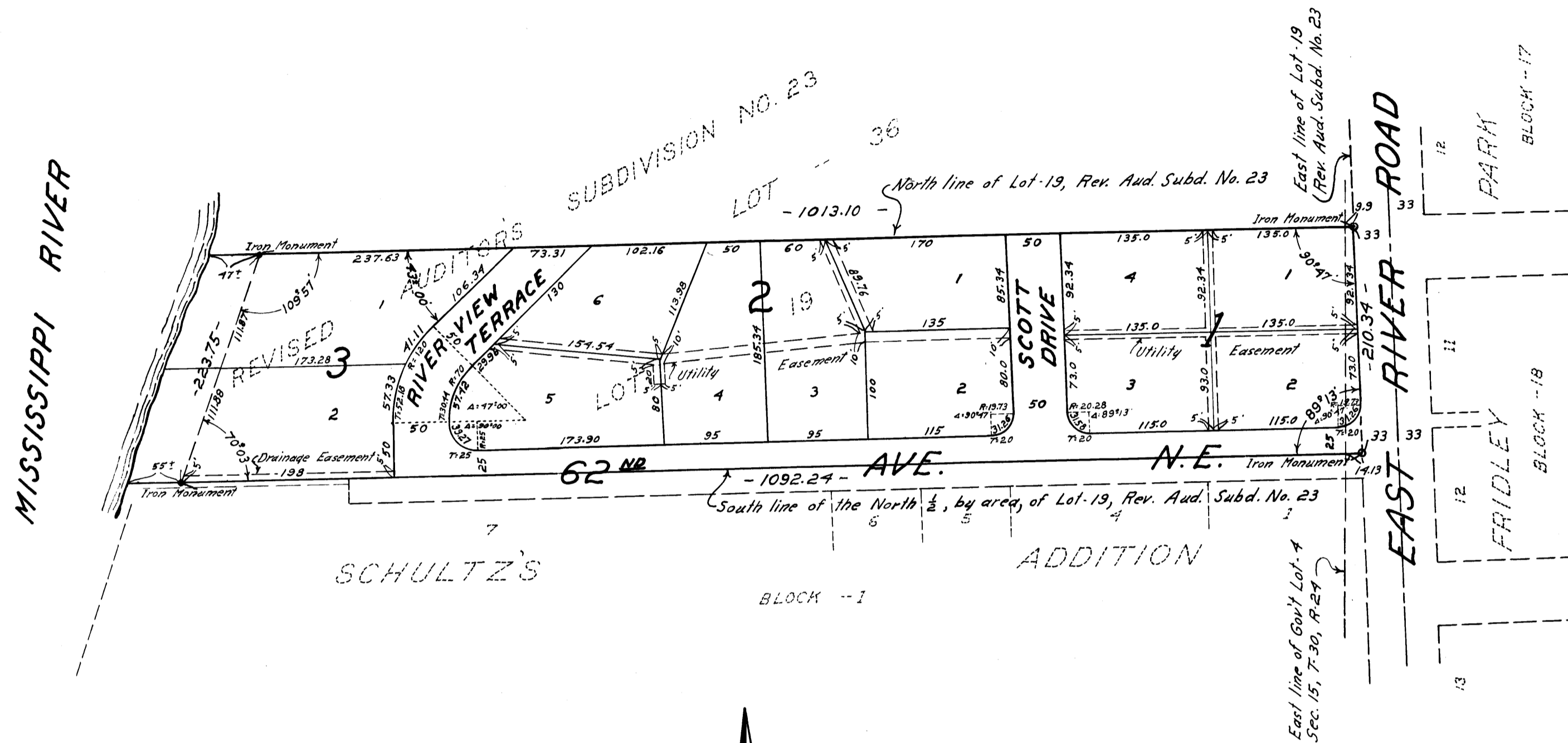


JULI-ANN ADDITION

VILLAGE OF FRIDLEY

CARTWRIGHT & OLSON
LAND SURVEYORS



KNOW ALL MEN BY THESE PRESENTS: That we Robert S. Hughes and Marie C. Hughes, his wife, owners and proprietors of the following described property situate in the County of Anoka, State of Minnesota to-wit: The North one-half (N $\frac{1}{2}$) of Lot nineteen (19), Revised Auditor's Subdivision Number twenty-three (23) according to the map or plat thereof on file and of record in the office of the Register of Deeds in and for Anoka County, Minnesota, have caused the same to be surveyed and platted as JULI-ANN ADDITION, and do hereby donate and dedicate to the public for the public use forever the avenue, terrace, and drive, as shown on the annexed plat also subject to utility easements as shown on the annexed plat. In witness whereof we have hereunto set our hands and seals on this 8th day of NOVEMBER A.D. 1956

In presence of: Ronald T. Coyne and Norman C. Hoium Signed: Robert S. Hughes
Ronald T. Coyne and Norman C. Hoium Signed: Marie C. Hughes

STATE OF MINNESOTA } S.S.
COUNTY OF ANOKA }
On this 8th day of NOVEMBER A.D. 1956 before me, a Notary Public, within and for said County and State personally appeared Robert S. Hughes and Marie C. Hughes, his wife, to me known to be the persons described in and who executed the foregoing instrument and they affirm and acknowledge that they executed the same as their own free act and deed.
Wynman Smith
Notary Public, Anoka County, Minnesota
WYMAN SMITH
My commission expires DECEMBER 26, 1956

I hereby certify that I have surveyed and platted the land described in the dedication on this plat as JULI-ANN ADDITION; that this plat is a correct representation of said survey; that all distances are correctly shown on said plat in figures denoting feet and decimals of a foot; that the monuments for the guidance of future surveys have been correctly placed in the ground as shown on said plat; that the topography of the land is correctly shown on said plat; that the outside boundaries of the land are correctly designated on said plat; and that there are no wet lands or public highways to be designated on said plat other than are shown thereon.
Robert S. Cartwright
Registered Land Surveyor, Minnesota Reg. No. 1983

STATE OF MINNESOTA } S.S.
COUNTY OF HENNEPIN }
Above certificate subscribed and sworn to before me, a Notary Public within and for said County and State on this 6th day of November A.D. 1956
Norman C. Hoium
Notary Public, Hennepin County, Minnesota
NORMAN C. HOIUM
My Commission Expires Oct. 14, 1957

17802
TAXES PAID
This 27th day of Dec, 1955
Hertha A. Russell
Auditor, Anoka County, Minn.
by Charles Bennett, Deputy
I HEREBY CERTIFY THAT TAXES PAID FOR THE YEAR 1955 ON THE LANDS DESCRIBED IN THIS PLAT
Charles Bennett

We hereby certify that the Village Council of the Village of Fridley Anoka County, Minnesota, duly accepted and approved the annexed plat of JULI-ANN ADDITION at a regular meeting thereof held this 8th day of November A.D. 1956
Village of Fridley, Anoka County, Minnesota.
J. E. Greig
Mayor
Ernest Madson
Village Manager