

Original

JULIEN'S ADDITION

VILLAGE OF SPRING LAKE PARK ANOKA COUNTY, MINNESOTA

CARTWRIGHT & OLSON
LAND SURVEYORS

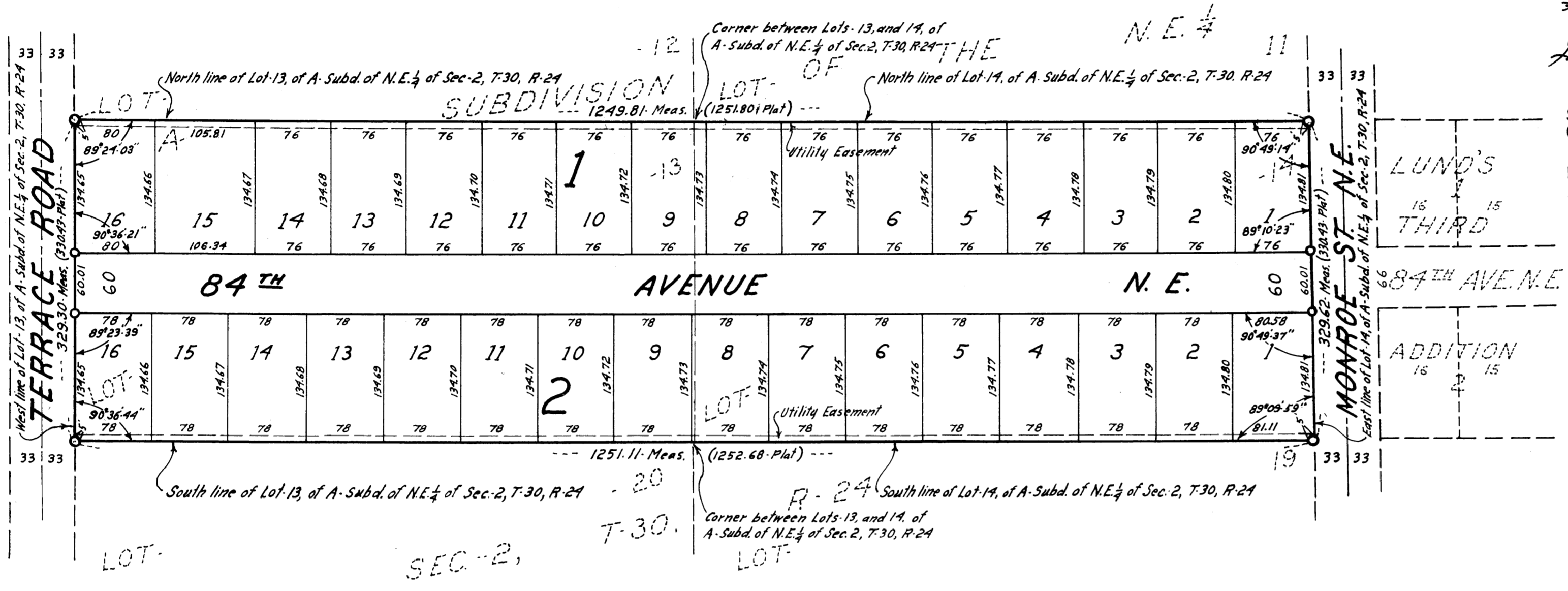
NORTH
SCALE 1" = 100'

Q-DENOTES IRON MONUMENT

KNOW ALL MEN BY THESE PRESENTS: THAT OAK INVESTMENT CO., A CO-PARTNERSHIP CONSISTING OF F.L. SIMON AND D.L. SIMON, OWNER AND PROPRIETOR OF THE FOLLOWING DESCRIBED PROPERTY SITUATED IN THE STATE OF MINNESOTA AND COUNTY OF ANOKA TO-WIT: LOTS 13 AND 14 IN A SUBDIVISION OF THE NORTHEAST QUARTER (NE $\frac{1}{4}$) OF SECTION TWO (2), TOWNSHIP THIRTY (30), RANGE TWENTY-FOUR (24); HAVE CAUSED THE SAME TO BE SURVEYED AND PLATTED AS JULIEN'S ADDITION AND DO HEREBY DONATE AND DEDICATE TO THE PUBLIC FOR PUBLIC USE FOREVER THE AVENUE AS SHOWN ON THE ANNEXED PLAT, ALSO SUBJECT TO EASEMENTS FOR UTILITY PURPOSES AS SHOWN ON THE ANNEXED PLAT. IN WITNESS WHEREOF, SAID F.L. SIMON AND D.L. SIMON, THE CO-PARTNERS OF SAID OAK INVESTMENT CO., A CO-PARTNERSHIP, HAVE HEREUNTO SET THEIR HANDS AND SEALS THIS 26th DAY OF March A.D. 1959.

IN THE PRESENCE OF: George W. Hanson AND T. N. Shaffer
AS TO F. L. SIMON
George W. Hanson AND T. N. Shaffer
AS TO D. L. SIMON

SIGNED: OAK INVESTMENT CO., A CO-PARTNERSHIP
BY F. L. Simon CO-PARTNER
BY D. L. Simon CO-PARTNER



STATE OF MINNESOTA } ss
COUNTY OF ANOKA

ON THIS 26th DAY OF March A.D. 1959, BEFORE ME A NOTARY PUBLIC WITHIN AND FOR SAID COUNTY AND STATE PERSONALLY APPEARED F.L. SIMON AND D.L. SIMON, TO ME PERSONALLY KNOWN, WHO BEING BY ME EACH DULY SWORN, DID SAY THAT THEY ARE THE CO-PARTNERS OF OAK INVESTMENT CO., THE CO-PARTNERSHIP NAMED IN THE FOREGOING INSTRUMENT; AND THAT SAID INSTRUMENT WAS SIGNED IN BEHALF OF SAID CO-PARTNERSHIP, AND SAID F. L. SIMON AND D. L. SIMON AFFIRM AND ACKNOWLEDGE THAT THEY EXECUTED THE SAME AS THE FREE ACT AND DEED OF SAID CO-PARTNERSHIP.

T. N. Shaffer
NOTARY PUBLIC, ANOKA COUNTY, MINNESOTA
MY COMMISSION EXPIRES Sept. 10, 1965

I HEREBY CERTIFY THAT I HAVE SURVEYED AND PLATTED THE PROPERTY DESCRIBED ON THIS PLAT AS JULIEN'S ADDITION: THAT THIS PLAT IS A CORRECT REPRESENTATION OF SAID SURVEY; THAT ALL DISTANCES ARE CORRECTLY SHOWN ON SAID PLAT IN FEET AND DECIMALS OF A FOOT; THAT THE MONUMENTS FOR THE GUIDANCE OF FUTURE SURVEYS HAVE BEEN CORRECTLY PLACED IN THE GROUND AS SHOWN ON SAID PLAT; THAT THE OUTSIDE BOUNDARIES OF THE LAND ARE CORRECTLY DESIGNATED ON SAID PLAT; THAT THE TOPOGRAPHY OF THE LAND IS CORRECTLY SHOWN ON SAID PLAT; AND THAT THERE ARE NO WET LANDS OR PUBLIC HIGHWAYS TO BE DESIGNATED ON SAID PLAT OTHER THAN AS SHOWN THEREON.

Harvey A. Cartwright
REGISTERED LAND SURVEYOR, MINN. REG. NO. 1983

STATE OF MINNESOTA) ss
COUNTY OF HENNEPIN)

ABOVE CERTIFICATE SUBSCRIBED AND SWORN TO BEFORE ME A NOTARY PUBLIC WITHIN AND FOR SAID COUNTY AND STATE ON THIS 23rd DAY OF March A.D. 1959.

Robert W. Stetten
NOTARY PUBLIC, HENNEPIN COUNTY, MINN.
MY COMMISSION EXPIRES Oct. 16, 1965

THIS PLAT WAS APPROVED AS TO FORM AND EXECUTION ON THIS 20th DAY OF April A.D., 1959.

Walter J. Fleming
VILLAGE ATTORNEY, VILLAGE OF SPRING LAKE PARK.

WE HEREBY CERTIFY THAT THE VILLAGE COUNCIL OF THE VILLAGE OF SPRING LAKE PARK, ANOKA COUNTY, MINNESOTA, DULY ACCEPTED AND APPROVED THE ANNEXED PLAT OF JULIEN'S ADDITION AT A REGULAR MEETING THEREOF HELD THIS 20th DAY OF April A.D. 1959.

I HEREBY CERTIFY THAT TAXES FOR THE YEAR 1958 ON THE LANDS DESCRIBED WITHIN ARE PAID
Walter J. Fleming
County Treasurer

TAXES PAID
This 5th day of May 1959
Kenneth W. Campbell
Auditor, Anoka County, Minn.
By Arthur E. Lutz deputy

VILLAGE OF SPRING LAKE PARK, ANOKA COUNTY, MINNESOTA
BY Nels A. Mueller acting
ITS MAYOR
BY John M. Bond
ITS CLERK

Office of REGISTRAR OF TITLES
STATE OF MINNESOTA
COUNTY OF ANOKA

I hereby certify that the within instrument was filed in this office on the 20th day of April 1959 at 4:30 o'clock P.M.

Robert W. Stetten
DEPUTY REGISTRAR OF TITLES