

JULIEN'S SECOND ADDITION

VILLAGE OF SPRING LAKE PARK
ANOKA COUNTY, MINNESOTA

CARTWRIGHT & OLSON
LAND SURVEYORS

KNOW ALL MEN BY THESE PRESENTS: THAT OAK INVESTMENT CO., A CO-PARTNERSHIP CONSISTING OF F.L. SIMON AND D.L. SIMON, OWNER AND PROPRIETOR OF THE FOLLOWING DESCRIBED PROPERTY SITUATED IN THE STATE OF MINNESOTA AND COUNTY OF ANOKA TO-WIT: THE EAST 200 FEET OF THE EAST 300 FEET OF LOT 3 IN A SUBDIVISION OF THE NORTHEAST QUARTER (NE $\frac{1}{4}$) OF SECTION TWO (2), TOWNSHIP THIRTY (30), RANGE TWENTY-FOUR (24); HAVE CAUSED THE SAME TO BE SURVEYED AND PLATTED AS JULIEN'S SECOND ADDITION AND DO HEREBY DONATE AND DEDICATE TO THE PUBLIC FOR PUBLIC USE FOREVER THE STREET AS SHOWN ON THE ANNEXED PLAT, ALSO SUBJECT TO EASEMENTS FOR UTILITY PURPOSES AS SHOWN ON THE ANNEXED PLAT. IN WITNESS WHEREOF, SAID F.L. SIMON AND D.L. SIMON, THE CO-PARTNERS OF SAID OAK INVESTMENT CO., A CO-PARTNERSHIP HAVE HEREUNTO SET THEIR HANDS AND SEALS THIS 25 DAY OF May A.D. 1959.

IN THE PRESENCE OF:

George V. Zygonis AS TO F.L. SIMON
F. L. Simon
George V. Zygonis AS TO D.L. SIMON
D. L. Simon

SIGNED: OAK INVESTMENT CO., A CO-PARTNERSHIP

BY F. L. Simon CO-PARTNER
BY D. L. Simon CO-PARTNER

STATE OF MINNESOTA)ss
COUNTY OF ANOKA

ON THIS 25 DAY OF May A.D. 1959, BEFORE ME A NOTARY PUBLIC WITHIN AND FOR SAID COUNTY AND STATE PERSONALLY APPEARED F.L. SIMON AND D.L. SIMON, TO ME PERSONALLY KNOWN, WHO BEING BY ME EACH DULY SWORN, DID SAY THAT THEY ARE THE CO-PARTNERS OF OAK INVESTMENT CO., THE CO-PARTNERSHIP NAMED IN THE FOREGOING INSTRUMENT; AND THAT SAID INSTRUMENT WAS SIGNED IN BEHALF OF SAID CO-PARTNERSHIP, AND SAID F.L. SIMON AND D.L. SIMON AFFIRM AND ACKNOWLEDGE THAT THEY EXECUTED THE SAME AS THE FREE ACT AND DEED OF SAID CO-PARTNERSHIP.

F. N. Shaffer
NOTARY PUBLIC, ANOKA COUNTY, MINNESOTA
MY COMMISSION EXPIRES Sept. 10, 1961

I HEREBY CERTIFY THAT I HAVE SURVEYED AND PLATTED THE PROPERTY DESCRIBED ON THIS PLAT AS JULIEN'S SECOND ADDITION THAT THIS PLAT IS A CORRECT REPRESENTATION OF SAID SURVEY; THAT ALL DISTANCES ARE CORRECTLY SHOWN ON SAID PLAT IN FEET AND DECIMALS OF A FOOT; THAT THE MONUMENTS FOR THE GUIDANCE OF FUTURE SURVEYS HAVE BEEN CORRECTLY PLACED IN THE GROUND AS SHOWN ON SAID PLAT; THAT THE OUTSIDE BOUNDARIES OF THE LAND ARE CORRECTLY DESIGNATED ON SAID PLAT; THAT THE TOPOGRAPHY OF THE LAND IS CORRECTLY SHOWN ON SAID PLAT; AND THAT THERE ARE NO WET LANDS OR PUBLIC HIGHWAYS TO BE DESIGNATED ON SAID PLAT OTHER THAN AS SHOWN THEREON.

Harry A. Cartwright
REGISTERED LAND SURVEYOR, MINN. REG. NO. 1983

STATE OF MINNESOTA)ss
COUNTY OF HENNEPIN)

AND STATE ON THIS 25th DAY OF March A.D. 1959.

Robert H. Sletten
NOTARY PUBLIC, HENNEPIN COUNTY, MINNESOTA
MY COMMISSION EXPIRES Oct. 16, 1965

THIS PLAT WAS APPROVED AS TO FORM AND EXECUTION ON THIS 20th DAY OF April A.D. 1959.

William J. Henn
VILLAGE ATTORNEY, VILLAGE OF SPRING LAKE PARK

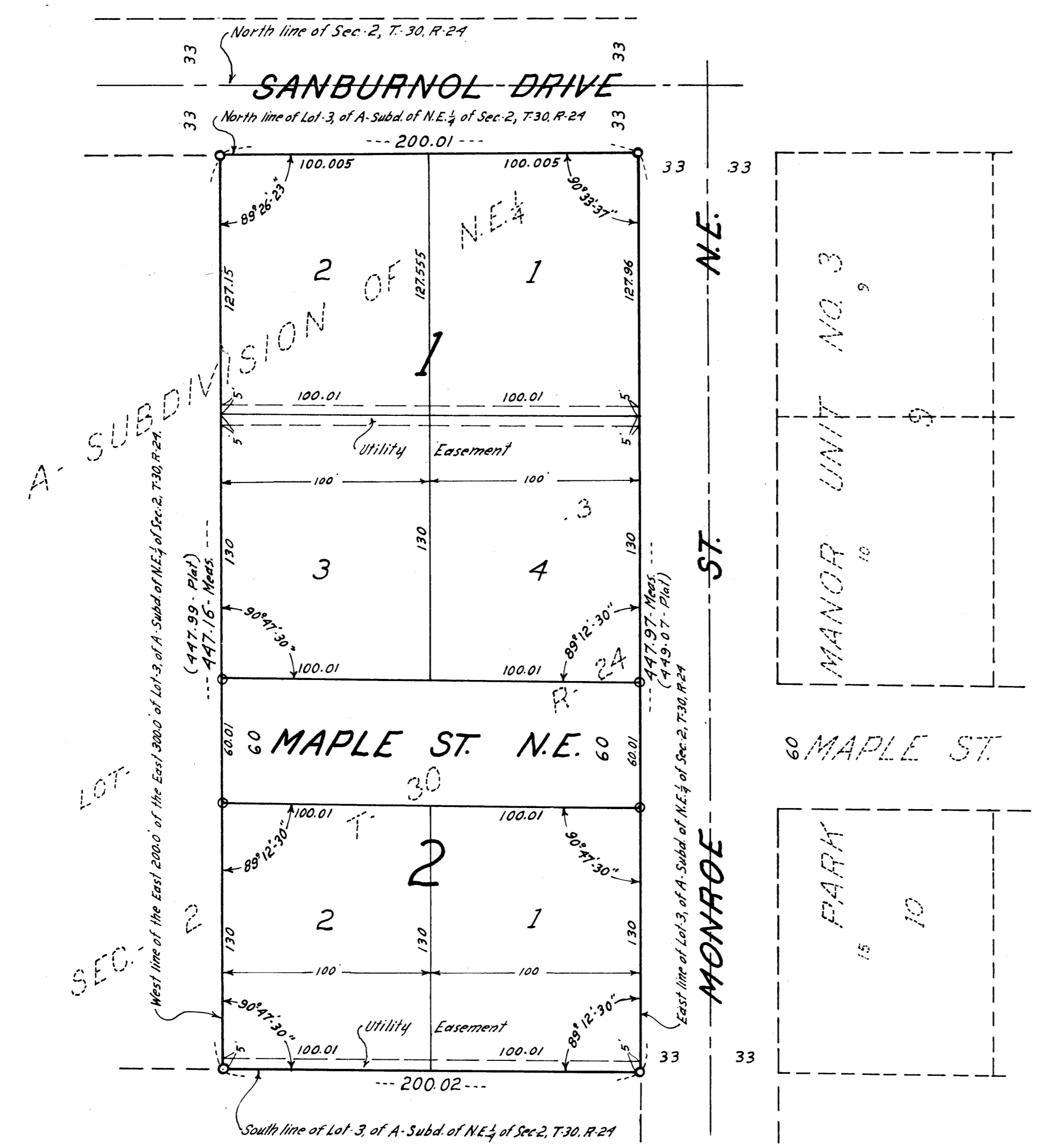
WE HEREBY CERTIFY THAT THE VILLAGE COUNCIL OF THE VILLAGE OF SPRING LAKE PARK, ANOKA COUNTY, MINNESOTA, DULY ACCEPTED AND APPROVED THE ANNEXED PLAT OF JULIEN'S SECOND ADDITION AT A REGULAR MEETING THEREOF HELD THIS 26th DAY OF April A.D. 1959.

TAXES PAID

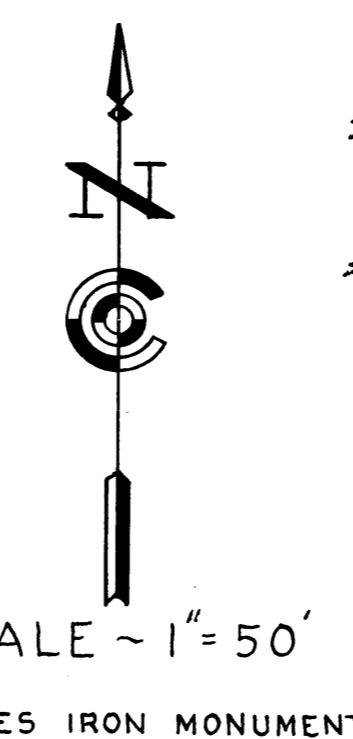
I HEREBY CERTIFY THAT TAXES FOR THE YEAR 1958 ON THE LANDS DESCRIBED WITHIN ARE PAID
Mattie B. Bowers
County Treasurer

This 5 day of May 1959
Ernest W. Campbell
Auditor, Anoka County, Minn.
By John E. Sage Deputy

VILLAGE OF SPRING LAKE PARK, ANOKA COUNTY, MINN.
BY Nels A. Moller ITS MAYOR
BY John M. ... ITS CLERK



Original



Office of REGISTRAR OF TITLES
STATE OF MINNESOTA
COUNTY OF ANOKA
I hereby certify that the within instrument was filed in this office on the 5 day of May 1959 A. D. 1959 at 4:30 o'clock P. M.
Vertrude A. Henn Registrar of Titles
By Ellen Boltchev Deputy Registrar of Titles