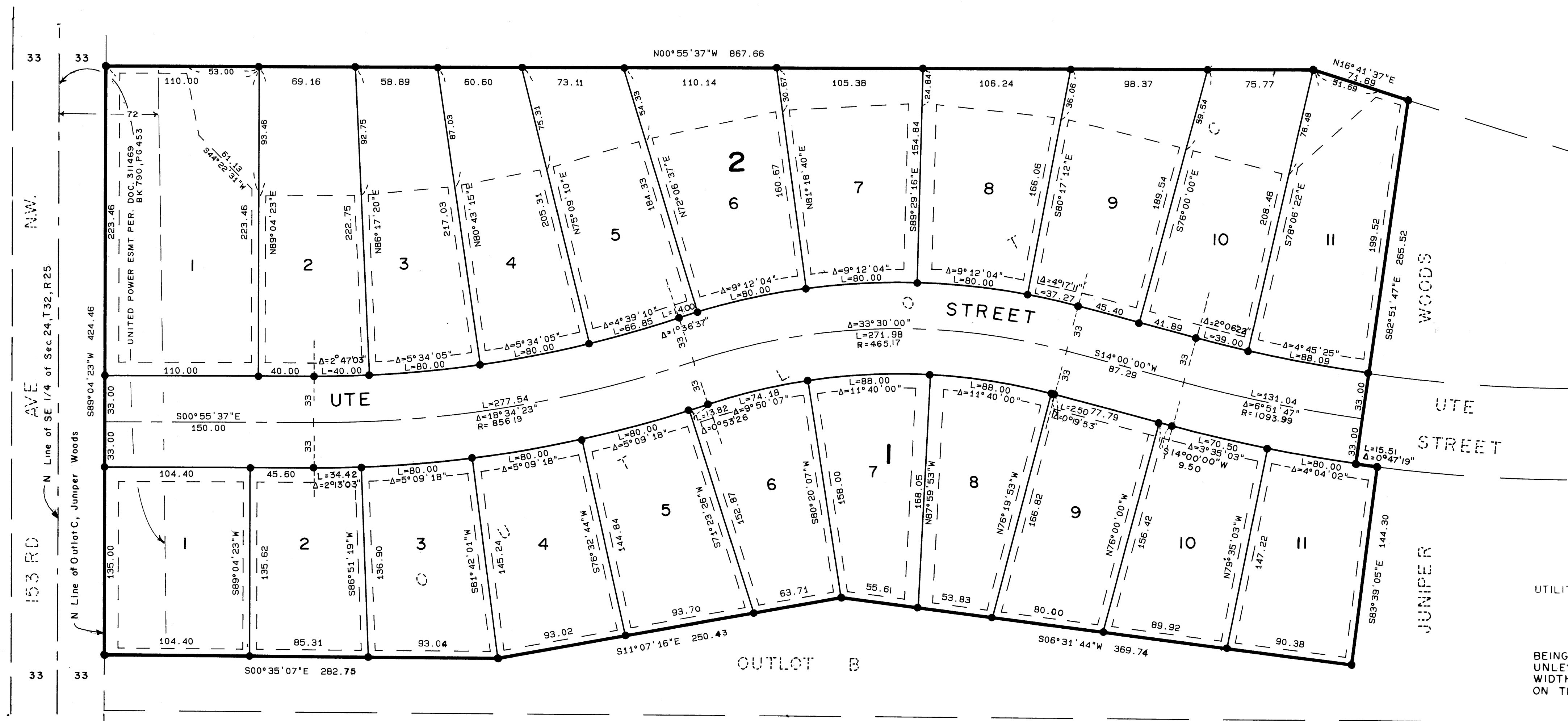


JUNIPER WOODS 2ND ADDITION

CITY OF RAMSEY
ANOKA COUNTY, MINNESOTA



0 50 100
SCALE IN FEET
1 INCH = 50 FEET

● DENOTES IRON MONUMENT

FOR THE PURPOSE OF THIS SURVEY THE NORTH LINE OF OUTLOT C, JUNIPER WOODS HAS AN ASSUMED BEARING OF S 89° 04' 23" W.

UTILITY AND DRAINAGE EASEMENTS ARE SHOWN THUS:

 BEING 5 FEET IN WIDTH AND ADJOINING LOT LINES, UNLESS OTHERWISE INDICATED AND 10 FEET IN WIDTH AND ADJOINING STREET LINES, AS SHOWN ON THE PLAT.

153 RD
N Line of SE 1/4 of Sec. 24, T. 32, R. 25
N Line of Outlot C, Juniper Woods
WACO ST. NW.

918513
OFFICE OF COUNTY RECORDER
STATE OF MINNESOTA, COUNTY OF ANOKA
I hereby certify that the within instrument was filed in this office for record on the DEC 27 A.D., 1990 at 4:45 o'clock P.M., and was duly recorded in book 42 of Plat page 53
By Ted J. Omdahl County Recorder
By Debra Kay Ege Deputy

"NO DELINQUENT TAXES AND TRANSFER ENTITLED"
December 27th 1990
Charles R. LeFebvre
Auditor, Anoka County
By Doreen Shultz Deputy

STATE OF MINNESOTA
COUNTY OF HENNEPIN
The foregoing Surveyor's Certificate was acknowledged before me this 27th day of July, 1990, by Paul A. Johnson, Land Surveyor.
John R. Cameron
Notary Public, Hennepin County, Minnesota
My Commission Expires Sept. 18, 1991



KNOW ALL MEN BY THESE PRESENTS: That BLH Development Company, a Minnesota corporation, owner and proprietor of the following described property situated in the County of Anoka, State of Minnesota to wit:

Outlot C, JUNIPER WOODS, according to the recorded plat thereof.

Has caused the same to be surveyed and platted as JUNIPER WOODS 2ND ADDITION and does hereby donate and dedicate to the public use forever the Street and the utility and drainage easements as shown on the plat.

In witness whereof said BLH Development Company, a Minnesota corporation, has caused these presents to be signed by its proper officer this 30th day of October, 1990.

SIGNED:
By: Dickman C. Knutson BLH DEVELOPMENT COMPANY, President
Dickman C. Knutson

STATE OF MINNESOTA
COUNTY OF HENNEPIN
The foregoing instrument was acknowledged before me this 30th day of October, 1990, by Dickman C. Knutson, President of BLH Development Company, a Minnesota corporation, on behalf of the corporation.
Thomas A. McEnty
Notary Public, Hennepin County, Minnesota
My Commission Expires April 10, 1992



I hereby certify that I have surveyed and platted the property described on this plat as JUNIPER WOODS 2ND ADDITION; that this plat is a correct representation of said survey; that all distances are correctly shown in feet and hundredths of a foot; that all monuments have been correctly placed in the ground as shown; that the outside boundary lines are correctly designated and there are no wetlands or public highways to be designated on said plat other than as shown.

By Paul A. Johnson
Paul A. Johnson, Land Surveyor, Minn. Lic. No. 10938

I HEREBY CERTIFY THAT THE TAXES PAYABLE IN THE YEAR 1990 ON THE LANDS DESCRIBED WITHIN ARE PAID
Donald C. Bailey
Anoka County Treasurer

By: Mary R. Reimann, Mayor
By: David R. Forth, Clerk

This plat has been checked and approved this 27th day of Dec., 1990.

McCOMBS FRANK ROOS ASSOCIATES, INC. ENGINEERS AND SURVEYORS
By: MERLYN D. ANDERSON, Anoka County Surveyor
By: Jerry D. [unclear] deputy

