

KATCHMARK'S FIRST ADDITION

City of Coon Rapids, Anoka County

KNOW ALL PERSONS BY THESE PRESENTS that Theodore E. Katchmark and Erma J. Katchmark, husband and wife, owners and proprietors of the following described property in the City of Coon Rapids, Anoka County, Minnesota:
Lot 5, Auditor's Subdivision No. 127, according to the plat thereof now on file and of record in the office of the County Recorder in and for Anoka County.

have caused the same to be surveyed and platted as KATCHMARK'S FIRST ADDITION and do hereby donate and dedicate to the public for public use forever Minnesota Trunk Highway No. 242 (Main Street) and 124th Lane Northwest and the drainage and utility easements shown on the plat.

In witness whereof said Theodore E. Katchmark and Erma J. Katchmark have caused these presents to be signed this 22 day of October, 1987.

Signed:

Theodore E. Katchmark
Theodore E. Katchmark

Erma J. Katchmark
Erma J. Katchmark

STATE OF MINNESOTA)
COUNTY OF Anoka)

The foregoing instrument was acknowledged before me this 22 day of October, 1987, by Theodore E. Katchmark and Erma J. Katchmark, husband and wife.

James H. Eckert
Notary Public, Anoka County, Minnesota
My Commission Expires Aug 26, 1992

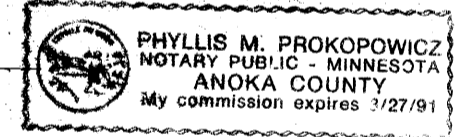
I, Ron Murphy, hereby certify that I have surveyed and platted the property described in the dedication of this plat as KATCHMARK'S FIRST ADDITION, that this plat is a correct representation of said survey; that all distances are correctly shown on the plat in figures denoting feet and hundredths of a foot; that all monuments have been correctly placed in the ground as shown; that the outside boundary lines are correctly designed on the plat; and that there are no wet lands or public highways other than as shown thereon.

Ron Murphy
Ron Murphy, Land Surveyor
Minnesota Registration No. 10832

STATE OF MINNESOTA)
COUNTY OF ANOKA)

The foregoing instrument was acknowledged before me this 16th day of SEPTEMBER, 1987, by Ron Murphy, Land Surveyor.

Phyllis M. Prokopowicz
Notary Public Anoka County, Minnesota
My Commission Expires March 27, 1991



This plat of KATCHMARK'S FIRST ADDITION was approved by the Planning and Zoning Commission of the City of Coon Rapids at a regular meeting thereof held this 16th day of July, 1987.

CITY OF COON RAPIDS

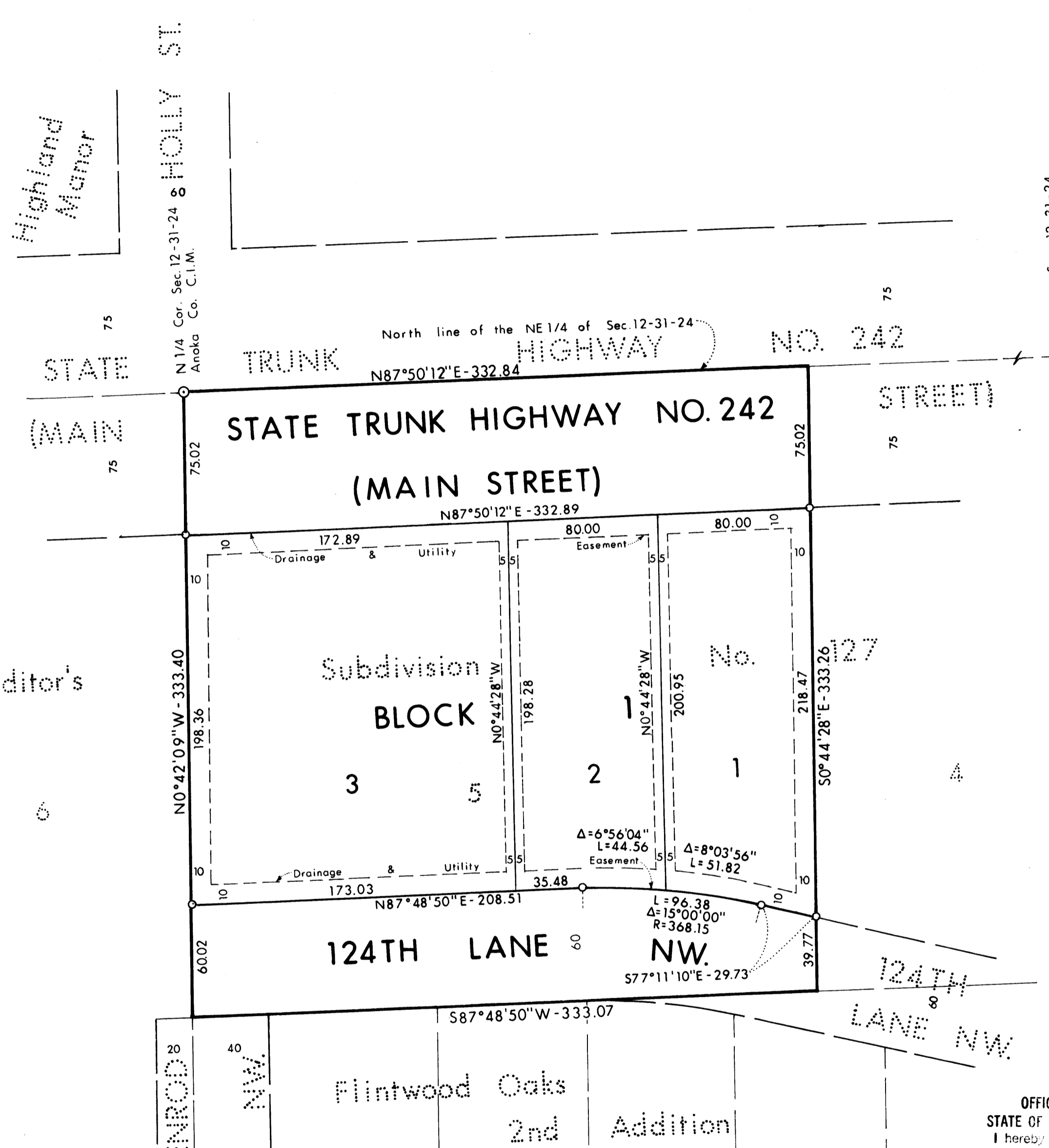
Donna M. Naewe
Chairman
Shirley J. Hoff
Clerk

We hereby certify that the City Council of the City of Coon Rapids, Anoka County, Minnesota duly accepted and approved the annexed plat of KATCHMARK'S FIRST ADDITION at a regular meeting thereof held this 29th day of November, 1987. If applicable, the written comments and recommendations of the Commissioner of Transportation and the County Highway Engineer have been received by the City or the prescribed 30 day period has elapsed without receipt of such comments and recommendations, as provided by Minnesota Statutes, Section 505.03, Subdivision 2.

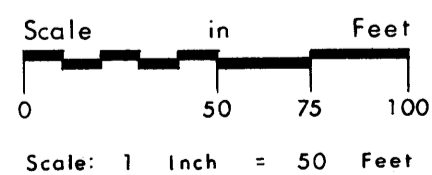
CITY COUNCIL OF COON RAPIDS, MINNESOTA
Robert B Lewis
Mayor
Betty Backes, CMC
City Clerk

Checked and approved this 10th day of Jan, 1988.

Wm D. Ancker
Anoka County Surveyor



For purposes of this plat the North line of the NE 1/4 of Sec. 12-31-24 is assigned a bearing of N87°50'12"E.



0 Denotes iron monument set and capped RLS 10832.

"NO DELINQUENT TAXES AND TRANSFER ENTITLED"

February 1st 1988
Charles C. Seebore
Auditor, Anoka County
By Arnold Schultz
Deputy

OFFICE OF COUNTY RECORDER

STATE OF MINNESOTA, COUNTY OF ANOKA

I hereby certify that the within instrument was duly recorded on the 7th day of February, 1988, at 4:10 o'clock P.M. and was duly recorded in book 38 of Plats, page 46.

Jack J. Randall
County Recorder
By Debra Kay Edge
Clerk

February 1st 1988
Donald C. Barclay
Anoka County Treasurer
By J. Henry - Deputy