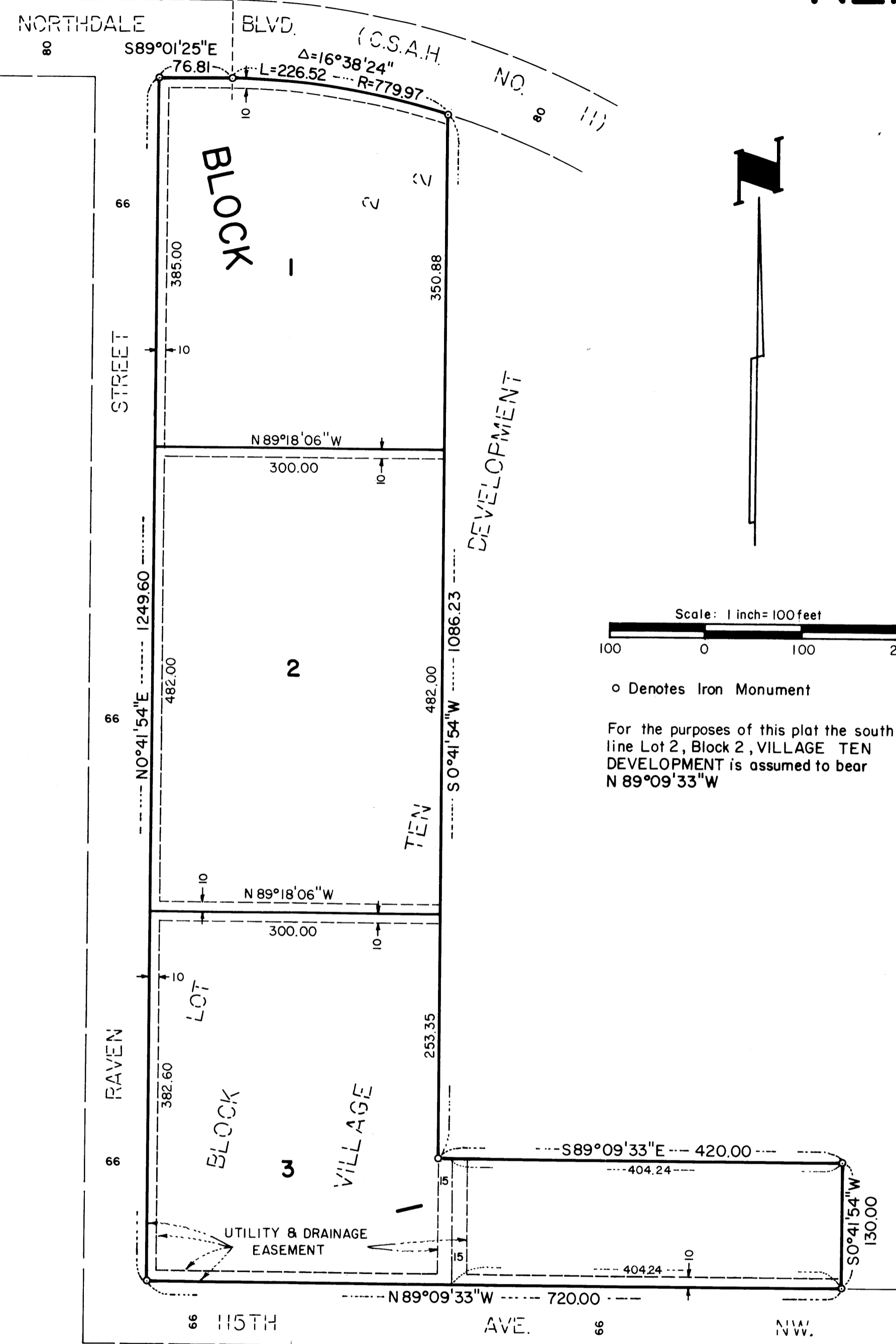


# KERRY COURT ADDITION

CITY OF COON RAPIDS, COUNTY OF ANOKA

LOT SURVEYS COMPANY, INC.  
LAND SURVEYORS



KNOW ALL MEN BY THESE PRESENTS: That Schmitz Kornovich, Inc., a Minnesota corporation, owner and proprietor, and Security Financial Banking and Savings, FSB, a banking corporation under the laws of the United States of America, mortgagee, of the following described property situated in the County of Anoka, State of Minnesota, to-wit:

That part of Lot 2, Block 2, Village Ten Development, lying north of a line drawn perpendicular to the West line of said Lot 2 from a point on said West line distant 867.00 feet south along said West line from the Northwest corner of said Lot 2; and lying south of a line drawn perpendicular to the West line of said Lot 2 from a point on said West line distant 385.00 feet south along said West line from the Northwest corner of said Lot 2.

and Gaughan Land Inc., a Minnesota corporation, owner and proprietor, and Schmitz Kornovich, Inc., a Minnesota corporation, contract purchaser, of the following described property situated in the County of Anoka, State of Minnesota, to-wit:

That part of Lot 2, Block 2, Village Ten Development, lying south of a line drawn perpendicular to the West line of said Lot 2 from a point on said West line distant 867.00 feet south along said West line from the Northwest corner of said Lot 2; and lying north of a line drawn perpendicular to the West line of said Lot 2 from a point on said West line distant 385.00 feet south along said West line from the Northwest corner of said Lot 2.

Have caused the same to be surveyed and platted as KERRY COURT ADDITION and do hereby donate and dedicate to the public for public use forever the easements for utility and drainage purposes as shown on the plat. In witness whereof said Schmitz Kornovich, Inc., a Minnesota corporation, has caused these presents to be signed by its proper officers this 11<sup>TH</sup> day of NOVEMBER, 1988. In witness whereof said Gaughan Land Inc., a Minnesota corporation, has caused these presents to be signed by its proper officer this 12<sup>TH</sup> day of OCTOBER, 1988. In witness whereof said Security Financial Banking and Savings, FSB, a banking corporation under the laws of the United States of America, has caused these presents to be signed by its proper officers this 16<sup>TH</sup> day of NOVEMBER, 1988.

Signed: Schmitz Kornovich, Inc.  
Lonnie Kornovich, SECRETARY  
Gaughan Land Inc.  
Alan J. Hamel, president  
SECURITY FINANCIAL BANKING AND SAVINGS, FSB  
Dale Thompson as Vice President  
Donna Allen as Asst. V. President  
Ralph Schmitz, PRESIDENT

835703  
OFFICE OF COUNTY CLERK  
STATE OF MINNESOTA  
I hereby certify that the foregoing instrument was filed in the public records on the DEC 27 day of 1988 at 10 o'clock A. M. in the County of Anoka at Book 40 of Plat 14.

I HEREBY CERTIFY THAT THE TAXES PAYABLE BY THE LANDS DESCRIBED HEREIN ARE PAID.  
Donnell Bailey  
Anoka County Treasurer  
J. Henry Deputy

"NO DELINQUENT TAXES AND TRANSFER ENTLRED"  
December 15<sup>th</sup> 1988  
Charles R. Reuber  
Auditor, Anoka County  
Donnell Bailey  
Deputy

State of Minnesota  
County of Stearns The foregoing instrument was acknowledged before me this 12<sup>th</sup> day of October, 1988, by Alan J. Hamel, president of Gaughan Land Inc., a Minnesota corporation, on behalf of said corporation.

State of Minnesota  
County of Stearns The foregoing instrument was acknowledged before me this 16<sup>th</sup> day of Nov, 1988, by Dale Thompson as Vice President and Donna Allen as Asst. Vice President, of Security Financial Banking and Savings, FSB, a corporation under the laws of the United States of America, on behalf of said corporation.

I hereby certify that I have surveyed and platted the property described on this plat as KERRY COURT ADDITION; that this plat is a correct representation of said survey; that the distances are correctly shown on said plat in feet and hundredths of a foot; that all monuments have been correctly placed in the ground as shown on said plat; that the outside boundary lines are correctly designated on said plat; and that there are no wetlands to public highways to be designated other than as shown thereon.

State of Minnesota  
County of Hennepin The foregoing instrument was acknowledged before me this 7<sup>th</sup> day of October, 1988, by Raymond A. Prasch, Registered Land Surveyor.

We hereby certify that the City Council of the City of Coon Rapids, Anoka County, Minnesota, duly accepted and approved the plat of KERRY COURT ADDITION, at a regular meeting thereof held this 21 day of NOVEMBER, 1988.

By Robert B Lewis Mayor  
By Betty Backes, One Clerk  
Checked and approved this 15<sup>th</sup> day of Dec, 1988.

The plat of KERRY COURT ADDITION was approved by the Planning and Zoning Commission of the City of Coon Rapids at a regular meeting thereof held this 15<sup>th</sup> day of SEPTEMBER, 1988. If applicable, the written comments and recommendations of the Commissioner of Transportation and the County Highway Engineer have been received by the City or the prescribed 30 day period has elapsed without receipt of such comments and recommendations as provided by Minn. Statutes, Section 505.03, Subd. 2.

Marj D. Anderson Anoka County Surveyor  
Charles R. Reuber Auditor, Anoka County  
Donna M. Mueve Chairman