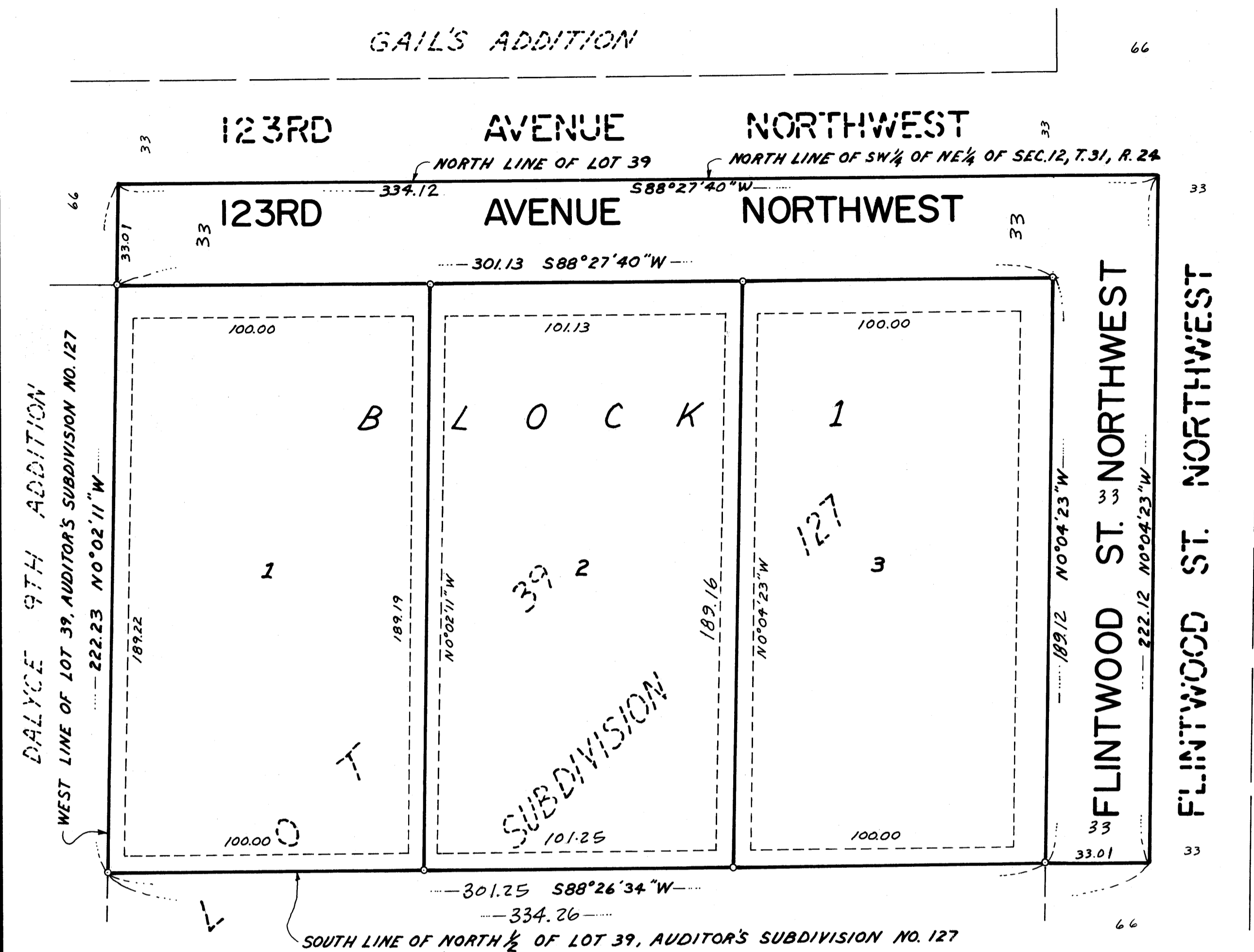
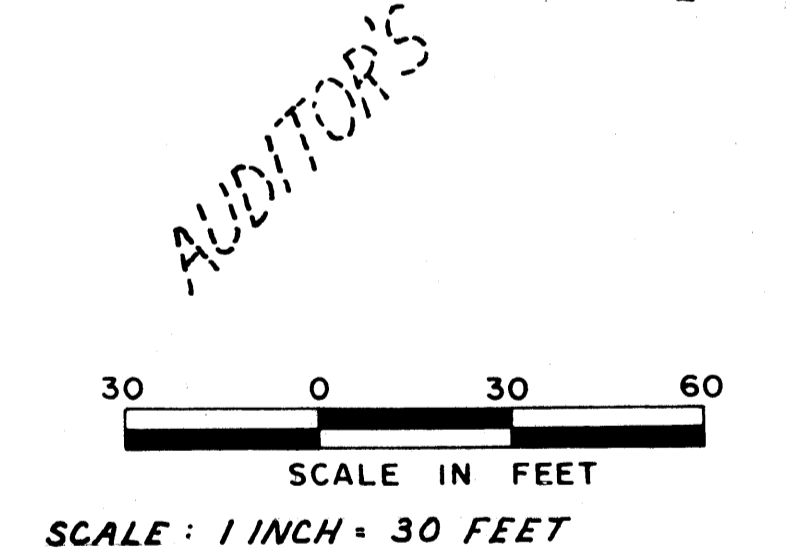


KING ADDITION

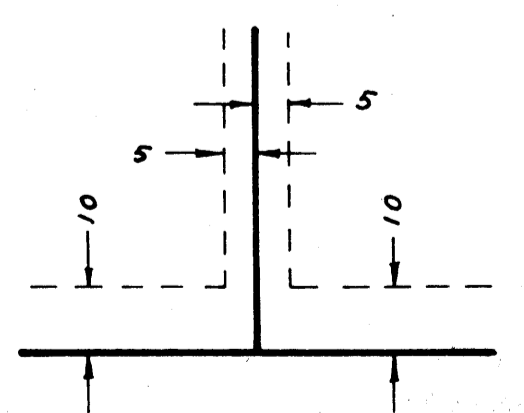
City of Coon Rapids
Anoka County, Minn.



DALYCE 9TH ADDITION
WEST LINE OF LOT 39, AUDITOR'S SUBDIVISION NO. 127
222.23 N0°02'11"W



UTILITY AND DRAINAGE EASEMENTS
SHOWN THUS:



BEING 10 FEET IN WIDTH ADJOINING
STREET LINES AND 5 FEET IN WIDTH
ADJOINING LOT LINES, UNLESS OTHER-
WISE SHOWN ON THE PLAT.

○ DENOTES IRON MONUMENT
BEARINGS ARE ON AN ASSUMED
DATUM

769154
OFFICE OF COUNTY RECORDER
STATE OF MINNESOTA, COUNTY OF ANOKA
I hereby certify that the within instru-
ment was filed in this office for record
on the JUL 10 1987 A.D., 19
9 o'clock A.M., and was duly recorded
in book 380 of PLATS page 2

Fred J. Crandall
County Recorder
By J. E. Holmquist
Deputy

KNOW ALL MEN BY THESE PRESENTS: That Alfred Harold King and Isolde King, husband and wife, fee owners, and Fleet Mortgage Corporation, a Wisconsin corporation, mortgagee of the following described property, situated in the County of Anoka, State of Minnesota, to wit:

The north half of Lot 39, AUDITOR'S SUBDIVISION NO. 127, according to the recorded plat thereof, Anoka County, Minnesota. Have caused the same to be surveyed and platted as KING ADDITION, and do hereby donate and dedicate to the public for public use forever the street, the avenue and the easements for utility and drainage purposes as shown on the plat.

In witness whereof said Alfred Harold King and Isolde King, husband and wife, have hereunto set their hands this 7th day of July, 1987.

SIGNED: Alfred Harold King Isolde King
Alfred Harold King Isolde King

STATE OF MINNESOTA
COUNTY OF ANOKA

The foregoing instrument was acknowledged before me this 7th day of July, 1987, by Alfred Harold King and Isolde King, husband and wife.

[Signature]
Notary Public, Anoka County, Minnesota
My commission expires 9-10-87

In witness whereof said Fleet Mortgage Corporation, a Wisconsin corporation has caused these presents to be signed by its proper officers this 1st day of July, 1987.

SIGNED: [Signature] Assistant
By Joan Weerts, its Vice-President. By Dolores A. Strzok, its Assistant Secretary.
STATE OF Wisconsin
COUNTY OF Milwaukee

The foregoing instrument was acknowledged before me this 1st day of July, 1987, by Joan Weerts the Assistant Vice-President and by Dolores A. Strzok the Assistant Secretary of Fleet Mortgage Corporation, a Wisconsin corporation on behalf of said corporation.

Christine M. [Signature]
Notary Public, Milwaukee County, Wisconsin
My commission expires 9/29/80

I hereby certify that I have surveyed and platted the property described on this plat as KING ADDITION; that this plat is a true and correct representation of said survey; that all distances are correctly shown on the plat in feet and hundredths of a foot; that all monuments have been correctly placed in the ground as shown; that the outside boundary lines are correctly designated on the plat and that there are no wet lands or public highways to be designated on said plat.

[Signature]
Gary L. Gabriel, Land Surveyor
Minnesota License No. 9066

STATE OF MINNESOTA
COUNTY OF HENNEPIN The foregoing instrument was acknowledged before me this 20th day of January, 1987, by Gary L. Gabriel, Land Surveyor.

[Signature]
Notary Public, Hennepin County, Minnesota
My commission expires April 1, 1988

The foregoing plat of KING ADDITION was approved and accepted by the city planning commission of Coon Rapids, Minnesota at a regular meeting thereof held this 1st day of October, 1986.

CITY PLANNING COMMISSION OF COON RAPIDS, MINNESOTA
By [Signature] Chairman

The foregoing plat of KING ADDITION was approved and accepted by the city council of Coon Rapids, Minnesota at a regular meeting thereof held this 3rd day of March, 1987.

CITY COUNCIL OF COON RAPIDS, MINNESOTA
By [Signature] Mayor-pro tem By [Signature] Clerk

Checked and approved this 7th day of July, 1987.

[Signature]
Anoka County Surveyor

"NO DELINQUENT TAXES
AND TRANSFER ENTERED"

July 10 1987
[Signature]
Auditor, Anoka County
By [Signature] Deputy

I HEREBY CERTIFY THAT THE TAXES
PAYABLE IN THE YEAR 1987 ON THE
LANDS DESCRIBED WITHIN ARE PAID
[Signature]
Anoka County Treasurer

DEMARS - GABRIEL
LAND SURVEYORS, INC.