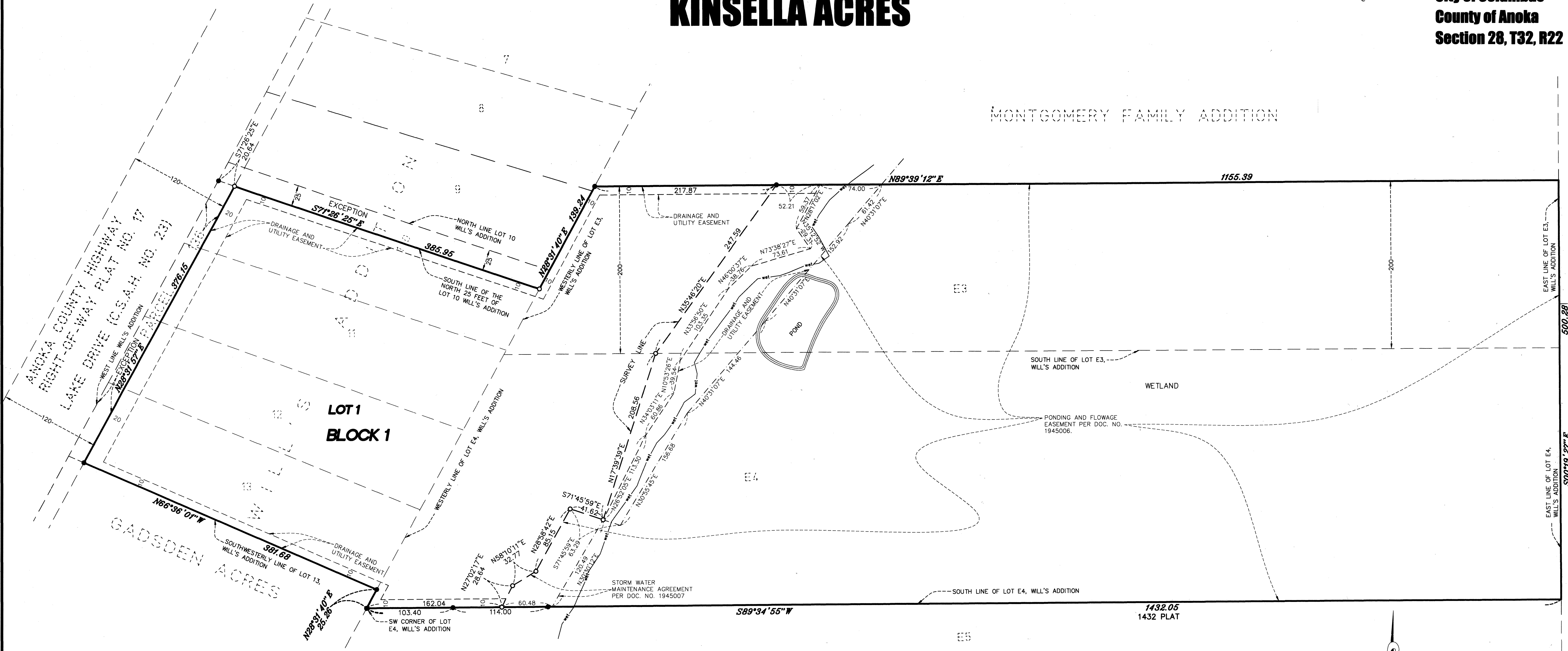


# KINSELLA ACRES

City of Columbus  
County of Anoka  
Section 28, T32, R22

MONTGOMERY FAMILY ADDITION



KNOW ALL PERSONS BY THESE PRESENTS: That Kinsella Properties, LLP, a Minnesota limited liability partnership, owner of the following described property:

Lot 10, except the Northerly 25 feet, and Lots 11, 12, and 13, all in WILL'S ADDITION, Anoka County, Minnesota, except parcel 136, ANOKA COUNTY HIGHWAY RIGHT-OF-WAY PLAT NO. 17.

And  
The South 200 feet of Lot E3 and all of Lot E4, WILL'S ADDITION, Anoka County, Minnesota.

Has caused the same to be surveyed and platted as KINSELLA ACRES and does hereby dedicate to the public for public use the drainage and utility easements as shown by this plat.

In witness whereof said Kinsella Properties, LLP, a Minnesota limited liability partnership, has caused these presents to be signed by its proper partner this 16th day of December, 2015.

KINSELLA PROPERTIES, LLP  
*Michael J. Nelson*  
Michael J. Nelson, Vice President

STATE OF MINNESOTA  
COUNTY OF Anoka

This instrument was acknowledged before me this 16th day of December, 2015 by Michael J. Nelson, Vice President of Kinsella Properties, LLP, a Minnesota limited liability partnership, on behalf of the partnership.

*Nicole A. Johnson*  
Nicole A. Johnson  
Notary Public, Anoka County, Minnesota  
My Commission Expires Jan 31, 2020

I, Blake L. Rivard do hereby certify that this plat was prepared by me or under my direct supervision; that I am a duly Licensed Land Surveyor in the State of Minnesota; that this plat is a correct representation of the boundary survey; that all mathematical data and labels are correctly designated on this plat; that all monuments depicted on this plat have been, or will be correctly set within one year; that all water boundaries and wet lands, as defined in Minnesota Statutes, Section 505.01, Subd. 3, as of the date of this certificate are shown and labeled on this plat; and all public ways are shown and labeled on this plat.

Dated this 1st day of DECEMBER, 2015

*Blake L. Rivard*  
Blake L. Rivard, Licensed Land Surveyor  
Minnesota License No. 19421

STATE OF MINNESOTA  
COUNTY OF Anoka  
This instrument was acknowledged before me this 1st day of December, 2015 by Blake L. Rivard.

*Nicole A. Johnson*  
Nicole A. Johnson  
Notary Public, Anoka County, Minnesota  
My Commission Expires Jan 31, 2020

CITY COUNCIL, CITY OF COLUMBUS, MINNESOTA  
This plat of KINSELLA ACRES was approved and accepted by the City Council of the City of Columbus, Minnesota at a regular meeting thereof held this 23rd day of September, 2015, and said plat is in compliance with the provisions of Minnesota Statutes, Section 505.03, Subd. 2.

By *Dan Ruff* Mayor By *Elyse Munko* Clerk

County Surveyor  
I hereby certify that in accordance with Minnesota Statutes, Section 505.021, Subd. 11, this plat has been reviewed and approved this 23rd day of DECEMBER, 2015.

*Larry D. Holm*  
Larry D. Holm  
Anoka County Surveyor

County Auditor/Treasurer  
Pursuant to Minnesota Statutes, Section 505.021, Subd. 9, taxes payable in the year 2015 on the land hereinbefore described have been paid. Also, pursuant to Minnesota Statutes, Section 272.12, there are no delinquent taxes and transfer entered this 23 day of December, 2015.

*Jonell M. Sawyer*  
Jonell M. Sawyer  
Property Tax Administrator

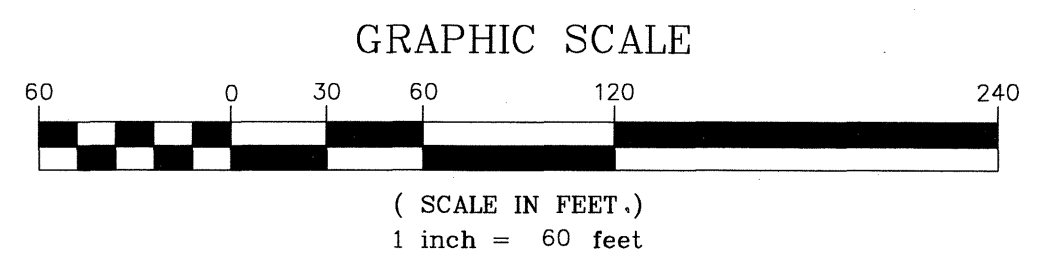
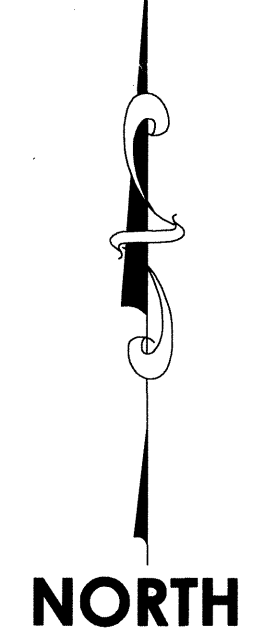
By *Abst* Deputy

County Recorder/Registrar of Titles  
County of Anoka, State of Minnesota

I hereby certify that this plat of KINSELLA ACRES was filed in the office of the County Recorder/Registrar of Titles for public record on this 23 day of December, 2015, at 9:18 o'clock A.M. and was duly recorded in Book 78 Page 46 as Document Number 2126085.001

*Jonell M. Sawyer*  
Jonell M. Sawyer  
County Recorder/Registrar of Titles

By *Abst* Deputy



FOR THE PURPOSES OF THIS PLAT THE SOUTHWESTERLY LINE OF LOT 13, WILL'S ADDITION, IS ASSUMED TO HAVE A BEARING OF NORTH 66 DEGREES 36 MINUTES 01 SECONDS WEST.

- DENOTES IRON MONUMENT FOUND AS LABELED
- DENOTES 1/2 INCH BY 14 INCH IRON MONUMENT SET, MARKED RLS# 19421
- wet — DENOTES EDGE OF WETLAND AS DELINEATED IN MAY 2015 BY JACOBSON ENVIRONMENTAL, PLLC.



\$56.00