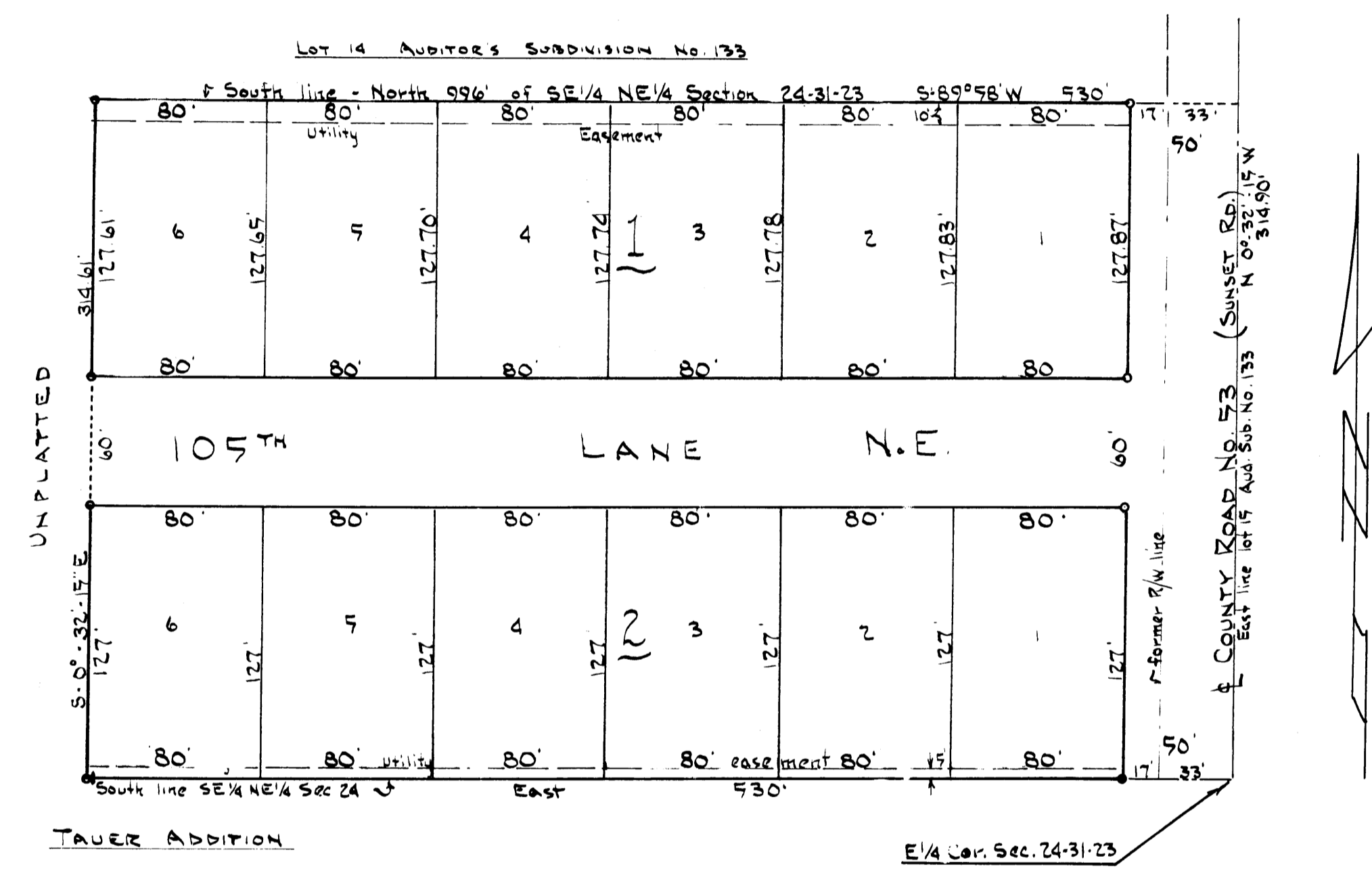


KIRK'S ADDITION

VILLAGE OF BLAINE - ANOKA CO.

SCALE 1" = 60'
o INDICATES IRON MON'T.

JAMES L. KURTH
SURVEYOR



Know all men by these presents that Anna G. Kirkpatrick, a single person, owner of the following described property situated in the County of Anoka, State of Minnesota to wit: The easterly 530.0 feet of Lot 15, Auditor's Subdivision Number 133, has caused the same to be surveyed and platted as KIRK'S ADDITION and hereby dedicate and donate to the public for public use forever the lane as shown. In witness whereof I have hereunto set my hand and seal this 15th day of August 1963 A.D.

In presence of
Marion D. Davage
Patricia L. Wuker

Anna G. Kirkpatrick
 Anna G. Kirkpatrick

State of Minnesota } s.s.
 County of Anoka

On this 15th day of August 1963 A.D. before me, a notary public, within and for said County and State, personally appeared Anna G. Kirkpatrick, single, to me personally known to be the person described in and who executed the foregoing instrument; and she affirms and acknowledges that she executed the same as her free act and deed.

Jeanne M. Kurth
 Notary Public, Anoka County, Minnesota
 My commission expires Mar. 13, 1970

I do hereby certify that I have surveyed and platted the property described on this plat as KIRK'S ADDITION; that this plat is a correct representation of said survey; that all distances are correctly shown on said plat in feet and decimals of a foot; that the monuments for the guidance of future surveys have been correctly placed in the ground as shown on the plat; that the outside boundaries are correctly designated on the plat; that the topography of the land is correctly shown on the plat; and that there are no wet lands or public highways to be designated on said plat other than shown hereon.

Surveyor James L. Kurth
 Minnesota Registration No. 5332

Checked and approved this 19th day of August 1963 A.D.
Robert W. Audleman
 Anoka Co. Surveyor

State of Minnesota } ss.
 County of Anoka

Above certificate subscribed and sworn to before me, a notary public within and for said County and State this 15th day of August 1963 A.D.

Approved by the Village Council of the Village of Blaine this 16 day of August 1963 A.D.
Jerome A. Trapp
 Village Clerk
Alfred Berntson
 Mayor

I HEREBY CERTIFY THAT TAXES FOR THE YEAR 1962 ON THE LANDS DESCRIBED WITHIN ARE PAID

Robert A. Peterson
 County Treasurer
 by D. Larson deputy

TAXES PAID
 This 19th day of Aug 1963 Notary Public, Anoka County, Minnesota
Kenneth W. Campbell
 Auditor, Anoka County, Minn.
 My Commission expires March 13, 1970

OFFICE OF REGISTER OF DEEDS
 STATE OF MINNESOTA, COUNTY OF ANOKA } ss.
 I hereby certify that the within instrument was filed in this office for record on the 25th day of August 1963 at 2 o'clock P.M. and was duly recorded in book 25127 of plate 16.
Gertrude Schriver
 Register of Deeds
 By Margaret Maxwell Deputy

JEANNE M. KURTH
 Notary Public, Anoka County, Minn.
 My Commission Expires Mar. 13, 1970.