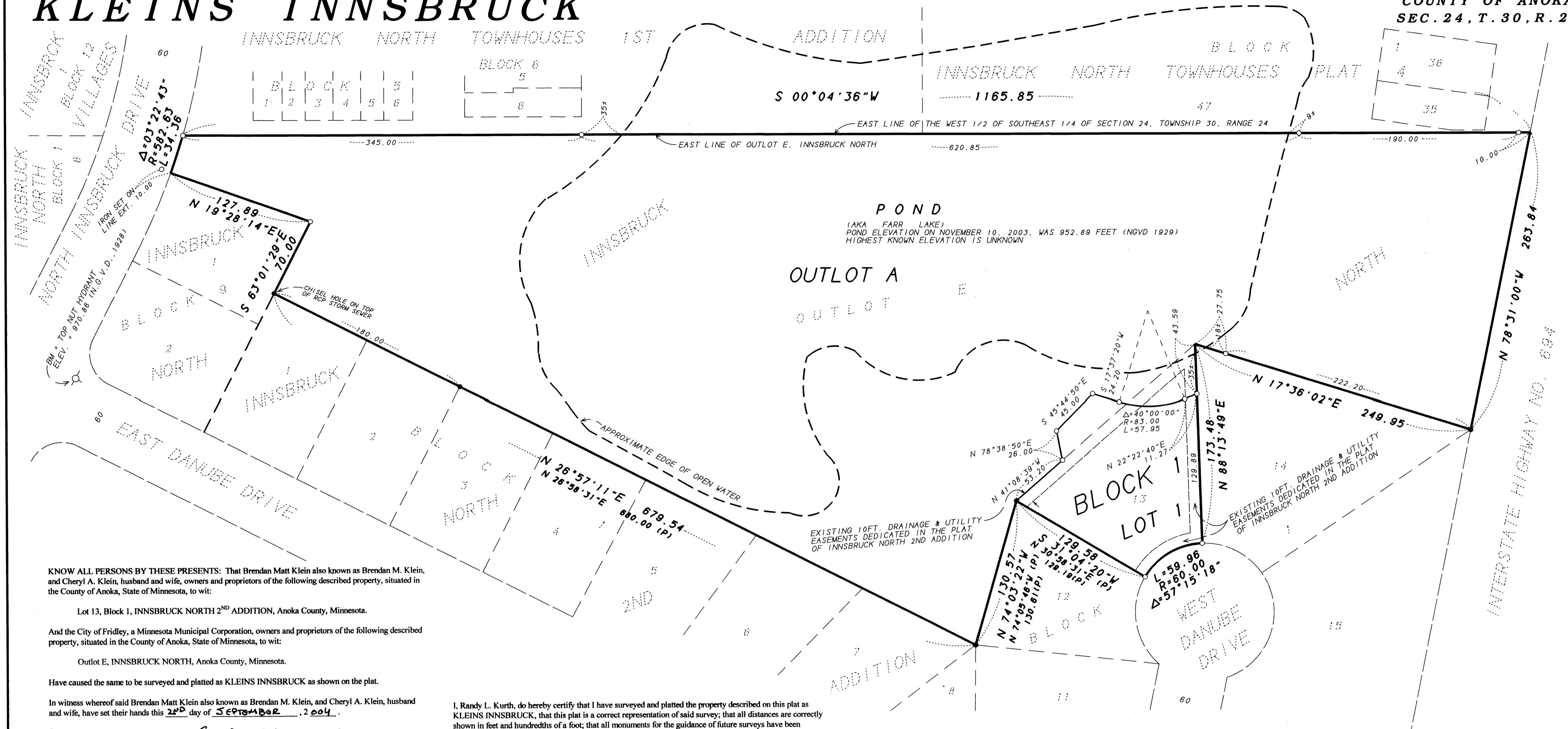


KLEINS INNSBRUCK

OFFICIAL PLAT

BK 48 of Abst pg 41

CITY OF FRIDLEY
COUNTY OF ANOKA
SEC. 24, T. 30, R. 24



KNOW ALL PERSONS BY THESE PRESENTS: That Brendan Matt Klein also known as Brendan M. Klein, and Cheryl A. Klein, husband and wife, owners and proprietors of the following described property, situated in the County of Anoka, State of Minnesota, to wit:

Lot 13, Block 1, INNSBRUCK NORTH 2ND ADDITION, Anoka County, Minnesota.

And the City of Fridley, a Minnesota Municipal Corporation, owners and proprietors of the following described property, situated in the County of Anoka, State of Minnesota, to wit:

Outlot E, INNSBRUCK NORTH, Anoka County, Minnesota.

Have caused the same to be surveyed and platted as KLEINS INNSBRUCK as shown on the plat.

In witness whereof said Brendan Matt Klein also known as Brendan M. Klein, and Cheryl A. Klein, husband and wife, have set their hands this 2ND day of SEPTEMBER, 2004.

Brendan Matt Klein *Cheryl A. Klein*
Brendan Matt Klein also known as Brendan M. Klein Cheryl A. Klein

STATE OF MINNESOTA
COUNTY OF ISANTI) The foregoing instrument was acknowledged before me this 2ND day of SEPTEMBER, 2004, by Brendan Matt Klein also known as Brendan M. Klein and Cheryl A. Klein, husband and wife.

KAREN J. KURTH
NOTARY PUBLIC - MINNESOTA
My Comm. Exp. Jan. 31, 2005

Karen J. Kurth
Notary Public Isanti County, Minnesota
My Commission Expires JANUARY 31, 2005

In witness whereof said City of Fridley, a Minnesota Municipal Corporation, has caused these presents to be signed by its proper officers this 25TH day of October, 2004.

CITY OF FRIDLEY
Scott J. Lund *Debra A. Skogen*
Scott J. Lund - Mayor Debra A. Skogen - City Clerk

STATE OF MN
COUNTY OF Anoka) The foregoing instrument was acknowledged before me this 25TH day of October, 2004, by Scott J. Lund, as Mayor, and Debra A. Skogen, as City Clerk of the City of Fridley, a Minnesota Municipal Corporation, on behalf of the Corporation.

JULIANNE M. TOSTENSON
NOTARY PUBLIC - MINNESOTA
MY COMMISSION EXPIRES JANUARY 31, 2005

Julianne M. Tosten
Notary Public Anoka County, MN
My Commission Expires 1-31-05

I, Randy L. Kurth, do hereby certify that I have surveyed and platted the property described on this plat as KLEINS INNSBRUCK, that this plat is a correct representation of said survey; that all distances are correctly shown in feet and hundredths of a foot; that all monuments for the guidance of future surveys have been correctly placed in the ground as shown on the plat; that all outside boundary lines are correctly shown on the plat; and that there are no wet lands or public highways to be designated other than as shown.

Randy L. Kurth
Randy L. Kurth, Land Surveyor
Minnesota Registration No. 20270

STATE OF MINNESOTA)
COUNTY OF ISANTI) The above certificate subscribed and sworn to before me this 27TH day of AUGUST, 2004, by Randy L. Kurth, Land Surveyor.

KAREN J. KURTH
NOTARY PUBLIC - MINNESOTA
My Comm. Exp. Jan. 31, 2005

Karen J. Kurth
Notary Public, Isanti County, Minnesota
My Commission Expires January 31, 2005

CITY OF FRIDLEY
COUNTY OF ANOKA
This plat of KLEINS INNSBRUCK, was approved and accepted by the City Council of the City of Fridley, Minnesota, at a regular meeting thereof held this 25TH day of October, 2004. If applicable, the written comments and recommendations of the Commissioner of Transportation and the County Highway Engineer have been received by the City or the prescribed 30 day period has elapsed without receipt of such comments and recommendations, as provided by Minnesota Statutes, Section 505.03, Subdivision 2.

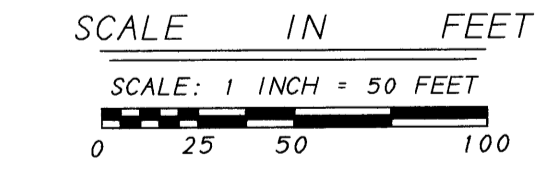
Scott J. Lund *Debra A. Skogen*
Scott J. Lund - Mayor Debra A. Skogen - City Clerk

Checked and approved this 10TH day of DECEMBER, 2004.

Larry D. Shi
Anoka County Surveyor

1971600.003 Abstract
OFFICE OF COUNTY RECORDS
STATE OF MINNESOTA, COUNTY OF ANOKA
I hereby certify that this abstract meets the requirements of this office for recording on the 16th Dec. 16, 2004
3:36 p.m. P.M. and was duly recorded in Book of Abstracts 41
Maureen J. Devine
JMH

S. Culver
Dec 16, 2004



- = IRON MONUMENT SET
- = IRON MONUMENT FOUND
- (M) = MEASURED DISTANCE
- (P) = PLAT DISTANCE

FOR THE PURPOSES OF THIS PLAT, THE EAST LINE OF OUTLOT E, INNSBRUCK NORTH, IS ASSUMED TO BEAR SOUTH 00 DEGREES, 04 MINUTES, 36 SECONDS WEST.

\$155.00