

KUBAN ADDITION

CITY OF FRIDLEY
COUNTY OF ANOKA
SEC. 12, TWP. 30, RGE. 24

KNOW ALL PERSONS BY THESE PRESENTS: That Kurt Manufacturing Company, Inc., a Minnesota corporation, owner of the following described property:

The South 370 feet of the North 1120 feet of the Northeast Quarter of the Northwest Quarter, Section 12, Township 30, Range 24, Anoka County, Minnesota

AND

That part of the South 370 feet of the North 1120 feet of the Northwest Quarter of the Northwest Quarter of said Section 12, lying Easterly of State Trunk Highway Number 65, as the same is now laid out and constructed, according to the United States Government Survey thereof, Anoka County, Minnesota

Has caused the same to be surveyed and platted as KUBAN ADDITION and does hereby dedicate to the public for public use the public ways and the drainage and utility easements as shown on this plat.

In witness whereof said Kurt Manufacturing Company, Inc., a Minnesota corporation, has caused these presents to be signed by its proper officer this 13 day of JULY, 2017.

KURT MANUFACTURING COMPANY, INC.

Steven R. Carlsen
Steven R. Carlsen, President

STATE OF Minnesota
COUNTY OF Anoka

This instrument was acknowledged before me on July 13th, 2017 by Steven R. Carlsen, President of Kurt Manufacturing Company, Inc., a Minnesota corporation, on behalf of the corporation.

Cynthia J. Morica
Cynthia J. Morica
Notary Public, Hennepin County, Minnesota
My commission expires January 31, 2020

I Thomas R. Balluff do hereby certify that this plat was prepared by me or under my direct supervision; that I am a duly Licensed Land Surveyor in the State of Minnesota; that this plat is a correct representation of the boundary survey; that all mathematical data and labels are correctly designated on this plat; that all monuments depicted on this plat have been, or will be correctly set within one year; that all water boundaries and wet lands, as defined in Minnesota Statutes, Section 505.01, Subd. 3, as of the date of this certificate are shown and labeled on this plat; and all public ways are shown and labeled on this plat.

Dated this 13th day of JULY, 2017.

Thomas R. Balluff
Thomas R. Balluff, Licensed Land Surveyor
Minnesota License No. 40361

STATE OF Minnesota
COUNTY OF Anoka

This instrument was acknowledged before me on July 13th, 2017 by Thomas R. Balluff.

Cynthia J. Morica
Cynthia J. Morica
Notary Public, Hennepin County, MN
My commission expires January 31, 2020

CITY COUNCIL, CITY OF FRIDLEY, MINNESOTA

This plat of KUBAN ADDITION was approved and accepted by the City Council of the City of Fridley, Minnesota at a regular meeting thereof held this 24th day of July, 2017, and said plat is in compliance with the provisions of Minnesota Statutes, Section 505.03, Subd. 2.

CITY COUNCIL, CITY OF FRIDLEY, MINNESOTA

By: Scott J. Lind Mayor By: Duane Hagen Clerk

COUNTY SURVEYOR

I hereby certify that in accordance with Minnesota Statutes, Section 505.021, Subd. 11, this plat has been reviewed and approved this 25th day of JULY, 2017.

By: Larry D. Korum
Larry D. Korum
Anoka County Surveyor

COUNTY AUDITOR/TREASURER

Pursuant to Minnesota Statutes, Section 505.021, Subd. 9, taxes payable in the year 2017 on the land hereinbefore described have been paid. Also, pursuant to Minnesota Statutes, Section 272.12, there are no delinquent taxes and transfer entered this 26th day of July, 2017.

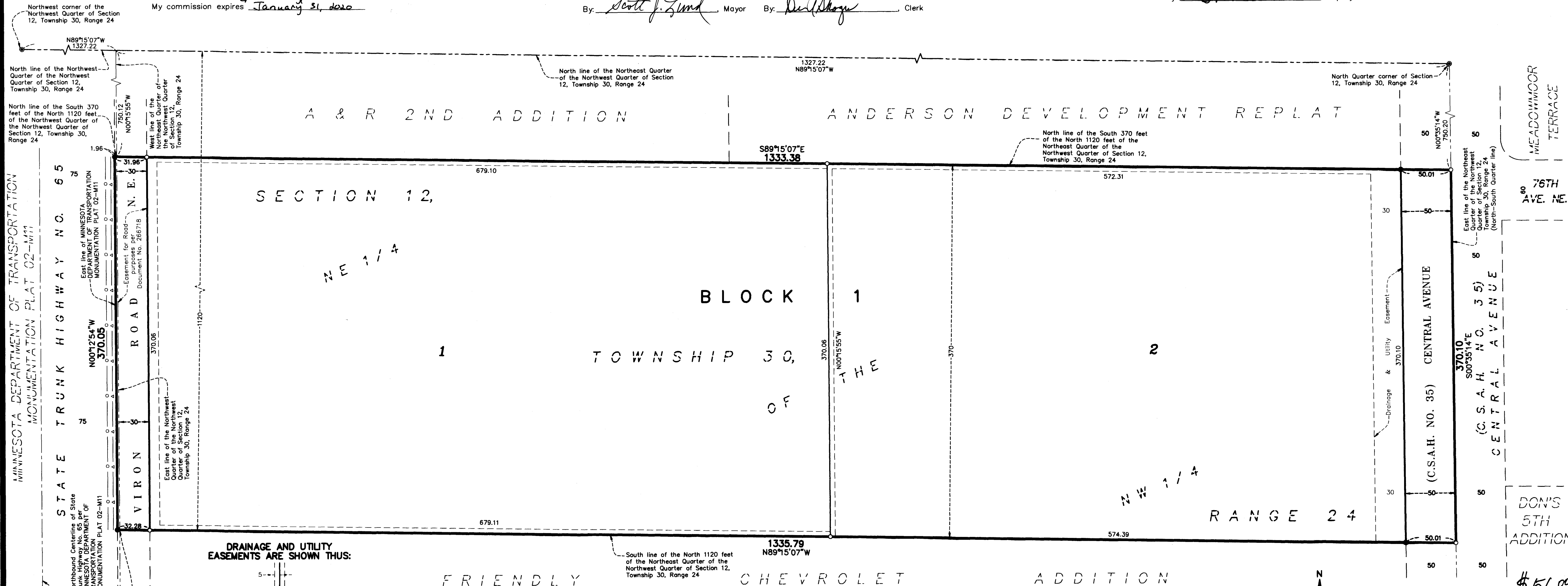
Janell M. Sawyer
Janell M. Sawyer
Property Tax Administrator
By: J. Peterson Deputy

COUNTY RECORDER/REGISTRAR OF TITLES

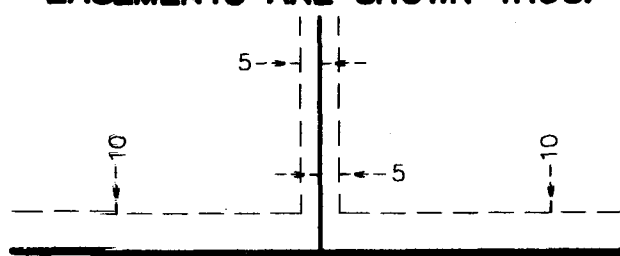
County of Anoka, State of Minnesota

I hereby certify that this plat of KUBAN ADDITION was filed in the office of the County Recorder/Registrar of Titles for public record on this 26th day of July, 2017, at 14:06 o'clock P.M. and was duly recorded as Document Number 550124:001.

Janell M. Sawyer
Janell M. Sawyer
County Recorder/Registrar of Titles
By: J. Peterson Deputy

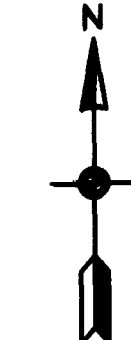
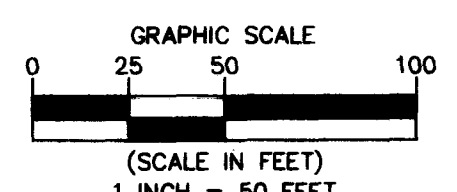


DRAINAGE AND UTILITY EASEMENTS ARE SHOWN THUS:



- Denotes Found Anoka County Monument
- Denotes Found Iron Monument
- Denotes 5/8 inch by 14 inch Rebar, set or to be set within one year of recording of this plat and marked with license number 40361
- ▲— Denotes Access Control per the plat of MINNESOTA DEPARTMENT OF TRANSPORTATION MONUMENTATION PLAT 02-M11
- Denotes Limitation of Right of Access to State Trunk Highway No. 65 per Document No. 214588

For the purposes of this plat, the South line of the North 1120 feet of the Northeast Quarter of the Northwest Quarter of Section 12, Township 30, Range 24 is assumed to have a bearing of North 89 degrees 15 minutes 07 seconds West.



Carlson McCain
ENVIRONMENTAL · ENGINEERING · SURVEYING

\$56.00