

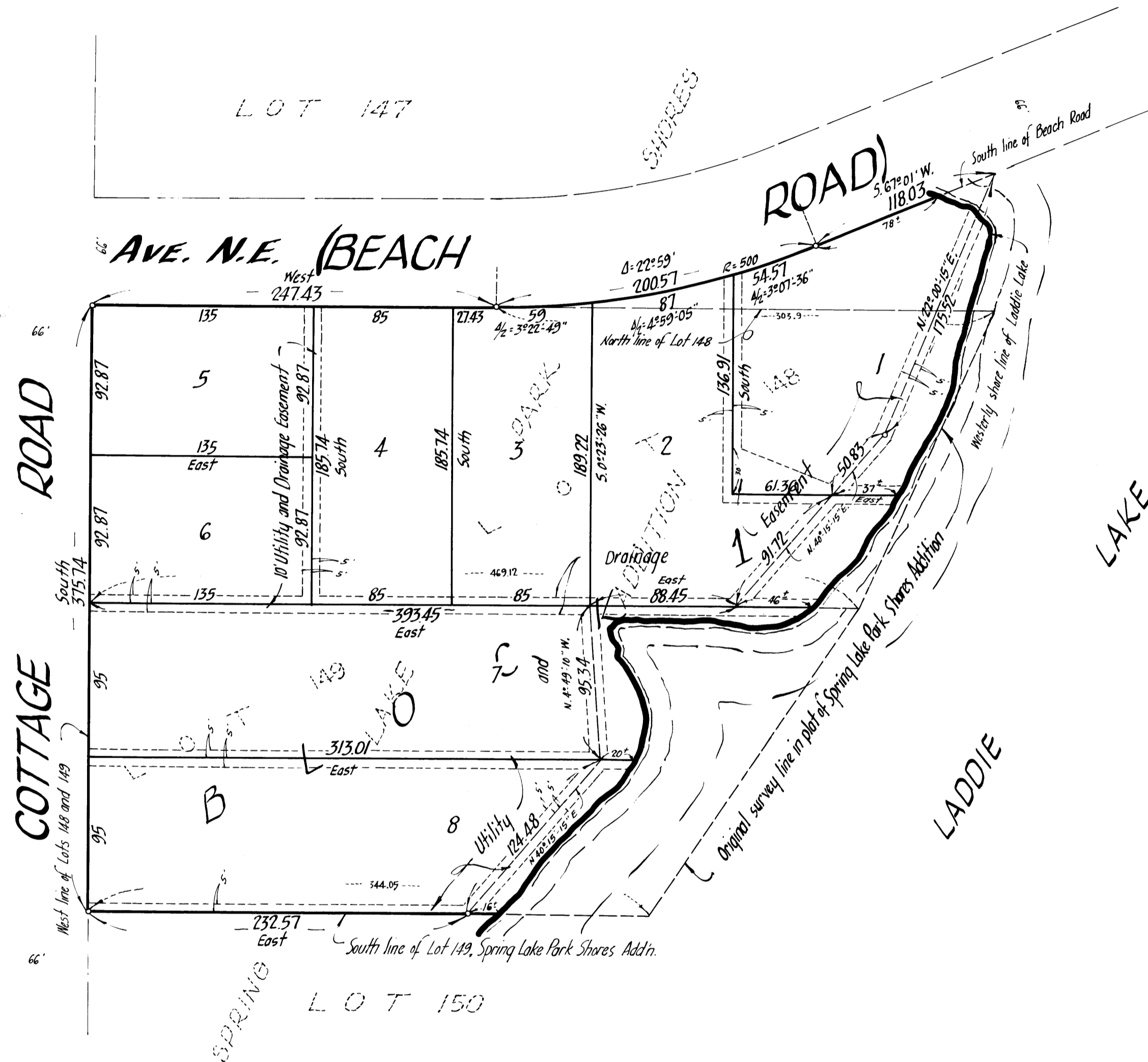
Laddie Lake Estates

VILLAGE of BLAINE

COUNTY of ANOKA

Bearings are assumed
Scale 1" = 60'
September, 1962

87 TH
Denotes Iron Monument



KNOW ALL MEN BY THESE PRESENTS: that Dalberg Builders Inc., a Minnesota Corporation, owner and proprietor of the following described property situate in the State of Minnesota and County of Anoka, to-wit: Lots 148 and 149, Spring Lake Park Shores Addition, and that part of said Spring Lake Park Shores Addition lying north of said Lot 148 and southerly of the southerly line of Beach Road and lying westerly of the westerly shore line of Laddie Lake; have caused the same to be surveyed and platted as LADDIE LAKE ESTATES; subject to the Utility and Drainage Easements as shown on the annexed plat. In witness whereof said Dalberg Builders Inc., has caused these presents to be signed by its proper officers and its corporate seal to be hereunto affixed this 18th day of April A.D. 1963.

In Presence of

Ronald M. Benson
Juanita Kling

As to Samuel C. Dalberg and Genevieve L. Dalberg

DALBERG BUILDERS INC.
Samuel C. Dalberg
SAMUEL C. DALBERG - PRESIDENT
Genevieve L. Dalberg
GENEVEVE L. DALBERG - TREASURER

State of Minnesota }
County of Anoka } On this 18th day of April A.D. 1963, before me, a Notary Public, within and for said County and State personally appeared Samuel C. Dalberg and Genevieve L. Dalberg, to me personally known who, being each by me duly sworn did say that they are respectively the President and Treasurer of Dalberg Builders Inc., the corporation named in the foregoing instrument, and that the seal affixed to said instrument is the corporate seal of said corporation, and that said instrument was signed in behalf of said Corporation by authority of its Board of Directors and said Samuel C. Dalberg and Genevieve L. Dalberg acknowledged said instrument to be the free act and deed of said Corporation.

Ronald M. Benson
Notary Public, Washington County, Minnesota
My Commission Expires August 22, 1969

I hereby certify that I have surveyed and platted the property described on this plat as LADDIE LAKE ESTATES, that this plat is a correct representation of said survey, that all distances are correctly shown on said plat in feet and decimals of a foot; that the monuments for guidance of future surveys have been correctly placed in the ground as shown on said plat; that the outside boundary lines are correctly designated on said plat, and that there are no net lands or public highways to be designated on said plat other than are shown thereon.

E. A. Rathbun
Surveyor - Minnesota Registration No. 3795

State of Minnesota }
County of Hennepin } Above certificate subscribed and sworn to before me, a Notary Public, within and for said State and County on this 10th day of October A.D. 1962.

Warren D. Olson
Notary Public, Hennepin County, Minnesota
My Commission Expires August 22, 1969

We hereby certify that the Village of Blaine's Council, Anoka County, Minnesota, duly accepted and approved the annexed plat of LADDIE LAKE ESTATES, at a regular meeting thereof held this 7 day of JUNE A.D. 1963.

VILLAGE of BLAINE, ANOKA CO., MINN.

by *Alfred Bernsten* Mayor
by *Jerome A. Trapp* Clerk

Checked and approved this 12th day of June A.D. 1963.

Roland W. Anderson
Anoka County Surveyor

248602
OFFICE OF REGISTER OF DEEDS }
STATE OF MINNESOTA, COUNTY OF ANOKA } ss
I hereby certify that the within instrument was filed in this office for record on the 18th day of JUN 12 1963 A.D. 1963 at 2:30 o'clock P.M. and was duly recorded in book 27 of Deeds page 7

TAXES PAID
This 18th day of June 1963
Kenneth W. Campbell
Auditor, Anoka County, Minn.
Wayne A. Kessler Deputy

I HEREBY CERTIFY THAT TAXES FOR THE YEAR 1962 ON THE LANDS DESCRIBED WITHIN ARE PAID
Robert A. Peterson
County Treasurer
By L. Jameson Deputy

Suburban Engineering, Inc.
—Engineers & Surveyors—