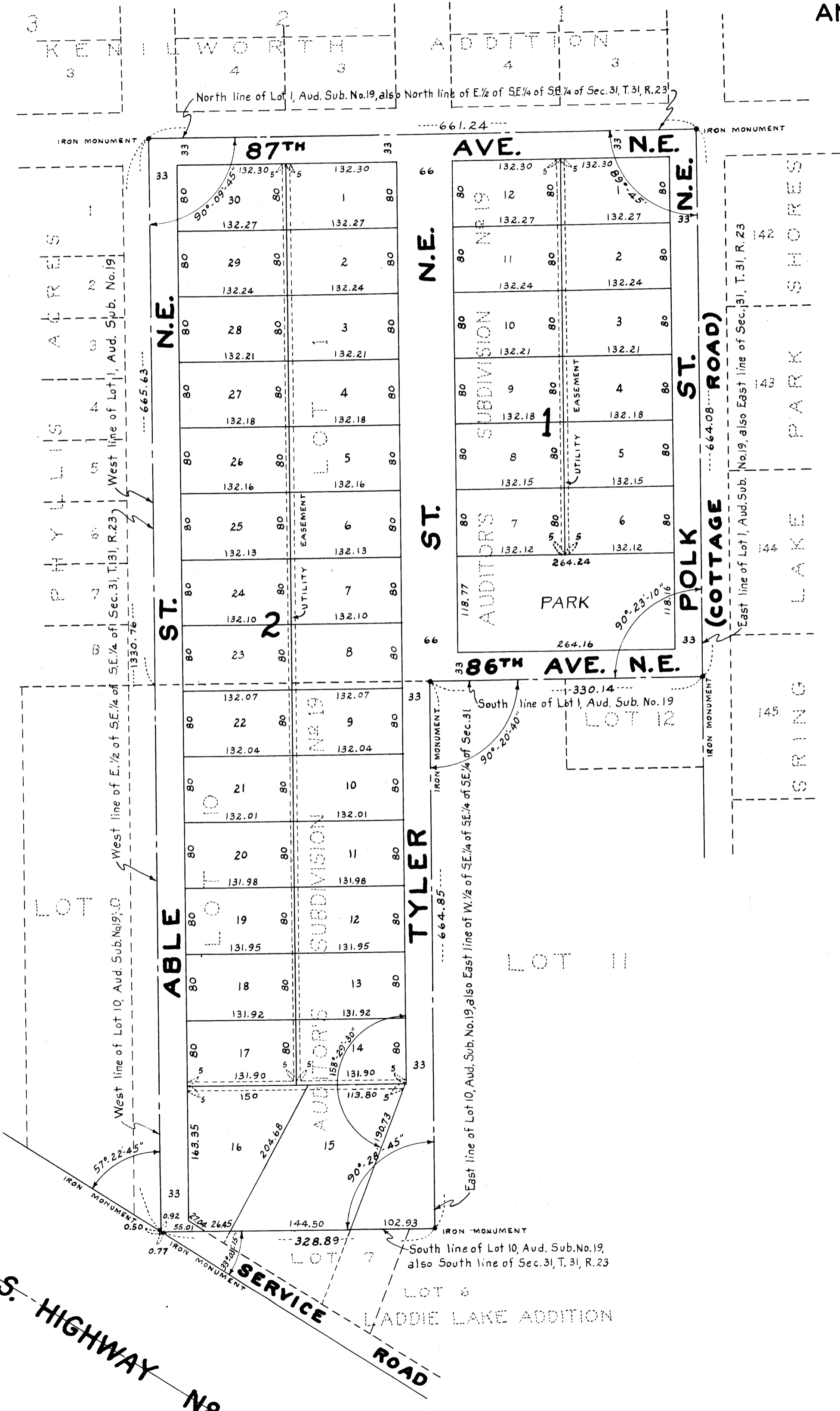


LADDIE LAKE SECOND ADDITION

VILLAGE OF BLAINE
ANOKA COUNTY, MINNESOTA

CARTWRIGHT & OLSON
LAND SURVEYORS



KNOW ALL MEN BY THESE PRESENTS: That we, Stanley W. Dahlmeier and Frances A. Dahlmeier, his wife, owners and proprietors of the following described property situate in the County of Anoka and State of Minnesota to-wit: Lots numbered One (1) and Ten (10), Auditor's Subdivision Number Nineteen (19), Anoka County, State of Minnesota, according to the plats thereof on file and of record in the office of the Register of Deeds in and for said Anoka County, have caused the same to be surveyed and platted as LADDIE LAKE SECOND ADDITION, and do hereby donate and dedicate to the public, for public use forever, the Streets Avenues and Park as shown on the annexed plat, also subject to easements for utility purposes as shown on the annexed plat. In witness whereof we have hereunto set our hands and seals on this 3 day of February A.D. 1956.

In the presence of:
Louis W. Nauman and Kathleen D. Johnson
Louis W. Nauman and Kathleen D. Johnson
Signed: Stanley W. Dahlmeier
Frances A. Dahlmeier

STATE OF MINNESOTA } s.s.
COUNTY OF ANOKA }
On this 3 day of February A.D. 1956 before me, a Notary Public within and for said County and State personally appeared Stanley W. Dahlmeier and Frances A. Dahlmeier, his wife, to me personally known to be the persons described in and who executed the foregoing instrument and they affirm and acknowledge that they executed the same as their own free act and deed.

Louis W. Nauman
Notary Public, Anoka County, Minnesota
My Commission Expires Feb. 27, 1961

I hereby certify that I have surveyed and platted the land described in the dedication on this plat as LADDIE LAKE SECOND ADDITION; that this plat is a correct representation of said survey; that all distances are correctly shown on said plat in figures denoting feet and decimals of a foot; that the monuments for the guidance of future surveys have been correctly placed in the ground as shown on said plat; that the topography of the land is correctly shown on said plat; that the outside boundaries of the land are correctly designated on said plat; and that there are no wet lands or public highways to be designated on said plat other than are shown thereon.

Harry A. Cartwright
Registered Land Surveyor, Minn. Reg. No. 1983

STATE OF MINNESOTA } s.s.
COUNTY OF HENNEPIN }
Above certificate subscribed and sworn to before me, a Notary Public within and for said County and State on this 30th day of January A.D. 1956.

Norman C. Hoium
Notary Public, Hennepin County, Minnesota
My Commission Expires Oct. 14, 1961

We hereby certify that the Village Council of the Village of Blaine, Anoka County, Minnesota, duly accepted and approved the annexed plat of LADDIE LAKE SECOND ADDITION at a regular meeting thereof held this 27 day of September A.D. 1956.

VILLAGE OF BLAINE, ANOKA COUNTY, MINN.
by Alfred Bernsten its Mayor
by Robert Walther its Clerk

23977
Office of REGISTRAR OF TITLES
STATE OF MINNESOTA
COUNTY OF ANOKA
I hereby certify that the within instrument recorded in this office on the 6 day of December 1956, at 11:50 o'clock A.M.
By Arthur H. Hanger Registrar of Titles
Allen Goettcher DEPUTY REGISTRAR OF TITLES

TAXES PAID
This 5 day of Dec 1956
Samuel H. Campbell
County Auditor, Anoka County, Minn.
Walter D. Bowers
County Treasurer

I HEREBY CERTIFY THAT TAXES FOR THE YEAR 1955 ON THE LANDS BEING WITHIN ARE PAID
Walter D. Bowers
County Treasurer
W. P. Peterson, Deputy

U.S. HIGHWAY NO. 10
SERVICE ROAD