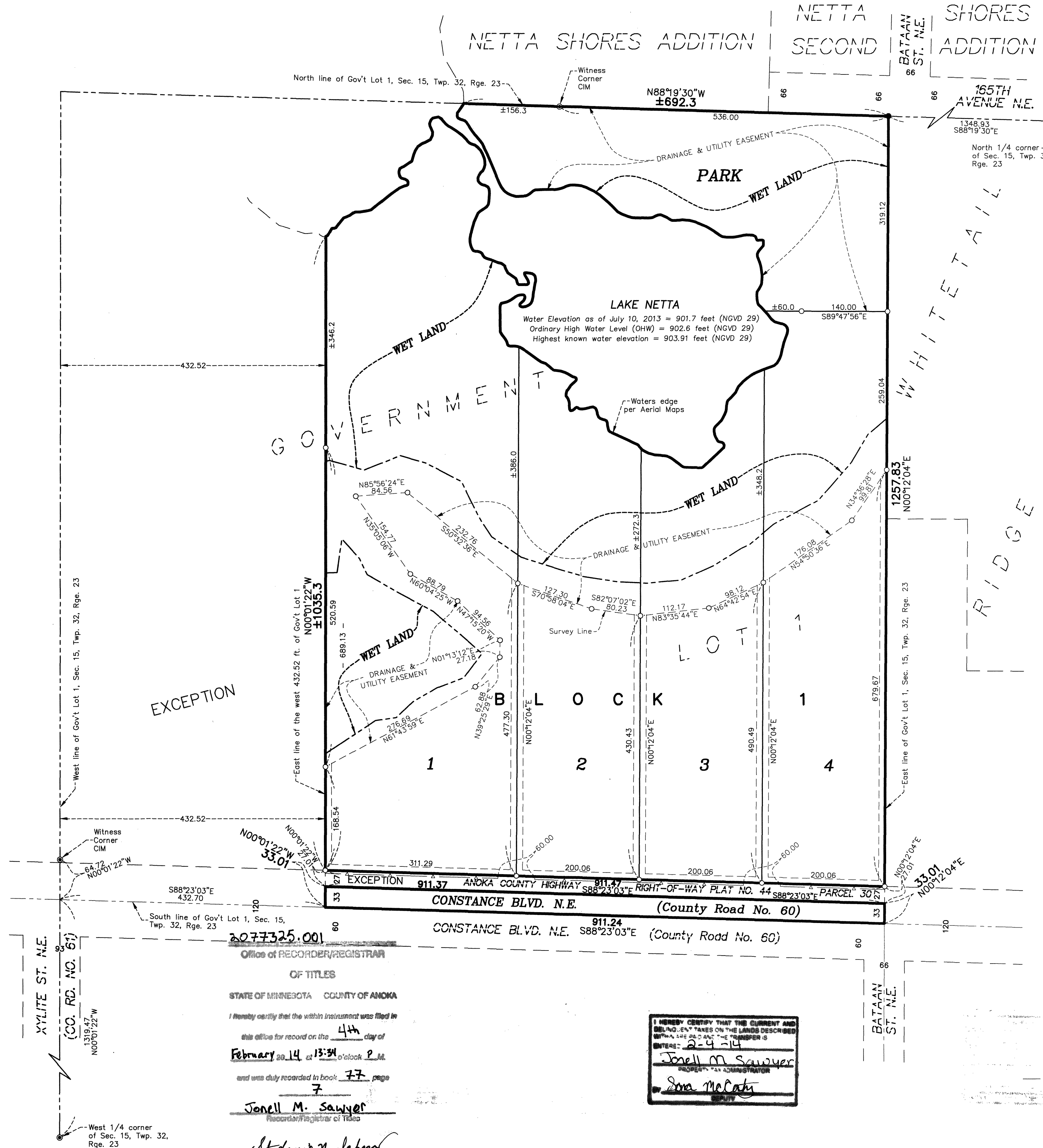


LAKE NETTA PRESERVE

CITY OF HAM LAKE
COUNTY OF ANOKA
SEC. 15, TWP. 32, RGE. 23
Book 77 of ABST Page 7



KNOW ALL PERSONS BY THESE PRESENTS: That KK Management, LLC, a Minnesota limited liability company, owner of the following described property:
 Government Lot 1, Section 15, Township 32, Range 23, except the West 432.52 feet thereof and also except Parcel 30, ANOKA COUNTY HIGHWAY RIGHT-OF-WAY PLAT NO. 44, Anoka County, Minnesota.
 Has caused the same to be surveyed and platted as LAKE NETTA PRESERVE and does hereby dedicate to the public for public use the public way and drainage and utility easements as shown by this plat. Also dedicating to the County of Anoka the right of access onto County Road No. 60 as shown on this plat.
 In witness whereof said KK Management, LLC, a Minnesota limited liability company, has caused these presents to be signed by its proper officer this 30 day of October, 2013.

KK MANAGEMENT, LLC
Mark D. Oberhamer
 Mark D. Oberhamer, Chief Manager

STATE OF MINNESOTA
 COUNTY OF Anoka

This instrument was acknowledged before me on October 30, 2013 by Mark D. Oberhamer, Chief Manager of KK Management, LLC, a Minnesota limited liability company.

Cynthia J. Morical
 Cynthia J. Morical
 Notary Public, Hennepin County, MN
 My commission expires January 31, 2015

I Thomas R. Balluff do hereby certify that this plat was prepared by me or under my direct supervision; that I am a duly Licensed Land Surveyor in the State of Minnesota; that this plat is a correct representation of the boundary survey; that all mathematical data and labels are correctly designated on this plat; that all monuments depicted on this plat have been, or will be correctly set within one year; that all water boundaries and wet lands, as defined in Minnesota Statutes, Section 505.01, Subd. 3, as of the date of this certificate are shown and labeled on this plat; and all public ways are shown and labeled on this plat.

Dated this 25th day of October, 2013.

Thomas R. Balluff
 Thomas R. Balluff, Licensed Land Surveyor
 Minnesota License No. 40361

STATE OF MINNESOTA
 COUNTY OF Anoka

This instrument was acknowledged before me on October 25th, 2013 by Thomas R. Balluff.

Cynthia J. Morical
 Cynthia J. Morical
 Notary Public, Hennepin County, MN
 My commission expires January 31, 2015

CITY COUNCIL, CITY OF HAM LAKE, MINNESOTA

This plat of LAKE NETTA PRESERVE was approved and accepted by the City Council of the City of Ham Lake, Minnesota at a regular meeting thereof held this 21st day of October, 2013, and said plat is in compliance with the provisions of Minnesota Statutes, Section 505.03, Subd. 2.

CITY COUNCIL, CITY OF HAM LAKE, MINNESOTA
 By: *David R. Vahl* Mayor
 By: *Demetrius* Clerk

COUNTY SURVEYOR

I hereby certify that in accordance with Minnesota Statutes, Section 505.021, Subd. 11, this plat has been reviewed and approved this 4th day of February, 2014.

By: *Larry O. Hoium by Charles E. Bitten, Deputy*
 Larry D. Hoium
 Anoka County Surveyor

Office of RECORDER/REGISTRAR
 OF TITLES
 STATE OF MINNESOTA COUNTY OF ANOKA
 I hereby certify that the within instrument was filed in this office for record on the 4th day of February 2014 at 13:34 o'clock P.M. and was duly recorded in book 77 page 7
Jonell M. Sawyer
 Recorder/Registrar of Titles
Stephanie J. Lehman
 Deputy

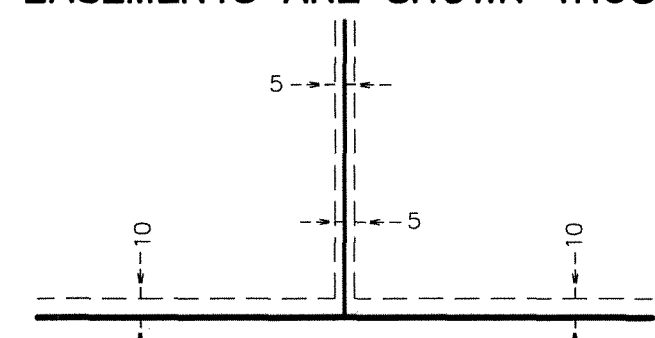
I HEREBY CERTIFY THAT THE CURRENT AND BEING TAKEN ON THE LANDS DESCRIBED WITHIN ARE AS SHOWN ON THE INSTRUMENT DATED: 2-4-14
Jonell M. Sawyer
 Recorder/Registrar of Titles
Sara McCarty
 Deputy

For the purposes of this plat, the east line of GOVERNMENT LOT 1, Section 15, Township 32, Range 23 is assumed to have a bearing of North 00 degrees 12 minutes 04 seconds East.

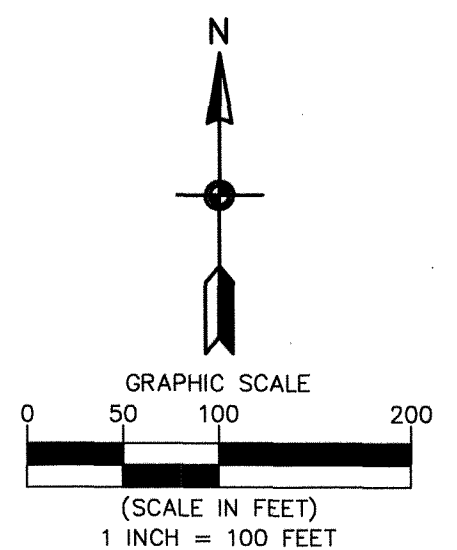
- Denotes 1/2 inch by 14 inch iron monument set or to be set within one year of recording of this plat and marked with license number 40361
- Denotes Found Iron Monument unless otherwise noted
- Denotes Found Anoka County Cast Iron Monument
- Denotes Right of Access dedicated to Anoka County

BENCHMARK:
 Anoka County Benchmark #4023 railroad spike in power pole north of Constance Blvd. and County Road No. 61 intersection.
 Elevation = 907.97 feet (NGVD 29)

DRAINAGE AND UTILITY EASEMENTS ARE SHOWN THUS:



being 5 feet in width, and adjoining side lot lines, and 10 feet in width and adjoining right of way lines and rear lot lines unless otherwise shown on this plat.



Carlson McCain
 ENVIRONMENTAL • ENGINEERING • SURVEYING