

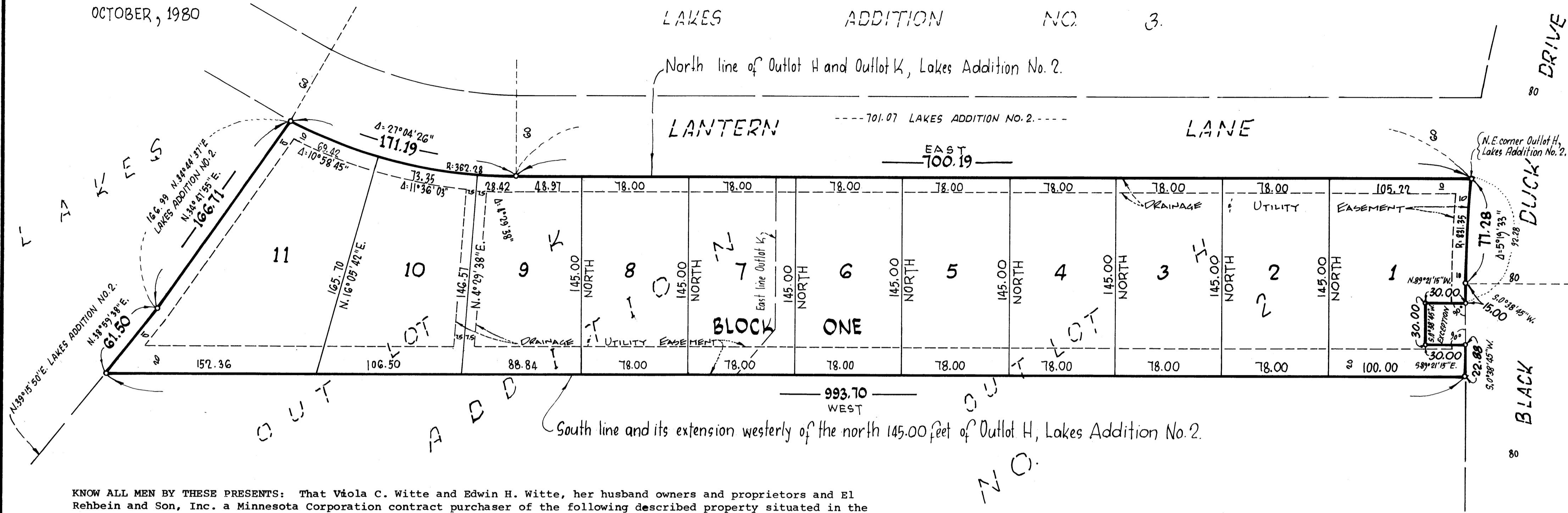
# LAKES ADDITION NO 6

CITY OF LINO LAKES ANOKA COUNTY

LAKES ADDITION NO. 3.

Bearings shown are assumed  
o Denotes iron monument

OCTOBER, 1980



KNOW ALL MEN BY THESE PRESENTS: That Viola C. Witte and Edwin H. Witte, her husband owners and proprietors and El Rehbein and Son, Inc. a Minnesota Corporation contract purchaser of the following described property situated in the County of Anoka, State of Minnesota to wit:

The North 145.00 feet of Outlot H, Lakes Addition No. 2, except that part described as follows: Commencing at the northeast corner of said Outlot H; thence South along the East line of said Outlot H, 92.28 feet to the point of beginning; thence continuing South along said East line, 30 feet; thence West at right angles to said East line, 30 feet; thence North at right angles, 30 feet; thence East at right angles, 30 feet to the point of beginning and there terminating.

and that El Rehbein and Son, Inc., a Minnesota Corporation owner and proprietor and the First National Bank of Stillwater, a United States Corporation, mortgagee of the following described property situated in the County of Anoka, State of Minnesota, to wit:

That Part of Outlot K, Lakes Addition No. 2, lying northerly of the westerly extension of the south line of the north 145.00 feet of Outlot H, Lakes Addition No. 2, according to the recorded plat thereof.

have caused the same to be surveyed and platted as LAKES ADDITION NO. 6 and do hereby donate and dedicate to the public for use forever the drainage and utility easements as shown on the plat. In witness whereof said Viola C. Witte and Edwin H. Witte, her husband have hereunto set their hands this 21<sup>st</sup> day of July 1981 and in witness whereof said El Rehbein and Son, Inc., a Minnesota Corporation, has caused these presents to be signed by its proper officer and its corporate seal to be hereunto affixed this 21<sup>st</sup> day of July 1981 and in witness whereof said The First National Bank of Stillwater has caused these presents to be signed by its proper officers and its corporate seal to be hereunto affixed this 21<sup>st</sup> day of July 1981.

Viola C. Witte  
Viola C. Witte

Edwin H. Witte  
Edwin H. Witte

Kenneth E. Rehbein  
Kenneth E. Rehbein Vice President

Thomas H. You  
its Cashier

OFFICE OF COUNTY RECORDER  
STATE OF MINNESOTA COUNTY OF ANOKA  
I hereby certify that the within instrument was filed in this office on the JUL 28 1981 at 2:20 P.M. and was duly recorded on the 33rd page.

Charles R. Selbre  
Auditor, Anoka County

BY J.P. Kaminski  
Deputy

STATE OF MINNESOTA The foregoing instrument was acknowledged before me this 21<sup>st</sup> day of July 1981 COUNTY OF ANOKA by Viola C. Witte and Edwin H. Witte, her husband.

Gerald F. Blackburn  
Notary Public, Anoka County, Minnesota  
My Commission Expires December 19, 1986

STATE OF MINNESOTA The foregoing instrument was acknowledged before me this 21<sup>st</sup> day of July 1981 by COUNTY OF ANOKA Kenneth E. Rehbein its Vice President and by El Rehbein and Son, Inc. of El Rehbein and Son, Inc., a Minnesota corporation, on behalf of its corporation.

Gerald F. Blackburn  
Notary Public, Anoka County, Minnesota  
My Commission Expires December 19, 1986

STATE OF MINNESOTA The foregoing instrument was acknowledged before me this 21<sup>st</sup> day of July 1981 by COUNTY OF WASHINGTON O.O. Heimerl its President and by Dennis R. You its Cashier National Bank of Stillwater, a United States Corporation, on behalf of its corporation.

William W. Friedrich  
Notary Public, WASH. County, Minnesota  
My Commission Expires Oct 19, 1985

I, Howard W. Rogers, hereby certify that I have surveyed and platted the property described in the dedication of this plat as LAKES ADDITION NO. 6; that this plat is a correct representation of said survey; that all distances are correctly shown on the plat; that all monuments have been correctly placed in the ground as shown; that the outside boundary lines are correctly designated on the plat; and there are no wet lands, or public highways other than as shown thereon.

Howard W. Rogers  
Howard W. Rogers, Land Surveyor  
Minnesota Registration No. 10945

STATE OF MINNESOTA The Surveyor's certificate was subscribed and sworn to before me, a Notary Public, this 20<sup>th</sup> day of July, 1981.

Marietta L. Zuehlke  
Notary Public, Anoka County, Minnesota  
My Commission Expires

We hereby certify that the City Council of the City of Lino Lakes, Anoka County, Minnesota duly accepted and approved this plat of LAKES ADDITION NO. 6 at a regular meeting thereof held this 27<sup>th</sup> day of July, 1981.

CITY COUNCIL OF LINO LAKES, MINNESOTA  
By Kenneth Dausley  
By Bruce R. Darnes

Checked and approved this 28<sup>th</sup> day of July, 1981  
Roland W. Anderson  
Anoka County Surveyor  
by Deputy W. D. Anderson