

LAKES ADDITION NO. 7

City of Lino Lakes Anoka County

KNOW ALL MEN BY THESE PRESENTS: That Viola C. Witte and Edwin H. Witte, her husband owners and proprietors and El Rehbein and Son, Inc., a Minnesota corporation, contract purchaser of the following described property situated in the County of Anoka, State of Minnesota to wit:

Outlot K, Lakes Addition No. 2, except that part platted as Lakes Addition No. 6 and except that part described as follows: Beginning at the most easterly corner of Lot 32, Block 4, Lakes Addition No. 2; Thence on an assumed bearing of S51°00'22"E, along the extension southeasterly of the lot line between lots 32 & 33, said block 4, a distance of 147.00 feet; thence S38°59'38"W, parallel with the southeasterly line of said block 4, a distance of 180.61 feet; Thence N66°00'24"W to a point on the southeasterly line of lot 30, said block 4, said point being 20 feet, as measured along southeasterly line, southerly of the most easterly corner of said lot 30; Thence N38°59'38"E, along the southeasterly line of said block 4, to the point of beginning. Also except that part platted in Anoka County Highway Right of Way Plat No. 11; and that El Rehbein and Son, Inc., a Minnesota corporation, owner and proprietor and The First National Bank of Stillwater, a United States corporation, mortgagee of the following described property situated in the County of Anoka, State of Minnesota, to wit:

Outlot H, Lakes Addition No. 2, lying South of Lakes Addition No. 6, except that part platted in Anoka County Highway Right of Way Plat No. 11;

have caused the same to be surveyed and platted as LAKES ADDITION NO. 7 and do hereby donate and dedicate to the public for public use forever the court, lane and drainage and utility easements as shown on this plat. In witness whereof said Viola C. Witte and Edwin H. Witte, her husband, have hereunto set their hands this 21st day of July 1981 and in witness whereof said El Rehbein and Son, Inc. has caused these presents to be signed by its proper officer and its corporate seal to be hereunto affixed this 21st day of July 1981 and in witness whereof said The First National Bank of Stillwater has caused these presents to be signed by its proper officers and its corporate seal to be hereunto affixed this 21st day of July 1981.

Viola C. Witte Edwin H. Witte
Viola C. Witte Edwin H. Witte

EL REHBEIN AND SON, INC.
Kenneth E. Rehbein
Kenneth E. Rehbein Vice President

THE FIRST NATIONAL BANK OF STILLWATER
D. Heine its President
Dennis A. Yen its Cashier

STATE OF MINNESOTA The foregoing instrument was acknowledged before me this 21st day of July 1981 COUNTY OF Ramsey by Viola C. Witte and Edwin H. Witte, her husband.
Gerard F. Blackbird
Notary Public, Anoka County, Minnesota
My Commission Expires December 19, 1986

"NO DELINQUENT TAXES AND TRANSFER ENTERED"
July 28th 19 81
Charles R. Lebeck
Auditor, Anoka County
BY J.R. Kaminski
Deputy

STATE OF MINNESOTA The foregoing instrument was acknowledged before me this 21st day of July 1981 by COUNTY OF Anoka Kenneth E. Rehbein its Vice President and by El Rehbein and Son, Inc., a Minnesota corporation, on behalf of its corporation.

Gerard F. Blackbird
Notary Public, Anoka County, Minnesota
My Commission Expires December 19, 1986

STATE OF MINNESOTA The foregoing instrument was acknowledged before me this 21st day of July 1981 by COUNTY OF Washington Dennis A. Yen its Cashier and by First National Bank of Stillwater, a United States Corporation, on behalf of its corporation.

Melvin H. Fridrick
Notary Public, WASH. County, Minnesota
My Commission Expires Oct. 19, 1985

I, Howard W. Rogers, hereby certify that I have surveyed and platted the property described in the dedication of this plat as LAKES ADDITION NO. 7; that this plat is a correct representation of said survey; that all distances are correctly shown on the plat; that all monuments have been correctly placed in the ground as shown; that the outside boundary lines are correctly designated on the plat; and there are no wet lands or public highways other than as shown thereon.

Howard W. Rogers
Howard W. Rogers, Land Surveyor
Minnesota Registration No. 10945

STATE OF MINNESOTA The Surveyor's certificate was acknowledged before me, a Notary Public, this 10th day of July, 1981, by Howard W. Rogers, Land Surveyor.

MARIETTA L. ZUGILKE
NOTARY PUBLIC - MINNESOTA
ANOKA COUNTY
MY COMMISSION EXPIRES APR. 14, 1984

Marietta L. Zugilke
Notary Public, Anoka County, Minnesota
My Commission Expires April 14th 1984

We hereby certify that the City Council of the City of Lino Lakes, Anoka County, Minnesota duly accepted and approved this plat of LAKES ADDITION NO. 7 at a regular meeting thereof held this 27th day of July, 1981.

CITY COUNCIL OF LINO LAKES, MINNESOTA
By Kenneth Hourley Mayor
By John L. Hansen Clerk

Checked and approved this 28th day of July, 1981.

Roland W. Anderson
Anoka County Surveyor
by Deputy Mike D. Olson

OFFICE OF COUNTY RECORDER
STATE OF MINNESOTA, COUNTY OF ANOKA
I hereby certify that the within instrument was filed in this office for record on the JUL 28 1981 A.D., 1981 at 3:30 o'clock P.M., and was duly recorded in book 2206 page 24
Bill Oswald
County Recorder
By M. Hollenbeck

REHBEIN AND SON
SEAL

FIRST NATIONAL BANK OF STILLWATER
SEAL

LINO LAKES
SEAL
MINNESOTA

LAKES ADDITION NO. 7

CITY OF LINO LAKES

ANOKA COUNTY

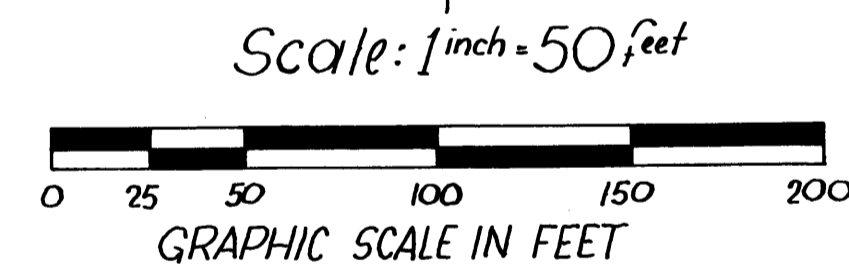
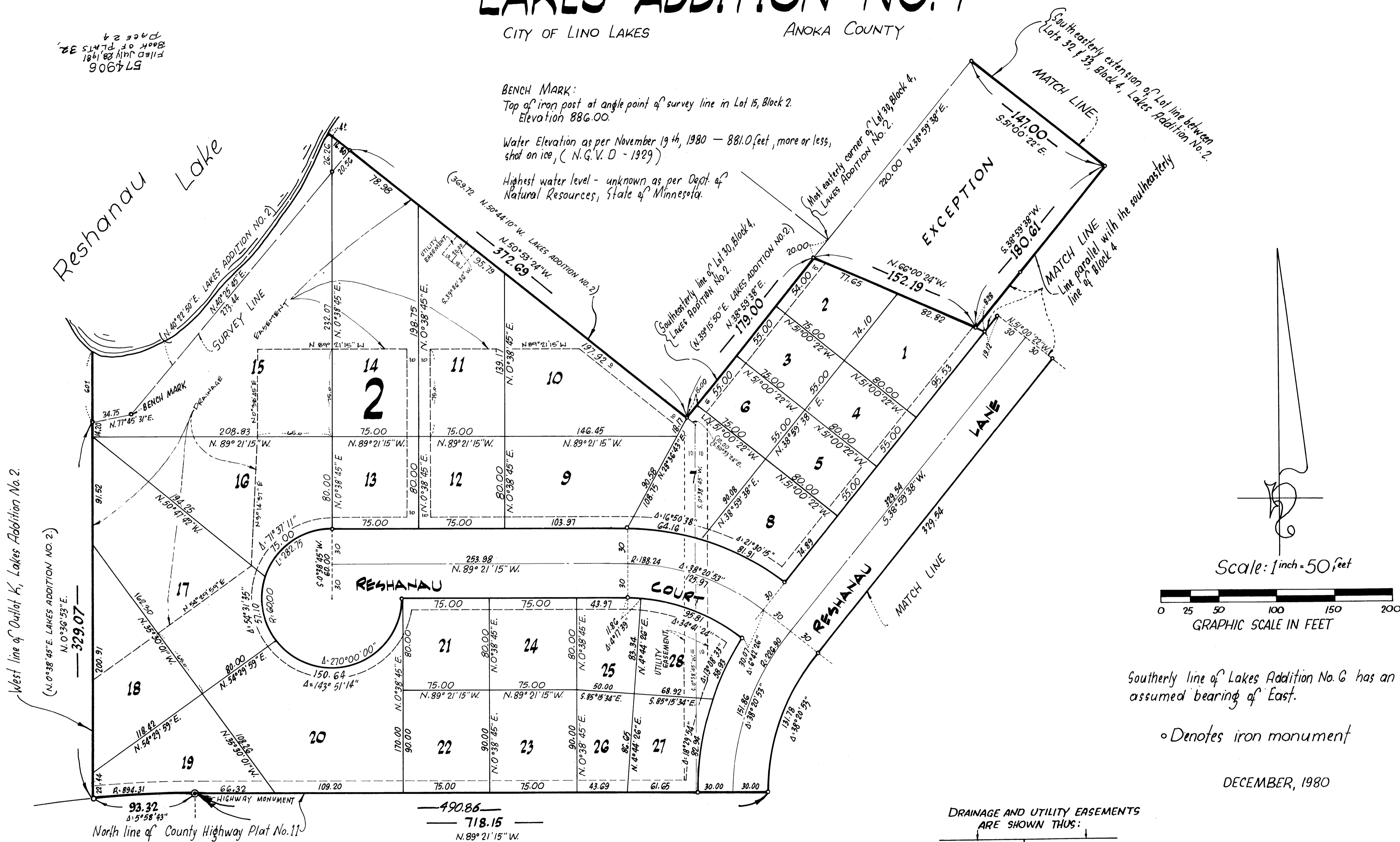
574906
Filed July 28, 1981
Book of PLATS 32,
Page 24

BENCH MARK:

Top of iron post at angle point of survey line in Lot 15, Block 2.
Elevation 886.00.

Water Elevation as per November 19th, 1980 - 881.0 feet, more or less,
shot on ice, (N.G.V.D - 1929)

Highest water level - unknown as per Dept. of
Natural Resources, State of Minnesota.

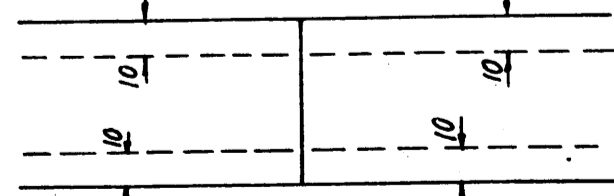


Southerly line of Lakes Addition No. 6 has an assumed bearing of East.

o Denotes iron monument

DECEMBER, 1980

DRAINAGE AND UTILITY EASEMENTS ARE SHOWN THUS:



being 10 feet in width, unless otherwise indicated and adjoining lot lines, and 10 feet in width and adjoining street lines, as shown on the plat.

COUNTY STATE AID HIGHWAY NO. 10.

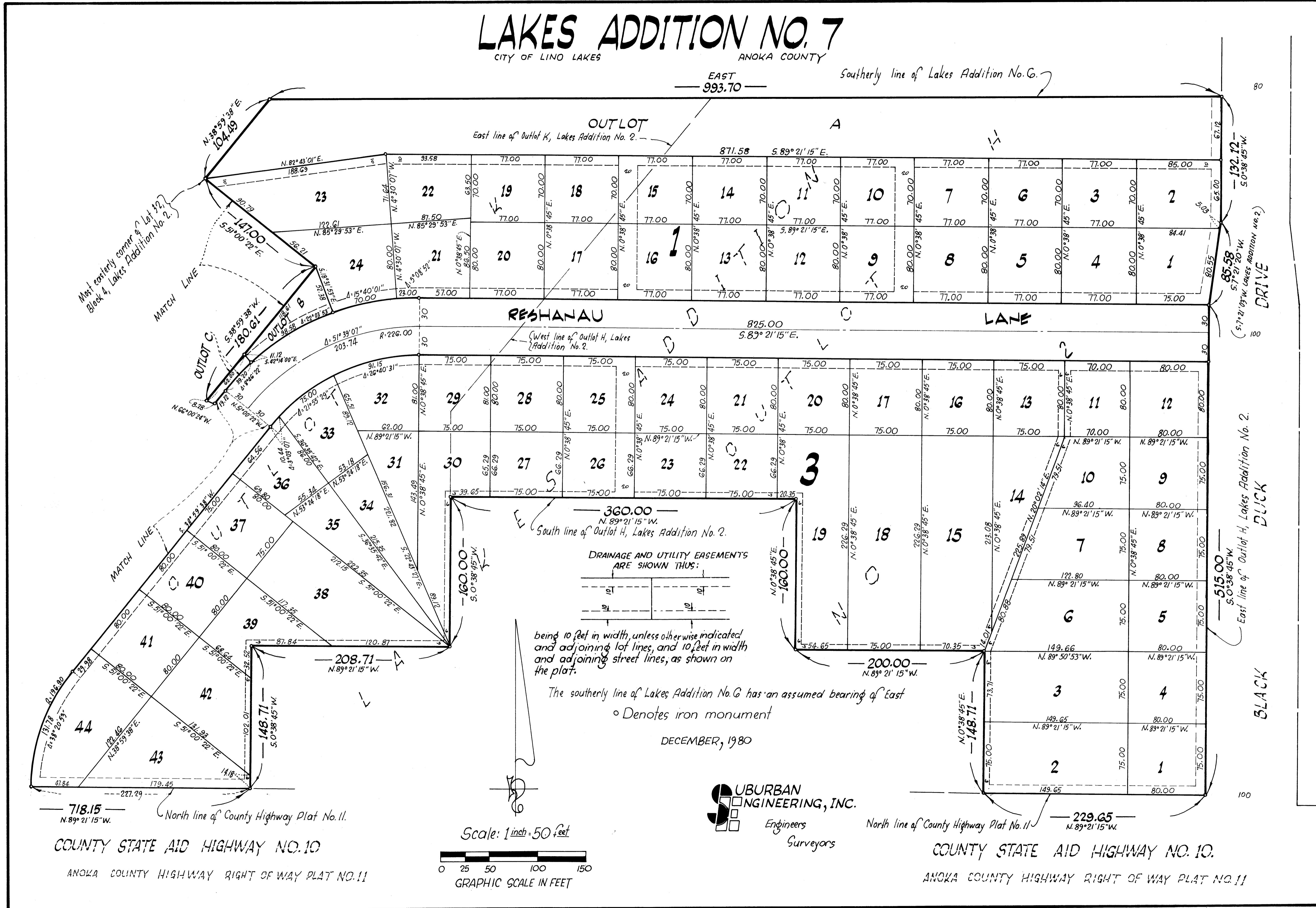
ANOKA COUNTY HIGHWAY RIGHT OF WAY PLAT NO. 11

UBURBAN ENGINEERING, INC.
— Engineers —
— Surveyors —

LAKES ADDITION NO. 7

CITY OF LINO LAKES

ANOKA COUNTY



OUTLOT A
East line of Outlot K, Lakes Addition No. 2.

RESHANAU

LAKE

360.00
N. 89° 21' 15" W.

South line of Outlot H, Lakes Addition No. 2.

DRAINAGE AND UTILITY EASEMENTS ARE SHOWN THUS:

being 10 feet in width, unless otherwise indicated and adjoining lot lines, and 10 feet in width and adjoining street lines, as shown on the plat.

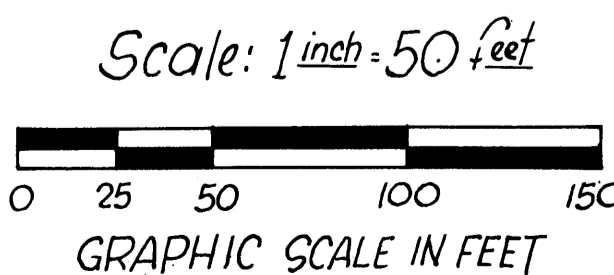
The southerly line of Lakes Addition No. 6 has an assumed bearing of East

o Denotes iron monument

DECEMBER, 1980

UBURBAN ENGINEERING, INC.

Engineers
Surveyors



COUNTY STATE AID HIGHWAY NO. 10

ANOKA COUNTY HIGHWAY RIGHT OF WAY PLAT NO. 11

COUNTY STATE AID HIGHWAY NO. 10.

ANOKA COUNTY HIGHWAY RIGHT OF WAY PLAT NO. 11