

# LANDBORG INDUSTRIAL PARK

City of Ham Lake  
County of Anoka  
Sec. 8, T. 32, R. 23

Book 63 Page 25

1708349  
 OFFICE OF COUNTY RECORDER  
 STATE OF MINNESOTA, COUNTY OF ANOKA  
 I hereby certify that the within instrument was filed in this office for record on the 11th Sept A.D., 2002  
 at 2:35 o'clock P.M., and was duly recorded in book 63 page 25  
Maureen J. Devine  
 County Recorder  
 By SLZ  
 Deputy

KNOW ALL PERSONS BY THESE PRESENTS: That Timothy S. Landborg, a single person, owner and proprietor of the following described property situated in the County of Anoka, State of Minnesota, to-wit:

The Northeast Quarter of the Northwest Quarter of Section 8, Township 32, Range 23, Anoka County, Minnesota, except that part thereof taken for highway purposes.

Has caused the same to be surveyed and platted as LANDBORG INDUSTRIAL PARK and does hereby donate and dedicate to the public for public use forever the lanes, road, street, and drainage and utility easements as shown on the plat. Also dedicating to the City of Ham Lake and the State of Minnesota the right of access onto the City of Ham Lake Service Road and State Trunk Highway No. 65 as shown on the plat. In witness whereof said Timothy S. Landborg has hereunto set his hand this 6th day of September, 2002

SIGNED:  
Timothy S. Landborg  
 Timothy S. Landborg

STATE OF MINNESOTA) The foregoing instrument was acknowledged before me this 6th day of September  
 COUNTY OF Anoka) 2002, by Timothy S. Landborg, a single person.

TRACY L. CONRADI  
 NOTARY PUBLIC - MINNESOTA  
 My Commission Expires Jan. 31, 2006

Tracy A. Conradi  
 Notary Public, Anoka County, Minnesota  
 My Commission expires 01-31-05

I hereby certify that I have surveyed and platted the land described in the dedication on this plat as LANDBORG INDUSTRIAL PARK; that this plat is a correct representation of said survey, that the distances are correctly shown on said plat in feet and hundredths of a foot; that all monuments have been correctly placed in the ground as shown, or shall be correctly placed in the ground within one year after the recording date of this plat; that the outside boundaries are correctly designated on said plat; and that there are no wetlands, in accordance with M.S. 505.02 Subdivision 1, or public highways to be designated on said plat other than as shown thereon.

Jeffrey N. Caine  
 Jeffrey N. Caine, Registered Land Surveyor  
 Minnesota License No. 12251

STATE OF MINNESOTA) The surveyors certificate was acknowledged before me a Notary Public, this 6th day of  
 COUNTY OF Anoka) September, 2002, by Jeffrey N. Caine, Land Surveyor.

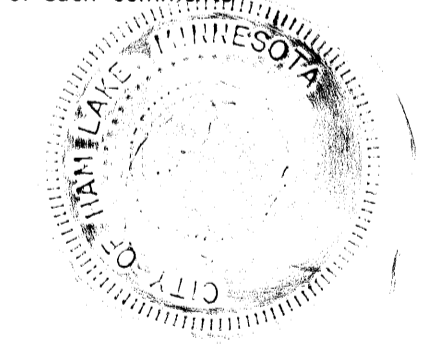
TRACY L. CONRADI  
 NOTARY PUBLIC - MINNESOTA  
 My Commission Expires Jan. 31, 2006

Tracy A. Conradi  
 Notary Public, Anoka County, Minnesota  
 My Commission expires 01-31-05

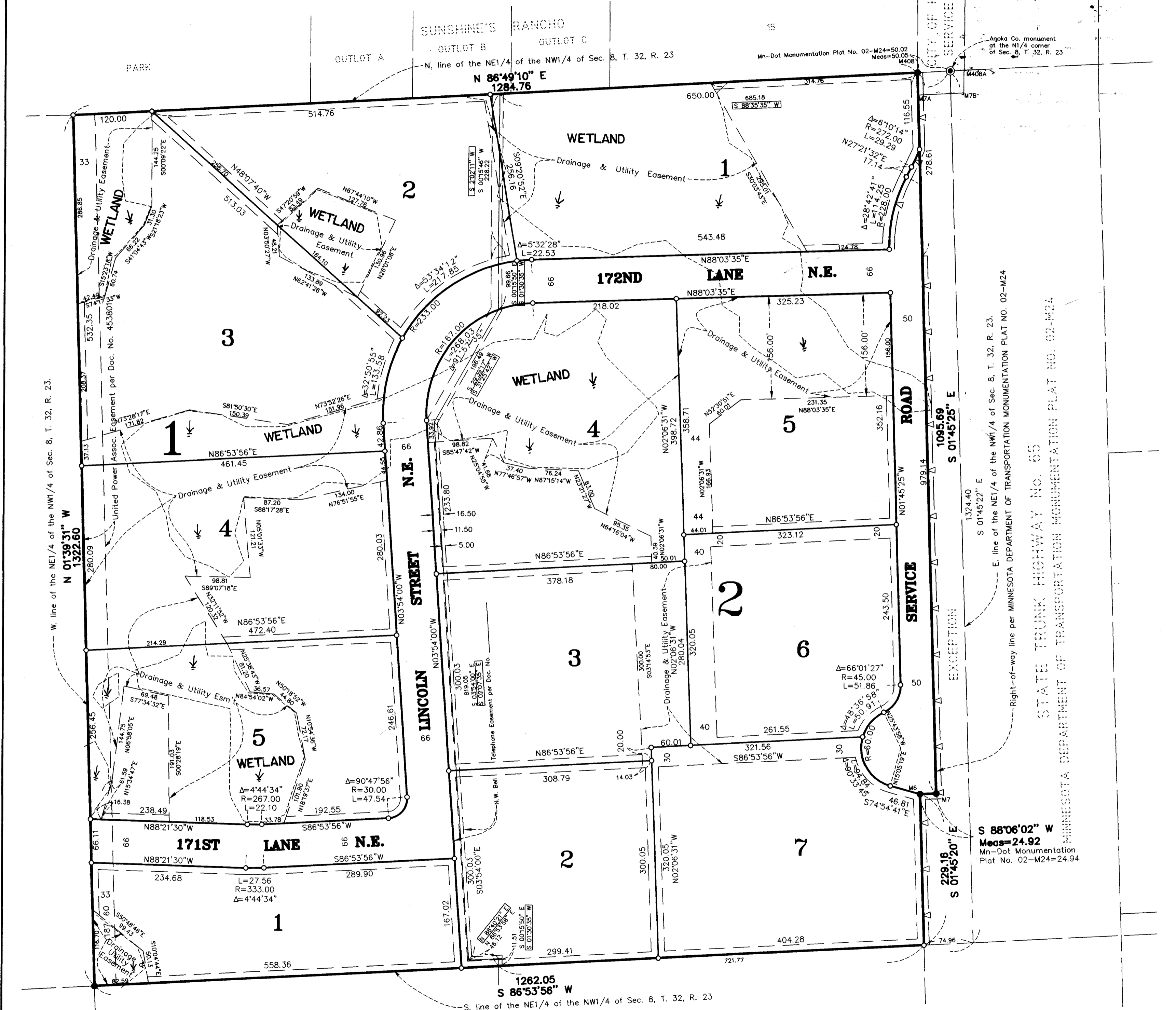
CITY OF HAM LAKE

We hereby certify that the City Council of the City of Ham Lake, Anoka County, Minnesota, duly accepted and approved the plat of LANDBORG INDUSTRIAL PARK at a regular meeting held this 5th day of August, 2002. If applicable, the written comments and recommendations of the Commissioner of Transportation and the County Highway Engineer have been received by the city or the prescribed 30 day period has elapsed without receipt of such comments and recommendations, as provided by Minn. Statutes, Section 505.03, Subd. 2.

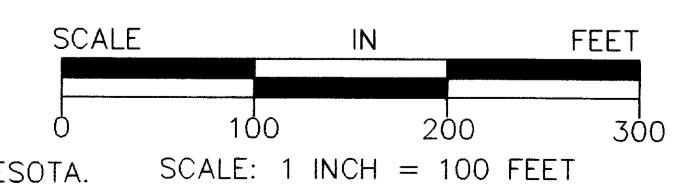
By Gregory J. Gorman Mayor By Kevin A. Niska Clerk  
 Checked and approved this 11th day of SEPTEMBER, 2002  
 By Maureen J. Devine  
 Anoka County Surveyor



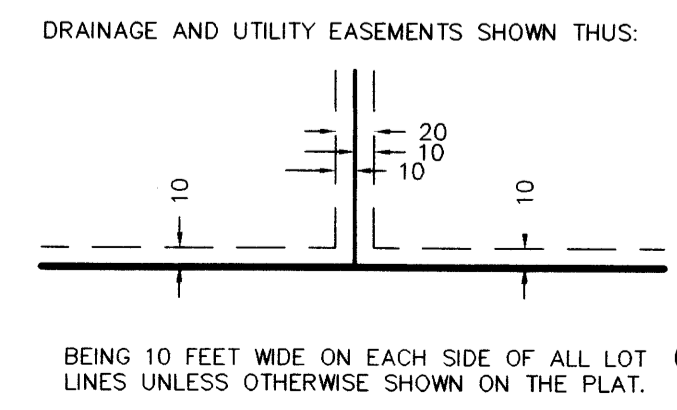
I HEREBY CERTIFY THAT THE CURRENT AND DELINQUENT TAXES ON THE LANDS DESCRIBED WITHIN ARE PAID AND THE TRANSFER IS ENTERED  
Sept 11, 2002  
Maureen J. Devine  
 PROPERTY TAX ADMINISTRATOR  
 BY J. C. Huber  
 DEPUTY PROPERTY TAX ADMINISTRATOR



M6 DENOTES MNDOT MONUMENT FOUND.  
 O DENOTES A MONUMENT REQUIRED BY MINNESOTA STATE STATUTE AND WILL BE SET WITHIN ONE YEAR OF THE RECORDING DATE OF THIS PLAT, AND SHALL BE EVIDENCED BY A 1/2" INCH BY 14 INCH IRON PIPE MARKED BY RLS 12251.  
 A DENOTES ANOKA COUNTY MONUMENT.  
 Δ DENOTES "RIGHT OF ACCESS" DEDICATED TO THE CITY OF HAM LAKE OR STATE OF MINNESOTA.



NOTE: FOR THE PURPOSES OF THIS PLAT, THE NORTH LINE OF THE NE1/4 OF THE NW1/4 OF SEC. 8, T. 32, R. 23 IS ASSUMED TO BEAR N 86°49'10"E.



Receipt # 2002107601 / \$455.00  
 CAIN & ASSOCIATES LAND SURVEYORS  
 A SUBSIDIARY OF RLK-KUISISTO, LTD.  
 17720 Highway 65 N.E. - Ham Lake, Minnesota 55304  
 763-434-7646