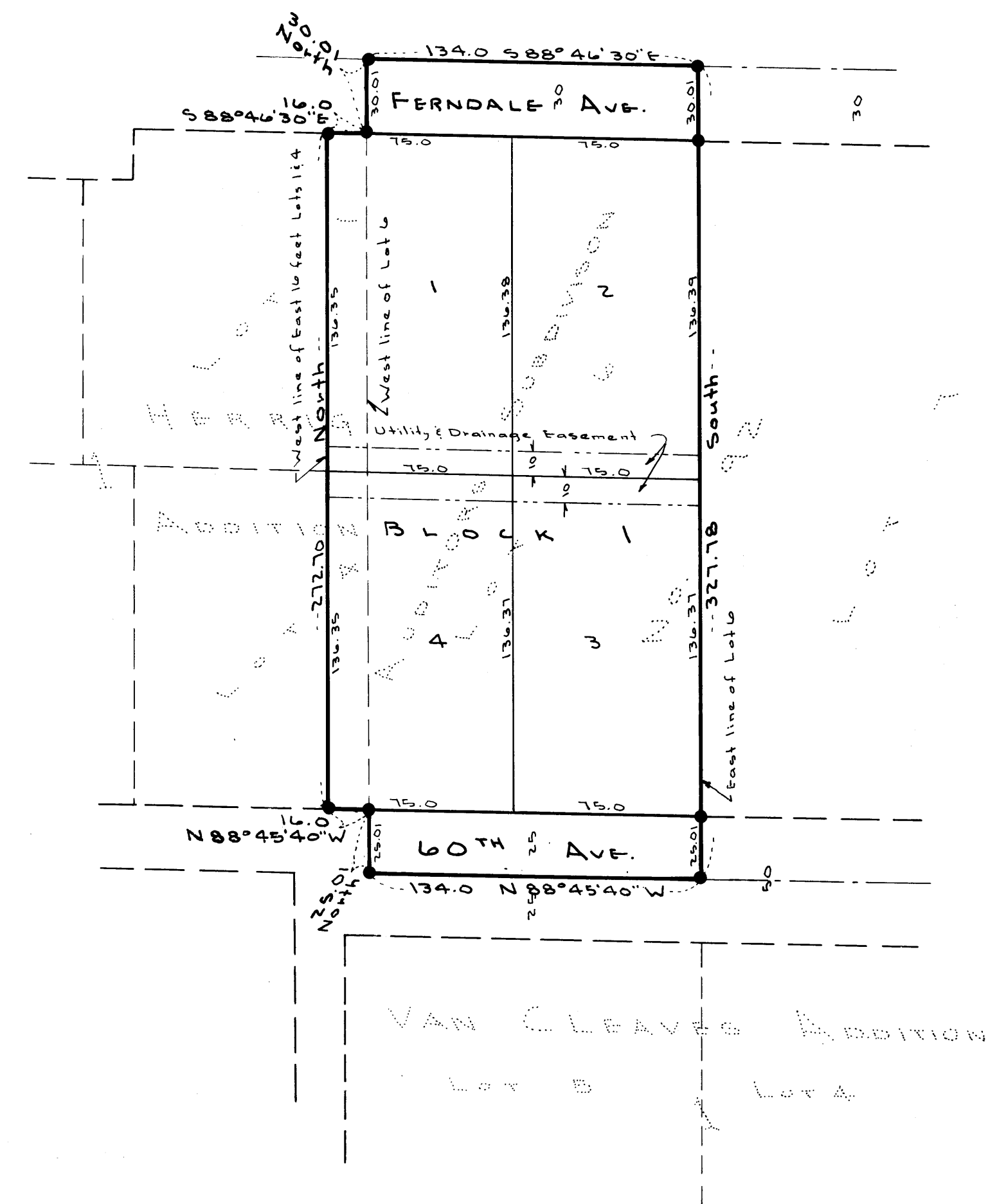


# LARRY'S 1<sup>ST</sup> ADDITION

ANOKA COUNTY, MINNESOTA

Caswell Engineering Co.

Engineers and Land Surveyors



Scale: 1"=50'

● Denotes Iron Monument

Bearings based on assumed datum

KNOW ALL MEN BY THESE PRESENTS: That Dwellings Inc., a Minnesota Corporation, owner and proprietor of the following described property situated in the State of Minnesota, County of Anoka to wit:

Lot 6, Auditors Subdivision No. 92; and the east 16 feet of Lots 1 and 4, Block 1, HERRIG ADDITION, according to the plat thereof on file and of record in the office of the Register of Deeds in and for said Anoka County.

Have caused the same to be surveyed and platted as LARRY'S 1<sup>ST</sup> ADDITION, and do hereby donate and dedicate to the public for public use forever the Avenues as shown on the annexed plat; also subject to utility and drainage easement as shown on the annexed plat.

In witness whereof Dwellings, Inc., a Minnesota Corporation, has caused these presents to be signed by its proper officer and its corporate seal to be hereunto affixed this 16th day of April 1963, A.D.

In presence of \_\_\_\_\_ signed \_\_\_\_\_ Dwelling, Inc.

Eleanor A. Guy and Lillian M. Weil \_\_\_\_\_ Lawrence G. Malenfant President

State of Minnesota  
County of Hennepin  
On this 16th day of April 1963, A.D. before me, a notary public, within and for said County and State, personally appeared Lawrence G. Malenfant, who being duly sworn did say that he is President of Dwellings, Inc., the corporation named in the foregoing instrument, that the seal affixed to said instrument is the corporate seal of said corporation, and that said instrument was signed and sealed in behalf of said corporation by the authority of its board of directors, and said Lawrence G. Malenfant acknowledged said instrument to be the free act and deed of said corporation.

Eleanor A. Guy  
Notary Public, Hennepin County, Minnesota  
My Commission expires \_\_\_\_\_  
Notary Public, Hennepin County, Minn.  
My Commission Expires Dec. 5, 1965.

I hereby certify that I have surveyed and platted the property described in this plat as LARRY'S 1<sup>ST</sup> ADDITION; that this plat is a correct representation of said survey, that all distances are correctly shown on the plat in feet and decimals of a foot, that the monuments for guidance of future surveys have been correctly placed in the ground as shown on the plat, that the outside boundary lines are correctly designated on the plat, and that there are no wellands or public highways to be designated on said plat other than as shown thereon.

K. P. Caswell, Jr.  
K. P. Caswell, Jr.  
Registered Civil Engineer and Land Surveyor  
Minnesota Registration No. 3959

State of Minnesota  
County of Hennepin  
The above certificate was subscribed and sworn to before me this 4th day of March 1963, A.D.

Myron L. Landecker  
Notary Public, Hennepin County, Minnesota  
My Commission expires \_\_\_\_\_  
Notary Public, Hennepin County, Minn.  
My Commission Expires Feb. 8, 1970.

This plat was approved and accepted by the City Council of Fridley, Minnesota, at a regular meeting thereof held this 2nd day of April 1963, A.D.

CITY COUNCIL OF FRIDLEY, MINNESOTA  
by William J. Nee its Mayor  
by Morrie Brunell its Clerk

The boundaries of this plat and the boundaries of the block therein have been mathematically checked and approved. No determination has been made to ascertain that the legal description agrees with said plat. Dated this 16th day of April 1963, A.D.

I HEREBY CERTIFY THAT TAXES FOR THE YEAR 1962 ON THE LANDS DESCRIBED WITHIN ARE PAID  
Robert A. Peterson  
County Treasurer

TAXES PAID  
31 day of May 1963  
Kenneth W. Campbell  
Auditor, Anoka County, Minn.  
Raymond Hall Deputy

OFFICE OF REGISTER OF DEEDS  
STATE OF MINNESOTA, COUNTY OF ANOKA  
I hereby certify that this instrument was filed in this office on record on the 16th day of April 1963, at 12:30 o'clock P.M., and was duly recorded in book 174 page 1  
Estroide Scherer  
Register of Deeds  
By Margaret O'Connell Deputy

by Roland W. Anderson  
Roland W. Anderson  
County Surveyor, Anoka County, Minnesota