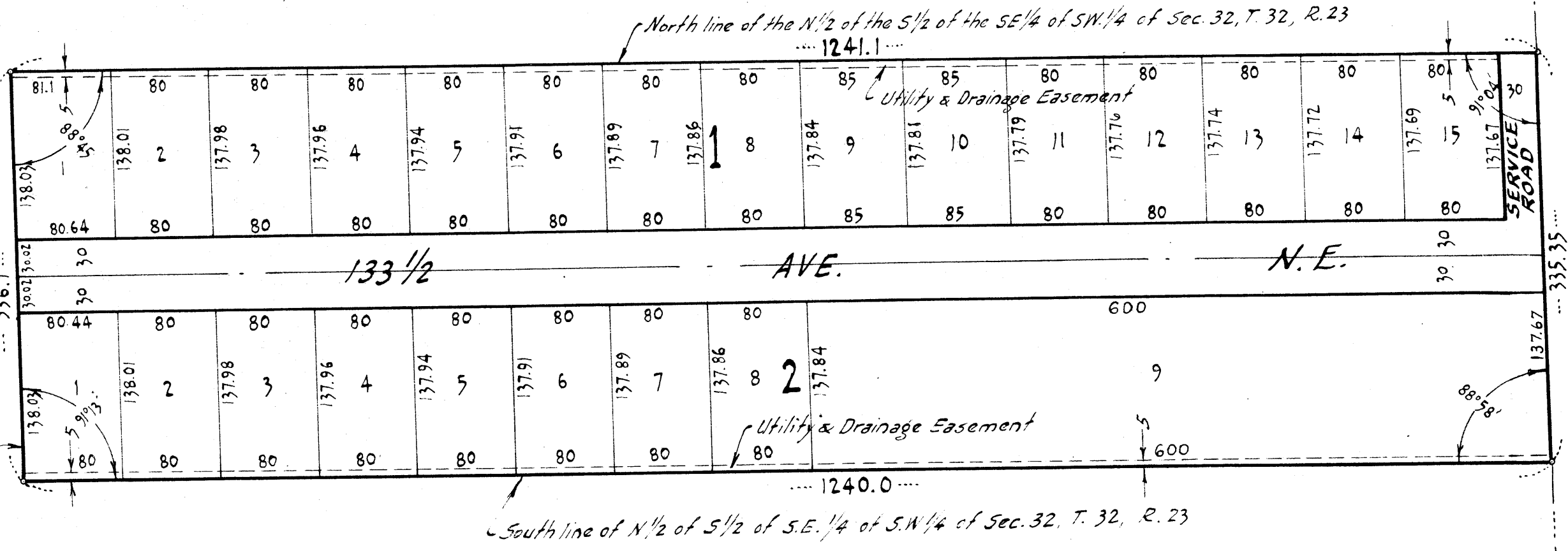


LARSON ADDITION

HAM LAKE TOWNSHIP
ANOKA COUNTY, MINNESOTA

West line of N 1/2 of S 1/2 of S.E. 1/4 of SW 1/4 of Sec. 32, T. 32, R. 23
336.1



Note "o" Denotes Iron Monument

KNOW ALL MEN BY THESE PRESENTS: That we William Stanley Larson and Agnes L. Larson, his wife, owners and proprietors and First National Bank in Anoka, a corporation organized under the laws of the United States, mortgagees of the following described property situate in the County of Anoka, State of Minnesota, to wit: The North One Half (N 1/2) of the South One Half (S 1/2) of the Southeast Quarter (SE 1/4) of the Southwest Quarter (SW 1/4) of Section Thirty-two (32), Township Thirty-two (32) North, Range Twenty-three (23) West, except that part used for State Highway Number Sixty-five (65). Have caused the same to be surveyed and platted as LARSON ADDITION, and do hereby donate and dedicate to the public for public use forever the Avenue and Service Road as shown on the annexed plat, also subject to the drainage and utility easements as shown on the annexed plat. In witness where of we have hereunto set our hands and seals this 29 day of Oct. 1956 A.D., and said First National Bank in Anoka, have caused these presents to be signed by its proper officers and its seal to be hereunto affixed on this 29 day of Oct. 1956 A.D.

In the Presence of:
Donald A. Guimond
Charles E. Johnson
Charles E. Peterson

Signed:
William Stanley Larson
WILLIAM STANLEY LARSON
Agnes L. Larson
AGNES L. LARSON
FIRST NATIONAL BANK IN ANOKA
by D.H. Gregerson its president
by Charles E. Johnson its vice-president

STATE OF MINNESOTA } ss
COUNTY OF ANOKA }
On this 29 day of Oct. 1956 AD before me, a Notary Public within and for said County and State, personally appeared William Stanley Larson and Agnes L. Larson, his wife, to me personally known to be the persons described in and who executed the foregoing instrument and they affirm and acknowledge that they executed the same as their own free act and deed.

TAXES PAID
This 21 day of Nov. 1956
Denneth J. Campbell
Auditor, Anoka County, Minn.
by Jean Couette, Deputy
I HEREBY CERTIFY THAT TAXES FOR THE YEAR 1955 ON THE LANDS DESCRIBED WITHIN ARE PAID
Walter B. Bowers
County Treasurer

177264
OFFICE OF REGISTER OF DEEDS
STATE OF MINNESOTA, COUNTY OF ANOKA } ss
I hereby certify that the within instrument was filed in this office for record on the 21 day of NOV. 21 1956 A.D. 11:55 at 2:34 P.M., and was duly recorded in book 10 of Plats page 22.
Berta Anderson
Register of Deeds
By Margaret Russell Deputy
L. P. KEILLOR,
Notary Public, Anoka County, Minn.
My Commission Expires Dec. 12, 1959.

CARTWRIGHT AND OLSON
REGISTERED LAND SURVEYORS

Scale: 1" = 100'

STATE OF MINNESOTA } ss
COUNTY OF ANOKA }
On this 29 day of Oct. 1956 AD before me, a Notary Public within and for said County and State personally appeared D.H. Gregerson and A.L. Lindman to me personally known who being each by me duly sworn did say that they are respectively the president and vice-president of the corporation named in the foregoing instrument, that the seal affixed to said instrument is the corporate seal of said corporation and said instrument was signed and sealed in behalf of said corporation by authority of its Board of Directors, and said D.H. Gregerson and A.L. Lindman acknowledge said instrument to be the free act and deed of said corporation.

L. P. Keillor
Notary Public, Anoka County, Minnesota
My Commission Expires Dec. 12, 1959.

I hereby certify that I have surveyed and platted the land described in the dedication on this plat as LARSON ADDITION; that this plat is a correct representation of said survey; that all distances are correctly shown on said plat in figures denoting feet and decimals of a foot; that the monuments for the guidance of future surveys have been correctly placed in the ground as shown on said plat; that the topography of the land is correctly shown on said plat; that the outside boundary of the land is correctly designated on said plat; and that there are no wet lands or public highways to be designated on said plat other than are shown thereon.

Sherry A. Cartwright
Registered Land Surveyor, Minn. Reg. No. 1983

STATE OF MINNESOTA } ss
COUNTY OF HENNEPIN }
The above certificate was subscribed and sworn to before me, a Notary Public within for said County and State on this 24th day of OCTOBER 1956 AD.
Norman C. Hojum
Notary Public, Hennepin County, Minnesota.
My Commission Expires Oct. 14, 1961.

We, the chairman and Clerk of the Board of Supervisors of the Town of Ham Lake, do hereby certify that on this 12 day of OCTOBER 1956 AD said Board of Supervisors of the Town of Ham Lake, Minnesota duly approved the foregoing plat of LARSON ADDITION, and duly authorized the certification of such action of the Board by its Chairman and Clerk.

BOARD OF SUPERVISORS OF TOWN OF HAM LAKE, MINNESOTA.

By: Ed Johnson its Chairman
By: Mrs. George Erickson its Clerk

This plat was approved and accepted by the Honorable Board of County Commissioners of the County of Anoka, State of Minnesota, at a regular meeting held this 13th day of NOVEMBER 1956 AD.
By: Ed Johnson CHAIRMAN, BOARD OF COMMISSIONERS, ANOKA CO. MINN.
By: Denneth J. Campbell COUNTY AUDITOR, ANOKA COUNTY, MINN.

This plat was approved as to form and execution on this 20th day of Nov 1956 A.D. by Robert J. Johnson Anoka County Attorney

Recommended for approval this 20th day of Nov 1956 A.D. by Ed Johnson County Highway Engineer, Anoka County, Minn.