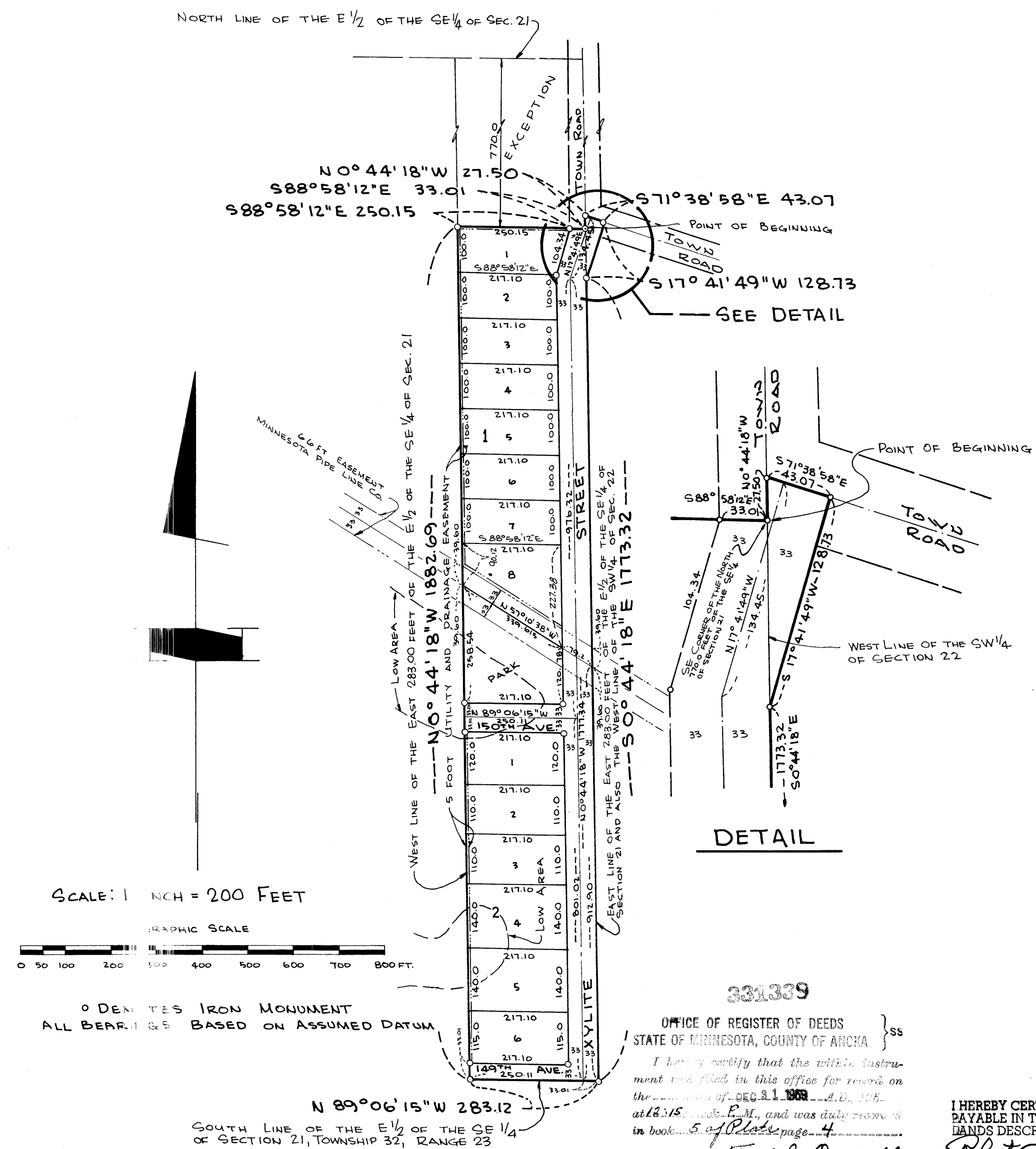


LAWNVIEW ADDITION

CASWELL AND ASSOCIATES ENGINEERS AND LAND SURVEYORS

TOWNSHIP OF HAM LAKE
ANOKA COUNTY, MINNESOTA



SCALE: 1 INCH = 200 FEET
GRAPHIC SCALE
0 50 100 200 300 400 500 600 700 800 FT.

○ DENOTES IRON MONUMENT
ALL BEARINGS BASED ON ASSUMED DATUM

331389
OFFICE OF REGISTER OF DEEDS
STATE OF MINNESOTA, COUNTY OF ANOKA } ss
I hereby certify that the within instrument was filed in this office for record on the _____ day of _____, A.D., 1969, at 12:15 p.m., and was duly recorded in book _____ page _____
By Margaret Russell
Register of Deeds

I HEREBY CERTIFY THAT THE TAXES PAYABLE IN THE YEAR 1969 ON THE LANDS DESCRIBED WITHIN ARE PAID
By Robert O. Peterson
Anoka County Treasurer

We, the chairman and secretary of the Township Board of the Township of Ham Lake, Anoka County, Minnesota, do hereby certify that on this 17 day of November, 1969, A.D., said Township Board duly approved this plat of LAWNVIEW ADDITION and authorized the certification of such action of the Board by its chairman and Secretary.

By William J. Matheson Chairman

Checked and approved this 1st day of December, 1969, A.D.

by Roland W. Anderson
Roland W. Anderson
County Surveyor, Anoka County, Minnesota

TAXES PAID
This 21 day of Dec, 1969
By Kenneth W. Campbell
Auditor, Anoka County, Minn.
By Harold W. Peterson Deputy

KNOW ALL MEN BY THESE PRESENTS: That Virgil O. Hogdal and Cora M. Hogdal, husband and wife, owners and proprietors of the following described property situated in the State of Minnesota, County of Anoka, to wit:

The East 283.00 feet of the E 1/2 of the SE 1/4 of Section 21, Township 32, Range 23 Anoka County, Minnesota except the North 770.0 feet thereof.

Also that part of the SW 1/4 of Section 22, Township 32, Range 23, Anoka County, Minnesota described as follows. Beginning at the Southeast corner of the North 770.0 feet of the SE 1/4 of Section 21, Township 32, Range 23, Anoka County, said Southeast corner also being a point in the West line of said SW 1/4 of Section 22, thence on a bearing of N 0 degrees 44 minutes 18 seconds West along said westline a distance of 27.50 feet; thence on a bearing of South 71 degrees 38 minutes 58 seconds East a distance of 43.07 feet; thence South 17 degrees 41 minutes 49 seconds West a distance of 128.73 feet to its intersection with the West line of said SW 1/4 thence North 0 degrees 44 minutes 18 seconds West along said West line to the point of beginning.

Have caused the same to be surveyed and platted as LAWNVIEW ADDITION and do hereby donate and dedicate to the public for public use forever the street, avenue, park, utility and drainage easements as shown on this plat.

In witness whereof, said Virgil O. Hogdal and Cora M. Hogdal, husband and wife, have hereunto set their hands and seals this 27 day of OCTOBER, 1969, A.D.

IN PRESENCE OF SIGNED
C. E. Paulson and Betty Hamm Virgil O. Hogdal Virgil O. Hogdal
C. E. Paulson and Betty Hamm Cora M. Hogdal Cora M. Hogdal

STATE OF MINNESOTA
COUNTY OF Mille Lacs

On this 27 day of Oct., 1969, A.D., before me, a notary public within and for said County and State, personally appeared Virgil O. Hogdal, husband and wife, to me personally known to be the persons described in and who executed the foregoing instrument and acknowledged that they executed the same as their own free act and deed.

C. E. Paulson
Notary Public, _____, Minnesota
My commission expires _____
C. E. PAULSON
Notary Public - Mille Lacs Co., Minn.
My Commission Expires Aug. 1, 1976.

I hereby certify that I have surveyed and platted the property described on this plat as LAWNVIEW ADDITION, that this plat is a correct representation of said survey; that all distances are correctly shown on the plat in feet and decimals of a foot; that all monuments have been correctly placed in the ground as shown on the plat; that the outside boundary lines are correctly designated on the plat; and that there are no wetlands or public highways to be designated on said plat other than as shown thereon.

Keith C. Caswell
Registered Land Surveyor
Minnesota Registration No. 3959

STATE OF MINNESOTA
COUNTY OF HENNEPIN

The Surveyor's Certificate was subscribed and sworn to before me, a notary public, this 17th day of October, 1969, A.D.

Sharon H. Dalluge
Notary Public, Hennepin County, Minnesota
My Commission Expires Jan. 25, 1972
My commission expires Jan 25, 1972

This plat was approved this 3rd day of December, 1969, A.D. This plat was approved as to form and execution this 15th day of Dec, 1969, A.D.

by E. J. Lundheim County Engineer, Anoka County, Minnesota by Robert E. Johnson Assistant County Attorney, Anoka County, Minnesota

This plat was approved and accepted by the Honorable Board of County Commissioners of the County of Anoka, State of Minnesota, at a regular meeting thereof held this 1 day of December, 1969, A.D.

Harvey Peterson Chairman
Kenneth W. Campbell County Auditor, Anoka County, Minnesota
By Gordon W. Harvey Deputy