

LEGACY CREEK 2ND ADDITION

Book 76 Abot pg 2

CITY OF BLAINE
COUNTY OF ANOKA
SEC. 2&3, T. 31, R. 23

KNOW ALL PERSONS BY THESE PRESENTS: That Majestic Financial, LLC, a South Dakota limited liability company, owner of the following described property:

Outlot A, LEGACY CREEK, according to the recorded plat thereof, Anoka County, Minnesota.

Has caused the same to be surveyed and platted as LEGACY CREEK 2ND ADDITION and does hereby dedicate to the public for public use the public ways and also dedicates the drainage and utility easements as created by this plat.

In witness whereof said Majestic Financial, LLC, a South Dakota limited liability company, has caused these presents to be signed by its proper officers this 24th day of October, 2011.

MAJESTIC FINANCIAL, LLC

By [Signature]
its Chief Manager

STATE OF MINNESOTA
COUNTY OF Hennepin

This instrument was acknowledged before me this 24th day of October, 2011 by Mark Peterson, as Chief Manager of Majestic Financial, LLC, a South Dakota limited liability company.

[Signature]
Notary Public, Hennepin County, Minnesota
My Commission Expires January 31, 2013

Amy Williams

I, Craig W. Morse, do hereby certify that this plat was prepared by me or under my direct supervision; that I am a duly Licensed Land Surveyor in the State of Minnesota; that this plat is a correct representation of the boundary survey; that all mathematical data and labels are correctly designated on this plat; that all monuments depicted on this plat have been, or will be correctly set within one year; that all water boundaries and wet lands, as defined in Minnesota Statutes, Section 505.01, Subd. 3, as of the date of this certificate are shown and labeled on this plat; and all public ways are shown and labeled on this plat.

Dated this 4th day of October, 2011.

[Signature]
Craig W. Morse, Licensed Land Surveyor
Minnesota License No. 23021

STATE OF MINNESOTA
COUNTY OF HENNEPIN

This instrument was acknowledged before me this 4th day of October, 2011, by Craig W. Morse.

[Signature] Shannon Sinner
Notary Public, Carver County, Minnesota
My Commission Expires January 31, 2013

CITY COUNCIL, CITY OF BLAINE, MINNESOTA

This plat of LEGACY CREEK 2ND ADDITION was approved and accepted by the City Council of the City of Blaine, Minnesota at a regular meeting thereof held this 4th day of August, 2011, and said plat is in compliance with the provisions of Minnesota Statutes, Section 505.03, Subd. 2.

CITY COUNCIL, CITY OF BLAINE, MINNESOTA
[Signature] Mayor
[Signature] Clerk

COUNTY SURVEYOR

I hereby certify that in accordance with Minnesota Statutes, Section 505.021, Subd. 11, this plat has been reviewed and approved this 9th day of NOVEMBER, 2011.

[Signature]
Larry D. Holm, Anoka County Surveyor

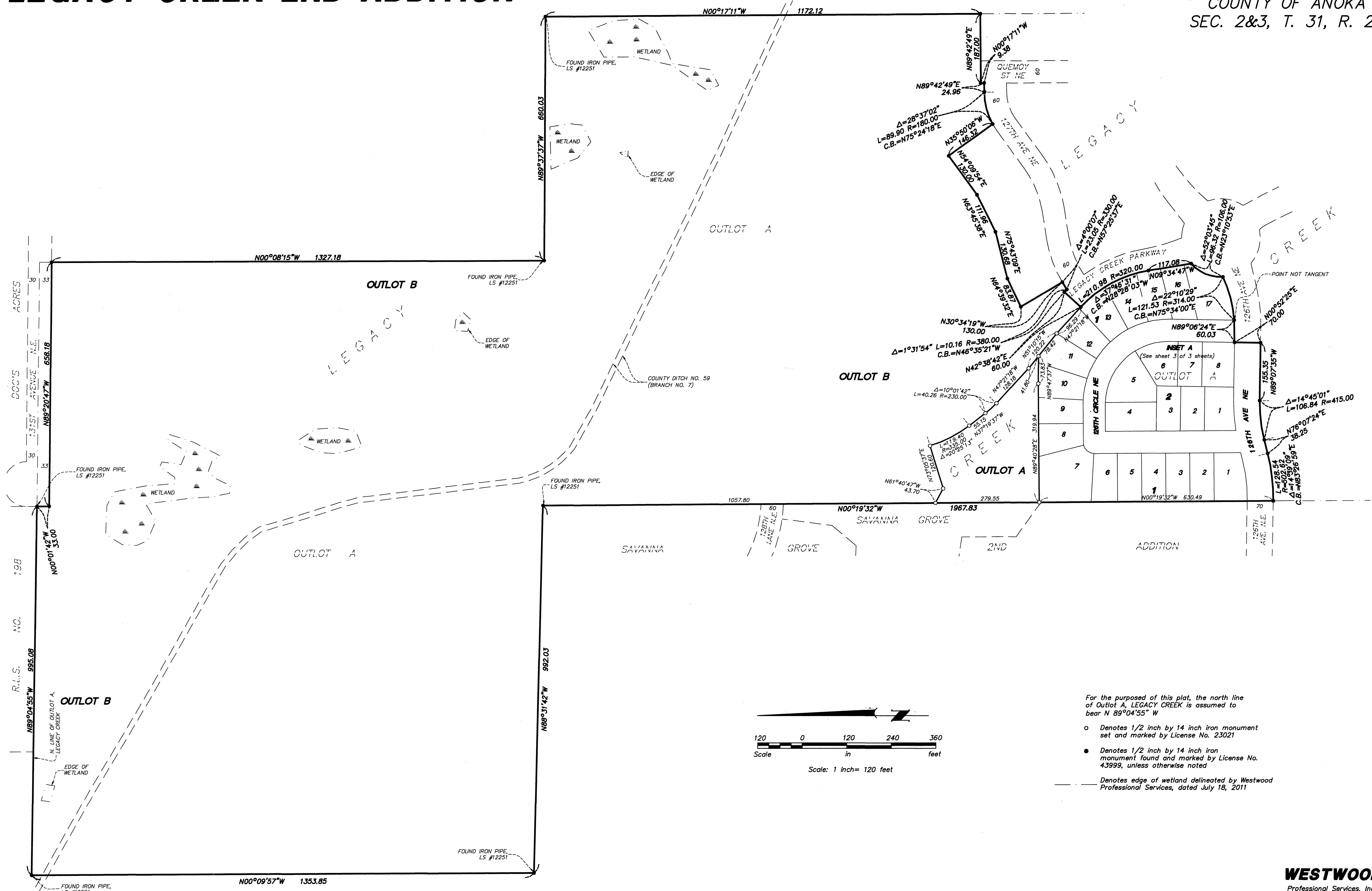
I HEREBY CERTIFY THAT THE CURRENT AND DELINQUENT TAXES ON THE LANDS DESCRIBED WITHIN ARE PAID AND THE TAXES ARE ENTERED Nov 09, 2011
[Signature]
PROPERTY TAX ADMINISTRATOR
By [Signature]
DEPUTY

2025493.002
Office of RECORDER/REGISTRAR
OF TITLES
STATE OF MINNESOTA COUNTY OF ANOKA
I hereby certify that the within instrument was filed in this office for record on the 9 day of Nov 2011 at 11:38 o'clock AM and was duly recorded in book 76 Abot page 2
[Signature]
Recorder/Registrar of Titles
By [Signature]
Deputy

LEGACY CREEK 2ND ADDITION

Book 76 Quot pg 2

CITY OF BLAINE
COUNTY OF ANOKA
SEC. 2&3, T. 31, R. 23



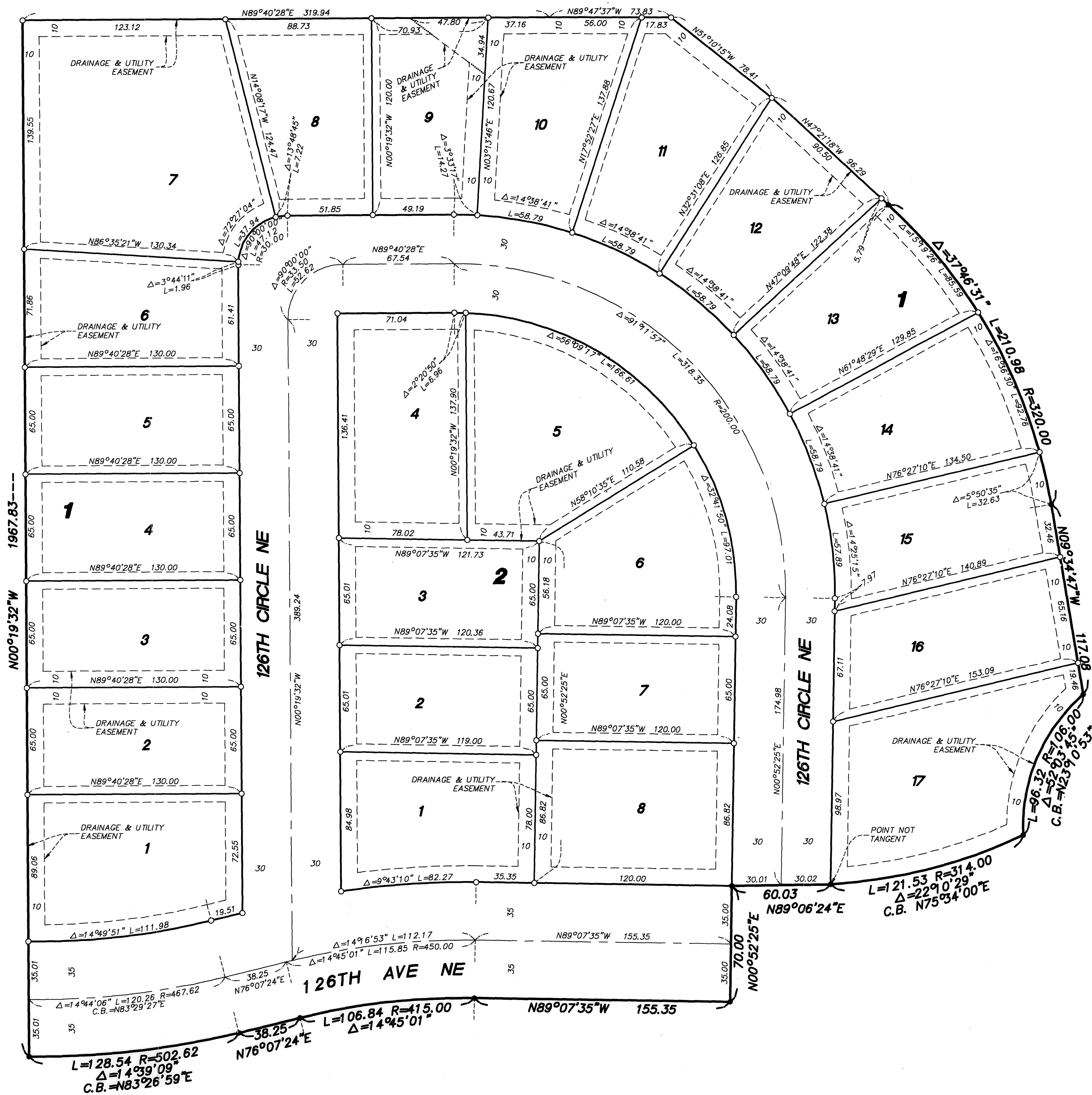
For the purposes of this plat, the north line of Outlot A, LEGACY CREEK is assumed to bear N 89°04'55" W

- Denotes 1/2 inch by 14 inch iron monument set and marked by License No. 23021
- Denotes 1/2 inch by 14 inch iron monument found and marked by License No. 43999, unless otherwise noted
- Denotes edge of wetland delineated by Westwood Professional Services, dated July 18, 2011

LEGACY CREEK 2ND ADDITION

Book 76 Abst pg 2

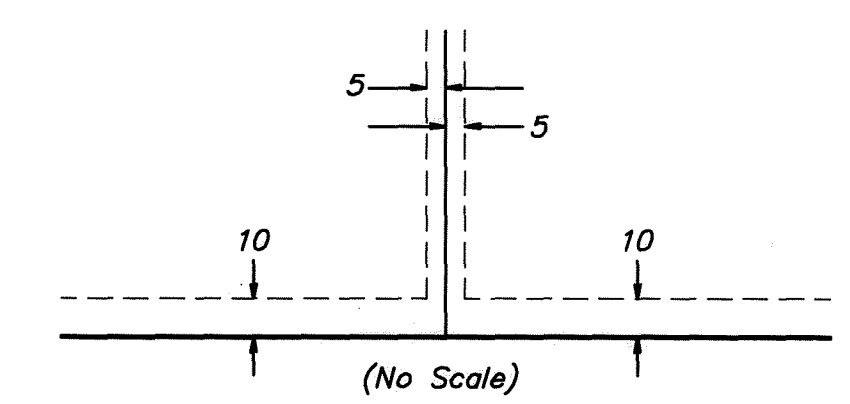
CITY OF BLAINE
COUNTY OF ANOKA
SEC. 2&3, T. 31, R. 23



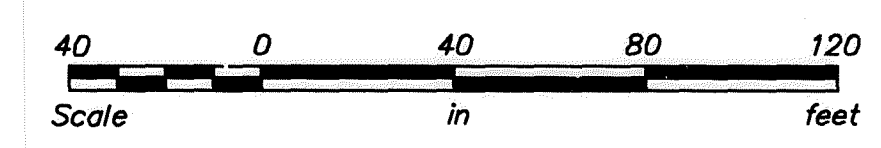
For the purposes of this plat, the north line of Outlet A, LEGACY CREEK is assumed to bear N 89°04'55\" W

- Denotes 1/2 inch by 14 inch iron monument set and marked by License No. 23021
- Denotes 1/2 inch by 14 inch iron monument found and marked by License No. 43999, unless otherwise noted

Drainage and Utility Easements are shown thus:



Being 5 feet in width, unless otherwise indicated, and adjoining lot lines, and 10 feet in width and adjoining right-of-way lines as shown on this plat.



Scale: 1 inch = 40 feet