

LEGACY CREEK 3RD ADDITION

BK 76 Abst Pg 49

CITY OF BLAINE
COUNTY OF ANOKA
SEC. 2, T. 31, R. 23

KNOW ALL PERSONS BY THESE PRESENTS: That SCC Funding I, LLC, a Minnesota limited liability company, owner of the following described property:

Lots 4, 5 and 6, Block B, Outlot B and Outlot E, LEGACY CREEK, according to the recorded plat thereof, Anoka County, Minnesota

Has caused the same to be surveyed and platted as LEGACY CREEK 3RD ADDITION and does hereby dedicate to the public for public use the drainage and utility easements as created by this plat.

In witness whereof said SCC Funding I, LLC, a Minnesota limited liability company, has caused these presents to be signed by its proper officer this 10 day of December, 2013.

SCC FUNDING I, LLC
[Signature]
Patrick R. Hiller, its CEO

STATE OF MINNESOTA
COUNTY OF Hennepin

This instrument was acknowledged before me this 10 day of December, 2013 by Patrick R. Hiller, its Chief Financial Officer of SCC Funding I, LLC, a Minnesota limited liability company.

[Signature]
Amy Williams

Notary Public, Hennepin County, Minnesota
My Commission Expires January 31, 2018

I Craig W. Morse do hereby certify that this plat was prepared by me or under my direct supervision; that I am a duly Licensed Land Surveyor in the State of Minnesota; that this plat is a correct representation of the boundary survey; that all mathematical data and labels are correctly designated on this plat; that all monuments depicted on this plat have been, or will be correctly set within one year; that all water boundaries and wet lands, as defined in Minnesota Statutes, Section 505.01, Subd. 3, as of the date of this certificate are shown and labeled on this plat; and all public ways are shown and labeled on this plat.

Dated this 5th day of December, 2013.

[Signature]
Craig W. Morse, Licensed Land Surveyor
Minnesota License No. 23021

STATE OF MINNESOTA
COUNTY OF HENNEPIN

This instrument was acknowledged before me on December 5, 2013 by Craig W. Morse.

[Signature]
Shannon Sinner
Notary Public, Carver County, Minnesota
My Commission Expires January 31, 2018

CITY COUNCIL, CITY OF BLAINE, MINNESOTA

This plat of LEGACY CREEK 3RD ADDITION was approved and accepted by the City Council of the City of Blaine, Minnesota at a regular meeting thereof held this 3rd day of October, 2013, and said plat is in compliance with the provisions of Minnesota Statutes, Section 505.03, Subd. 2.

City Council, City of Blaine, Minnesota

By: [Signature] Mayor By: [Signature] Clerk

COUNTY SURVEYOR

I hereby certify that in accordance with Minnesota Statutes, Section 505.021, Subd. 11, this plat has been reviewed and approved this 17th day of DECEMBER, 2013.

[Signature]
Larry D. Holden, Anoka County Surveyor

2074823.001
Office of RECORDER/REGISTRAR
OF TITLES
STATE OF MINNESOTA COUNTY OF ANOKA
I hereby certify that the within instrument was filed on
this office for record on the 17th day of
Dec, 2013 at 12:20 o'clock P.M.
and was duly recorded in book 76 Abstracts
49
[Signature]
Jonell M. Sawyer
Recorder/Registrar of Titles

By [Signature]
Deputy

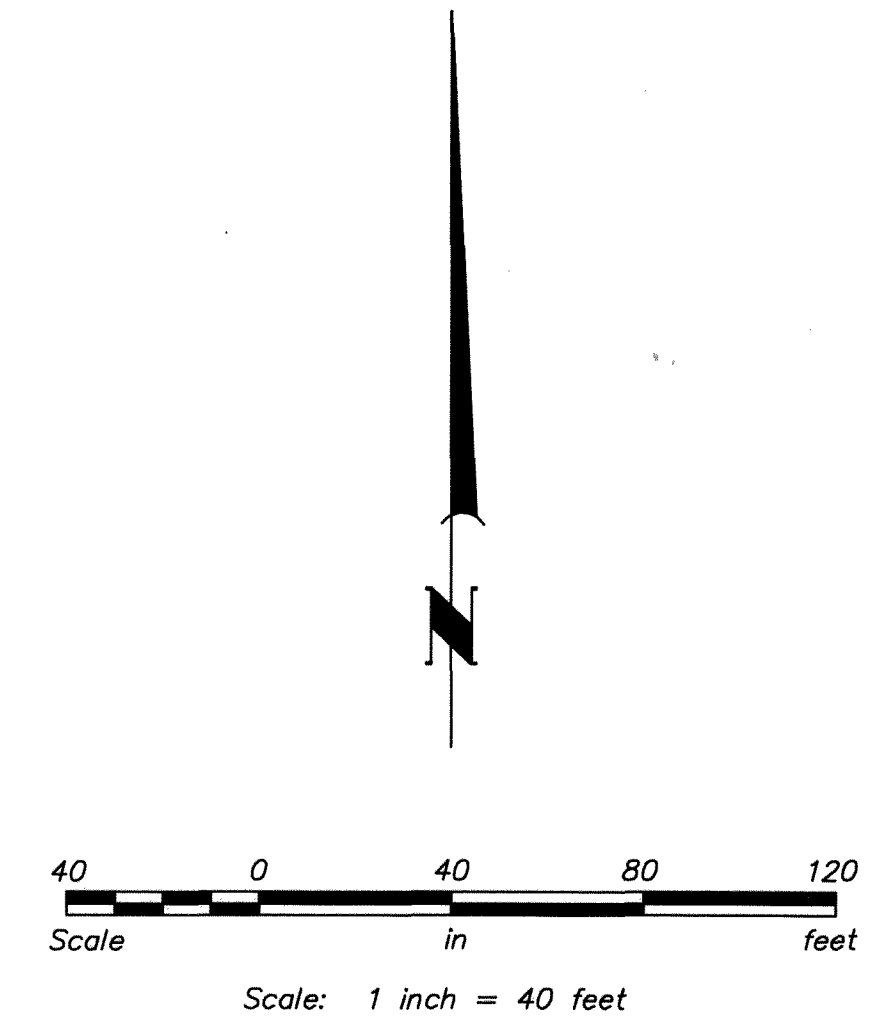
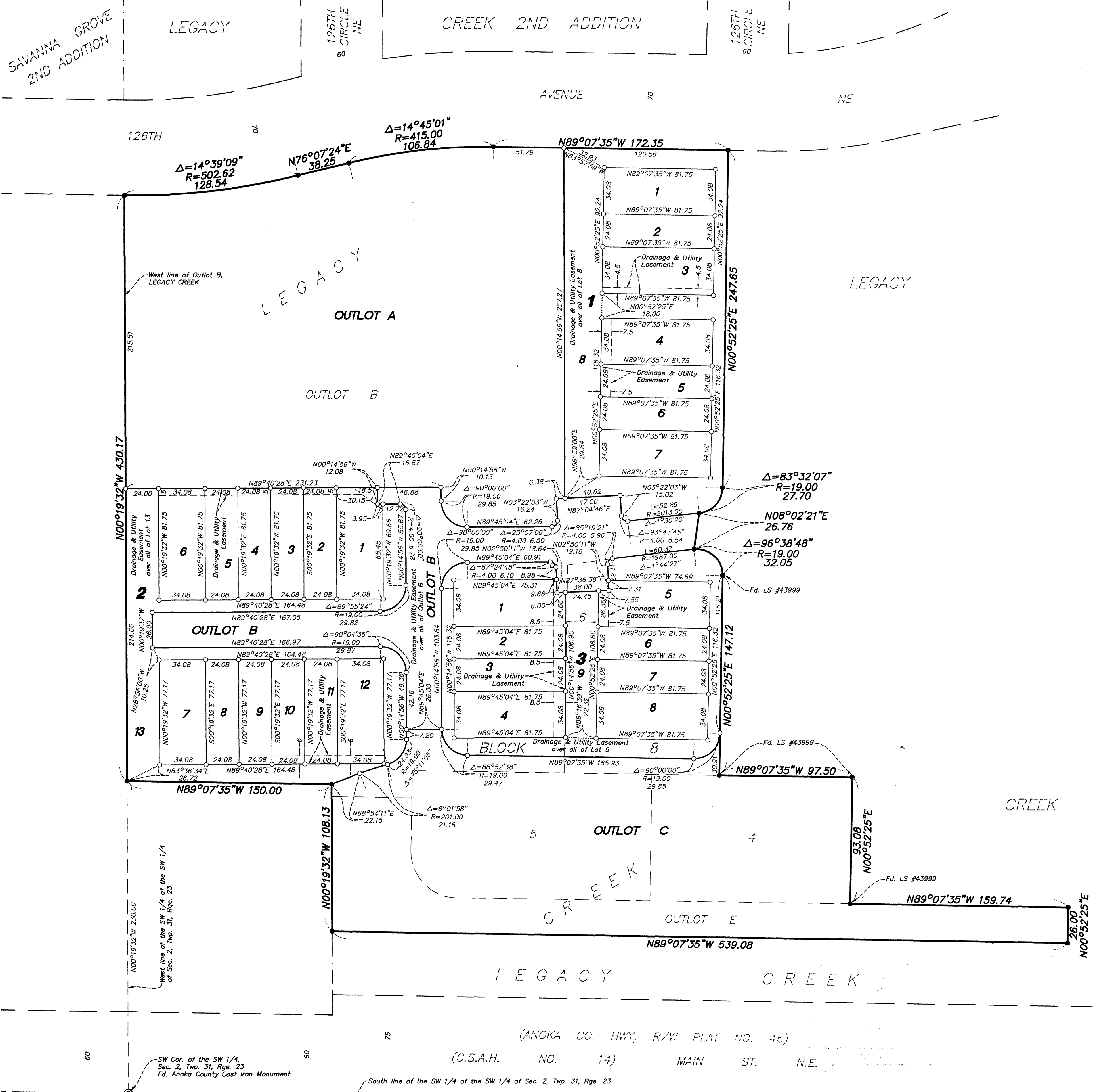
I HEREBY CERTIFY THAT THE CURRENT AND DELINQUENT TAXES ON THE LANDS DESCRIBED WITHIN ARE PAID AND THE TRANSFER IS ENTERED Dec. 17, 2013
[Signature]
Jonell M. Sawyer
PROPERTY TAX ADMINISTRATOR
BY [Signature]
DEPUTY

\$56.00

LEGACY CREEK 3RD ADDITION

BK 76 Abst Pg 49

CITY OF BLAINE
COUNTY OF ANOKA
SEC. 2, T. 31, R. 23



The west line of Outlot B, LEGACY CREEK is assumed to bear N 00°19'32\" W.

- Denotes 1/2 inch by 14 inch iron monument set and marked by License No. 23021
- Denotes 1/2 inch by 14 inch iron monument found and marked by License No. 12251, unless otherwise indicated

SW Cor. of the SW 1/4, Sec. 2, Twp. 31, Rge. 23
Fd. Anoka County Cast Iron Monument

South line of the SW 1/4 of the SW 1/4 of Sec. 2, Twp. 31, Rge. 23

(ANOKA CO. HWY. R/W PLAT NO. 46)
(C.S.A.H. NO. 14) MAIN ST. N.E.